

CAPE DORY — CAPE DORY



Builder: CAPE DORY

LOA: 40' 0" (12.19m)

Year Built: 1983

Beam: 12' 7" (3.84m)

Model: Cruising/Racing Sailboat

Max Draft: 6' 0" (1.83m)

Price: PRICE ON APPLICATION

Location: Trinidad and Tobago

Our experienced yacht broker, Andrey Shestakov, will help you choose and buy a yacht that best suits your needs **Cape Dory — CAPE DORY** from our catalogue. Presently, at Shestakov Yacht Sales Inc., we have a wide variety of yachts available on our sale's list. We also work in close contact with all the big yacht manufacturers from all over the world.

If you would like to buy a yacht **Cape Dory — CAPE DORY** or would like help answering any questions concerning purchasing, selling or chartering a yacht, please call **+1(954)274-4435**

TABLE OF CONTENTS

TABLE OF CONTENTS	2
SPECIFICATIONS	4
Basic Information	4
Dimensions	4
Accommodations	4
Hull and Deck Information	4
Engine Information	4
DETAILED INFORMATION	5
Dimensions	5
Engines	5
Accommodations	5
Electrical	5
Deck and Hull	6
Sails and Rigging	7
Additional Equipment	7
Safety	7
Exclusions	8
Disclaimer	8
PHOTOS	9
Full Canvas Cover	9
Stateroom	9
Galley	9
Layout	9
Salon	9
Workspace	9
Nav Station	10
Docked	10
Interior	10

CONTACTS	11
Contact details	11
Telephones	11
Office hours	11
Address	11

SPECIFICATIONS

Basic Information

Category: Cruising/Racing Sailboat

Model Year: 1983

Year Built: 1983

Country: Trinidad and Tobago

Dimensions

LOA: 40' 0" (12.19m)

LWL: 32' 9" (9.98m)

Beam: 12' 7" (3.84m)

Max Draft: 6' 0" (1.83m)

Accommodations

Total Heads: 2

Hull and Deck Information

Hull Material: Fiberglass

Engine Information

Engines: 1

Manufacturer: Perkins

Model: REBUILT in 2002

Fuel Type: Diesel

DETAILED INFORMATION

Dimensions

LWL: 32' 9" Beam: 12' 7" Max Draft: 6' 0" Ballast: 20,065 pounds

Engines

Total Power: 46

Accommodations

The richly finished warm teak interior has 6 ft 4 inch head room throughout. The main salon is roomy with wide settees, large dining area, full sized forward facing nav station, and sea-going galley. There is a walk thru to the aft cabin where the cushions are designed to use regular size bed sheets and can sleep a tall man with ease. There is an ample size forward V-berth and 2 heads with showers. She has a very practical comfortable interior arrangement.

Electrical

- Datamarine Depth Sounder
- Datamarine Knotmeter/Log W/Pedestal Pods
- Humming Bird Matrix 17 Fishing System
- Hand Held Depth Sounder
- Furuno Radar (24miles)
- (2) Garmin GPS
- ICOM VHF Radio W/Antenna on Mast Head
- Icom Handheld VHF M1V
- Backup Horizon VHF Radio W/Emergency Antenna
- Long Range, High Power Motorola Cell Phone and Exterior Antenna
- SGC SSB HF Radio, SGC Tuner, Split Backstay Antenna and Dyna Plate and Internal Grounding System
- Stereo
- Simrad Wheel Pilot 30 W/Remote Control Unit
- Ritchie Pedestal Mounted Compass W/Stainless Steel Dome Cover
- 12-Volt DC Circuit Breaker Panel W/Battery Voltage and Amp Meters
- 110-Volt AC Circuit Breaker Panel
- Spare Circuits
- AC Line Voltage Meter
- Tinned Copper Wiring in DC Harness
- Shore Power 110 Volt System and 50 ft of cable

- StatPower 20 True Charge Battery Charger System
- Statpower Prowatt 800-Watt Inverter
- TV Antenna on Mast
- (2) Seimens Solar Panels with Regulator
- Air Marine Wind Generator on Aluminum Pole W/Voltage Regulator
- 120 Amp Alternator-External Balmar Max Regulator
- (4) 6-Volt Golf Cart House Batteries
- (1) Engine Starting Battery
- Battery Paralleling Switch
- Custom FRP Battery Boxes
- Lightning Ground System
- Bonded Underwater Hardware
- Ample Interior Lighting
- International Navigation Lights

Deck and Hull

With a cut away forefoot keel, sloop rig, pedestal steering with auto pilot, and center cockpit she has proven to be a very comfortable and seaworthy vessel. The cockpit is large enough to seat six people comfortably. It offers high backs and seats long enough for a tall man to lie on and stretch out. It stays dry in heavy seas as it can be completely enclosed with side curtains for the dodger and bimini.

- Hand Laminated Fiberglass Hull W/ ½" Airex Core
- One Piece Molded Fiberglass Deck W/ Klegecell Core
- Unidirectional Laminate in Highly Stressed Areas
- Cut Away Forefoot Keel and Skeg Hung Rudder
- White Hull, Blue Boot Top, Blue Bottom
- Large Self-Bailing Cockpit with Teak Grate
- Anti-Fouling Bottom Paint W/Epoxy Barrier coat
- Protected Propeller
- External Lead Ballast: 7500 Lbs.
- Blue Cockpit Dodger Bimini W/Full Enclosure
- Hot and Cold Pressurized Shower in Cockpit
- Teak Outboard Motor Bracket on Stern Rail
- (2) Companionway Hatches W/Sea hoods
- Chain Locker Storage for (2) Anchor Rodes
- Large Custom Designed Teak Swim Platform (New 2004)
- Stainless Steel Swim Ladder mounted on Platform
- Full Deck Sunbrella Sun Shade (New 2006)
- Closed Cell Foam Textiline Covered Cockpit Cushions(7)
- Stainless Steel and Teak Bow Sprint W/(2) Bowsprit Anchor Rollers
- Electric Anchor Windlass W/Deck Switch

- Bruce 44
- CQR 44
- Fortress 35
- Sea Water Deck/Anchor Wash Down System

Sails and Rigging

NEW Main sail July 2007

- Hood Stoway Mast System
- Hood Stoway Mainsail W/ Duroseam (W/O Insignia)
- Keel Stepped Mast
- Lee 130 Roller Furling Genoa W/Duroseam and Blue Sun Shield
- Harkin Jib Unit-II Furling System (1999)
- Hood Cruising Spinnaker and Snuffer
- Hood Light Air Drifter
- (2) Clear Anodized Aluminum Spinnaker poles

Additional Equipment

- Bosons Chair
- Flotation Cockpit Cushions—Blue Textiline
- (4) Caframo Cabin Fans
- 110v AC Receptacles
- Edson Outboard Engine lift
- 10 ft Hard Bottom AB Dinghy W/Sun Cover
- 15 HP Yamaha Engine
- (3) Scuba Tanks (In Hygro)
- Color TV with DVD and VCR Players
- Full Tower Computer, 200 GB HD, 3 DVD and CD Drives, 17 in Flat Screen, Flatbed Scanner, Printer, 1 Hour UPS and Software included (also interfaced to GPS and SSB)
- Large Inventory of Spare Parts and Tools
- Large Inventory of Manuals for Equipment including Perkins Engine Parts and Maintenance Manual

Safety

- Coast Guard Gear Including Fenders, Dock Lines, Lifejackets, Flares, Boat Hook and Bell
- (4) Fire Extinguishers
- Emergency Tiller
- Double Lifelines W/Offshore Pelican Hooks

- Tall Offshore Stanchions W/Reinforced Bases
- Molded-In Bulwarks
- (2) Large Scuppers in Cockpit Sole
- High Capacity Manual Bilge Pump Mounted in Cockpit
- (2) Large Electric Bilge Pumps
- Stainless Steel Stove Surround
- Stove Sea Rail W/Harness Clips
- Radar Reflector
- Interior and Exterior Grab Rails
- International Navigation Lights
- Lightning Ground System
- Bonded Underwater Hardware
- U.L. Listed Sea cocks

Exclusions

Owner's personal belongings.

Disclaimer

The Company offers the details of this vessel or yacht in good faith but cannot guarantee or warrant the accuracy of this information nor warrant the condition of the vessel. A buyer should instruct his representatives, agents, or his surveyors, to investigate such details as the buyer desires validated. This vessel or yacht is offered subject to prior sale, price change, or withdrawal without notice.

PHOTOS

Full Canvas Cover



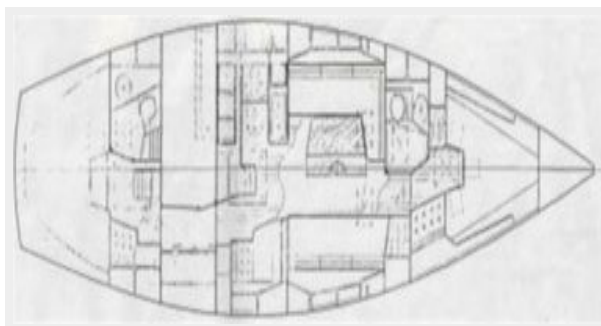
Stateroom



Galley



Layout



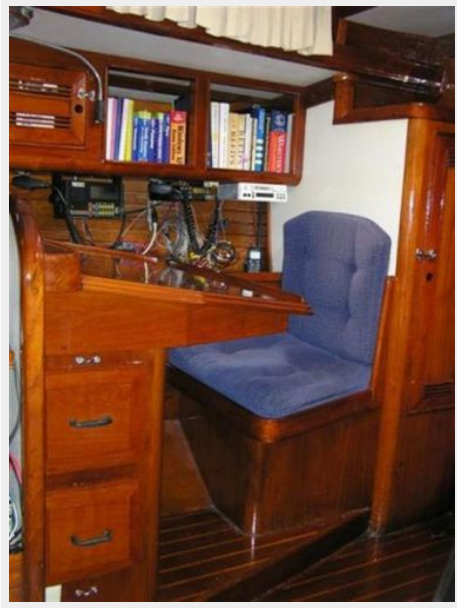
Salon



Workspace



Nav Station



Docked



Interior



CONTACTS

Andrey Shestakov, leading yacht broker of the sales department of Shestakov Yacht Sales Inc. Shestakov Yacht Sales Inc., the official representative of the Miami/Fort Lauderdale FL headquarters.

Contact details

Email: **andrey@shestakovyachtsales.com**

Web: shestakovyachtsales.com/en/

Telephones

USA: **+1(954)274-4435**

Office hours

Monday – Saturday: **9:00 - 21:00 EDT**

Sunday: **closed**

Address



Harbour Towne Marina, 850 NE 3rd St,
STE 213, Dania, FL 33004