

MARAYA II — CHEOY LEE



Builder: CHEOY LEE

Year Built: 1985

Model: Motorsailer

Price: PRICE ON APPLICATION

Location: United States

LOA: 63' 0" (19.20m)

Cruise Speed: 8 Kts. (9 MPH)

Max Speed: 10 Kts. (12 MPH)

Our experienced yacht broker, Andrey Shestakov, will help you choose and buy a yacht that best suits your needs **Maraya II — CHEOY LEE** from our catalogue. Presently, at Shestakov Yacht Sales Inc., we have a wide variety of yachts available on our sale's list. We also work in close contact with all the big yacht manufacturers from all over the world.

If you would like to buy a yacht **Maraya II — CHEOY LEE** or would like help answering any questions concerning purchasing, selling or chartering a yacht, please call **+1(954)274-4435**

TABLE OF CONTENTS

TABLE OF CONTENTS	2
SPECIFICATIONS	3
Basic Information	3
Dimensions	3
Speed, Capacities and Weight	3
Accommodations	3
Hull and Deck Information	3
Engine Information	3
DETAILED INFORMATION	4
Accommodations	4
Galley/Laundry	5
Electronics	5
Electrical System	6
Deck Equipment	6
Sails & Rigging	8
Mechanical	9
Other Features	10
Exclusion	10
Exclusions	10
Disclaimer	11
PHOTOS	12
CONTACTS	28
Contact details	28
Telephones	28
Office hours	28
Address	28

SPECIFICATIONS

Basic Information

Category: Motorsailor

Model Year: 1985

Year Built: 1985

Country: United States

Dimensions

LOA: 63' 0" (19.20m)

Speed, Capacities and Weight

Cruise Speed: 8 Kts. (9 MPH)

Cruise Speed RPM: 1600 Kts.

Max Speed: 10 Kts. (12 MPH)

Max Speed RPM: 2300 Kts.

Displacement: 99800 Pounds

Water Capacity: 1150 Gallons

Fuel Capacity: 1500 Gallons

Accommodations

Total Cabins: 4

Hull and Deck Information

Hull Material: Fiberglass

Engine Information

Engines: 2

Manufacturer: Caterpillar

Model: 3208

DETAILED INFORMATION

Accommodations

When approaching this majestic Pilothouse Motor Sailor from the water or by land, you will see heads turn. The beautiful lines and salty pilothouse give a look of a true passage-maker. The vessel is easily boarded from side deck or bow and stern safety rails. Both adjustable ladder with platform or boarding platform with extensions provide safe passage on or off the vessel.

The wide non skid decks with abundant hand rails and safety cables give a secure feel underway. The huge bow area boasts a huge electric windlass, dual dunnage boxes and forward seating area. The raised helm deck provides the captain and crew an unobstructed 360 degree field of view. Two new helm chairs provide comfort and a full complement of electronics and instrumentation give tactical feedback to help the captain navigate all parts of the world. The helm deck and aft deck biminis provide plenty of shade. The aft deck encompasses a large u-

shaped seating area, pedestal table, teak chairs, and numerous storage lockers. The pilothouse is entered through the aft deck port side. The cozy pilothouse has a full set of electronics, 17' Nav display, excellent visibility, and a long aft bench seat which can be utilized as a day berth. The pilothouse also features teak cabinets throughout, parquet sole, port/starboard/aft window ports.

Four steps down leads you into the lavish salon. Immediately forward to starboard is a u-shaped leather settee which can easily seat six. A large high gloss teak pedestal table gives ample room for dining. Two additional leather seats also act as ottomans. Across to port are two leather high back lounge chairs which share a small teak coffee table. The aft port salon comprises the u-shaped galley. New counter tops, stainless steel appliances and abundant storage make for easy meal preparation. The entire salon boasts teak carpentry, parquet sole, and a white vinyl overhead.

The forward companionway provides access to the three guest cabins. The forward has two single berths to port with lots of storage. The port cabin has a double berth and access to a shared head. The starboard cabin has two single over under berths with ample light and storage. There is a second head with stall shower and several storage compartments.

The aft companionway allows access to the work room/laundry room. This utility room has a work bench, many storage areas, washer/dryer and engine room access.

All the way aft is the full beam master stateroom. This cabin truly is a grand suite. A large island queen raised berth provides a quiet cozy nights sleep to its owner. Key features include mirrored vanity with pull out pedestal chair, starboard side settee, two huge hanging lockers, 4 portholes, escape hatch, and beautiful teak cabinets and wall coverings throughout. The en suite head has a large tub, Vacu-flush head, sink and numerous storage cabinets.

Galley/Laundry

- New U-shaped galley with Corian countertops
- New Double stainless steel sink with pull out faucet
- Samsung microwave
- Hamilton Beach coffee maker
- Fisher oven with 4 burner electric stove top
- Large cold plate stainless steel refrigerator & freezer
- 2 cabinets
- 2 drawers
- Parelli sole
- New Stainless steel tile backsplash
- Florescent & spotlights
- Sunbeam toaster
- Kenmore stackable washer/dryer

Electronics

- Garmin GPS Map 4208
- Robertson AP300x autopilot
- Horizon depth display
- Wind direction & speed gauge
- Standard Horizon VHF/ACR/EPIRB
- ICOM M-80 VHF pilothouse
- Furuno color video sounder pilothouse
- Speed distance log pilothouse

- Autopilot control pilothouse
- Danforth 6" compass pilothouse
- Rudder dial indicator
- New Clipper wind instrument
- XP laptop with NobelTech
- Icom SSB Radio

Electrical System

- Onan 8 kw generator 3226 hrs
- Onan 15kw generator
- AC & DC distribution panels
- AC & DC volt & amp gauges
- Link 2000 inverter
- 4 battery switches
- (8) 12 volt batteries
- 50 amp shore cable
- Battery charger 100 amp

Deck Equipment

- LoFrans 220 electric windlass
- Stainless steel bow rail
- Port & starboard stainless stanchions w/ white safety cable
- Stainless steel transom hand rail with opening straps
- Stainless steel transom davits
- Upper helm bimini top
- Aft deck bimini top

-
- (2) huge forward deck dunnage boxes
 - Fiberglass decks with non skid - bow, sides & aft
 - Teak helm deck
 - Teak aft deck seating area
 - Electric windlass with dual horizontal winches & single vertical winch
 - (2) huge naval style anchors through deck mount
 - (2) chains 350'
 - Bruce anchor light duty
 - (3) forward Bomar hatches
 - Forward aft deck light prism
 - Forward deck seating area w/ storage below
 - Two stainless steel safety rails by mast
 - (2) mid deck Bomar hatches
 - Teak cap rail
 - Teak hand rails side of house
 - Forward pilothouse windshield sun screen
 - (4) mid ship 18" cleats
 - Switlink 6 person raft with Hydro Release
 - Rayline spot light
 - Side deck house suncreens
 - Raised helm deck with teak sole
 - Enclosed gauge cluster
 - Stainless steel wrapped helm wheel
 - Teak bridge cap rail
 - (2) Sea Furniture helm chairs
 - Stainless steel helm safety rail

- Aftdeck u-shaped seating area with cushions
- Aft deck pedestal table with varnished top
- Lifesling aft deck
- Helm seat covers
- Covers for all varnished aftdeck cabinets
- Teak aft deck chair
- Aft spreader lights
- (3) aft deck storage lockers
- Aft deck sink enclosed
- Aft deck faucet
- Midship boarding ladder with platform
- Forward deck boarding platform with extensions
- Lazzarette hatch
- Flip down transom steps • AB 11'6" 4 stroke Nissan 2008 18 hp & boat cover
- (2) bow cleats 18"

Sails & Rigging

- Cruise equipped
- Boom Vang
- Wire standing rigging
- Aluminum spar
- Whisker pole
- Mainsheet traveler
- Lewmar 2 speed 40 winch on mast
- Bariant 25 winch Mast-2

-
- Barent 21 winch aft
 - Barent 27 winch
 - (2) Barent 36 winches aft electric
 - 100% JIB
 - Genoa 140% Main
 - Mizzen
 - Roller Furling electric
 - Storm jib on cutter stay
 - Genecker

Mechanical

- Bilge blower
- Engine alarm
- Automatic fire extinguishing system
- Fresh water cooling system
- Lube oil storage & transfer system
- (2) extra props
- Twin disc transmission
- Emergency tiller
- VDO gauges
- Morse throttle & shift controls
- (3) bilge pumps
- Sea Recovery water maker 500 gpd
- Racor fuel filters with vacuum gauges
- Groco water strainers
- (4) air conditioning compressors

- (2) sump pumps
- Emergency driven pump
- Feathering props

Other Features

- New VHF bridge
- (2) new helm chairs
- Helm deck & aft
- Deck teak replaced
- New teak table aft deck
- New tender cover
- New aft deck table cover
- Salon settee re-upholstered
- Pilothouse helm bench seat recovered
- New Galley Corian countertop
- New galley stainless steel back splash
- New engine mounts & realigned
 - New Cutlass bearings
- new fresh water pumps
- New Sleep Number mattress in master stateroom

Exclusion

Large canvas in salon

Exclusions

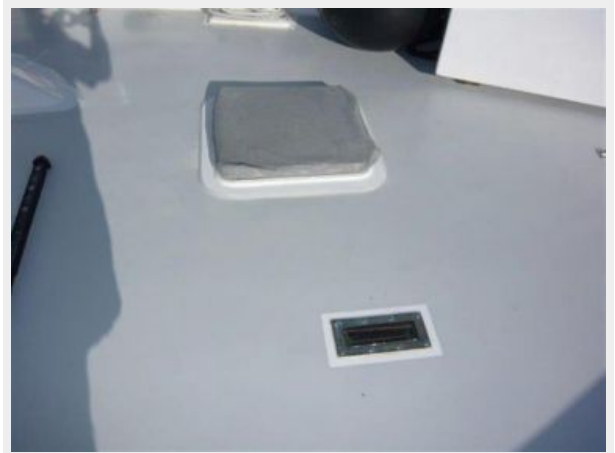
Owner's personal belongings.

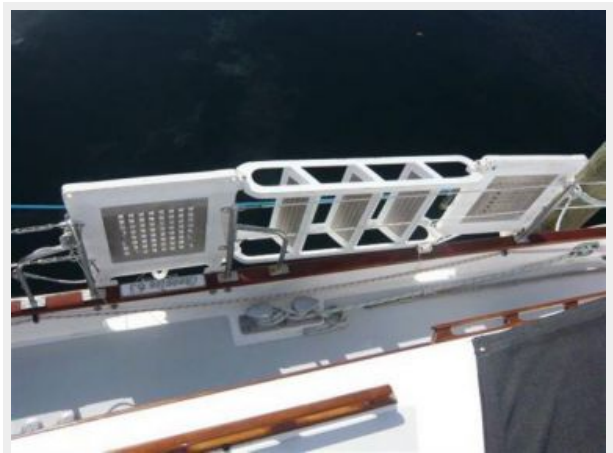
Disclaimer

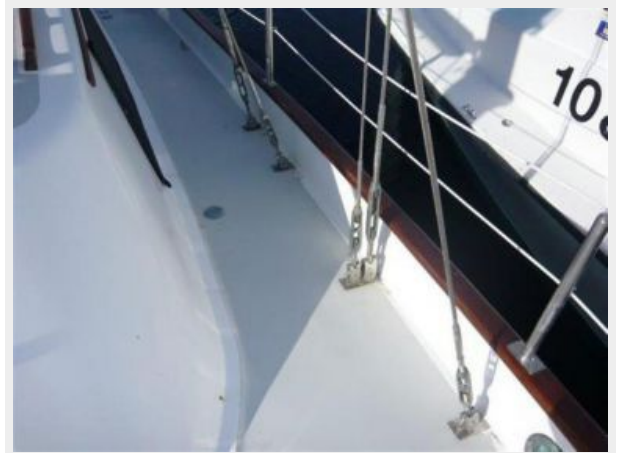
The Company offers the details of this vessel or yacht in good faith but cannot guarantee or warrant the accuracy of this information nor warrant the condition of the vessel. A buyer should instruct his representatives, agents, or his surveyors, to investigate such details as the buyer desires validated. This vessel or yacht is offered subject to prior sale, price change, or withdrawal without notice.

PHOTOS













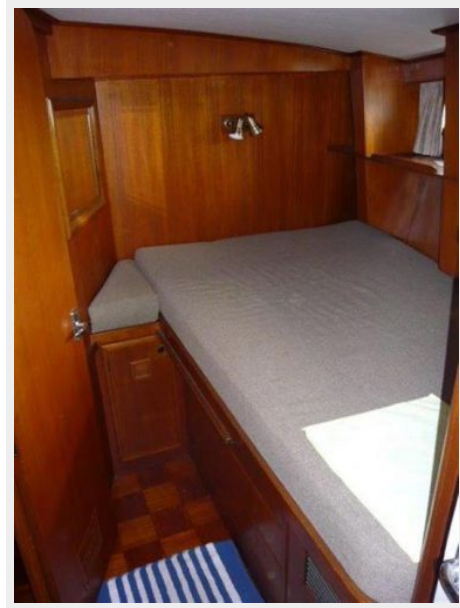


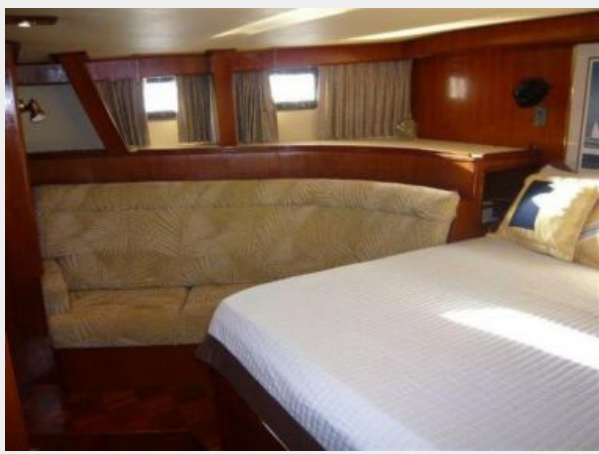
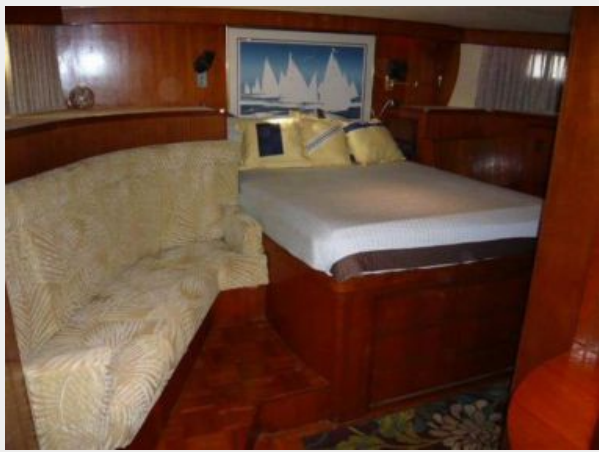


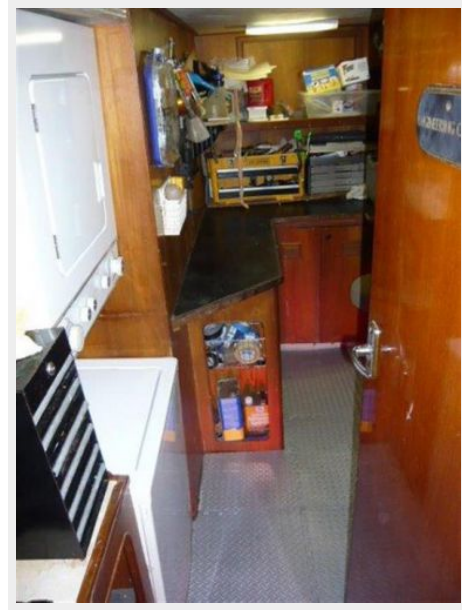
















CONTACTS

Andrey Shestakov, leading yacht broker of the sales department of Shestakov Yacht Sales Inc. Shestakov Yacht Sales Inc., the official representative of the Miami/Fort Lauderdale FL headquarters.

Contact details

Email: andrey@shestakovyachtsales.com

Web: shestakovyachtsales.com/en/

Telephones

USA: +1(954)274-4435

Office hours

Monday – Saturday: **9:00 - 21:00** EDT

Sunday: **closed**

Address



Harbour Towne Marina, 850 NE 3rd St,
STE 213, Dania, FL 33004