

25' 1998 COBALT 252 — COBALT



Builder: COBALT

LOA: 25' 0" (7.62m)

Year Built: 1998

Beam: 8' 6" (2.59m)

Model: Runabout

Price: PRICE ON APPLICATION

Location: United States

Our experienced yacht broker, Andrey Shestakov, will help you choose and buy a yacht that best suits your needs 25' 1998 Cobalt 252 — COBALT from our catalogue. Presently, at Shestakov Yacht Sales Inc., we have a wide variety of yachts available on our sale's list. We also work in close contact with all the big yacht manufacturers from all over the world.

If you would like to buy a yacht 25' 1998 Cobalt 252 — COBALT or would like help answering any questions concerning purchasing, selling or chartering a yacht, please call +1(954)274-4435

TABLE OF CONTENTS

TABLE OF CONTENTS	2
SPECIFICATIONS	3
Basic Information	3
Dimensions	3
Speed, Capacities and Weight	3
Hull and Deck Information	3
Engine Information	3
DETAILED INFORMATION	4
Manufacturer Provided Description	4
Equipment List	4
Exclusions	5
Disclaimer	5
PHOTOS	6
Manufacturer Provided Image	10
Manufacturer Provided Image	10
CONTACTS	11
Contact details	11
Telephones	11
Office hours	11
Address	11

SPECIFICATIONS

Basic Information

Category: Runabout

Model Year: 1998

Year Built: 1998

Country: United States

Dimensions

LOA: 25' 0" (7.62m)

Beam: 8' 6" (2.59m)

Clearance: 4' 9" (1.45m)

Speed, Capacities and Weight

Displacement: 4350 Pounds

Fuel Capacity: 73 Gallons

Hull and Deck Information

Hull Material: Fiberglass

Engine Information

Engines: 1

Manufacturer: Volvo

Model: Penta 7.4 Gi

Engine Type: Inboard

Fuel Type: Gas/Petrol

DETAILED INFORMATION

Manufacturer Provided Description

With a centerline at a full 25 feet, the Cobalt 252 is spacious. Contoured for comfort at full throttle, the bow seats accommodate up to four friends in layabout style. The cockpit of the 252 invites six friends into its wrap-around sport bucket seats and its luxurious curved bench astern. There's ample out-of-the-way stowage of the anchor in a drained, rubber-matted locker, while personal items stash in fully finished compartments under the seats. The ski locker is big enough for kneeboards and other oversize gear. The interior of the Cobalt 252 has a Sony digital sound system with four waterproof speakers. This versatile bowrider has a color-matched convertible top, and options include: a bow cushion insert, tonneau covers for bow and cockpit, side and stern curtains, a premium sound system, a transom shower, captain's call exhausts, rosewood inserts for the dash, a cockpit table, and docking lights. These optional features complement the fundamental strengths of the 252's design and construction. Cobalt's exclusive Hydrolam process - a multifaceted approach to total fiberglass construction - eliminates the extra weight and the inevitable rotting found in wood construction. Here's long-term dependability with no sacrifice of structural strength in one-piece construction of deck surfaces, interior side walls, and a floor reinforced with Nida-Core, a honeycomb synthetic that will quickly prove its superiority to both plywood and balsa. Kevlar does its part too. Applied over the entire length of the 252's keel, strakes, and chines, the Kevlar brings thermal stability together with minimum weight - with no loss of strength - to dampen vibration and make the Cobalt 252 tougher and more durable. An integrated stringer system delivers strength, appropriate flexibility and unprecedented resistance to time's toll, thanks to construction standards identical to the hull's and deck's. The 252's finish involves gelcoat and graphics that begin with a mask in the mold. A syntactic polyester foam called SprayCore 2000 brings extra structural strength to the sidewalls and the deck, while blocking print-through characteristics and improving resistance to impact. The exclusive bow scuff plate guards the 252's gelcoat during trailering. Aluminum backing plates are embedded in the fiberglass to anchor all hardware. A hand-stitched, leather-wrapped tilt steering wheel is standard. The extended running surface of the Cobalt 252 means quicker planing, enhanced stability, and tight, firm turns. The fully upholstered dash bears full instrumentation, including a compass and such up-to-the-minute indicators as engine temperature, a second temperature gauge for the water just below, and a gauge for water depth. The front of the flip-lid buckets fold upward for a safe, comfortable high-rise seating option, and an unobstructed view above the windshield. A hanging locker stows jackets and sweaters. The head is bright, airy, fully vented and comfortable. Cobalt's warranty protects the hull and deck for ten years (floors, stringers, motor mounts, transom, and all hull and deck joints); the power train for five years (engine, stern drive, intermediate housing, gauges, steering, power trim and tilt, electrical, fuel delivery, and their controls); and the gelcoat and interior for two years.

Equipment List

Cobalt 252 Specifications - Standard Equipment Canvas - Accessory power plug, 12 volt -

Compass, electronic - Depth & water - air temp. package - Hour meter - Leather - tilt steering wheel Stereo - AM-FM cassette - Bow speakers Exterior - Anchor locker - Bow walk-through doors - Head compartment w- Porta-Potti - Removable carpet, cockpit - Battery switch, single - Composite transom - Fiberglass stringer system - Fire extinguisher - Ignition safety switch - Bimini top - AM-FM, CD - Premium sound system - Stereo remote, transom - Subwoofer - Air compressor - Docking lights - Fire extinguisher halon system

Exclusions

Owner's personal belongings.

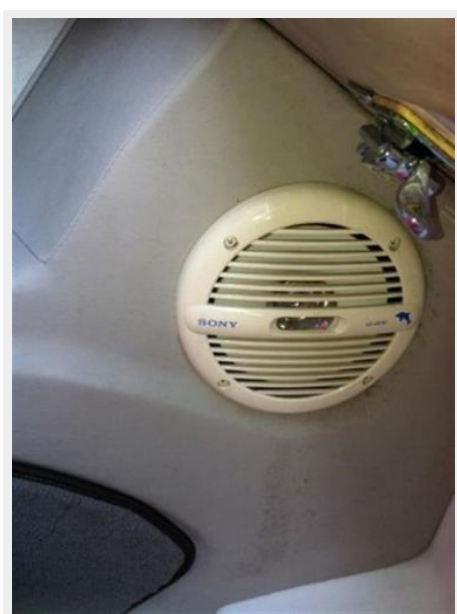
Disclaimer

The Company offers the details of this vessel or yacht in good faith but cannot guarantee or warrant the accuracy of this information nor warrant the condition of the vessel. A buyer should instruct his representatives, agents, or his surveyors, to investigate such details as the buyer desires validated. This vessel or yacht is offered subject to prior sale, price change, or withdrawal without notice.

PHOTOS





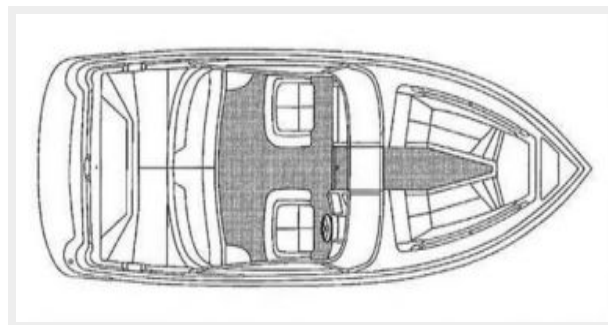




Manufacturer Provided Image



Manufacturer Provided Image



CONTACTS

Andrey Shestakov, leading yacht broker of the sales department of Shestakov Yacht Sales Inc. Shestakov Yacht Sales Inc., the official representative of the Miami/Fort Lauderdale FL headquarters.

Contact details

Email: **andrey@shestakovyachtsales.com**

Web: shestakovyachtsales.com/en/

Telephones

USA: **+1(954)274-4435**

Office hours

Monday – Saturday: **9:00 - 21:00 EDT**

Sunday: **closed**

Address



Harbour Towne Marina, 850 NE 3rd St,
STE 213, Dania, FL 33004