

BRUCE ROBERTS — BRUCE ROBERTS



Судостроитель: BRUCE ROBERTS

Год постройки: 1981

Модель: Крейсерский кеч

Цена: ЦЕНА ЯХТЫ ПО ЗАПРОСУ

Местонахождение: United States

Длина общая: 42' 0" (12.80m)

Ширина: 14' 6" (4.42m)

Макс. осадка: 4' 8" (1.42m)

Купить Bruce Roberts — BRUCE ROBERTS а также выбрать подходящую вам яхту из нашего каталога яхт вам поможет опытный яхтенный брокер Андрей Шестаков. На сегодняшний день компания Shestakov Yacht Sales Inc. имеет большое количество яхт в собственном списке продаж, а также тесно сотрудничает со всеми крупными яхтенными производителями по всему миру.

Для того чтобы купить яхту Bruce Roberts — BRUCE ROBERTS а также проконсультироваться по любому вопросу связанному с покупкой, продажей, чартером яхт позвоните по телефону **+7(918)465-66-44**.

ОГЛАВЛЕНИЕ

ОГЛАВЛЕНИЕ	2
ХАРАКТЕРИСТИКИ	3
Основная информация	3
Размеры	3
Скорость, вместимость и масса	3
Размещение	3
Корпус и палуба	3
Информация о двигателе	3
ПОДРОБНОЕ ОПИСАНИЕ	4
Dimensions	4
Accommodations	4
Galley	5
Electronics	5
Electrical	6
Deck and Hull Equipment	6
Mechanical & Engine Room	7
Broker's Comments	7
Sails and Rigging	8
Исключения	8
Отказ от ответственности	8
ФОТОГРАФИИ	9
КОНТАКТЫ	14
Контактная информация	14
Телефоны	14
Время работы	14
Адрес	14

ХАРАКТЕРИСТИКИ

Основная информация

Тип судна: Крейсерский кеч

Модельный год: 1981

Год постройки: 1981

Страна: United States

Размеры

Длина общая: 42' 0" (12.80m)

Ширина: 14' 6" (4.42m)

Макс. осадка: 4' 8" (1.42m)

Скорость, вместимость и масса

Водоизмещение: 36000 Pounds

Вместимость воды: 300 Gallons

Объем топливного бака: 280 Gallons

Размещение

Всего кают: 2

Всего коек: 2

Всего ком. состава: 1

Корпус и палуба

Материал корпуса: Fiberglass

Информация о двигателе

Двигатели: 1

Производитель: Ford Lehman

Модель: 4D-254

Тип топлива: Diesel

ПОДРОБНОЕ ОПИСАНИЕ

Dimensions

LOA: 42' LOD (12.8 m) Beam: 14' 6" (4.42m) Max Draft: 4' 8" (1.47 m) Ballast: 11,000 lbs (4,990 kilo) Displacement: 36,000 lbs (16.329 kilo)

Fuel: 280 gal (1.060 ltr) Fresh Water: 300 gal (1,136 ltr) in (2) tanks

Accommodations

The main Cabin is entered from either Port or Starboard full height Dutch doors to the Pilot House. There is 360 degree visibility from the Pilot House and comfortable seating. A complete Nav Station, all electronics, main breaker panel, and engine access is located in the Pilot House. A few steps down from the Pilot House is the large Aft master Stateroom. There are numerous full height hanging lockers, storage cabinets, drawers, and shelving to accommodate all of your cruising or live-a-board needs. Also in the aft cabin is a washer/dryer in a hide-a-way cabinet. Forward of the Pilot House is a full size Galley, to Port, with 17 cu ft Refrigerator/freezer, and large Dinette/lounge, to Starboard. The Dinette features an incredibly beautiful carved table, protected by a glass top, that must be seen to be appreciated. Abundant storage is evident throughout this area. A full hanging locker with deep storage area behind is forward of the Dinette, and a huge bathroom with shower and marble vanity is forward of the Galley, to Port. This bathroom cannot merely be called a "Head". Forward is a large private cabin with a double berth and work bench. There is also a large hanging locker and extra storage lockers available. THE ENTIRE VESSEL IS DESIGNED WITH A COMFORTABLE OPEN FLOW BETWEEN ALL AREAS, AND MAKES MAXIMUM USE OF HER INTERIOR SPACE FOR LIVING ACCOMMODATIONS AND STORAGE.

FULLY AIR CONDITIONED - 3 ZONE SYSTEM

- Large private aft with full queen berth and storage
- Concealed washer/dryer in aft cabin
- Central Pilot house with 360 degree visibility:
- Contains helm seat, Wood Binnacle w/wood steering wheel and compass, Companion seat, Nav Station,
- Doorways Port & Starboard (Dutch top/bottom opening doors), Electrical panel, All navigation equipment,
- Access to engine room, Storage lockers and shelves
- Fully air conditioned with 3 zone chilled water system
- Second private cabin forward w/double berth and workshop area
- Instantaneous propane water heater - no hot water tank needed
- White oak varnished interior - bright and airy
- Large storage lockers throughout

- All opening hatches fully screened
- HEAD and SHOWER:
- Electric vacu-flush system
- Marble vanity, Large shower area w/separate sump and holding tank (electric pump out), Storage w/tambour
- Wood doors, Instantaneous hot water heater
- Minimum 6'6" headroom throughout (7' in Galley & Dinette)

Galley

The U-Shaped Galley features a Huge 17cu Ft. Refrigerator/freezer, SS stove w/ 3 burner cook-top, and SS double sink. There are numerous storage cabinets for all of your supplies, dishware, and accessories. One prominent feature is the unique decorative glass panel cabinets above the refrigerator/freezer that lend an air of elegance to the entire space. A large expanse of counter top makes food prep and serving very convenient.

- Galley:
- Wood Tambour door and Frosted Glass front cabinets
- Huge 17 1/2 cu ft top load refrigerator & freezer w/ 4" insulation-efficient liquid cooled holding plate system-using
- 110 A/c motor or main engine
- Microwave-built in
- Coffee maker-built in
- Toaster-built in
- Food Processor-built in
- Double SS sink w/ hot-cold pressurized water
- 3 Burner propane stove w/ shut off valve & solenoid
- Pull out storage drawers
- Dinette:
- Custom wood table with carved relief under glass
- Extra storage under settee and cabinets behind
- Library
- Desk w/drawers
- Swivel chairs
- 110v wall sconces
- Oil lamp & 12v wall lighting

Electronics

A complete compliment of late model electronics allows for navigation anywhere in the world. Included is a forward reading sonar for added safety. Copper mesh has been incorporated in the original build in the cabin overhead to enhance reception and transmission strength of SSB or

Ham Radio.

- MOST OF THE ELECTRONICS HAVE BEEN REPLACED
- Furuno GPS Navigator GP-30
- Robertson Dataline AP 3000 Auto pilot (2004) - Recently rebuilt
- Standard Horizon VHF w/hailer
- 24 Mile Radar - JRC Rastar 3000 (2006)
- Interphase forward looking sonar - probe to 1200 ft.
- Datamarine depth sounder
- Raymarine i60 wind direction and speed
- Stereo 10 disc system
- Samsung 24" Flat screen TV
- Samsung DVD/VHS

Electrical

Electrical systems are number coded and installed to the highest quality standards. Number panels are hinged for easy access to wiring.

- All number coded wiring in dedicated chases
- 110v & 12v Electric panel w/inter phase meter for House, Engine starting, and Windlass slave batteries
- Full engine instrumentation with oil & temp alarms
- Swing out master battery switch panel
- Heart Marine 20 inverter - 2000 watts
- Optima 100 amp starting battery
- Slave battery for windlass
- 500 Amp Rolls house batter bank

Deck and Hull Equipment

The hull is solid fiberglass and intentionally overbuilt for blue water cruising. It is fully insulated with foam to maintain inside temperature and eliminate condensation.

- Unique Pilot House yacht with wide walk around decks
- Forward heavy wood, glassed over bowsprit w/dual anchor rollers
- 75 lb CQR w/ 200 ft HT 3/8 chain
- 65 lb FOB ship's anchor w/chain & rode
- 2 storage lockers
- Lofrans electric windlass (rebuilt 2008)
- Aft deck has beautiful extended height varnished teak rail
- All cleats are SS w/SS backing plates
- Shower on aft deck

- 2 Bottle propane locker to port, 1 bottle propane locker starboard-all aluminum propane bottles
- 45 lb CQR anchor in aft locker w/3/4 nylon rode
- Outboard motor crane and mount
- Custom aft dinghy davit system w/crank - tender can be raised from aft deck with crew aboard the tender
- Deck house & cabin Awl gripped 2007
- CUSTOM BOAT AWNING - 3 SECTIONS

Mechanical & Engine Room

The engine room is fully accessible from the pilot house. Large opening over sized engine compartment. There are numerous advanced systems designed by a professional engineer to be economical and highly efficient.

- Ford Lehman engine w/constant velocity joint between shaft & engine (4D-254 80 HP) - Total 4000 hours - 1690 since MOH
- Rebuilt transmission
- Fresh water engine back wash system
- SK Watermaker - 20 GPH
- 110v & 12v lighting in engine room
- Air blower fully vents entire engine compartment
- Fuel & water tanks to Port & Starboard
- Refrigerator/Freezer compressor runs off 110v motor
- Dockside water inlet w/valve to feed fresh water to engine for cooling check
- New plumbing and tinned wiring
- New engine compartment sound-proofing
- Racor fuel filter
- Dual alternators-75 amp & 100 amp w/ smart regulator
- Water filtration system w/prefilter for water maker
- Chiller system for A/C(2008) Diversion manifold to run engine
- Hot water heating system
- High pressure dockside water water system - services entire boat

Broker's Comments

THIS IS A UNIQUE VESSEL FOR THE DISCRIMINATING CRUISER OR LIVE-A-BOARD. SHE IS OVERBUILT IN EVERY WAY TO WITHSTAND THE RIGORS OF OCEAN CROSSING. SHE ALSO HAS UPGRADED COMMERCIAL GRADE MECHANICAL SYSTEMS WITH MANY REDUNDANCIES FOR THE HIGHEST RELIABILITY POSSIBLE. IF YOU ARE LOOKING FOR A VESSEL THAT CAN TRULY BE CALLED A BLUE WATER CRUISER, AND CAN ALSO TRANSIT MANY AREAS INACCESSIBLE TO OTHER SAILBOATS DUE TO THEIR DRAFT

OR MAST RESTRICTIONS, THIS VESSEL WILL SATISFY ALL OF YOUR NEEDS. "STRENGTH", "RELIABILITY", "SPACIOUS ACCOMMODATIONS", "EXCELLENT STORAGE", "EXCELLENT APPEARANCE".

OWNER HAS REPORTED SAILING SPEEDS OF UP TO 11-12 KTS

ORIGINAL OWNER VESSEL -BUILT IN CANADA - OWNER HAS CRUISED THE MEDITERANEAN AND THE RIVERS AND CANALS OF EUROPE (masts fold down)

Sails and Rigging

The unique feature of this vessel is her heavily reinforced tabernacle system which allows both masts to be lowered for clearing fixed bridges. This can conveniently be done from the deck of the vessel with no outside assistance or equipment. The system is functional and very rugged. This vessel has crossed the Atlantic twice without difficult

- Pro-furl roller furling system on foresail and staysail
- Forespar EZ furl roller furling on Main and Mizzen sails
- Main Sail, 120% Genoa, working jib, and Staysail
- 3 halyard winches on main mast
- Reaching pole attached to mast
- In mast roller furling for Main Sail & Mizzen Sail
- Boom gallows for main boom
- 2 Primary self tailing Maxwell #28 winches for head sail sheets
- 2 Secondary Bariant #28 winches for sheets

Исключения

При продаже яхты исключаются личные вещи владельца.

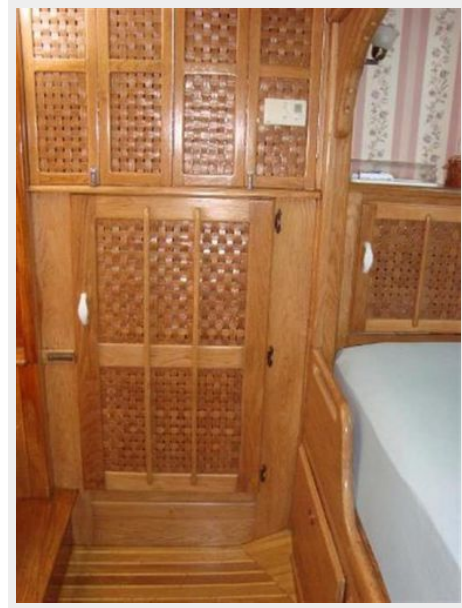
Отказ от ответственности

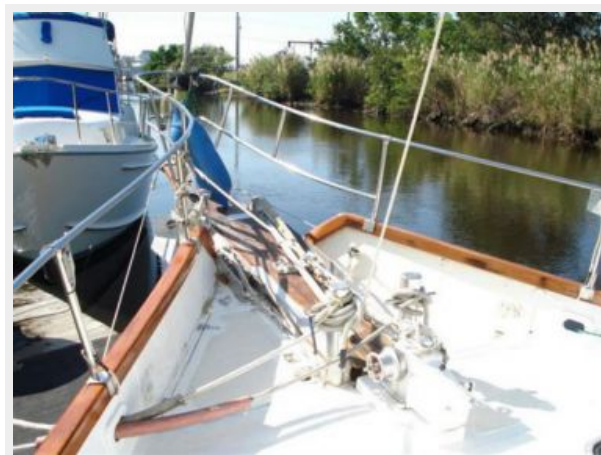
Компания предоставляет описание судна или яхты добросовестно, но не может гарантировать точность этой информации, а также не ручается за техническое состояние. Покупатель должен проинструктировать своих агентов или оценщиков исследовать представленную информацию более подробно, по собственному желанию. Продажа судна или яхты, изменение цены или снятие с продажи будет происходить без предварительного уведомления.

ФОТОГРАФИИ











КОНТАКТЫ

Андрей Шестаков (Andrey Shestakov) – ведущий яхтенный брокер отдела продаж яхт и судов компании Shestakov Yacht Sales Inc. Официальный представитель Shestakov Yacht Sales Inc. для русскоговорящих клиентов в центральном офисе компании в Майами/Форт Лодердейл/Флорида/США.

Контактная информация

Email: andrey@shestakovyachtsales.com

Web: shestakovyachtsales.com

Телефоны

Краснодарский край: **+7(918)465-66-44**

США, Майами, Флорида: **+1(954)274-4435**

Время работы

Понедельник – Суббота: **9:00 - 21:00**
EDT

Воскресенье: **Закрето**

Адрес



Harbour Towne Marina, 850 NE 3rd St,
STE 213, Dania, FL 33004