

PURA VIDA — SEA RAY



Судостроитель: [SEA RAY](#)

Год постройки: 2007

Модель: Крейсер

Цена: **ЦЕНА ЯХТЫ ПО ЗАПРОСУ**

Местонахождение: United States

Длина общая: 55' 0" (16.76m)

Ширина: 15' 11" (4.85m)

Мин. осадка: 4' 5" (1.35m)

Макс. осадка: 4' 7" (1.40m)

Крейс. скорость: 25 Kts. (29 MPH)

Макс. скорость: 31 Kts. (36 MPH)

Купить **PURA VIDA — SEA RAY** а также выбрать подходящую вам яхту из нашего каталога яхт вам поможет опытный яхтенный брокер Андрей Шестаков. На сегодняшний день компания **Shestakov Yacht Sales Inc.** имеет большое количество яхт в собственном списке продаж, а также тесно сотрудничает со всеми крупными яхтенными производителями по всему миру.

Для того чтобы купить яхту **PURA VIDA — SEA RAY** а также проконсультироваться по любому вопросу связанному с покупкой, продажей, чартером яхт позвоните по телефону **+7(918)465-66-44**.

ОГЛАВЛЕНИЕ

ОГЛАВЛЕНИЕ	2
ХАРАКТЕРИСТИКИ	5
Основная информация	5
Размеры	5
Скорость, вместимость и масса	5
Размещение	5
Корпус и палуба	6
Информация о двигателе	6
ПОДРОБНОЕ ОПИСАНИЕ	7
Vessel Walkthrough	7
Salon	7
Galley	8
VIP Cabin	8
Guest Head	8
Master Cabin	9
Master Head	9
Foredeck	10
Hardtop Equipment	10
Lower Cockpit/Swim Platform	10
Upper Cockpit	11
Tender	11
Helm Area	11
Engine Room	11
Electrical	12
Remarks	12
Exclusions	12
Disclaimer	12
Исключения	12

Отказ от ответственности	13
ФОТОГРАФИИ	14
Salon Looking to Starboard	14
Salon Settee	14
Salon Entrance	14
Salon Popup TV	14
Galley	14
Galley Looking Forward	14
Galley Looking Aft	15
VIP	15
VIP to Starboard	15
VIP to Port	15
VIP Walk in Locker	15
VIP/Day Head	15
Master	16
Master	16
Master to Starboard	16
Master to Port	16
Master Looking Forward	16
Foredeck	16
Sun Lounge	17
Foredeck	17
Anchor Detail	17
New Style Hardtop/Windshield	17
Hardtop Equipment	17
Walk Around Side Deck	17
Aft Deck Area	18
Lower Deck	18
Aft Deck Seating	18

BBQ Grill	18
Lower Cockpit Drink Fridge	18
Inviting Open Area	18
Adjustable Seating	19
Adjustable Seating	19
Adjustable Seating	19
Upper Deck Bar & TV	19
One of Two Sun Roofs	19
Companion Seat	19
Tender	20
Helm	20
Helm Detail	20
Helm Outboard	20
MAN Screens Overhead	20
Onan Panel at Helm	20
Starboard Engine	21
Port Engine	21
Spare Props	21
AC Units	21
Engine Room Forward	21
Electric Battery Switch	21
Glendinning & Generator	22
Touchscreen Electrical Panel Controls	22
Pura Vida	22
КОНТАКТЫ	23
Контактная информация	23
Телефоны	23
Время работы	23
Адрес	23

ХАРАКТЕРИСТИКИ

Основная информация

Тип судна: Крейсер

Подкатегория: Express

Модельный год: 2008

Год постройки: 2007

Страна: United States

Верх: Hardtop

Размеры

Длина общая: 55' 0" (16.76m)

Длина по ватерлинии: 53' 0" (16.15m)

Длина палубы: 58' 0" (17.68m)

Ширина: 15' 11" (4.85m)

Мин. осадка: 4' 5" (1.35m)

Макс. осадка: 4' 7" (1.40m)

Длина привального бруса: 60' 0"
(18.29m)

Скорость, вместимость и масса

Крейс. скорость: 25 Kts. (29 MPH)

Крейсерская скорость поворота: 2000 Kts.

Макс. скорость: 31 Kts. (36 MPH)

Макс. скорость поворота: 2300 Kts.

Водоизмещение: 53500 Pounds

Вместимость воды: 200 Gallons

Вместимость сточного бака: 70 Gallons

Объем топливного бака: 825 Gallons

Размещение

Всего кают: 2

Всего коек: 2

Спальные места: 4

Всего ком. состава: 2

Корпус и палуба

Материал корпуса: Fiberglass

Материал палубы: Teak

Комплектация корпуса: Modified V-Hull

Отделка корпуса: Aluminum

Информация о двигателе

Двигатели: 2

Производитель: MAN

Модель: D2876LE423

Тип двигателя: Inboard

Тип топлива: Diesel

ПОДРОБНОЕ ОПИСАНИЕ

Vessel Walkthrough

Boarding via the yacht's swim platform there is plenty of room to pass the stowed tender on the hydraulic platform to board either the port or starboard steps into the Lower Cockpit. The Lower Cockpit offers seating, a grill and a fridge. One step up the Upper Cockpit offers a unique pivoting settee, a fixed table, full bar, icemaker and TV.

The Helm area is fully air conditioned, offers a great view with ample seating and complete electronics.

Down six teak tread steps is the yacht's Salon/Galley area. Aft is a private Master Cabin with en suite Head and forward is the VIP Accommodations also with en suite facilities. The Salon sofa also converts to sleep two.

The Engine Room is stand up height and accessed via a hatch in the Lower Cockpit.

Salon

Down six teak tread steps from the Upper Cockpit is the Salon and Galley area. The Salon area is to starboard and consists of an Ultra Leather four to five person settee that can convert to sleep two. The settee is L shaped facing forward and centerline. Just inboard at the aft part of the settee is a high gloss cherry built end table with storage below. Above is a small storage drawer and a five shelf bookcase with a frosted glass and cherry trimmed door.

Above the settee are nine high gloss cherry storage cabinets. Just below are three large in hull deadlights behind cherry wood mini blinds. Next forward is a cabinet that matches the bookcase but instead contains the yacht's entertainment electronics. They consist of:

KVH TV control center & service port Cyber Home Progressive Scan DVD player (2) Direct TV SAT TV receiver HD Clarion 6 disc CD changer for outside stereo Bose Lifestyle AM/FM/CD/DVD player w/hard drive storage system Glomex Terrestrial TV tuner/gain adjustment Aux "in" ports

Just below is a high gloss cherry end table with two storage drawers. Overhead are eight halogen mini spots, LCD rope lighting behind a cherry soffit and a sliding cover to the Foredeck fixed sun roof.

The sole of this area is a maple hardwood with three access hatches to equipment and storage below.

Also in the Salon is a five channel Bose speaker system with a hidden subwoofer, a CO alarm and a small coffee table with storage within.

Galley

Opposite to port is the Galley area with a contiguous hardwood sole, a matching skylight above and three fixed hull deadlights with cherry blinds. The Galley is J shaped and offers the following equipment:

Corian countertop Under mount stainless steel sink w/Corian cover Trash chute w/Corian cover Kenyan Ceran top 3 burner cook top w/Corian cover Stainless steel faucet w/pullout spray Separate drinking water tap Under counter Sub Zero stainless steel fridge Under counter Sub Zero stainless steel freezer Tappan stainless steel convection/grill/microwave oven behind a cherry door Pegged dinnerware & fixed glass storage (11) Cherry cabinet doors Pullout cherry pantry storage behind a cherry door (3) Cherry drawers Large cherry storage cabinet above washer/dryer Splendide 2000 S washer/dryer combo behind cherry drawer Power vent (8) Halogen overhead mini spots LCD rope lighting behind a cherry soffit Beam central vacuum outlet

A cabinet in the center island houses a popup Sharp Aquos 37" LCD HD TV facing the Salon settee.

VIP Cabin

Forward of the Salon is the private VIP Cabin with a centerline queen size berth with maple steps to make getting in easier. Below the berth is LED rope lighting in the toe kick. Either side of the padded headboard are directional reading lights. Outboard to both port and starboard are two oval stainless steel deadlights framed in a cherry soffit and hidden by cherry mini blinds. An upholstered feature above the berth allows for hidden LCD rope lighting. Also above the berth is a sliding Ocean Air cover and insect screen for the Foredeck deck hatch.

Cherry shelves either side of the berth serve as nightstands.

Aft to port is access to the VIP Head. The entry door is centerline.

To starboard is a cedar lined walk in closet with two drawers and two cabinets, a hanging rod and two overhead lights.

Next outboard is a Sharp Aquos 20" LCD TV and a built in Cyber Home Progressive scan DVD player.

Also in the VIP are two Bose mini cube stereo speakers, nine overhead halogen mini spots, a CO alarm, digital AC controls and a carpet runner.

Guest Head

The Forward Guest Head severs both the Salon and VIP Cabin by having two access doors making it the Day Head as well. The sole is ceramic tile. The toilet is a Vacuflush model. The curved front vanity has a cherry storage door below and Corian countertop above with a under mount stainless steel sink. A beveled edge mirrored medicine cabinet is above the sink with two dimmable halogen mini spots above. There is a full size beveled edge dressing mirror on the back of the VIP door.

The stall shower has a molded seat, an opening frosted stainless steel porthole, a handheld or wall mounted shower fixture, a curved Lucite sliding door, a Lucite side light and an overhead halogen mini spot. Also in the Head is an AC vent, an exhaust fan and a storage shelf for towels.

Master Cabin

The Master Cabin is aft of and two steps down from the Galley. Entering from the forward end there is a queen size berth aft of the aft bulkhead with an upholstered headboard and an AC delivery soffit above the berth with three dimmable halogen mini spots directed to the head of the bed.

Either side of the berth are cherry columns with LED lights behind frosted glass. Outboard are port and starboard half height hanging lockers with cedar lining and auto lights. Going forward to starboard is a chest of four large drawers with a high gloss cherry countertop. Above is a large three panel fixed deadlight offering lots of ambient lighting. Next forward is the access to the private Head.

At the foot of the berth is a built in Sharp Aquos 26" LCD TV. Below is a large cherry storage locker.

On the portside of the Master all is a raised two person dinette with a cherry table top and a padded removable vinyl cover. Above the dinette is a matching three panel hull side deadlight behind cherry blinds.

Also in this cabin are Bose stereo speakers, a hidden subwoofer, a carpet runner, a CO detector and eight additional halogen mini spots.

Of special note is the Wallhugger adjustable sleep system mattress with massage and tilt up foot and head positions.

Master Head

Accessed only from the Master Cabin is the private Master Head. The sole is ceramic tile. The bow front cherry vanity has one storage cabinet below and an under mount stainless steel sink in

the Corian countertop above. A beveled edge mirrored medicine cabinet is above the sink.

Outboard is an upgraded Sea Land Vacuflush toilet with push button electronic controls and a porthole behind cherry blinds.

The stall shower has a clear Lexan door, a handheld or wall mountable fixture, a seat, a light and an exhaust fan.

Also in the Head is a full size beveled edge dressing mirror on the back of the door, five overhead halogen mini spots and an AC vent.

Foredeck

Fiberglass nonskid deck Welded stainless steel bow rails w/double tubing forward (3) stanchions, life lines aft Stainless steel anchor davit Lofrans Project 1500 electric windlass Up & down foot switches for windlass 88 Lb. Plow anchor w/all chain rode Anchor locker stowed freshwater wash down spigot & hose Dual anchor locker access hatches ACR RCL 100 remote control spotlight Walk around side decks Sun pad w/removable cushions (4) Sun pad drink holders Stainless steel handrails at sun pad Midship spring line cleats Forward Cabin opening deck hatch International Navigation lights PVC rub rail w/stainless steel striker plate (2) Fixed skylights into Salon Two pane fixed windshield w/(2) opening power vents (2) 24V Windshield wipers w/washers "New Style" windshield flow into fixed hardtop

Hardtop Equipment

Dual trumpet air horns Hailer horn Fiberglass arch w/Raymarine 3' open array scanner Glomex Terrestrial TV antenna Sat weather & stereo antennas VHF antenna Garmin & Raymarine GPS sensors KVH Tracvision 4X Sat TV dome

Lower Cockpit/Swim Platform

Nonskid fiberglass decks Port & starboard molded boarding steps from side decks Snap in carpet liner (tan) (4) Stereo speakers 10" Subwoofer Full Tonneau cover, hardtop to transom (Black Sunbrella) Stainless steel handrails & (5) steps for portside boarding w/storage below Starboard side walk through transom gate up (3) steps & stainless steel handrail (2) Large storage trunks on transom L Shaped seating w/removable cushions & storage below LED Cockpit accent lighting Engine Room access hatch on gas shocks Hydraulic tender platform w/chocks & tie downs Hidden stainless steel swim ladder under platform Hot & cold shower aft, starboard side Movable teak Cockpit table Fiberglass cabinet w/Norcold refrigerator Stainless steel drink holders Starboard side cabinet w/forward shutoff valves & platform wired remote Bottom two steps to swim platform port & starboard have teak treads (2) Stainless steel rod

holders Kenyan electric grill w/stainless cover under hinged fiberglass cover

Upper Cockpit

One step up from the Lower Cockpit is the Upper Cockpit, equipment includes:

Teak deck over fiberglass Portside bar w/sink, Corian cutting board, trash chute, Ceran sink cover. Below are three cabinet doors, the most forward concealing a U Line icemaker. Cockpit AC controls Sharp 20" LCD Aquos TV mounted above bar (2) Bose outdoor stereo speakers Two person portside companion seat w/armrests and a fold down footrest (2) Stainless steel drink holders at companion seats Lockable glove box at companion seat 3 Position opening side windshield vent port & starboard Unique two piece rotational settee w/high gloss teak table on a stainless steel pedestal Clarion cockpit stereo remote (2) Glass opening sun roofs forward (6) Overhead stainless steel trimmed AC lights on dimmer (6) Overhead stainless steel trimmed DC lights on dimmer Cruiseair digital Cockpit AC controls Acrylic sliding door to cabin below slightly to port of center

Tender

Zodiac Yacht Line 11' RIB tender 30 HP 45 Honda OB Console steering Tach, speed, trim, fuel & volt gauges Built in seats for four Stainless bow rail Navigation lights Electric start Built in fuel tank Fire extinguisher

Helm Area

Contiguous teak sole (2) Helm seats w/full adjustments , armrests & fold down stainless steel rests Teak angled footrest Wood & leather tilt helm wheel Raymarine E 120, plotter, radar, monitor, SAT weather Garmin GPS MAP 7212 tach screen plotter Raymarine ST 8002 auto pilot w/course correction knob Ray 240 handset type VHF w/remote speaker & DSC ACR Point Pad URP 102 spotlight control Vetus bow & stern thruster integrated control MAN electronic engine controls Dedicated Helm Cruiseair AC control Ritchie 5" magnetic compass Bennett trim tab controls Sea Fire engine shutdown override switch Battery parallel switch Windlass switches, enable, up, down Windshield defroster system Skylight open/close switches Clarion stereo remote Telephone outlet Overhead panel w/(2) analog fuel gauges and MAN electronic gauges Overhead electronic panel for Onan generator Wiper switches Thruster/platform shutoff switches

Engine Room

800 HP MAN engines w/Vee drives (2) Mounted spare props (5) Cruiseair air conditioning compressors: 24,000 BTU 12,000 BTU 16,000 BTU 16,000 BTU 10,000 BTU Racor 500 for generator Dual Racor 1000 fuel filters for main engine w/vacuum gauges Generator coolant

recovery bottle Sea Fire Engine Room for suppression system Shower sump Freshwater spigot Sea Star hydraulic steering system 5 Point Reverso oil change system Compressor for air horns (4) Fluorescent Engine Room lights 7 Step Engine Room access ladder (3) Bilge pumps Central vacuum Manifold type hot & cold water distribution system

Electrical

12 Volt/24 Volt DC electrical system 12 Volt/24 Volt DC electrical system Touch Pad electrical panel near Galley w/smaller sub panel at Master berth Touch Pad light switches Touch Pad toilet functions w/digital waste tank gauge MASS 24V 450 amp Mastervolt charger (2) Vanner 60 amp battery equalizers (5) 8D Batteries (5) Marine electric battery switches Engine Room 12V panel w/(4) breaker protected circuits Engine Room 24V panel w/(9) breaker protected circuits Charles Industries 6 KVA iso transformer Charles Industries 12 KVA boot transformer 220V 50 Amp Glendinning shore cable reel (2) 110 Volt outlet in Engine Room Onan 21.5 KW genset in sound shield (2) Big Bay battery disconnect switches

Remarks

PURA VIDA is a great example of the popular 55' Sea Ray Sundancer. She has the important options including bow and stern thruster, Cockpit AC, hydraulic platform and a RIB tender.

Serious seller has priced her to move quickly!

Note: After 2009 this same model (same length) was re designated as the 580 Sundancer and has an actual LOA of 60'0" with her hydraulic platform.

Exclusions

While every effort was made to list all pertinent included equipment aboard PURA VIDA, there are some personal belongings aboard. Prospective purchasers should assume any item not specifically mentioned herein will not convey at closing.

Disclaimer

The Company offers the details of this vessel in good faith but cannot guarantee or warrant the accuracy of this information nor warrant the condition of the vessel. A buyer should instruct his agents, or his surveyors, to investigate such details as the buyer desires validated. This vessel is offered subject to prior sale, price change, or withdrawal without notice.

Исключения

При продаже яхты исключаются личные вещи владельца.

Отказ от ответственности

Компания предоставляет описание судна или яхты добросовестно, но не может гарантировать точность этой информации, а также не ручается за техническое состояние. Покупатель должен проинструктировать своих агентов или оценщиков исследовать представленную информацию более подробно, по собственному желанию. Продажа судна или яхты, изменение цены или снятие с продажи будет происходить без предварительного уведомления.

ФОТОГРАФИИ

Salon Looking to Starboard



Salon Settee



Salon Entrance



Salon Popup TV



Galley



Galley Looking Forward



Galley Looking Aft



VIP



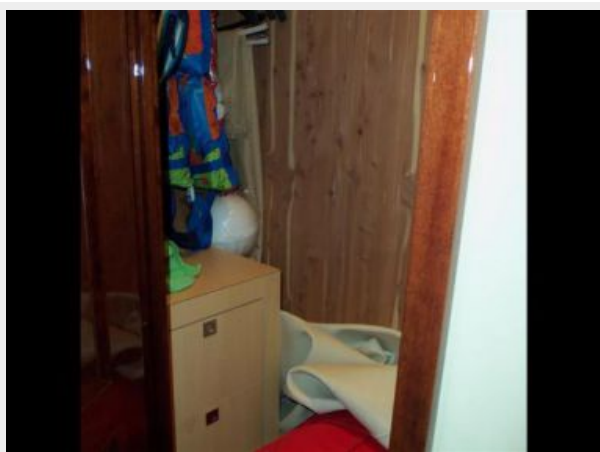
VIP to Starboard



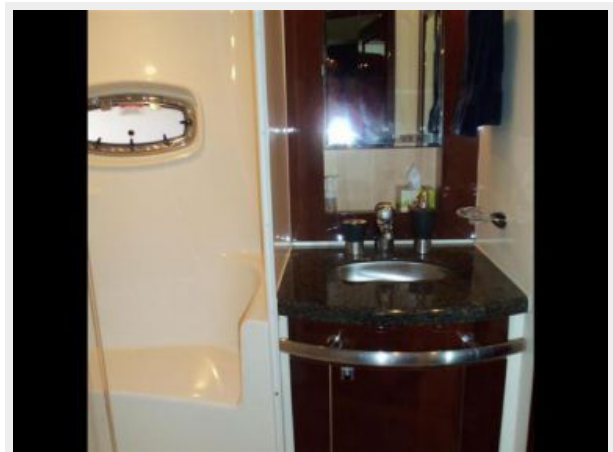
VIP to Port



VIP Walk in Locker



VIP/Day Head



Master



Master



Master to Starboard



Master to Port



Master Looking Forward



Foredeck



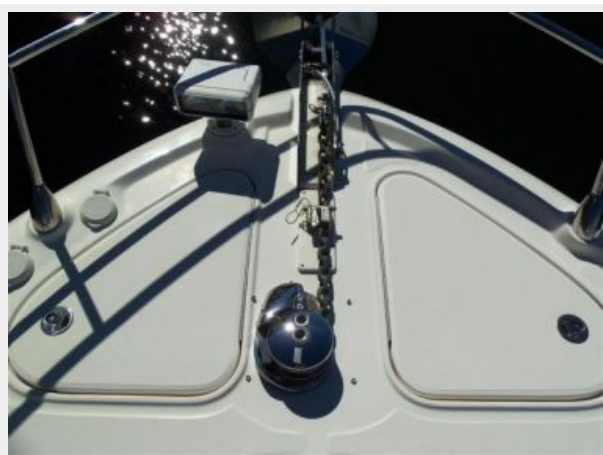
Sun Lounge



Foredeck



Anchor Detail



New Style Hardtop/Windshield



Hardtop Equipment



Walk Around Side Deck



Aft Deck Area



Lower Deck



Aft Deck Seating



BBQ Grill



Lower Cockpit Drink Fridge



Inviting Open Area



Adjustable Seating



Adjustable Seating



Adjustable Seating



Upper Deck Bar & TV



One of Two Sun Roofs



Companion Seat



Tender



Helm



Helm Detail



Helm Outboard



MAN Screens Overhead



Onan Panel at Helm



Starboard Engine



Port Engine



Spare Props



AC Units



Engine Room Forward



Electric Battery Switch



Glendinning & Generator



Touchscreen Electrical Panel Controls



Pura Vida



КОНТАКТЫ

Андрей Шестаков (Andrey Shestakov) – ведущий яхтенный брокер отдела продаж яхт и судов компании Shestakov Yacht Sales Inc. Официальный представитель Shestakov Yacht Sales Inc. для русскоговорящих клиентов в центральном офисе компании в Майами/Форт Лодердейл/Флорида/США.

Контактная информация

Email: andrey@shestakovyachtsales.com

Web: shestakovyachtsales.com

Телефоны

Краснодарский край: **+7(918)465-66-44**

США, Майами, Флорида: **+1(954)274-4435**

Время работы

Понедельник – Суббота: **9:00 - 21:00**
EDT

Воскресенье: **Закрито**

Адрес



Harbour Towne Marina, 850 NE 3rd St,
STE 213, Dania, FL 33004