

PERSEVERANCE II — OCEANFAST



Builder: OCEANFAST

Year Built: 1996

Model: Motor Yacht

Price: PRICE ON APPLICATION

Location: United States

LOA: 123' 0" (37.49m)

Beam: 27' 0" (8.23m)

Min Draft: 6' 0" (1.83m)

Max Draft: 6' 0" (1.83m)

Cruise Speed: 12 Kts. (14 MPH)

Max Speed: 16 Kts. (18 MPH)

Our experienced yacht broker, Andrey Shestakov, will help you choose and buy a yacht that best suits your needs **Perseverance II — OCEANFAST** from our catalogue. Presently, at Shestakov Yacht Sales Inc., we have a wide variety of yachts available on our sale's list. We also work in close contact with all the big yacht manufacturers from all over the world.

If you would like to buy a yacht **Perseverance II — OCEANFAST** or would like help answering any questions concerning purchasing, selling or chartering a yacht, please call **+1(954)274-4435**

TABLE OF CONTENTS

TABLE OF CONTENTS	2
SPECIFICATIONS	4
Overview	4
Basic Information	4
Dimensions	4
Speed, Capacities and Weight	4
Accommodations	5
Hull and Deck Information	5
Engine Information	5
DETAILED INFORMATION	6
Overview	6
Dining & Main Salon	6
Galley & Laundry Equipment	6
Staterooms	7
Sky-Lounge and Sundeck	7
Communication and Navigation	8
Entertainment	9
Mechanical Equipment	9
Generators & Electrical	10
Deck Equipment	10
Tender & Toys	11
Crew Accommodations	11
Safety & Fire Equipment	11
Disclaimer	12
Exclusions	12
Disclaimer	13
PHOTOS	14
Sundeck	14

Dining	14
Salon	15
Salon	15
Dining	15
Master Stateroom	15
Guest Stateroom	15
Guest Stateroom	16
Guest Stateroom	16
Aft Deck	16
Aft Deck	16
Galley	17
Sundeck	17
Garage	17
Engine Room	17
Engine Room	17
Sky Lounge	18
Dining	18
Master Stateroom	19
CONTACTS	21
Contact details	21
Telephones	21
Office hours	21
Address	21

SPECIFICATIONS

Overview

PRICE JUST REDUCED..... FEATURED YACHT AT THE 2014 FT. LAUDERDALE BOAT SHOW - October 30 - November 3. TAKE A CLOSER LOOK AT LOM EXT SLIP 205.....Perseverance II offers the volume of a much larger yacht carrying a 4 stateroom layout with an on-deck Master. The out-door space is unparallel to any comparable yacht in her class. Having completed a major refit in 2012, Perseverance II is ready to go cruising.

Basic Information

Category: Motor Yacht

Sub Category: Tri-Deck

Model Year: 1996

Year Built: 1996

Refit Year: 2012

Refit Type: Major

Country: United States

Vessel Top: Enclosed P.H. W/Sundeck

Fly Bridge: Yes

Dimensions

LOA: 123' 0" (37.49m)

LWL: 104' 0" (31.70m)

Beam: 27' 0" (8.23m)

Min Draft: 6' 0" (1.83m)

Max Draft: 6' 0" (1.83m)

Speed, Capacities and Weight

Cruise Speed: 12 Kts. (14 MPH)

Max Speed: 16 Kts. (18 MPH)

Max Speed Range: 2000 Kts.

Displacement: 190000 Pounds

Water Capacity: 1060 Gallons

Holding Tank: 396 Gallons

Fuel Capacity: 10000 Gallons

Accommodations

Total Cabins: 4

Total Berths: 5

Sleeps: 10

Total Heads: 5

Crew Cabin: 3

Crew Berths: 6

Crew Sleeps: 6

Crew Heads: 3

Hull and Deck Information

Hull Material: Fiberglass

Hull Configuration: Semi-Displacement

Hull Color: White

Exterior Designer: Jon Bannenberg

Engine Information

Engines: 2

Manufacturer: MTU

Model: 8V396 TE94

Engine Type: Inboard

Fuel Type: Diesel

DETAILED INFORMATION

Overview

Perseverance II carries 4 staterooms with an on-deck master. Having undergone a major refit in 2012 including a complete paint job she shows in excellent condition and ready to go cruising. Powered by twin MTU 8V396 TE94 with the W5's completed in 2012. Perseverance II offers the interior volume and exterior space comparable to much larger yachts. Niad stabilizers, KVH V-Sat television, on-deck master, sky-lounge, tender garage and spacious sun-deck, Perseverance II stands alone in her class. Under the present ownership, she has spent a considerable amount of time cruising the East Coast, Caribbean and Great Lakes.

Dining & Main Salon

Entering from the aft deck will take you into the dining room with seating for eight. The dining arrangement is separate to the main salon looking aft. Included are buffet tables and fine China storage throughout. Walking forward into the main salon are three separate couches, full length windows and complete entertainment center with 55" TV and two adjoining desk. Forward of the main salon on the starboard side is your day-head with access to the side decks.

Galley & Laundry Equipment

The galley up is on your port side forward of the main salon. With private access to the crew quarters, deck access and sky-lounge, this layout offers complete privacy while servicing below or above deck.

Miele induction ceramic cooktop- KM 5773

S/S Miele Rangehood

GE electric oven

Sharp Microwave

GE Freezer

Sub-Zero s/s Refrigerator

Whirlpool Dishwasher

Side-by-sink

Laundry Equipment:

Washer and dryers are located in the crew quarters and guest foyer

Miele Professional stackable washer and dryer in crew quarters

Miele stackable washer dryer in foyer

Staterooms

On-Deck Master Stateroom

The on-deck master stateroom is positioned on the main deck accessible on your starboard side through the main salon. The full width stateroom offers a his and hers en-suite bathroom with Jacuzzi tub and separate shower. Other features include full length windows, U-line refrigerator, entertainment system and large closets with ample storage.

Walking down to the additional three guest stateroom you land in a foyer with Miele washer and dryer to your port side. There are a total of 3 guest staterooms below deck with crew forward.

Fwd Starboard Stateroom

Queen size bed with large en-suite with shower. This guest stateroom can also be blocked off if needed from the other guest allowing for captain quarters with private entrance into the crew mess.

Aft Starboard Stateroom

Twin bed's with en-suite shower to starboard. Pull down pullman berths can handle two additional guest sleeping a total of four. Large portholes offer plenty of light for spacious stateroom.

Port Stateroom

The port stateroom offers a Queen size bed en-suite. Each stateroom offers plenty of space for storage with full-size hanging lockers and pull out drawers under the berths.

Sky-Lounge and Sundeck

Walking aft from the Bridge you will enter the large sky-lounge with full length windows, entertainment area and plenty of space for lounging. One of the two couches has a pull out bed offering an additional berth for guest and kids. The sky-lounge also has a private bath with shower. Outside from the sky-Lounge you will immediately notice what separates this yacht from the others. The enormous outdoor space aft of the sky-lounge and forward of the Bridge is what makes this yacht one of a kind.

Wet bar with granite bar top

Ice-maker

Refrigerator on starboard side

Outdoor seating for 12

Sky-light looking down to the aft deck

Teak flooring

Overhead electric blinds

Forward of the Bridge you will quickly see why this is a focal point on this yacht. Whether you're entertaining guest or spending time with your family this is the perfect outdoor space with shaded sun pads, BBQ, refrigerator and speakers.

The captain also has wing stations to both port and starboard making for easy docking.

Communication and Navigation

Communication:

SATcom

KVH Mini M SATcom

KVH V-SAT

KVH Trac Vision V-7 New 2013

Telephone System: Panasonic 1232 Easaphone Hybrid PBX with 20 extensions and 7 incoming lines

VHF: (2) Furuno FM - 2610

(2) HX 350

(2) HX 460 - FS-1562-15, HF Radio

Navigation

Radar(1): Furuno 12 Kw with ARPA

Radar(2): Furuno 6 Kw

Gyrocompass: Sperry NAVIGAT X Mark II

Magnetic Compass: Jupiter overhead compass & Cetrek Poseidon flush mount on fly-bridge.

Automatic Pilot: Sperry NavPilot 4000

Depth Sounder: Furuno FCV - 581(2) B&G Hydra Z speed & depth

Furuno AIS FA-150

Standard Horizon Quantum GX23605

ACR RCL 300 Searchlight

Gateway Computer with 22" Dynex monitor

Nobletec Navigation System

Furuno Navtex NX 700

(6) FM walkie-talkies

Alden 406 mhz Satfind EPIRB Model S-1015

Entertainment

Main Salon: 55" Pioneer Elite TV, Direct TV, Blu-ray, Yamaha entertainment

Master Stateroom: 42" Samsung flatscreen TV, DVD, Direct TV receiver

Fwd. Stb. Guest: 22" Insignia TV, DVD

Port Guest: 20" Sharp TV, DVD

Starboard Guest: 20" Sharp TV, DVD, Sharp stereo

Sky Lounge: 22" Sony TV, DVD, Sony Stereo, Denon receiver, Wii player, PSW player

Sky Lounge Deck: 42" flatscreen TV with electric cover, Outdoor stereo system

Fwd. Sundeck: Outdoor speakers

Aft Deck: Outdoor speakers

Mechanical Equipment

(2) MTU 8V396 TE 94 1500 hp

MTU W-5 completed 2012

Gearboxes: Reintjes 2.458:1 reduction gears

Propellers: (2)

Generators: (2)

Air Conditioning: Chilled Marine Air - New compressors in 2010

Watermaker

Stabilizer: Naiad 404/16

Bow Thruster: Electric Naiad VT-60, 75 hp, 20" diameter

Fuel Filtration: Racor

Sewage System: Orca IIA-12 Marine Sanitary Device

Fresh Water System: (10) Evac floor mounted 90 Aviara silent vac

Steering System: International Shipyards

Generators & Electrical

Output: 208/120V/3 phase/60 hz

Shore Power: Atlas, 75 kva Shore Power Converter

Generators:

(Port) 65 KW John Deer - NEW 2012

(Stb) 65 KW John Deer - NEW 2010

AGM 8D batteries new in 2013

(2) Mase Mastervolt 24/25 Battery Charger

Deck Equipment

Muir HR-7000/150 horizontal anchor windlass

(2) Muir docking capstans

(2) 166kg polished s/s S.H.H.P balanced Jeyco anchors

Fortress FX-125 stern anchor

(2) 433' 17.5mm galvanized NVK2 Chain

International Shipyards Davits

12' Sanguinetei Chiavarti telescopic gangway

Marquipt 10 step boarding ladder

Tender & Toys

(2) Yamaha WaveRunners with covers. Stowed on foredeck.

15' Caribe 90 HP Evinrude outboard. Stowed in garage.

Crew Accommodations

Forward located crew quarters accommodating six crew provide owner and guest complete privacy. The crew can reach all levels without interrupting the guest with access to the galley, bridge and lower staterooms. Crew accommodations consist of three separate cabin all en-suite with 2 over-under bunks in each.

Dining table for crew with wrap around seating

Whirlpool microwave

Kenmore dishwasher

Refrigerator

Large walk-in refrigerator with freezer

Whirlpool washer/dryer

Samsun 36" flatscreen TV

Overhead speakers

Saftey & Fire Equipment

Fire Equipment

Nomex fire suits

Chubb CO2

Unitor spiromatic breathing apparatus mode #217 U3/U4 with 1,400 liters free air capacity including spare cylinder

Pair of non-conductive insulated boots

Gel type fire blanket

Standard fire blanket

30 meters of lifeline, 15mm in diameter

Safety Equipment

(2) Viking 16-person USCG/SOLAS 1988 Approved life rafts

First Aid Kit

Waterproof flare canister

(4) Plastic life buoys

(2) Comet M.O.B. smoke and light signals

(2) 30 meter lifelines

(12) Comet parachute signal rockets, red Francis "ALDIS" 24cdc signal lamp

Portable signaling lamp

Complete set of international signal flags

Set of nautical rescue signal tabs

Comet Line throwing appliance

(2) Black Anchor Balls

Disclaimer

The Company offers the details of this vessel in good faith but cannot guarantee or warrant the accuracy of this information nor warrant the condition of the vessel. A buyer should instruct his agents, or his surveyors, to investigate such details as the buyer desires validated. This vessel is offered subject to prior sale, price change, or withdrawal without notice.

Exclusions

Owner's personal belongings.

Disclaimer

The Company offers the details of this vessel or yacht in good faith but cannot guarantee or warrant the accuracy of this information nor warrant the condition of the vessel. A buyer should instruct his representatives, agents, or his surveyors, to investigate such details as the buyer desires validated. This vessel or yacht is offered subject to prior sale, price change, or withdrawal without notice.

PHOTOS



Sundeck

Dining



Salon



Salon



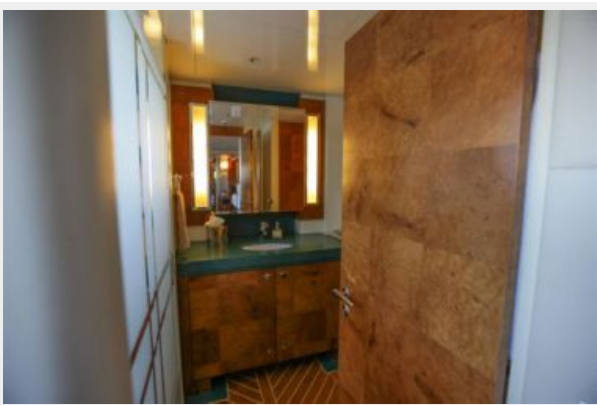
Dining



Master Stateroom



Guest Stateroom



Guest Stateroom



Guest Stateroom



Aft Deck



Aft Deck



Sundeck



Galley



Garage



Engine Room



Engine Room





Sky Lounge

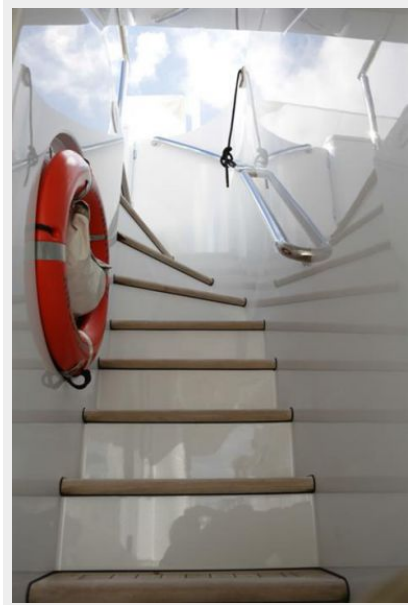


Dining



Master Stateroom





CONTACTS

Andrey Shestakov, leading yacht broker of the sales department of Shestakov Yacht Sales Inc. Shestakov Yacht Sales Inc., the official representative of the Miami/Fort Lauderdale FL headquarters.

Contact details

Email: andrey@shestakovyachtsales.com

Web: shestakovyachtsales.com/en/

Telephones

USA: +1(954)274-4435

Office hours

Monday – Saturday: **9:00 - 21:00** EDT

Sunday: **closed**

Address



Harbour Towne Marina, 850 NE 3rd St,
STE 213, Dania, FL 33004