

ESCAPADE — SELENE



Судостроитель: SELENE

Год постройки: 2000

Модель: Траулер

Цена: **ЦЕНА ЯХТЫ ПО ЗАПРОСУ**

Местонахождение: United States

Длина общая: 43' 0" (13.11m)

Ширина: 15' 8" (4.78m)

Мин. осадка: 5' 2" (1.57m)

Макс. осадка: 5' 2" (1.57m)

Крейс. скорость: 8 Kts. (9 MPH)

Макс. скорость: 9 Kts. (10 MPH)

Купить **Escapade — SELENE** а также выбрать подходящую вам яхту из нашего **каталога яхт** вам поможет опытный яхтенный брокер Андрей Шестаков. На сегодняшний день компания **Shestakov Yacht Sales Inc.** имеет большое количество яхт в **собственном списке продаж**, а также тесно сотрудничает со всеми крупными яхтенными **производителями** по всему миру.

Для того чтобы купить яхту **Escapade — SELENE** а также проконсультироваться по любому вопросу связанному с покупкой, продажей, чартером яхт позвоните по телефону **+7(918)465-66-44**.

ОГЛАВЛЕНИЕ

| | |
|-----------------------------------|----|
| ОГЛАВЛЕНИЕ | 2 |
| ХАРАКТЕРИСТИКИ | 7 |
| Обзор | 7 |
| Основная информация | 7 |
| Размеры | 7 |
| Скорость, вместимость и масса | 7 |
| Размещение | 8 |
| Корпус и палуба | 8 |
| Информация о двигателе | 8 |
| ПОДРОБНОЕ ОПИСАНИЕ | 9 |
| 43' Selene Overview | 9 |
| 43' Selene Vessel Walkthrough | 9 |
| 43' Selene Accommodations | 9 |
| 43' Selene Salon | 9 |
| 43' Selene Galley | 9 |
| 43' Selene Dining | 10 |
| 43' Selene Master Stateroom | 10 |
| 43' Selene Guest Stateroom | 10 |
| 43' Selene Laundry | 10 |
| 43' Selene Commissary | 10 |
| 43' Selene Raised Pilothouse | 10 |
| 43' Selene Flybridge | 11 |
| 43' Selene Aftdeck | 11 |
| 43' Selene Audio/Visual Equipment | 11 |
| 43' Selene Electronics | 11 |
| 43' Selene Electrical System | 12 |
| 43' Selene Engine and Mechanical | 12 |
| 43' Selene Deck Equipment | 13 |

| | |
|---------------------------------------|-----------|
| 43' Selene Tender | 14 |
| 43' Selene Safety and Fire Protection | 14 |
| 43' Selene Exclusions | 14 |
| 43' Selene Disclaimer | 14 |
| Исключения | 14 |
| Отказ от ответственности | 14 |
| ФОТОГРАФИИ | 16 |
| 43' Selene Dinghy | 16 |
| 43' Selene pilothouse | 16 |
| 43' Selene wide watch berth | 16 |
| 43' Selene wide watch berth | 16 |
| 43' Selene wide watch berth | 16 |
| 43' Selene electrical panel | 17 |
| 43' Selene | 17 |
| 43' Selene electrical panel | 17 |
| 43' Selene electrical panel | 17 |
| 43' Selene | 18 |
| 43' Selene | 18 |
| 43' Selene | 18 |
| 43' Selene | 18 |
| 43' Selene | 19 |
| 43' Selene | 19 |
| 43' Selene | 19 |
| 43' Selene Bow looking Port | 19 |
| 43' Selene | 19 |
| 43' Selene | 19 |
| 43' Selene | 20 |
| 43' Selene | 20 |
| 43' Selene | 20 |

| | |
|-----------------------------------|----|
| 43' Selene | 20 |
| 43' Selene | 20 |
| 43' Selene | 20 |
| 43' Selene | 21 |
| 43' Selene | 21 |
| 43' Selene | 21 |
| 43' Selene | 21 |
| 43' Selene pilothouse | 21 |
| 43' Selene Big Flybridge | 21 |
| 43' Selene Dinghy | 22 |
| 43' Selene | 22 |
| 43' Selene Stainless Magna Grill | 22 |
| 43' Selene Flybridge | 22 |
| 43' Selene Flybridge | 22 |
| 43' Selene Hatch to the cockpit | 22 |
| 43' Selene | 23 |
| 43' Selene | 23 |
| 43' Selene Flybridge | 23 |
| 43' Selene Hatch to the Cockpit | 23 |
| 43' Selene | 24 |
| 43' Selene | 24 |
| 43' Selene | 24 |
| 43' Selene - Dinner for 6 | 24 |
| 43' Selene stairs to washer/dryer | 25 |
| 43' Selene washer/dryer | 25 |
| 43' Selene | 25 |
| 43' Selene | 25 |
| 43' Selene | 26 |
| 43' Selene | 26 |

| | |
|---------------------------------|----|
| 43' Selene VIP Shower | 26 |
| 43' Selene VIP head | 26 |
| 43' Selene | 27 |
| 43' Selene bedroom | 27 |
| 43' Selene bedroom | 27 |
| 43' Selene bedroom | 27 |
| 43' Selene master storage | 28 |
| 43' Selene master storage | 28 |
| 43' Selene | 28 |
| 43' Selene | 28 |
| 43' Selene | 29 |
| 43' Selene | 29 |
| 43' Selene | 29 |
| 43' Selene Master Bath Sink | 29 |
| 43' Selene head | 30 |
| 43' Selene head | 30 |
| 43' Selene engine | 30 |
| 43' Selene | 30 |
| 43' Selene | 31 |
| 43' Selene | 31 |
| 43' Selene engine | 31 |
| 43' Selene engine | 31 |
| 43' Selene Westerbeke Generator | 31 |
| 43' Selene engine room | 31 |
| 43' Selene | 32 |
| 43' Selene profile | 32 |
| КОНТАКТЫ | 42 |
| Контактная информация | 42 |
| Телефоны | 42 |

| | |
|--------------|----|
| Время работы | 42 |
| Адрес | 42 |

ХАРАКТЕРИСТИКИ

Обзор

Escapade is a well-maintained Solo/Selene 2 stateroom, 2 head, raised pilothouse model that offers such amenities as a single, fuel efficient Cummins 180 hp main engine, stabilizers, bow thruster, fuel polishing system, watermaker and updated interior soft goods. Price reduced!

Seller reports a 3,000nm range at 6kts.

Основная информация

Тип судна: Траулер

Модельный год: 2000

Год постройки: 2000

Страна: United States

Верх: Open W/Bimini Top

Размеры

Длина общая: 43' 0" (13.11m)

Ширина: 15' 8" (4.78m)

Мин. осадка: 5' 2" (1.57m)

Макс. осадка: 5' 2" (1.57m)

Трапы: 26' 0" (7.92m)

Длина привального бруса: 43' 0" (13.11m)

Скорость, вместимость и масса

Крейс. скорость: 8 Kts. (9 MPH)

Дальность на крейсерской скорости: 2300

Макс. скорость: 9 Kts. (10 MPH)

Водоизмещение: 56000 Pounds

Вместимость воды: 260 Gallons

Вместимость сточного бака: 45 Gallons

Объем топливного бака: 980 Gallons

Размещение

Всего кают: 2

Всего коек: 4

Спальные места: 5

Всего ком. состава: 2

Корпус и палуба

Материал корпуса: Fiberglass

Материал палубы: Composite Fiberglass

Комплектация корпуса: Full
Displacement

Цвет корпуса: Grey

Отделка корпуса: Aluminum

Информация о двигателе

Двигатели: 1

Производитель: Cummins

Модель: 6BT 5.9M

Тип двигателя: Inboard

Тип топлива: Diesel

ПОДРОБНОЕ ОПИСАНИЕ

43' Selene Overview

Escapade is a well-maintained Solo/Selene 2 stateroom, 2 head, raised pilothouse model that offers such amenities as a single, fuel efficient Cummins 180 hp main engine, stabilizers, bow thruster, fuel polishing system, watermaker and updated interior soft goods. Price reduced!

Seller reports a 3,000nm range at 6kts.

43' Selene Vessel Walkthrough

Entering the salon from the covered aftdeck, you will find a settee with table to port, stairs to the guest staterooms and the engine room port forward, the galley forward, stairs to the raised pilothouse starboard forward and a lounge chair and cabinetry starboard aft. Step up into the pilothouse and you will find wing doors to each side deck and internal stairs to the flybridge. Step down into the guest foyer and you will find the engine room aft, guest stateroom to port, guest head to starboard and the master stateroom with ensuite head forward.

43' Selene Accommodations

Escapade offers a master stateroom forward with island queen size berth and ensuite head and a guest stateroom to port with over/under berths. the guest head with enclosed shower is to starboard.

43' Selene Salon

The salon offers a settee (Recovered in 2012) and hi/lo table to port, a lounge chair and cabinetry to starboard, teak & holly sole, curtains (2012), opening windows with screens on each side and a split door to the covered aftdeck.

43' Selene Galley

The galley is located forward in the salon.

- Norcold 12/24vdc/120vac refrigerator/freezer
- Magic Chef microwave oven
- Galley Maid Empress 3-burner gas cooktop and oven

- Grunert cold plate freezer
- Double stainless steel sinks
- Corian countertop
- Storage drawers and cabinets
- Hidden trash can compartment below the countertop
- Vitrifrigo refrigerator/freezer in the pilothouse
- Magma stainless steel BBQ grill on the flybridge

43' Selene Dining

Dining space is available at the salon settee and hi/lo table.

43' Selene Master Stateroom

The master stateroom is forward and offers an island queen size berth, reading lights, 4 portlights, overhead hatch, shelves, nightstands, 2 cedar-lined hanging lockers, storage drawers and cabinets, mirror, fans, teak & holly sole and an ensuite head with tub/shower.

43' Selene Guest Stateroom

The guest stateroom is to port and offers over/under berths, cedar-lined hanging locker, reading lights, 2 portlights, nightstand and a storage drawer and cabinets. the guest head is to starboard and offers an enclosed shower.

43' Selene Laundry

- Spendide Comb-O-Matic 6000 washer/dryer

43' Selene Commissary

The Commissary is located between the lazarette and the engine room and offers a large amount of storage space.

43' Selene Raised Pilothouse

The raised pilothouse offers a full helm forward with storage underneath, wing doors to each side

deck, internal stairs to the flybridge, a benchseat, a berth aft of the benchseat, teak & holly sole, overhead hatch, book shelf starboard aft, chart counter and storage port forward and a Vitrefrigo refrigerator/freezer.

43' Selene Flybridge

The flybridge offers a bimini, hinged mast & boom, non-skid deck, 2 X Garelick Eez-In helm seats, helm forward with a chart cabinet, internal stairs with a hatch to the pilothouse and a stainless steel ladder with a hatch to the aftdeck.

43' Selene Aftdeck

The covered aftdeck offers a non-skid deck, teak cap rails, transom door to the swimplatform, split door to the salon, same level access to each side deck, hot/cold fresh water shower, ladder with a hatch to the flybridge and 2 deck chairs.

43' Selene Audio/Visual Equipment

- Samsung flat screen TV in the salon
- Clarion CMD4A AM/FM/CD/MP3 Sat ready radio in the salon
- Sylvania VCR/DVD/CD player in the salon
- Shakespeare Seawatch TV antenna

43' Selene Electronics

- Furuno 4kW Radar (2010)
- Furuno Navnet 3D Multi Function Display in the pilothouse and on the flybridge (2010)
- Furuno Navpilot autopilot in the pilothouse with remote on the flybridge - (2010)
- Furuno RD-30 navigational organizer in the pilothouse and on the flybridge (2010)
- Furuno FA50 AIS transponder (2010)
- Ritchie Powerdamp magnetic compass in the pilothouse and on the flybridge
- Icom IC-M604 VHF in the pilothouse
- West Marine 580 VHF in the pilothouse with remote on the flybridge

- Plastimo barometer and clock in the pilothouse

43' Selene Electrical System

- Westerbeke 12.5BTDA 12.5 kW generator with 1257 hours
- Heart Interface 2500 watt inverter with remote panel
- ProMariner 40 amp battery charger
- 2 X 50 amp shore cords
- Galvanic isolator
- Balmar 160 amp alternator with Max Charge regulator
- Delco Remy 105 amp alternator
- 4 X 8D AGM house batteries (2010)
- 1 X 8D AGM main engine start battery (2010)
- 2 X 4D AGM bowthruster batteries (2010)
- 1 X Group 31 generator start battery (2012)

43' Selene Engine and Mechanical

- Single Cummins 6BTA5.9-M 180hp main engine with 2,234 hours
- Twin Disc MG5050 gearbox
- Morse engine controls
- Dripless shaft seal
- Racor 900FG fuel filter with vacuum gauge for main engine
- Racor 900FH fuel filter for fuel polishing system
- Racor R24p fuel filter for the generator
- Fuel manifold
- Reverso oil change system
- Hy Drive hydraulic steering system

- Sidepower bowthruster
- Naiad 174-1 stabilizer system with Multi-Sea II control panel
- Marine air systems reverse cycle air conditioning/heating system (3 X 16,000 BTU units)
- Fresh water manifold
- Flojet fresh water system expansion tank
- Raritan 12 gallon water heater
- Village Marine Tec 450gpd watermaker
- Jabsco electric heads
- Tankwatch III holding tank level monitor system

43' Selene Deck Equipment

- Muir HR2500 dual gypsy anchor windlass with foot controls and remote controls at each helm
- Rocna 88lb anchor with 275' 3/8" anchor chain
- CQR 60lb anchor with 20' 3/8" anchor chain and 250' 3/4" nylon rode
- Double stainless steel anchor rollers
- Stainless steel sampson post
- Non-skid decks
- Stainless steel rails forward and teak cap rails aft
- Stainless steel deck hardware
- Portuguese bridge with storage lockers
- Windscreen cover
- Washdown on the foredeck
- Stainless steel swim ladder
- Hinged swim platform
- Boarding gates amidships each side

43' Selene Tender

- 2003 10'3" Caribe RIB with forward storage and a middle benchseat
- Honda 15hp 4-stroke outboard
- Hinged mast and boom for tender davit

43' Selene Safety and Fire Protection

- Jabsco searchlight
- Fire extinguishers
- Rule bilge pumps
- Fireboy-Xintex 5-2A propane control in the galley
- ACR EPIRB
- Radar reflector
- Life jackets and life ring

43' Selene Exclusions

Sellers' personal belongings

43' Selene Disclaimer

The Company offers the details of this vessel in good faith but cannot guarantee or warrant the accuracy of this information nor warrant the condition of the vessel. A buyer should instruct his agents, or his surveyors, to investigate such details as the buyer desires validated. This vessel is offered subject to prior sale, price change, or withdrawal without notice.

Исключения

При продаже яхты исключаются личные вещи владельца.

Отказ от ответственности

Компания предоставляет описание судна или яхты добросовестно, но не может

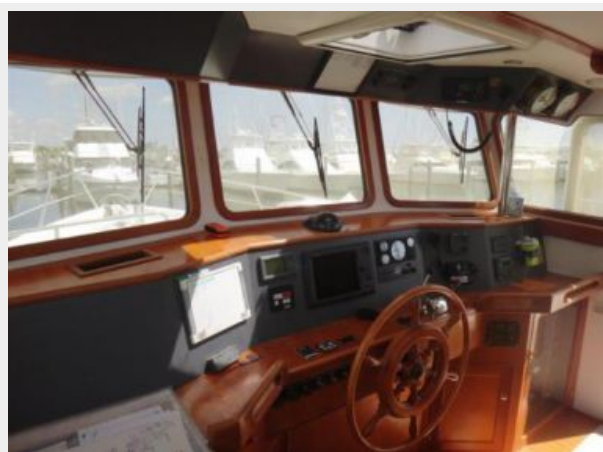
гарантировать точность этой информации, а также не ручается за техническое состояние. Покупатель должен проинструктировать своих агентов или оценщиков исследовать представленную информацию более подробно, по собственному желанию. Продажа судна или яхты, изменение цены или снятие с продажи будет происходить без предварительного уведомления.

ФОТОГРАФИИ

43' Selene Dinghy



43' Selene pilothouse



43' Selene wide watch berth



43' Selene wide watch berth



43' Selene wide watch berth



43' Selene



43' Selene electrical panel



43' Selene electrical panel



43' Selene electrical panel



43' Selene



43' Selene



43' Selene



43' Selene



43' Selene



43' Selene



43' Selene



43' Selene Bow looking Port



43' Selene



43' Selene



43' Selene



43' Selene



43' Selene



43' Selene



43' Selene



43' Selene



43' Selene



43' Selene



43' Selene



43' Selene



43' Selene pilothouse



43' Selene Big Flybridge



43' Selene Dinghy



43' Selene



43' Selene Stainless Magna Grill



43' Selene Flybridge



43' Selene Flybridge



43' Selene Hatch to the cockpit



43' Selene



43' Selene



43' Selene Flybridge



43' Selene Hatch to the Cockpit



43' Selene



43' Selene



43' Selene



43' Selene - Dinner for 6



43' Selene stairs to washer/dryer



43' Selene washer/dryer



43' Selene

43' Selene



43' Selene



43' Selene



43' Selene VIP Shower



43' Selene VIP head



43' Selene



43' Selene bedroom



43' Selene bedroom



43' Selene bedroom



43' Selene master storage



43' Selene master storage



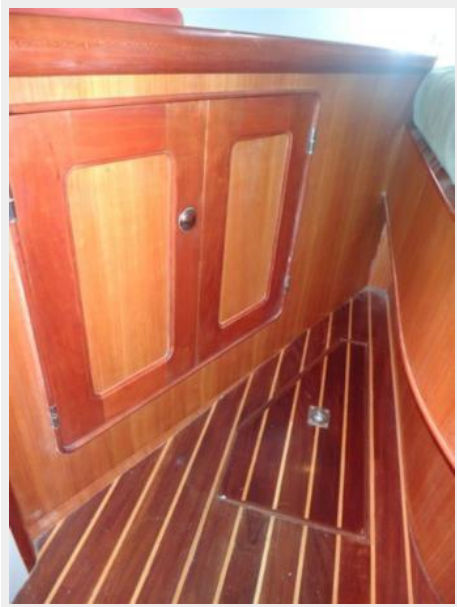
43' Selene



43' Selene



43' Selene



43' Selene



43' Selene



43' Selene Master Bath Sink



43' Selene head



43' Selene head



43' Selene engine



43' Selene



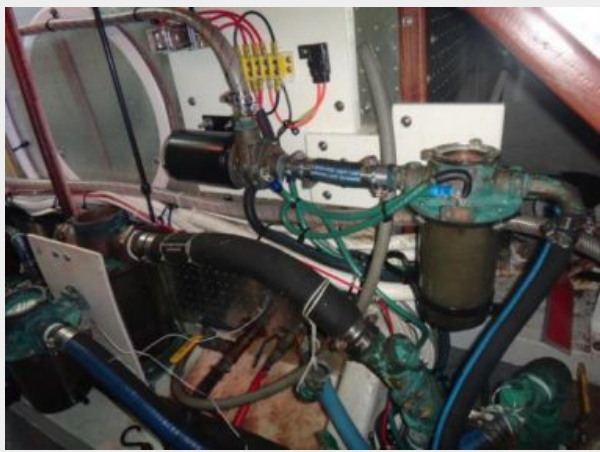
43' Selene



43' Selene



43' Selene engine



43' Selene engine



43' Selene Westerbeke Generator



43' Selene engine room



43' Selene



43' Selene profile









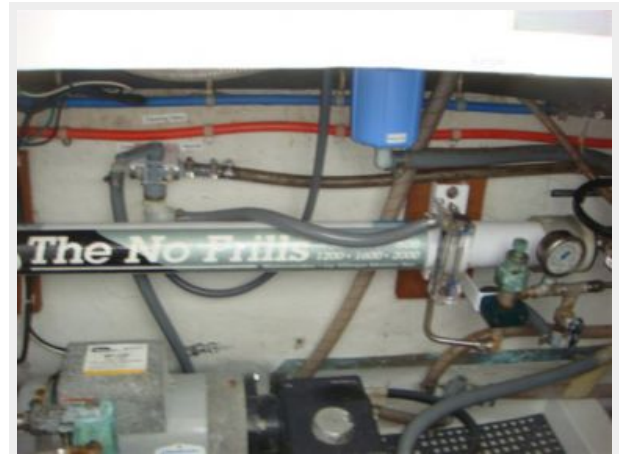












КОНТАКТЫ

Андрей Шестаков (Andrey Shestakov) – ведущий яхтенный брокер отдела продаж яхт и судов компании Shestakov Yacht Sales Inc. Официальный представитель Shestakov Yacht Sales Inc. для русскоговорящих клиентов в центральном офисе компании в Майами/Форт Лодердейл/Флорида/США.

Контактная информация

Email: andrey@shestakovyachtsales.com

Web: shestakovyachtsales.com

Телефоны

Краснодарский край: **+7(918)465-66-44**

США, Майами, Флорида: **+1(954)274-4435**

Время работы

Понедельник – Суббота: **9:00 - 21:00**
EDT

Воскресенье: **Закрито**

Адрес



Harbour Towne Marina, 850 NE 3rd St,
STE 213, Dania, FL 33004