

SUSIMI — SWEDEN YACHTS



Builder: SWEDEN YACHTS

Year Built: 1998

Model: Racing Sailboat

Price: PRICE ON APPLICATION

Location: United States

LOA: 36' 6" (11.13m)

Beam: 12' 1" (3.68m)

Max Draft: 5' 7" (1.70m)

Cruise Speed: 6 Kts. (7 MPH)

Max Speed: 7 Kts. (8 MPH)

Our experienced yacht broker, Andrey Shestakov, will help you choose and buy a yacht that best suits your needs **Susimi — SWEDEN YACHTS** from our catalogue. Presently, at Shestakov Yacht Sales Inc., we have a wide variety of yachts available on our sale's list. We also work in close contact with all the big yacht manufacturers from all over the world.

If you would like to buy a yacht **Susimi — SWEDEN YACHTS** or would like help answering any questions concerning purchasing, selling or chartering a yacht, please call **+1(954)274-4435**

TABLE OF CONTENTS

TABLE OF CONTENTS	2
SPECIFICATIONS	3
Overview	3
Basic Information	3
Dimensions	3
Speed, Capacities and Weight	4
Accommodations	4
Hull and Deck Information	4
Engine Information	4
DETAILED INFORMATION	5
Interior	5
Deck and Hull	5
Electronics	5
Sails	5
Manufacturers Description	5
Exclusions	6
Disclaimer	6
PHOTOS	8
CONTACTS	13
Contact details	13
Telephones	13
Office hours	13
Address	13

SPECIFICATIONS

Overview

Looking for a proven winner and a family yacht developed for sailing performance and comfort? Susimi has a PHRF rating of 143 and is a 2 time class winner of Charleston Race week and a 3 time class winner of Regatta Time in Abaco along with a good racing record in South Florida. She has also been used for extensive cruising in both Europe and the Americas.

This Sweden Yachts 370 benefits from a shoal draft of just 5' 7", a custom keel configuration and is perfectly set-up for twin-handed cruising. Swedish quality combined with fine lines and very good sailing capabilities. Well equipped, a rare yacht to the market and fantastically well-priced to boot!

Key Features:

16,500 BTU Mermaid A/C Fridge Engine-heated hot water Sea water/fresh water manual pump in galley 12v water system Removable cockpit table Swim ladder

Susimi has a custom bulb keel made by Mars Keels - heavier than the deep keel version.

Basic Information

Category: Racing Sailboat

Sub Category: Cruising Sailboat

Model Year: 1998

Year Built: 1998

Country: United States

Dimensions

LOA: 36' 6" (11.13m)

LWL: 29' 6" (8.99m)

Beam: 12' 1" (3.68m)

Max Draft: 5' 7" (1.70m)

Clearance: 55' 0" (16.76m)

Speed, Capacities and Weight

Cruise Speed: 6 Kts. (7 MPH)

Max Speed: 7 Kts. (8 MPH)

Displacement: 18000 Pounds

Water Capacity: 53 Gallons

Fuel Capacity: 40 Gallons

Accommodations

Total Cabins: 2

Total Berths: 6

Sleeps: 6

Total Heads: 1

Hull and Deck Information

Hull Material: Fiberglass

Engine Information

Engines: 1

Manufacturer: Volvo Penta

Model: MD 2030

Engine Type: Inboard

Fuel Type: Diesel

DETAILED INFORMATION

Interior

The interior of the Sweden Yachts 370 caters for every wish; a particularly large and light toilet cabin, two separate cabins with large double berths, most generous locker space, representative salon, well designed pantry and a nav station for pros.

Deck and Hull

Efficient and well functioning rig and deck layout - and the cockpit is a treat, whether you are sailing in rough conditions or entertaining guests in the marina. Many good ideas onboard and a never-ending attention to detail. Furlex jib furler Extra winches (2) Internal storm detachable forestay Detachable baby stay Full spinnaker equipment Spray hood Bimini Outboard bracket Anchor/chain/rode

Electronics

Raymarine Wind, Speed Depth over sliding hatch Multi GPS C95 plotter at chart table Auto pilot ST70 linear drive VHF 220 Battery charger + 220/110 Transformer

Sails

IJPE : 670.83 sq ft I : 49.83 ft J : 14.75 ft P : 46.25 ft E : 13.08 ft

Dacron 140 furling jib w/sun protection (North) Vectran main (Hood) #4 hank on jib (North) Storm hank on jib (North) #1 155 Laminate jib (UK) #2 135 Laminate jib (UK) #3 100 Laminate jib (UK) Laminate main (UK) 1/2 oz spinnaker (North) 3/4 oz spinnaker (North)

Manufacturers Description

The accommodation design of the Sweden Yachts 370 makes full use of every inch of space to create unusually airy accommodations for a boat of this size. The double fore cabin and double aft cabin provide generous space for the sailing family and leave the comfortably pleasing salon free for socializing. Moreover, when you have guests aboard the salon turns into a comfortable two berth cabin.

The L-shaped galley has a Formica counter top, 160-litre GRP refrigerated box with Plexiglas dividers and separate drainage, plenty of drawers, a cutting board, a large dry food locker, double fitted overhead cupboards, a twin burner gas cooker with oven, and ample stowage with a waste compartment beneath the double stainless steel sink unit. The large navigation table features

generous stowage, a detachable instrument panel on hinges for easy service access and out-of-season storage, a separate chart locker above the electrical master instrument panel, and a swivel navigation seat. Marine grade waterproof core with selected mahogany facing is used in all bulkheads and major joinery.

The finest solid mahogany is used for frames and doors, and all main hullsides are paneled in mahogany. The oiled cabin sole is in teak with light wood intarsia. All joinery is oil varnished until fully fiber-fed, resulting in the ultra smooth surfaces providing a true satin finish - which is the only way to guarantee the interior of your boat will grow more beautiful with the fullness of time.

Sweden Yachts: Our fast, safe sailing craft originate from the demands made by both the archipelagos with their rapidly changing winds and unpredictable seas, and the heavy weather and imposing waves not infrequently produced by the mighty North Sea.

Responding to the ocean's demands, Sweden Yachts constructs sailboats of extreme comfort that handle easily and require only minimal maintenance. The deck and hull are constructed of end-grain balsa core sandwiched between hand-laid fiberglass roving and mat to provide an extremely strong and rigid, yet light, construction. The teak decking is specially selected and hand-laid, bonded to the deck with polyurethane and secured by stainless steel screws. The hull and deck are bonded with polyester filler and the aluminum toe rail is bolted through the deck and hull flange before being sealed. The lead-antimony keel is secured with cast-in stainless steel bolts with a hoisting lug fastened to the keel bolts for convenient lifting.

The balanced spade rudder is designed for maximum reliability, accuracy, and fingertip control, and is molded in fiberglass using roving and mat for maximum strength. The rudder stock is of stainless steel with two upper roller bearings and a bronze bearing in the heel.

The quiet, smooth running Volvo Penta engines are mounted on a glass fiber bed, molded integrally with the bottom reinforcement, and filled with heavy ballast for maximum stability. The steel beam system, specially designed by Sweden Yachts, allows heavy rigging loads to be taken by the bulkheads without the need for additional internal reinforcement. In addition, the tempered glass ports have double aluminum frames.

The wiring runs through conduits above the water line, while hoses are laid through ducts placed below the floorboards. Winches and heavy deck fittings are reinforced with plywood core and heavy backing plates. The stainless steel mast step is bolted to the integrated bottom reinforcement system which absorbs and distributes forces from the mast, rigging, and keel.

Exclusions

Owner's personal belongings.

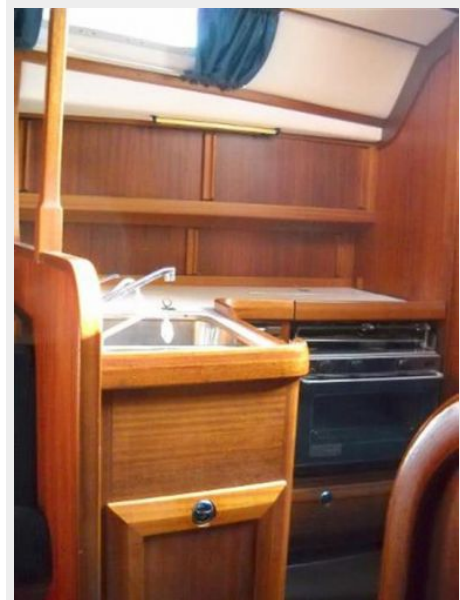
Disclaimer

The Company offers the details of this vessel or yacht in good faith but cannot guarantee or warrant the accuracy of this information nor warrant the condition of the vessel. A buyer should instruct his representatives, agents, or his surveyors, to investigate such details as the buyer desires validated. This vessel or yacht is offered subject to prior sale, price change, or withdrawal without notice.

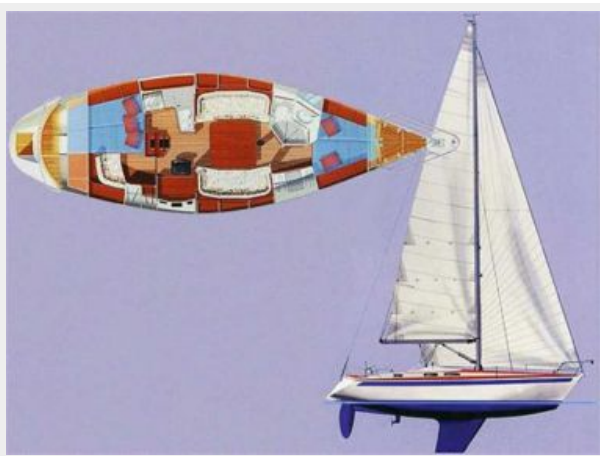
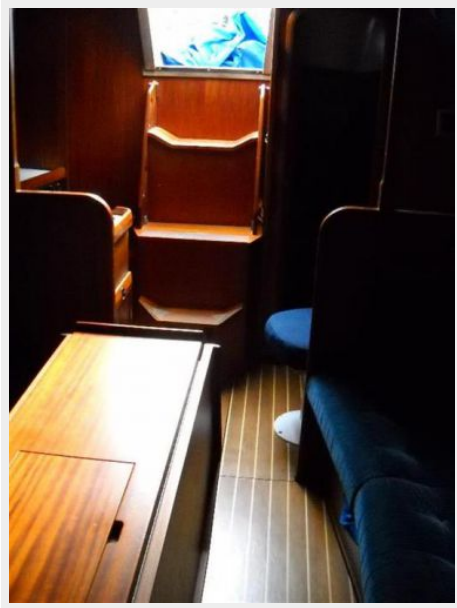
PHOTOS











CONTACTS

Andrey Shestakov, leading yacht broker of the sales department of Shestakov Yacht Sales Inc. Shestakov Yacht Sales Inc., the official representative of the Miami/Fort Lauderdale FL headquarters.

Contact details

Email: andrey@shestakovyachtsales.com

Web: shestakovyachtsales.com/en/

Telephones

USA: +1(954)274-4435

Office hours

Monday – Saturday: **9:00 - 21:00** EDT

Sunday: **closed**

Address



Harbour Towne Marina, 850 NE 3rd St,
STE 213, Dania, FL 33004