

SUSIMI — SWEDEN YACHTS



Судостроитель: SWEDEN YACHTS

Год постройки: 1998

Модель: Гоночная яхта

Цена: **ЦЕНА ЯХТЫ ПО ЗАПРОСУ**

Местонахождение: United States

Длина общая: 36' 6" (11.13m)

Ширина: 12' 1" (3.68m)

Макс. осадка: 5' 7" (1.70m)

Крейс. скорость: 6 Kts. (7 MPH)

Макс. скорость: 7 Kts. (8 MPH)

Купить **Susimi — SWEDEN YACHTS** а также выбрать подходящую вам яхту из нашего **каталога яхт** вам поможет опытный яхтенный брокер Андрей Шестаков. На сегодняшний день компания **Shestakov Yacht Sales Inc.** имеет большое количество яхт в **собственном списке продаж**, а также тесно сотрудничает со всеми крупными **яхтенными производителями** по всему миру.

Для того чтобы купить яхту **Susimi — SWEDEN YACHTS** а также проконсультироваться по любому вопросу связанному с покупкой, продажей, чартером яхт позвоните по телефону **+7(918)465-66-44**.

ОГЛАВЛЕНИЕ

ОГЛАВЛЕНИЕ	2
ХАРАКТЕРИСТИКИ	3
Обзор	3
Основная информация	3
Размеры	3
Скорость, вместимость и масса	4
Размещение	4
Корпус и палуба	4
Информация о двигателе	4
ПОДРОБНОЕ ОПИСАНИЕ	5
Interior	5
Deck and Hull	5
Electronics	5
Sails	5
Manufacturers Description	5
Исключения	6
Отказ от ответственности	6
ФОТОГРАФИИ	8
КОНТАКТЫ	13
Контактная информация	13
Телефоны	13
Время работы	13
Адрес	13

ХАРАКТЕРИСТИКИ

Обзор

Looking for a proven winner and a family yacht developed for sailing performance and comfort? Susimi has a PHRF rating of 143 and is a 2 time class winner of Charleston Race week and a 3 time class winner of Regatta Time in Abaco along with a good racing record in South Florida. She has also been used for extensive cruising in both Europe and the Americas.

This Sweden Yachts 370 benefits from a shoal draft of just 5' 7", a custom keel configuration and is perfectly set-up for twin-handed cruising. Swedish quality combined with fine lines and very good sailing capabilities. Well equipped, a rare yacht to the market and fantastically well-priced to boot!

Key Features:

16,500 BTU Mermaid A/C Fridge Engine-heated hot water Sea water/fresh water manual pump in galley 12v water system Removable cockpit table Swim ladder

Susimi has a custom bulb keel made by Mars Keels - heavier than the deep keel version.

Основная информация

Тип судна: Гоночная яхта

Подкатегория: Крейсерская яхта

Модельный год: 1998

Год постройки: 1998

Страна: United States

Размеры

Длина общая: 36' 6" (11.13m)

Длина по ватерлинии: 29' 6" (8.99m)

Ширина: 12' 1" (3.68m)

Макс. осадка: 5' 7" (1.70m)

Трапы: 55' 0" (16.76m)

Скорость, вместимость и масса

Крейс. скорость: 6 Kts. (7 MPH)

Макс. скорость: 7 Kts. (8 MPH)

Водоизмещение: 18000 Pounds

Вместимость воды: 53 Gallons

Объем топливного бака: 40 Gallons

Размещение

Всего кают: 2

Всего коек: 6

Спальные места: 6

Всего ком. состава: 1

Корпус и палуба

Материал корпуса: Fiberglass

Информация о двигателе

Двигатели: 1

Производитель: Volvo Penta

Модель: MD 2030

Тип двигателя: Inboard

Тип топлива: Diesel

ПОДРОБНОЕ ОПИСАНИЕ

Interior

The interior of the Sweden Yachts 370 caters for every wish; a particularly large and light toilet cabin, two separate cabins with large double berths, most generous locker space, representative salon, well designed pantry and a nav station for pros.

Deck and Hull

Efficient and well functioning rig and deck layout - and the cockpit is a treat, whether you are sailing in rough conditions or entertaining guests in the marina. Many good ideas onboard and a never-ending attention to detail. Furlex jib furler Extra winches (2) Internal storm detachable forestay Detachable baby stay Full spinnaker equipment Spray hood Bimini Outboard bracket Anchor/chain/rode

Electronics

Raymarine Wind, Speed Depth over sliding hatch Multi GPS C95 plotter at chart table Auto pilot ST70 linear drive VHF 220 Battery charger + 220/110 Transformer

Sails

IJPE : 670.83 sq ft I : 49.83 ft J : 14.75 ft P : 46.25 ft E : 13.08 ft

Dacron 140 furling jib w/sun protection (North) Vectran main (Hood) #4 hank on jib (North) Storm hank on jib (North) #1 155 Laminate jib (UK) #2 135 Laminate jib (UK) #3 100 Laminate jib (UK) Laminate main (UK) 1/2 oz spinnaker (North) 3/4 oz spinnaker (North)

Manufacturers Description

The accommodation design of the Sweden Yachts 370 makes full use of every inch of space to create unusually airy accommodations for a boat of this size. The double fore cabin and double aft cabin provide generous space for the sailing family and leave the comfortably pleasing salon free for socializing. Moreover, when you have guests aboard the salon turns into a comfortable two berth cabin.

The L-shaped galley has a Formica counter top, 160-litre GRP refrigerated box with Plexiglas dividers and separate drainage, plenty of drawers, a cutting board, a large dry food locker, double fitted overhead cupboards, a twin burner gas cooker with oven, and ample stowage with a waste compartment beneath the double stainless steel sink unit. The large navigation table features

generous stowage, a detachable instrument panel on hinges for easy service access and out-of-season storage, a separate chart locker above the electrical master instrument panel, and a swivel navigation seat. Marine grade waterproof core with selected mahogany facing is used in all bulkheads and major joinery.

The finest solid mahogany is used for frames and doors, and all main hullsides are paneled in mahogany. The oiled cabin sole is in teak with light wood intarsia. All joinery is oil varnished until fully fiber-fed, resulting in the ultra smooth surfaces providing a true satin finish - which is the only way to guarantee the interior of your boat will grow more beautiful with the fullness of time.

Sweden Yachts: Our fast, safe sailing craft originate from the demands made by both the archipelagos with their rapidly changing winds and unpredictable seas, and the heavy weather and imposing waves not infrequently produced by the mighty North Sea.

Responding to the ocean's demands, Sweden Yachts constructs sailboats of extreme comfort that handle easily and require only minimal maintenance. The deck and hull are constructed of end-grain balsa core sandwiched between hand-laid fiberglass roving and mat to provide an extremely strong and rigid, yet light, construction. The teak decking is specially selected and hand-laid, bonded to the deck with polyurethane and secured by stainless steel screws. The hull and deck are bonded with polyester filler and the aluminum toe rail is bolted through the deck and hull flange before being sealed. The lead-antimony keel is secured with cast-in stainless steel bolts with a hoisting lug fastened to the keel bolts for convenient lifting.

The balanced spade rudder is designed for maximum reliability, accuracy, and fingertip control, and is molded in fiberglass using roving and mat for maximum strength. The rudder stock is of stainless steel with two upper roller bearings and a bronze bearing in the heel.

The quiet, smooth running Volvo Penta engines are mounted on a glass fiber bed, molded integrally with the bottom reinforcement, and filled with heavy ballast for maximum stability. The steel beam system, specially designed by Sweden Yachts, allows heavy rigging loads to be taken by the bulkheads without the need for additional internal reinforcement. In addition, the tempered glass ports have double aluminum frames.

The wiring runs through conduits above the water line, while hoses are laid through ducts placed below the floorboards. Winches and heavy deck fittings are reinforced with plywood core and heavy backing plates. The stainless steel mast step is bolted to the integrated bottom reinforcement system which absorbs and distributes forces from the mast, rigging, and keel.

Исключения

При продаже яхты исключаются личные вещи владельца.

Отказ от ответственности

Компания предоставляет описание судна или яхты добросовестно, но не может гарантировать точность этой информации, а также не ручается за техническое состояние. Покупатель должен проинструктировать своих агентов или оценщиков исследовать представленную информацию более подробно, по собственному желанию. Продажа судна или яхты, изменение цены или снятие с продажи будет происходить без предварительного уведомления.

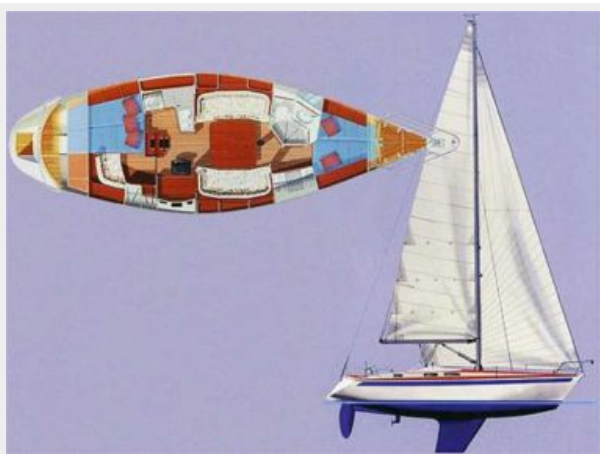
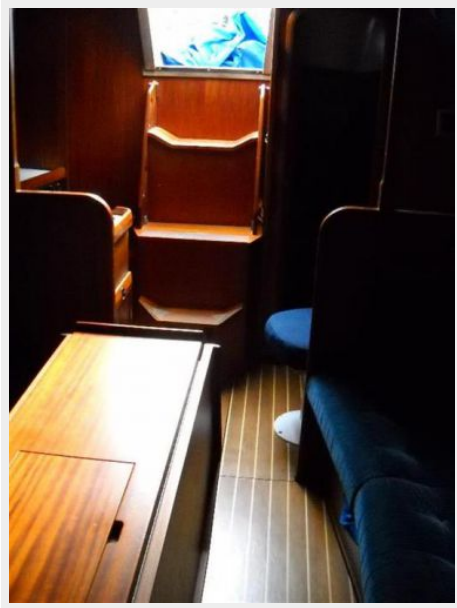
ФОТОГРАФИИ











КОНТАКТЫ

Андрей Шестаков (Andrey Shestakov) – ведущий яхтенный брокер отдела продаж яхт и судов компании Shestakov Yacht Sales Inc. Официальный представитель Shestakov Yacht Sales Inc. для русскоговорящих клиентов в центральном офисе компании в Майами/Форт Лодердейл/Флорида/США.

Контактная информация

Email: andrey@shestakovyachtsales.com

Web: shestakovyachtsales.com

Телефоны

Краснодарский край: **+7(918)465-66-44**

США, Майами, Флорида: **+1(954)274-4435**

Время работы

Понедельник – Суббота: **9:00 - 21:00**
EDT

Воскресенье: **Закрито**

Адрес



Harbour Towne Marina, 850 NE 3rd St,
STE 213, Dania, FL 33004