

## 51' 1981 SKYE 51 — SKYE



**Builder:** SKYE

**Year Built:** 1981

**Model:** Cruising Sailboat

**Price:** PRICE ON APPLICATION

**Location:** United States

**LOA:** 51' 0" (15.54m)

**Beam:** 14' 3" (4.34m)

**Max Draft:** 7' 3" (2.21m)

Our experienced yacht broker, Andrey Shestakov, will help you choose and buy a yacht that best suits your needs **51' 1981 Skye 51 — SKYE** from our catalogue. Presently, at Shestakov Yacht Sales Inc., we have a wide variety of yachts available on our sale's list. We also work in close contact with all the big yacht manufacturers from all over the world.

If you would like to buy a yacht **51' 1981 Skye 51 — SKYE** or would like help answering any questions concerning purchasing, selling or chartering a yacht, please call **+1(954)274-4435**

---

# TABLE OF CONTENTS

---

TABLE OF CONTENTS	2
SPECIFICATIONS	3
Overview	3
Basic Information	3
Dimensions	3
Speed, Capacities and Weight	3
Accommodations	3
Hull and Deck Information	4
Engine Information	4
DETAILED INFORMATION	5
General Details	5
Accommodations	5
Electronics & Navigation	5
Sails & Rigging	6
Engine & Mechanical	7
Exclusions	7
Disclaimer	8
PHOTOS	9
CONTACTS	25
Contact details	25
Telephones	25
Office hours	25
Address	25

---

# SPECIFICATIONS

---

## Overview

---

The boat was completely restored to long term cruise with the family. Owner's family increased so they needed to buy a bigger boat. Nothing was spared in the overhaul. More money has been spent in prepping the boat than the Asking Price! Much more!

Please contact Gulf Coast Broker Samson Vasquez TODAY!

228 323 1336

## Basic Information

---

**Category:** Cruising Sailboat

**Model Year:** 1981

**Year Built:** 1981

**Country:** United States

## Dimensions

---

**LOA:** 51' 0" (15.54m)

**LWL:** 42' 10" (13.06m)

**Beam:** 14' 3" (4.34m)

**Max Draft:** 7' 3" (2.21m)

**Clearance:** 73' 0" (22.25m)

## Speed, Capacities and Weight

---

**Displacement:** 40000 Pounds

**Water Capacity:** 170 Gallons

**Fuel Capacity:** 130 Gallons

## Accommodations

---

**Total Cabins:** 2

---

## Hull and Deck Information

---

**Hull Material:** Fiberglass

---

## Engine Information

---

**Engines:** 1

**Manufacturer:** Perkins

**Model:** 4-236

**Engine Type:** Inboard

**Fuel Type:** Diesel

---

# DETAILED INFORMATION

---

## General Details

---

The Skye 51 is a powerful and graceful design from the venerable team of Kaufman and Ladd and built to a very high standard by Mao-Ta with oversight by an agent of Alden Yachts, the Sky 51 is a fabulous offshore proven thoroughbred. Prili has had her layout redone to add an extra berth in the aft and larger master bed. She is owned by a very knowledgeable captain who is very skilled in electronics and mechanical. Over the past year an obscene amount of money has been spent on upgrades and repairs. **New Awlgrip paint (mast to waterline) and bottom paint 2013**

## Accommodations

---

### Master Stateroom

The bed is a between a king and queen size. The master has an ensuite with head, shower and storage. The master has ample storage for long journeys and a vanity is located to the port side between the entrance and the bed.

Moving aft is the spacious salon with a U shaped dinette and new solid mahogany table. On the port side is a couch/ lower sea berth. Above this is an upper sea berth to be either used for a berth or great for storage.

### Galley

New ENO 3 burner stove/ oven. New deep double sinks. New Sea Frost refrigeration system. Separate fridge and freezer lockers. The fridge section has top and front access. The freezer has top access.

### Aft Cabin

The aft cabin has been converted to accommodate up to 3. Port side is a double berth with shelves. Starboard is a single berth with shelves. The aft cabin also has its own head. The aft head has a utility sink large enough for laundry and has the floor drainage for a shower. Furthest aft is the engine room accessible under the cockpit seating.

### Anchor Room

Forward there is anchor locker accessible from the deck. Anchor locker also doubles as a trash compartment.

---

## Electronics & Navigation

---

## Nav Station

To the starboard side of the galley is the navigation station with aft facing chart table. Inboard of chart table is a small pantry for easy reach food access. All new electrical panel and wiring. 3000 Watt inverter and 140amp charger. New epanel bilge controls 2013. 1000 amp hour lifeline battery packs 2013

## Electronics

Skye 51 is equipped with a top-of-the-line and fully integrated electronics suite centered on Furuno NavNet 3D, Simrad instruments and autopilot, Icom communications and NEMA 0183 and NEMA 2000, all new in February 2010.

- Icom communications and NEMA 0183 and NEMA 2000
- Simrad IS20 wind instruments
- Simrad IS20 speed, depth transducers
- 3-Simrad IS20 Graphic displays
- Furuno NavNet 3D MFD12 12" display chartplotter/radar
- Furuno 24" 4KW digital radar integrated w/chartplotter
- Questus self-leveling radar mount on mizzen mast
- Furuno NavNet 3D ethernet hub
- Furuno GP-32 dedicated GPS display
- Furuno RD-30 instrument display
- Furuno FX-30 weather fax receiver, antenna at main mast masthead
- Icom M604 VHF radio, Command mic in cockpit, integrated w/GPS, masthead antenna
- Icom AIS receiver, integrated w/Furuno NavNet 3D
- Icom IC-M700Pro SSB radio
- Icom AT-130 autotuner
- Backstay insulators for SSB antenna
- Simrad AP28 autopilot, linear drive, integrated w/Furuno & NEMA buss
- Simrad AP28 wireless remote and NEMA 2000 controller
- Loud hailer, mounted below radar antenna, integrated w/Icom 604 VHF radio
- Airhorns, mounted on mizzen mast
- Wind generator
- Danforth Constellation binnacle compass

## Sails & Rigging

- **All new standing rigging – top to bottom. Stay lock fittings everywhere, new turn buckles. Every piece of standing rigging is brand new 2013!!!**
- Doyle mainsail, top 4 battens full, (3) slab reef points, lazyjacks, very good condition(new '02) inspected and repaired 2013 also replaced 2 half battens with full battens, all new cars for Tides Marine track System,
- Doyle mizzen, full batten, (2)slab reef points, good condition(new '02, recon. 2/10)

inspected and repaired 2013, Mack Pack mizzen cover(11/10)

- Doyle 135% r/f genoa w/foam luff, good condition(new '02) inspected repaired and new sun cover 2013,
- Doyle r/f staysail, very good condition(new '02)inspected, repaired and new sun cover 2013,
- Schaefer 4100 genoa furler(fully recon. 2/10)
- Schaefer 3100 staysail furler(fully recon. 2/10)
- Mizzen staysail(new '02)
- Storm trisail, very good condition(never used)
- Spare genoa, staysail, mizzen, all serviceable Mainsheet, mizzen sheet adjustable travelers
- (2) Barient 36CST 3-sp.primary winches
- (2) Barient 32CST secondary winches
- (1) Lewmar 44CST mainsheet winch
- (2) New Lewmar 44 halyard winches (2013)
- (2) Lewmar mizzen winches (2013)
- (2) Lewmar 44CST deck winches at main mast.
- Main & mizzen mast completely rewired(2/10) Deck light(s), steaming light, LED Tricolor/anchor light(2/10)
- Mast mounted whisker pole, track, uphaul/downhaul system Dutchman boom brake.

## Engine & Mechanical

---

Everything in the engine room is new: ie: wiring, hoses, fittings, filters, insulation, LED lighting. Easy access via new aluminum watertight hatches in the cockpit. Easy access all the way around the engine, separate from the cabin. Engine room is insulated with sound down insulation.

- 4-236 Perkins completely rebuilt engine. 10 hours.
- New V drive and rebuilt transmission.
- 2013 Kubota Aqua DC Genset and Water Maker. 60 gal/ hr. 3 X larger water maker membranes.
- New sea water strainer hoses, new fuel lines and filters. Racor double filtering system.
- Hot water heater
- Emergency manual bilge pump
- New fiberglass fuel tanks with stainless steel clean outs. Center tank is a “day” tank, other 3 tanks transfer to the center tank via pumps. All 4 fuel tanks are removable without tearing the boat apart. New fuel transfer pump. Tank Tender fuel gauge.

## Exclusions

---

Owner's personal belongings.

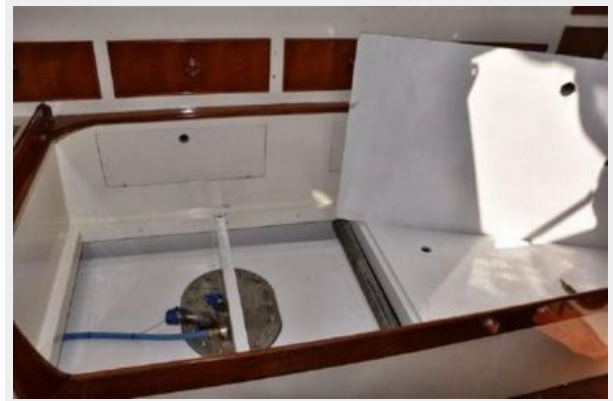
## Disclaimer

---

The Company offers the details of this vessel or yacht in good faith but cannot guarantee or warrant the accuracy of this information nor warrant the condition of the vessel. A buyer should instruct his representatives, agents, or his surveyors, to investigate such details as the buyer desires validated. This vessel or yacht is offered subject to prior sale, price change, or withdrawal without notice.



# PHOTOS



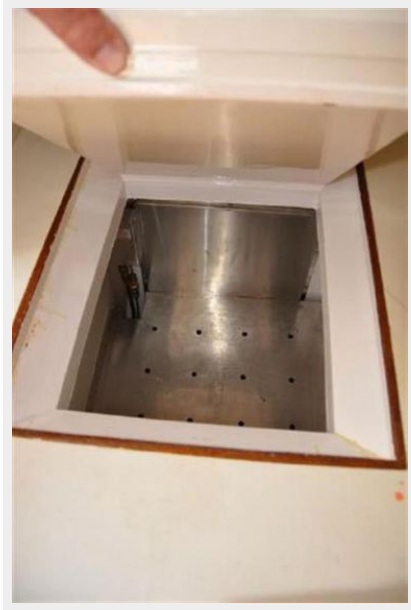


















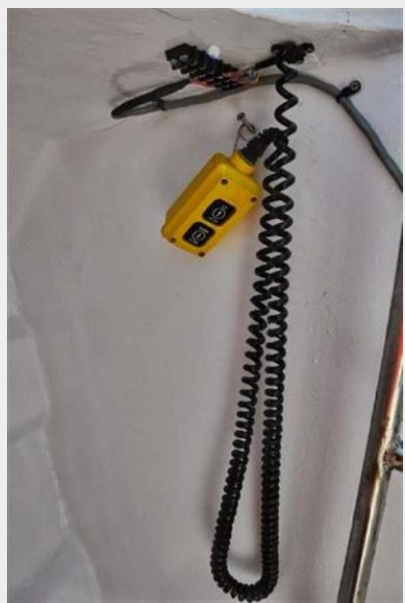
























# CONTACTS

---

Andrey Shestakov, leading yacht broker of the sales department of Shestakov Yacht Sales Inc. Shestakov Yacht Sales Inc., the official representative of the Miami/Fort Lauderdale FL headquarters.

## Contact details

---

Email: [andrey@shestakovyachtsales.com](mailto:andrey@shestakovyachtsales.com)

Web: [shestakovyachtsales.com/en/](http://shestakovyachtsales.com/en/)

## Telephones

---

USA: +1(954)274-4435

## Office hours

---

Monday – Saturday: **9:00 - 21:00** EDT

Sunday: **closed**

## Address

---



Harbour Towne Marina, 850 NE 3rd St,  
STE 213, Dania, FL 33004