

## 51' 1981 SKYE 51 — SKYE



**Судостроитель:** SKYE

**Год постройки:** 1981

**Модель:** Крейсерская яхта

**Цена:** **ЦЕНА ЯХТЫ ПО ЗАПРОСУ**

**Местонахождение:** United States

**Длина общая:** 51' 0" (15.54m)

**Ширина:** 14' 3" (4.34m)

**Макс. осадка:** 7' 3" (2.21m)

Купить 51' 1981 Skye 51 — SKYE а также выбрать подходящую вам яхту из нашего каталога яхт вам поможет опытный яхтенный брокер Андрей Шестаков. На сегодняшний день компания Shestakov Yacht Sales Inc. имеет большое количество яхт в собственном списке продаж, а также тесно сотрудничает со всеми крупными яхтенными производителями по всему миру.

Для того чтобы купить яхту 51' 1981 Skye 51 — SKYE а также проконсультироваться по любому вопросу связанному с покупкой, продажей, чартером яхт позвоните по телефону **+7(918)465-66-44**.

# ОГЛАВЛЕНИЕ

---

ОГЛАВЛЕНИЕ	2
ХАРАКТЕРИСТИКИ	3
Обзор	3
Основная информация	3
Размеры	3
Скорость, вместимость и масса	3
Размещение	3
Корпус и палуба	4
Информация о двигателе	4
ПОДРОБНОЕ ОПИСАНИЕ	5
General Details	5
Accommodations	5
Electronics & Navigation	5
Sails & Rigging	6
Engine & Mechanical	7
Исключения	7
Отказ от ответственности	8
ФОТОГРАФИИ	9
КОНТАКТЫ	25
Контактная информация	25
Телефоны	25
Время работы	25
Адрес	25

# ХАРАКТЕРИСТИКИ

## Обзор

The boat was completely restored to long term cruise with the family. Owner's family increased so they needed to buy a bigger boat. Nothing was spared in the overhaul. More money has been spent in prepping the boat than the Asking Price! Much more!

Please contact Gulf Coast Broker Samson Vasquez TODAY!

228 323 1336

## Основная информация

Тип судна: Крейсерская яхта

Модельный год: 1981

Год постройки: 1981

Страна: United States

## Размеры

Длина общая: 51' 0" (15.54m)

Длина по ватерлинии: 42' 10" (13.06m)

Ширина: 14' 3" (4.34m)

Макс. осадка: 7' 3" (2.21m)

Трапы: 73' 0" (22.25m)

## Скорость, вместимость и масса

Водоизмещение: 40000 Pounds

Вместимость воды: 170 Gallons

Объем топливного бака: 130 Gallons

## Размещение

Всего кают: 2

---

## Корпус и палуба

---

**Материал корпуса:** Fiberglass

---

## Информация о двигателе

---

**Двигатели:** 1

**Производитель:** Perkins

**Модель:** 4-236

**Тип двигателя:** Inboard

**Тип топлива:** Diesel

---

# ПОДРОБНОЕ ОПИСАНИЕ

---

## General Details

---

The Skye 51 is a powerful and graceful design from the venerable team of Kaufman and Ladd and built to a very high standard by Mao-Ta with oversight by an agent of Alden Yachts, the Sky 51 is a fabulous offshore proven thoroughbred. Prili has had her layout redone to add an extra berth in the aft and larger master bed. She is owned by a very knowledgeable captain who is very skilled in electronics and mechanical. Over the past year an obscene amount of money has been spent on upgrades and repairs. **New Awlgrip paint (mast to waterline) and bottom paint 2013**

## Accommodations

---

### Master Stateroom

The bed is a between a king and queen size. The master has an ensuite with head, shower and storage. The master has ample storage for long journeys and a vanity is located to the port side between the entrance and the bed.

Moving aft is the spacious salon with a U shaped dinette and new solid mahogany table. On the port side is a couch/ lower sea berth. Above this is an upper sea berth to be either used for a berth or great for storage.

### Galley

New ENO 3 burner stove/ oven. New deep double sinks. New Sea Frost refrigeration system. Separate fridge and freezer lockers. The fridge section has top and front access. The freezer has top access.

### Aft Cabin

The aft cabin has been converted to accommodate up to 3. Port side is a double berth with shelves. Starboard is a single berth with shelves. The aft cabin also has its own head. The aft head has a utility sink large enough for laundry and has the floor drainage for a shower. Furthest aft is the engine room accessible under the cockpit seating.

### Anchor Room

Forward there is anchor locker accessible from the deck. Anchor locker also doubles as a trash compartment.

---

## Electronics & Navigation

---

## Nav Station

To the starboard side of the galley is the navigation station with aft facing chart table. Inboard of chart table is a small pantry for easy reach food access. All new electrical panel and wiring. 3000 Watt inverter and 140amp charger. New epanel bilge controls 2013. 1000 amp hour lifeline battery packs 2013

## Electronics

Skye 51 is equipped with a top-of-the-line and fully integrated electronics suite centered on Furuno NavNet 3D, Simrad instruments and autopilot, Icom communications and NEMA 0183 and NEMA 2000, all new in February 2010.

- Icom communications and NEMA 0183 and NEMA 2000
- Simrad IS20 wind instruments
- Simrad IS20 speed, depth transducers
- 3-Simrad IS20 Graphic displays
- Furuno NavNet 3D MFD12 12" display chartplotter/radar
- Furuno 24" 4KW digital radar integrated w/chartplotter
- Questus self-leveling radar mount on mizzen mast
- Furuno NavNet 3D ethernet hub
- Furuno GP-32 dedicated GPS display
- Furuno RD-30 instrument display
- Furuno FX-30 weather fax receiver, antenna at main mast masthead
- Icom M604 VHF radio, Command mic in cockpit, integrated w/GPS, masthead antenna
- Icom AIS receiver, integrated w/Furuno NavNet 3D
- Icom IC-M700Pro SSB radio
- Icom AT-130 autotuner
- Backstay insulators for SSB antenna
- Simrad AP28 autopilot, linear drive, integrated w/Furuno & NEMA buss
- Simrad AP28 wireless remote and NEMA 2000 controller
- Loud hailer, mounted below radar antenna, integrated w/Icom 604 VHF radio
- Airhorns, mounted on mizzen mast
- Wind generator
- Danforth Constellation binnacle compass

## Sails & Rigging

- **All new standing rigging – top to bottom. Stay lock fittings everywhere, new turn buckles. Every piece of standing rigging is brand new 2013!!!**
- Doyle mainsail, top 4 battens full, (3) slab reef points, lazyjacks, very good condition(new '02) inspected and repaired 2013 also replaced 2 half battens with full battens, all new cars for Tides Marine track System,
- Doyle mizzen, full batten, (2)slab reef points, good condition(new '02, recon. 2/10)

inspected and repaired 2013, Mack Pack mizzen cover(11/10)

- Doyle 135% r/f genoa w/foam luff, good condition(new '02) inspected repaired and new sun cover 2013,
- Doyle r/f staysail, very good condition(new '02)inspected, repaired and new sun cover 2013,
- Schaefer 4100 genoa furler(fully recon. 2/10)
- Schaefer 3100 staysail furler(fully recon. 2/10)
- Mizzen staysail(new '02)
- Storm trisail, very good condition(never used)
- Spare genoa, staysail, mizzen, all serviceable Mainsheet, mizzen sheet adjustable travelers
- (2) Barient 36CST 3-sp.primary winches
- (2) Barient 32CST secondary winches
- (1) Lewmar 44CST mainsheet winch
- (2) New Lewmar 44 halyard winches (2013)
- (2) Lewmar mizzen winches (2013)
- (2) Lewmar 44CST deck winches at main mast.
- Main & mizzen mast completely rewired(2/10) Deck light(s), steaming light, LED Tricolor/anchor light(2/10)
- Mast mounted whisker pole, track, uphaul/downhaul system Dutchman boom brake.

## Engine & Mechanical

Everything in the engine room is new: ie: wiring, hoses, fittings, filters, insulation, LED lighting. Easy access via new aluminum watertight hatches in the cockpit. Easy access all the way around the engine, separate from the cabin. Engine room is insulated with sound down insulation.

- 4-236 Perkins completely rebuilt engine. 10 hours.
- New V drive and rebuilt transmission.
- 2013 Kubota Aqua DC Genset and Water Maker. 60 gal/ hr. 3 X larger water maker membranes.
- New sea water strainer hoses, new fuel lines and filters. Racor double filtering system.
- Hot water heater
- Emergency manual bilge pump
- New fiberglass fuel tanks with stainless steel clean outs. Center tank is a “day” tank, other 3 tanks transfer to the center tank via pumps. All 4 fuel tanks are removable without tearing the boat apart. New fuel transfer pump. Tank Tender fuel gauge.

## Исключения

При продаже яхты исключаются личные вещи владельца.

## Отказ от ответственности

---

Компания предоставляет описание судна или яхты добросовестно, но не может гарантировать точность этой информации, а также не ручается за техническое состояние. Покупатель должен проинструктировать своих агентов или оценщиков исследовать представленную информацию более подробно, по собственному желанию. Продажа судна или яхты, изменение цены или снятие с продажи будет происходить без предварительного уведомления.

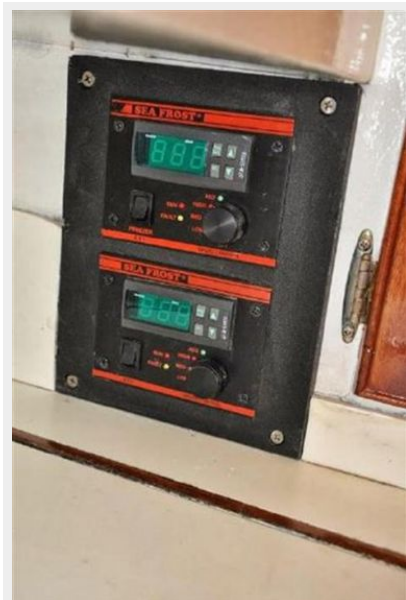


# ФОТОГРАФИИ





































# КОНТАКТЫ

---

Андрей Шестаков (Andrey Shestakov) – ведущий яхтенный брокер отдела продаж яхт и судов компании Shestakov Yacht Sales Inc. Официальный представитель Shestakov Yacht Sales Inc. для русскоговорящих клиентов в центральном офисе компании в Майами/Форт Лодердейл/Флорида/США.

## Контактная информация

---

Email: [andrey@shestakovyachtsales.com](mailto:andrey@shestakovyachtsales.com)

Web: [shestakovyachtsales.com](http://shestakovyachtsales.com)

## Телефоны

---

Краснодарский край: **+7(918)465-66-44**

США, Майами, Флорида: **+1(954)274-4435**

## Время работы

---

Понедельник – Суббота: **9:00 - 21:00**  
EDT

Воскресенье: **Закрето**

## Адрес

---



Harbour Towne Marina, 850 NE 3rd St,  
STE 213, Dania, FL 33004