

MISS MOE — SILVERTON



Builder: SILVERTON

Year Built: 2001

Model: Sport Fisherman

Price: PRICE ON APPLICATION

Location: United States

LOA: 42' 0" (12.80m)

Beam: 14' 11" (4.55m)

Max Draft: 3' 7" (1.09m)

Our experienced yacht broker, Andrey Shestakov, will help you choose and buy a yacht that best suits your needs **MISS MOE — SILVERTON** from our catalogue. Presently, at Shestakov Yacht Sales Inc., we have a wide variety of yachts available on our sale's list. We also work in close contact with all the big yacht manufacturers from all over the world.

If you would like to buy a yacht **MISS MOE — SILVERTON** or would like help answering any questions concerning purchasing, selling or chartering a yacht, please call **+1(954)274-4435**

TABLE OF CONTENTS

TABLE OF CONTENTS	2
SPECIFICATIONS	3
Overview	3
Basic Information	3
Dimensions	3
Speed, Capacities and Weight	4
Accommodations	4
Hull and Deck Information	4
Engine Information	4
DETAILED INFORMATION	5
Accommodations	5
Electronics	5
Bridge	6
Rear Deck	6
Foredeck & Side Decks	7
Engines & Electrical	7
Manufacturer Provided Description	7
Exclusions	8
Disclaimer	8
PHOTOS	9
CONTACTS	14
Contact details	14
Telephones	14
Office hours	14
Address	14

SPECIFICATIONS

Overview

MAJOR PRICE REDUCTION OF \$21500 Very well-maintained 42 foot power yacht with a dual usage for fishing and extended cruising.

Has a spacious interior and large cockpit. The twin Volvo 480 HP turbo diesels have just been serviced and bottom just painted. Interior has 2 private staterooms as well as a separate stand-up molded in shower. Fully functional galley with 2 refrigerators, glass top stove, built in microwave, abundant cabinet storage and Corian countertops. The main salon has a u-shaped dinette for 4 with a cherry table and a leather double sleep sofa. Built in cabinets of cherry wood include a concealed TV and stereo rack as well as a concealed master switch panel. The bridge has 2 captain swivel seats and extensive electronics on dash board. Forward on the bridge is an oval seating area for 6. The bridge has a full enclosure of vinyl and windows.

Office: (727) 210-1800 or direct (727) 742-8030

Please contact Jeff Ruckert at (727) 210-1800

Basic Information

Category: Sport Fisherman

Sub Category: Convertible

Model Year: 2001

Year Built: 2001

Country: United States

Dimensions

LOA: 42' 0" (12.80m)

LOD: 44' 0" (13.41m)

Beam: 14' 11" (4.55m)

Max Draft: 3' 7" (1.09m)

Clearance: 16' 8" (5.08m)

Speed, Capacities and Weight

Displacement: 24975 Pounds

Water Capacity: 200 Gallons

Holding Tank: 60 Gallons

Fuel Capacity: 524 Gallons

Accommodations

Total Cabins: 3

Total Berths: 3

Total Heads: 1

Hull and Deck Information

Hull Material: Fiberglass

Engine Information

Engines: 2

Manufacturer: Volvo

Model: Turbo Diesel TAMD 74P-A

Engine Type: Inboard

Fuel Type: Diesel

DETAILED INFORMATION

Accommodations

Full -sized double berth on centerline in forepeak.

Hanging locker cabinet to starboard and cabinet to port.

Separate A/C in owner's stateroom with control unit

private access to head and separate private shower from owner's stateroom

Full-sized berth for guests to port, with hanging locker'

Full-sized self-contained private shower to port with access from owner's stateroom and guest room.

Head has corian counters and cherry cabinets with sink. Vacu-flush head has 40 gallon holding tank.

Galley has corian counters, a built in flush sink, and finely crafted cherry cabinetry with an abundance of storage.

Built in microwave and flush, electric, glass-top stove.

Built in refrigerator and separate built-in freezer

Built-in liquor cabinet with glass holders.

Main salon has carpeting, cherry cabinetry, and plush leather upholstery on the U-shaped dinette and sleep sofa. Dinette table(for 4) solid cherry

Built-in entertainment center with TV, stereo and DVD/VHF units.

Built-in and concealed switch panel

Separate A/C with wall control

Full-sized sleep sofa of tan leather with solid cherry coffee table'

Full-standing headroom throughout interior.

Large tinted side windows with mini-blinds

Main entrance to salon a tinted, lockable, double sliding door.

Electronics

Standard Horizon Intrepid VHF radio for bridge

Jensen AM/FM single play CD stereo for bridge helm station

Raymarine model RL 80C GPS navigation plotter

Radar with a 72 mike range

New Lowrance High definition navigation/ chart plotter

Bridge

Fully enclosed and vinyl covered with zippable windows

Large storage built-in to the fore-bridge with latched vertical door

Complete vinyl cushioned seating for 6 in an oval layout in front of helm area

Entire bridge fully carpeted with snaps for ease of removal

2 swiveling helmsman (captain style) vinyl seats with height adjustments

Stainless steel Edson wheel

Switches for windless, air horn and blowers at helm

Rear Deck

Engine access door outside main salon, built in to spacious rear deck

Built-in Hot & cold water taps for cleaning deck

Portable 32 gallon live-well with saltwater plumbing

Large boarding platform with built-in concealed stainless steel boarding ladder

7 flush, built-in rod holders on rear deck rail

8 rocket launcher rod holders on rear bridge edge

Wide, molded in, steps to bridge with snap on carpet

Built-in 50 amp shore power outlet and built-in TV cable connection

40 gallon cooler under rear deck with pull up access door

Built-in hot/cold shower on solid rear rail

Built-in cabinet with cutting board, sink and 3 drawers

Foredeck & Side Decks

Bowsprit with built-in anchor guide, with Delta "fast set" anchor

Lewmar "Profish" stainless free-fall windless with remote control from bridge and 2 foredeck foot switches

4 bow pulpit fender holders

24" Bowman acrylic hatch on foredeck

Stainless life rail on entire foredeck

4 stainless cleats port and 4 starboard

2 air-horns attached to bridge front below windshield

Engines & Electrical

Two 480 HP Volvo TAMD 74P-A turbo diesels.

262 gallon aluminum fuel tanks

Michigan Dyna Quad 4-blade propellers

Kohler(model 8 EOC) 8 KW fresh water cooled marine diesel generator

50 amp shore power

Two banks of (3 group) 29-12V "wet" deep cycle batteries

Professional Mariner ProTech 4 series marine charger (aft of port engine)

Master panel in main salon, port side with main and individual breaker protection

Manufacturer Provided Description

The Silverton 42 Convertible offers incredible accommodations with luxurious appointments. A wide hardtop-crowned flybridge provides plentiful seating and storage. The command helm gives good visibility and the controls are at the captain's fingertips. The unique molded steps are great for accessing the bridge - no more ladders to bump those knees. The cockpit is tournament ready, and with the addition of the optional Fish-Pac, owners can outfit the 42 to the gunnels. The split head and shower arrangement make cleaning up easy.

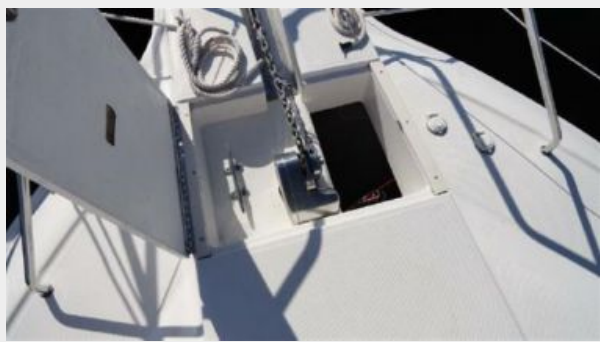
Exclusions

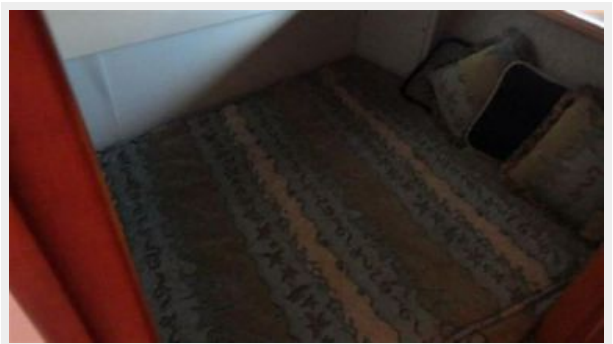
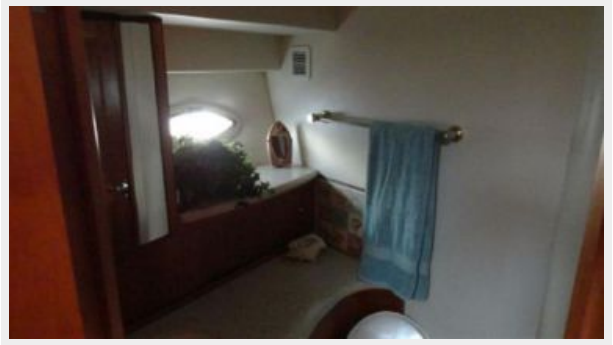
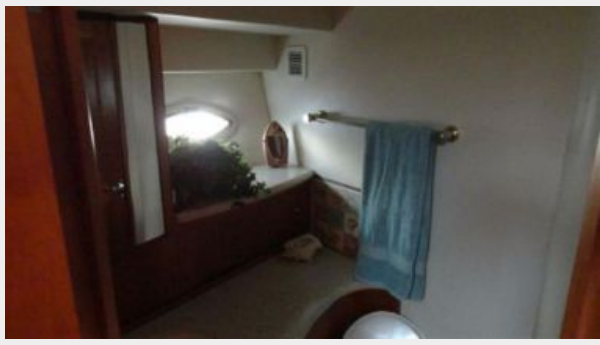
Owner's personal belongings.

Disclaimer

The Company offers the details of this vessel or yacht in good faith but cannot guarantee or warrant the accuracy of this information nor warrant the condition of the vessel. A buyer should instruct his representatives, agents, or his surveyors, to investigate such details as the buyer desires validated. This vessel or yacht is offered subject to prior sale, price change, or withdrawal without notice.

PHOTOS











CONTACTS

Andrey Shestakov, leading yacht broker of the sales department of Shestakov Yacht Sales Inc. Shestakov Yacht Sales Inc., the official representative of the Miami/Fort Lauderdale FL headquarters.

Contact details

Email: andrey@shestakovyachtsales.com

Web: shestakovyachtsales.com/en/

Telephones

USA: +1(954)274-4435

Office hours

Monday – Saturday: **9:00 - 21:00** EDT

Sunday: **closed**

Address



Harbour Towne Marina, 850 NE 3rd St,
STE 213, Dania, FL 33004