

## MISS MOE — SILVERTON



**Судостроитель:** SILVERTON

**Год постройки:** 2001

**Модель:** Катер для спортивной рыбалки

**Цена:** ЦЕНА ЯХТЫ ПО ЗАПРОСУ

**Местонахождение:** United States

**Длина общая:** 42' 0" (12.80m)

**Ширина:** 14' 11" (4.55m)

**Макс. осадка:** 3' 7" (1.09m)

Купить **MISS MOE — SILVERTON** а также выбрать подходящую вам яхту из нашего каталога яхт вам поможет опытный яхтенный брокер Андрей Шестаков. На сегодняшний день компания **Shestakov Yacht Sales Inc.** имеет большое количество яхт в собственном списке продаж, а также тесно сотрудничает со всеми крупными яхтенными производителями по всему миру.

Для того чтобы купить яхту **MISS MOE — SILVERTON** а также проконсультироваться по любому вопросу связанному с покупкой, продажей, чартером яхт позвоните по телефону **+7(918)465-66-44**.

# ОГЛАВЛЕНИЕ

---

ОГЛАВЛЕНИЕ	2
ХАРАКТЕРИСТИКИ	3
Обзор	3
Основная информация	3
Размеры	3
Скорость, вместимость и масса	4
Размещение	4
Корпус и палуба	4
Информация о двигателе	4
ПОДРОБНОЕ ОПИСАНИЕ	5
Accommodations	5
Electronics	5
Bridge	6
Rear Deck	6
Foredeck & Side Decks	7
Engines & Electrical	7
Manufacturer Provided Description	7
Исключения	8
Отказ от ответственности	8
ФОТОГРАФИИ	9
КОНТАКТЫ	14
Контактная информация	14
Телефоны	14
Время работы	14
Адрес	14

# ХАРАКТЕРИСТИКИ

## Обзор

MAJOR PRICE REDUCTION OF \$21500 Very well-maintained 42 foot power yacht with a dual usage for fishing and extended cruising.

Has a spacious interior and large cockpit. The twin Volvo 480 HP turbo diesels have just been serviced and bottom just painted. Interior has 2 private staterooms as well as a separate stand-up molded in shower. Fully functional galley with 2 refrigerators, glass top stove, built in microwave, abundant cabinet storage and Corian countertops. The main salon has a u-shaped dinette for 4 with a cherry table and a leather double sleep sofa. Built in cabinets of cherry wood include a concealed TV and stereo rack as well as a concealed master switch panel. The bridge has 2 captain swivel seats and extensive electronics on dash board. Forward on the bridge is an oval seating area for 6. The bridge has a full enclosure of vinyl and windows.

Office: (727) 210-1800 or direct (727) 742-8030

Please contact Jeff Ruckert at (727) 210-1800

## Основная информация

**Тип судна:** Катер для спортивной рыбалки

**Подкатегория:** Convertible

**Модельный год:** 2001

**Год постройки:** 2001

**Страна:** United States

## Размеры

**Длина общая:** 42' 0" (12.80m)

**Длина палубы:** 44' 0" (13.41m)

**Ширина:** 14' 11" (4.55m)

**Макс. осадка:** 3' 7" (1.09m)

**Трапы:** 16' 8" (5.08m)

## Скорость, вместимость и масса

---

**Водоизмещение:** 24975 Pounds

**Вместимость воды:** 200 Gallons

**Вместимость сточного бака:** 60 Gallons

**Объем топливного бака:** 524 Gallons

## Размещение

---

**Всего кают:** 3

**Всего коек:** 3

**Всего ком. состава:** 1

## Корпус и палуба

---

**Материал корпуса:** Fiberglass

## Информация о двигателе

---

**Двигатели:** 2

**Производитель:** Volvo

**Модель:** Turbo Diesel TAMD 74P-A

**Тип двигателя:** Inboard

**Тип топлива:** Diesel

---

# ПОДРОБНОЕ ОПИСАНИЕ

---

## Accommodations

---

Full -sized double berth on centerline in forepeak.

Hanging locker cabinet to starboard and cabinet to port.

Separate A/C in owner's stateroom with control unit

private access to head and separate private shower from owner's stateroom

Full-sized berth for guests to port, with hanging locker'

Full-sized self-contained private shower to port with access from owner's stateroom and guest room.

Head has corian counters and cherry cabinets with sink. Vacu-flush head has 40 gallon holding tank.

Galley has corian counters, a built in flush sink, and finely crafted cherry cabinetry with an abundance of storage.

Built in microwave and flush, electric, glass-top stove.

Built in refrigerator and separate built-in freezer

Built-in liquor cabinet with glass holders.

Main salon has carpeting, cherry cabinetry, and plush leather upholstery on the U-shaped dinette and sleep sofa. Dinette table(for 4) solid cherry

Built-in entertainment center with TV, stereo and DVD/VHF units.

Built-in and concealed switch panel

Separate A/C with wall control

Full-sized sleep sofa of tan leather with solid cherry coffee table'

Full-standing headroom throughout interior.

Large tinted side windows with mini-blinds

Main entrance to salon a tinted, lockable, double sliding door.

---

## Electronics

---

Standard Horizon Intrepid VHF radio for bridge

Jensen AM/FM single play CD stereo for bridge helm station

Raymarine model RL 80C GPS navigation plotter

Radar with a 72 mike range

New Lowrance High definition navigation/ chart plotter

## Bridge

---

Fully enclosed and vinyl covered with zippable windows

Large storage built-in to the fore-bridge with latched vertical door

Complete vinyl cushioned seating for 6 in an oval layout in front of helm area

Entire bridge fully carpeted with snaps for ease of removal

2 swiveling helmsman (captain style) vinyl seats with height adjustments

Stainless steel Edson wheel

Switches for windless, air horn and blowers at helm

## Rear Deck

---

Engine access door outside main salon, built in to spacious rear deck

Built-in Hot & cold water taps for cleaning deck

Portable 32 gallon live-well with saltwater plumbing

Large boarding platform with built-in concealed stainless steel boarding ladder

7 flush, built-in rod holders on rear deck rail

8 rocket launcher rod holders on rear bridge edge

Wide, molded in, steps to bridge with snap on carpet

Built-in 50 amp shore power outlet and built-in TV cable connection

40 gallon cooler under rear deck with pull up access door

Built-in hot/cold shower on solid rear rail

Built-in cabinet with cutting board, sink and 3 drawers

---

## Foredeck & Side Decks

---

Bowsprit with built-in anchor guide, with Delta "fast set" anchor

Lewmar "Profish" stainless free-fall windless with remote control from bridge and 2 foredeck foot switches

4 bow pulpit fender holders

24" Bowman acrylic hatch on foredeck

Stainless life rail on entire foredeck

4 stainless cleats port and 4 starboard

2 air-horns attached to bridge front below windshield

---

## Engines & Electrical

---

Two 480 HP Volvo TAMD 74P-A turbo diesels.

262 gallon aluminum fuel tanks

Michigan Dyna Quad 4-blade propellers

Kohler( model 8 EOC) 8 KW fresh water cooled marine diesel generator

50 amp shore power

Two banks of (3 group) 29-12V "wet" deep cycle batteries

Professional Mariner ProTech 4 series marine charger (aft of port engine)

Master panel in main salon, port side with main and individual breaker protection

---

## Manufacturer Provided Description

---

The Silverton 42 Convertible offers incredible accommodations with luxurious appointments. A wide hardtop-crowned flybridge provides plentiful seating and storage. The command helm gives good visibility and the controls are at the captain's fingertips. The unique molded steps are great for accessing the bridge - no more ladders to bump those knees. The cockpit is tournament ready, and with the addition of the optional Fish-Pac, owners can outfit the 42 to the gunnels. The split head and shower arrangement make cleaning up easy.

---

## Исключения

---

При продаже яхты исключаются личные вещи владельца.

---

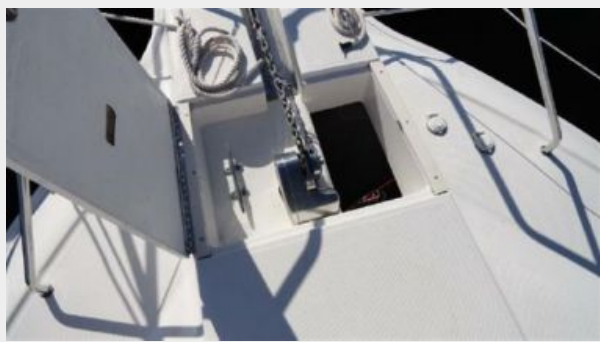
## Отказ от ответственности

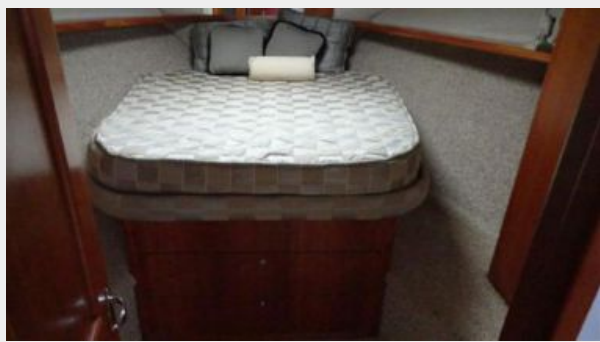
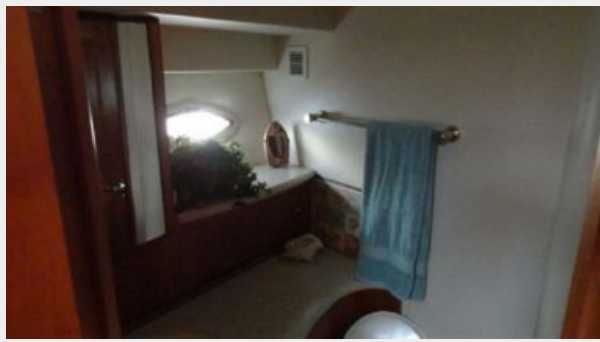
---

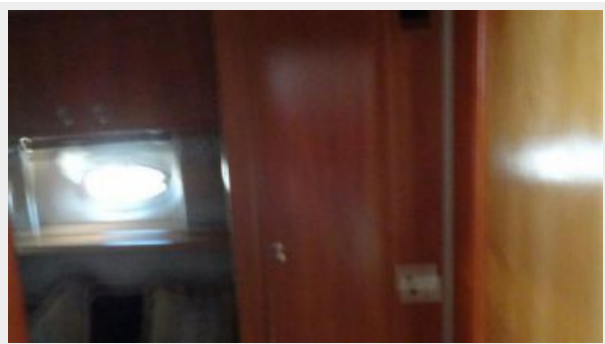
Компания предоставляет описание судна или яхты добросовестно, но не может гарантировать точность этой информации, а также не ручается за техническое состояние. Покупатель должен проинструктировать своих агентов или оценщиков исследовать представленную информацию более подробно, по собственному желанию. Продажа судна или яхты, изменение цены или снятие с продажи будет происходить без предварительного уведомления.



# ФОТОГРАФИИ













# КОНТАКТЫ

---

Андрей Шестаков (Andrey Shestakov) – ведущий яхтенный брокер отдела продаж яхт и судов компании Shestakov Yacht Sales Inc. Официальный представитель Shestakov Yacht Sales Inc. для русскоговорящих клиентов в центральном офисе компании в Майами/Форт Лодердейл/Флорида/США.

## Контактная информация

---

Email: [andrey@shestakovyachtsales.com](mailto:andrey@shestakovyachtsales.com)

Web: [shestakovyachtsales.com](http://shestakovyachtsales.com)

## Телефоны

---

Краснодарский край: **+7(918)465-66-44**

США, Майами, Флорида: **+1(954)274-4435**

## Время работы

---

Понедельник – Суббота: **9:00 - 21:00**  
EDT

Воскресенье: **Закрито**

## Адрес

---



Harbour Towne Marina, 850 NE 3rd St,  
STE 213, Dania, FL 33004