

LIZARD OF OZ — SEAWIND CATAMARANS



Судостроитель:
SEAWIND CATAMARANS

Год постройки: 2007

Модель: Катамаран

Цена: ЦЕНА ЯХТЫ ПО ЗАПРОСУ

Местонахождение: China

Длина общая: 38' 0" (11.58m)

Ширина: 21' 4" (6.50m)

Макс. осадка: 3' 7" (1.09m)

Купить Lizard of Oz — SEAWIND CATAMARANS а также выбрать подходящую вам яхту из нашего каталога яхт вам поможет опытный яхтенный брокер Андрей Шестаков. На сегодняшний день компания Shestakov Yacht Sales Inc. имеет большое количество яхт в собственном списке продаж, а также тесно сотрудничает со всеми крупными яхтенными производителями по всему миру. Для того чтобы купить яхту Lizard of Oz — SEAWIND CATAMARANS а также проконсультироваться по любому вопросу связанному с покупкой, продажей, чартером яхт позвоните по телефону **+7(918)465-66-44**.

ОГЛАВЛЕНИЕ

ОГЛАВЛЕНИЕ	2
ХАРАКТЕРИСТИКИ	4
Основная информация	4
Размеры	4
Скорость, вместимость и масса	4
Размещение	4
Корпус и палуба	4
Информация о двигателе	5
ПОДРОБНОЕ ОПИСАНИЕ	6
Yacht Introduction & Description	6
Build & Hull Finish Information	6
Accommodations	6
Deck Equipment	6
Sails & Rigging	7
Cockpit	7
Galley	7
Salon	7
Electrical Equipment & Engines	7
Navigation Equipment	8
Extra Features & Upgrades	8
Исключения	8
Отказ от ответственности	8
ФОТОГРАФИИ	9
КОНТАКТЫ	17
Контактная информация	17
Телефоны	17
Время работы	17
Адрес	17

ХАРАКТЕРИСТИКИ

Основная информация

Тип судна: Катамаран

Модельный год: 2007

Год постройки: 2007

Страна: China

Размеры

Длина общая: 38' 0" (11.58m)

Длина по ватерлинии: 37' 0" (11.28m)

Ширина: 21' 4" (6.50m)

Макс. осадка: 3' 7" (1.09m)

Скорость, вместимость и масса

Водоизмещение: 15400 Pounds

Вместимость воды: 198.129039 Gallons

Вместимость сточного бака:
63.40129248 Gallons

Объем топливного бака: 95.10193872
Gallons

Размещение

Всего кают: 3

Всего коек: 4

Спальные места: 8

Всего ком. состава: 2

Корпус и палуба

Материал корпуса: GRP

Комплектация корпуса: Катамаран

Цвет корпуса: White

Информация о двигателе

Двигатели: 2

Производитель: Yanmar

Тип двигателя: Inboard

Тип топлива: Diesel

ПОДРОБНОЕ ОПИСАНИЕ

Yacht Introduction & Description

Seawind Catamarans, Australia's largest manufacturer of cruising catamarans, offer a superior range of cruising catamarans built to enjoy the world's oceans, coastlines and harbours and this Seawind 1160 model is no exception. The Seawind 1160 creatively blends key concepts of other popular Seawind models to create a design that successfully combines the huge living space and all round visibility of their previous models, with the sleeping accommodation, luxurious fitout taken into consideration as very important focus points. Thanks to the innovative trifolding door system that converts the separate saloon and cockpit separated by a door, into a huge living and entertaining space with the doors folding and stowing away into the targa above, this catamaran can be comfortably sailed in all weather conditions protecting the sailors indoors and out. This SW1160, owned by two experienced owners, is in very good condition with a full time professional crew caring for all the maintenance and servicing. Fitted with custom extra Fisher Panda genset and reverse-cycle air conditioning this model is suitable for hot and cold climates alike. This particular catamaran is a popular and well known sight sailing around Hong Kong's local waters.

Build & Hull Finish Information

The overall finish of the Seawind 1160 is consistent with that of a luxury world-standard yacht of this size and type. Only very high quality equipment is used throughout the production process. Exterior/Laminate: Hull finish: Full female moulded hulls and decks, exterior gelcoat finish with moulded-in non-slip surface on deck areas. Hull laminate: Vinyl Ester (modified epoxy) resin laminate of the hulls between the gelcoat and the foam core. Polyester resin elsewhere. Laminate specifications are to Australian and International Survey standards.

Accommodations

1 x master double ensuite - queen size bed 1 x guest double - queen size bed 1 x guest double - standard double Convertible salon sofa to double bed Custom added child bunk forward cabin port (removable) Large day head with shower

Deck Equipment

Aluminium hatches and portholes Fiberglass deck hatches Forward anchor and deck storage hatches Cockpit storage hatches Docking cleats Mast base turning blocks Rope clutches Sheet winches: 2 x Harken 46St (one upgraded to electric), 2 x Harken 40ST - 2 speed self tail Electric anchor winch with chain and gypsy. Anchor is stored in a specially designed anchor roller under the forward beam Anchor winch has foot switch at the winch plus a remote up/down control at the

helm station Anchor, chain and rope Anchor bridle Aft swim ladder Cockpit targa cushions Forward window UV sun covers Transom shower - hot and cold Dinghy davits Dinghy outboard brackets Tender with Mercury 3.3hp outboard

Sails & Rigging

Clear anodized aluminium mast and boom. Single spreader 7/8rig 2 x mainsail single line reefing fitted All halyards, reefing lines lead back to cockpit through turning blocks and Spinlock rope clutches Fully battened mainsail Self tacking jib Genoa Code Zero Bowsprit MPS & MPS deck fittings kit Mainsail cover with integrated lazy jack systems Profurl headsail furler. Curved headsail traveler track with end stops.

Cockpit

Twin helm stations - 2x 32" stainless steel steering wheels Both wheels independently linked to steering Helm seats storage under Southern BBQ - Stainless steel gas with half grill upgrade

Galley

Spacious galley with co-ordinated Polystone counter surfaces and timber accents 3 burner LPG Stove and oven. Flame failure device to shut off LPG immediately in event of flame going out Double stainless steel sink Pressurised hot and cold water system Front opening upright 'Vitrifrigo' fridge - 130l Large 60l top loading 'Iceer' freezer - heavily insulated Microwave

Salon

Ornate polished dining table, lowers to create coffee table or converts to double bed Cocktail cabinet with ornate polished hinging lid Forward opening windows in 10mm toughened glass in marine anodized aluminium frame Simulated teak and holly flooring Salon/cockpit doors - moulded gel trifold doors. Complete with folding mechanism for folding into Targa walkway.

Electrical Equipment & Engines

Twin Yanmar 30hp sail drive diesel engines. Fresh water cooling, rubber isolation mounts on reinforced fibreglass bed with integral oil drip pan. Engine hours 531 and 524 hours each Propeller 3 blade Gori folding upgrade Generator 4.5kva Panda - 183 hours Generator acoustic insulation Dual engine controls at port helm station. Remote electric key start at engine controls Console mounted engine instruments Batteries x 3 comprising: House System is 600 Amp/hr (3 x 200) batts. 1 x engine cranking battery Battery charger/inverter Victron 2000 (240V/50Hz) Battery Monitor BEP in switch panel Shorepower with 2 Double - 240 V GPO outlets inc Galvonic Blocker 2 x Bilge Pumps (with Off/Auto/On)

Navigation Equipment

Raymarine ST60 Tridata (Speed Depth Log) VHF Radio Raymarine display & GPS Raymarine ST60 Wind Raymarine Autopilot Twin steering compasses Raymarine Wireless Autohelm handheld remote control - custom added by owner (see photo)

Extra Features & Upgrades

Majestic LCD TV with stereo and DVD player Sonos sound system and custom built boom box for deck music (see photo) WIFI Air conditioning Saloon & Main cabins. Cruisair 19,000BTU - reverse cycle hot/cold Electric toilet Johnson XL upgrades - Toilets (have a freshwater/saltwater Switch over option) Solar panels 125Wx2

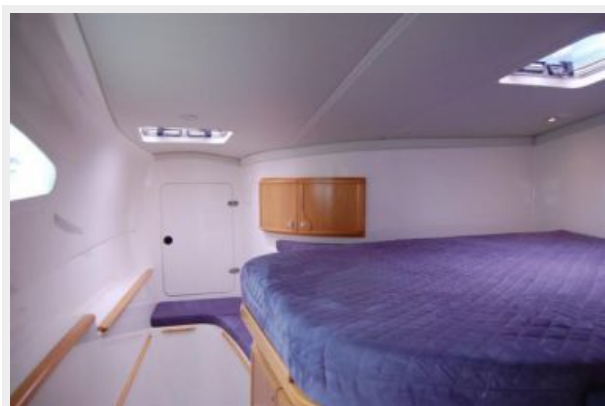
Исключения

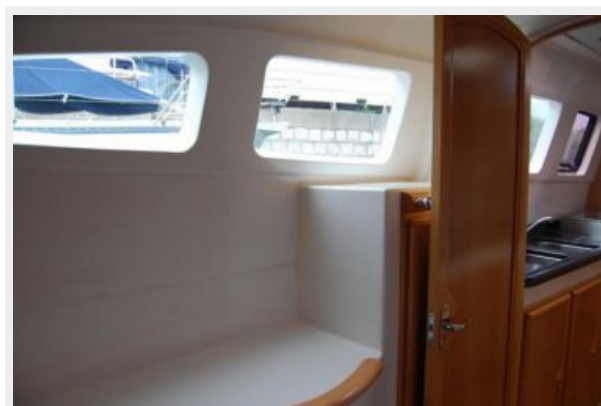
При продаже яхты исключаются личные вещи владельца.

Отказ от ответственности

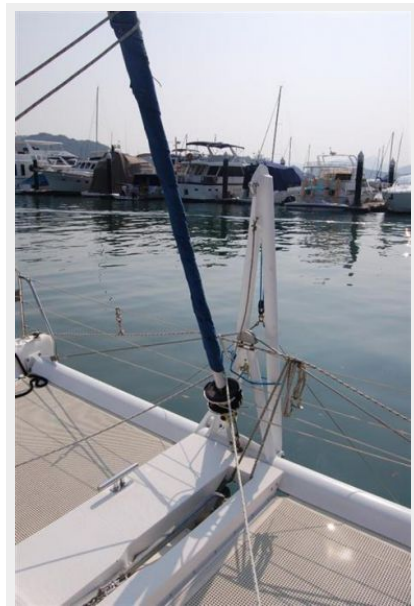
Компания предоставляет описание судна или яхты добросовестно, но не может гарантировать точность этой информации, а также не ручается за техническое состояние. Покупатель должен проинструктировать своих агентов или оценщиков исследовать представленную информацию более подробно, по собственному желанию. Продажа судна или яхты, изменение цены или снятие с продажи будет происходить без предварительного уведомления.

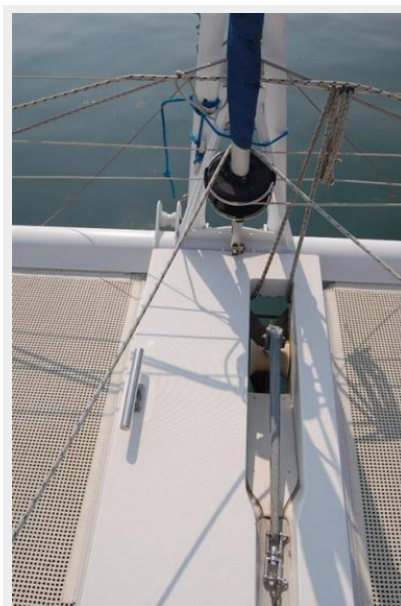
ФОТОГРАФИИ

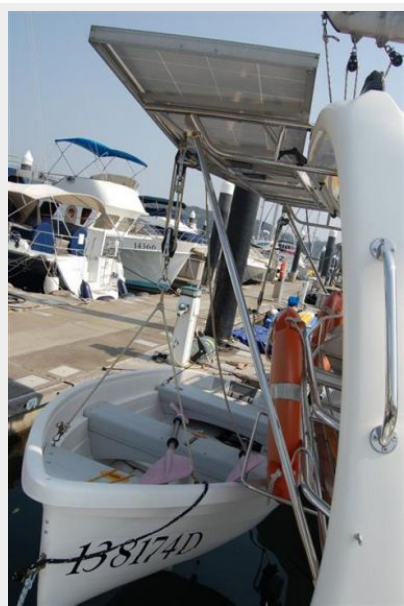
















КОНТАКТЫ

Андрей Шестаков (Andrey Shestakov) – ведущий яхтенный брокер отдела продаж яхт и судов компании Shestakov Yacht Sales Inc. Официальный представитель Shestakov Yacht Sales Inc. для русскоговорящих клиентов в центральном офисе компании в Майами/Форт Лодердейл/Флорида/США.

Контактная информация

Email: andrey@shestakovyachtsales.com

Web: shestakovyachtsales.com

Телефоны

Краснодарский край: **+7(918)465-66-44**

США, Майами, Флорида: **+1(954)274-4435**

Время работы

Понедельник – Суббота: **9:00 - 21:00**
EDT

Воскресенье: **Закрыто**

Адрес



Harbour Towne Marina, 850 NE 3rd St,
STE 213, Dania, FL 33004