

SNOW GOOSE — AQUA STAR



Builder: AQUA STAR

Year Built: 1989

Model: Motor Yacht

Price: PRICE ON APPLICATION

Location: United Kingdom

LOA: 33' 0" (10.06m)

Beam: 11' 7" (3.53m)

Min Draft: 3' 3" (0.99m)

Cruise Speed: 14 Kts. (16 MPH)

Max Speed: 19 Kts. (22 MPH)

Our experienced yacht broker, Andrey Shestakov, will help you choose and buy a yacht that best suits your needs **SNOW GOOSE — AQUA STAR** from our catalogue. Presently, at Shestakov Yacht Sales Inc., we have a wide variety of yachts available on our sale's list. We also work in close contact with all the big yacht manufacturers from all over the world.

If you would like to buy a yacht **SNOW GOOSE — AQUA STAR** or would like help answering any questions concerning purchasing, selling or chartering a yacht, please call **+1(954)274-4435**

TABLE OF CONTENTS

TABLE OF CONTENTS	2
SPECIFICATIONS	4
Overview	4
Basic Information	4
Dimensions	4
Speed, Capacities and Weight	4
Accommodations	4
Hull and Deck Information	5
Engine Information	5
DETAILED INFORMATION	6
Broker's Comments	6
Owner's Comments	6
Construction	6
Machinery	7
Electrical Systems	7
Plumbing Systems	8
Tankage	8
Navigation Equipment	8
Domestic Equipment	9
Accommodation	10
Deck Equipment	10
Exclusions	11
Disclaimer	11
PHOTOS	12
CONTACTS	17
Contact details	17
Telephones	17
Office hours	17

Address

17

SPECIFICATIONS

Overview

Good example of the Aqua-Star 33 Aft Cockpit. This 33 has updated nav. equipment and has been kept up to speed with fresh batteries, heater and engine servicing.

Basic Information

Category: Motor Yacht

Model Year: 1989

Year Built: 1989

Country: United Kingdom

Dimensions

LOA: 33' 0" (10.06m)

Beam: 11' 7" (3.53m)

Min Draft: 3' 3" (0.99m)

Speed, Capacities and Weight

Cruise Speed: 14 Kts. (16 MPH)

Max Speed: 19 Kts. (22 MPH)

Displacement: 16799.2243644 Pounds

Water Capacity: 26.4172052 Gallons

Fuel Capacity: 211.3376416 Gallons

Accommodations

Total Cabins: 2

Total Berths: 4

Total Heads: 1

Hull and Deck Information

Hull Material: GRP

Deck Material: GRP

Hull Configuration: Semi-Displacement

Hull Designer: Geoff Wilson

Engine Information

Engines: 2

Manufacturer: Thornycroft

Model: T358

Engine Type: Inboard

Fuel Type: Diesel

DETAILED INFORMATION

Broker's Comments

Built of strong stuff in Guernsey, these semi-displacement hulls are a preferred choice for those looking for comfortable offshore cruising from a pedigree boat-builder who also supply commercially. This 33 has updated navigational equipment including HD radar, a recent plotter and has been kept up to speed with fresh batteries, heater and engine servicing. There is vast storage volume in a full-beam aft lazarette and in under-floor lockers forward of the engines, and she is being sold with a full inventory to include davits, liferaft, dinghy and outboard.

Owner's Comments

SNOW GOOSE is a wonderful, go-anywhere, anytime yacht which has looked after me on the water over the last six years. Together we have been across the Channel, to the West Country and just about everywhere in the Solent. She has never let me down. She has been based at Berthon Lymington Marina since 2010 where she has been looked after and upgraded by Berthon's maintenance team. Personal circumstances mean that I am taking a break from boating, otherwise she would NOT be for sale.

Construction

Overall Measured Length: 33' incl. 1'2" anchor and BR. Beam 11'2".

RCD Status: Our understanding is that the yacht is exempt from the essential safety requirements of Directive 94/25EC (Recreational Craft Directive) as she was built and placed into use within the EU prior to 1998.

Hull, Deck & Superstructure Construction:

- White GRP hull with blue topsides stripe.
- GRP decks with grey non-slip painted pads, white superstructure with blue band.
- Teak laid cockpit and aft cockpit locker lids.
- Black rubberized D-section fendering around hull.

Machinery

Engine & Gearboxes:

- 2 x Thornycroft T358 210hp diesel engines (1989).
- PRM 402 1.5:1 reduction gearbox.

Maintenance & Performance:

- Engine Hours: c. 1012/1070 as of 17-12-13.
- Cruising Speed: 14 knots.
- Maximum Speed: 19 knots.
- Engine Overhauled/Service: September 2012.

Propulsion & Steering:

- Chromed Morse single lever gear/throttle controls.
- Hydraulic steering system.

Electrical Systems

Voltage Systems:

- 12V

Battery Banks:

- 2 x Engine batteries; 140ah, rated at 12v.
- 2 x Varta LFD140 domestic batteries; 140ah, rated at 12v (September 2012).

Battery Chargers:

- Sterling Pro Charger (12v/30A) multi-step charger.

Alternators:

- 2 x Engine alternators.

Shore Power:

- Shore power system.

Plumbing Systems

Fresh Water & Water Heating System:

- Electric pressurized fresh water system.
- Hot water heater and engine calorifier.

Bilge Pumps:

- 2 x Bilge pumps.
- 1 x manual Whale pump in aft cockpit locker.

Tankage

Fuel:

- Total fuel capacity of 800 litres.

Fresh water:

- Total fresh water capacity of 100 litres.

Navigation Equipment

- Garmin 3010 C colour plotter/radar.
- Garmin HD radar scanner (2013).
- Garmin GPS 126.

- B&G Network quad-speed/depth.
- B&G Network pilot.
- Clipper digital navtex.
- Raymarine Ray54E DSC VHF.
- Plastimo offshore 105 steering compass.
- KVH/Azimuth 1000 digital compass.
- Icom IC-M33 handheld VHF.

Domestic Equipment

Galley:

- 4-burner stainless steel gas hob, plus Spinflo Cara gas oven.
- Indel B 12v refrigerator.
- Stainless steel sink and hot and cold mixer tap.
- Cutlery and crockery.

Heads/Showers:

- Jabsco manual WC.
- 1 x Shower head on umbilical from sink.
- 1 x Shaver electric socket in heads compartment.

Heating & Ventilation:

- Webasto diesel heating system (serviced 2012).
- Screen demisters.

Entertainment:

- Panasonic radio cassette entertainment system.

- JVC flat screen television to forward cabin (screen is scratched).

Accommodation

Summary of Accommodation:

- 2 x single berths and 1 x double berth in 2 cabins. (singles are in bunk format)
- Interior finished in teak.
- Blue carpets, plus blue diamond patterned velour cloth upholstery.

Description of layout:

L-shaped saloon seating with table to port, galley with stowage beneath to starboard. Single navigator's seat and chart table area forward, with two seater helm bench to console, and opening hatch to roof. Stowage underneath forward floor sections, engine access under mid-aft hatches. Double cabin with centerline berth forward, deck hatch and fixed side portlights. Overhead fluorescent lighting and two cabin reading lights forward. Two stowage cupboards with louvred doors. Aft to starboard is the guest cabin with upper and lower berths, and opening portlight. To port is the heads compartment with manual Jabsco marine WC facing aft and basin with mirror, shaver socket and fluorescent light. Stowage lockers outboard with louvred doors.

Deck Equipment

General:

- Solid guard rails, cockpit grab-rail and pulpit.
- Horn .
- Three windscreen wipers.

Anchoring & Mooring Equipment:

- Delta anchor.
- Lofrans electric anchor windlass.
- Six substantial mooring bits

Covers, Canvas & Cushions:

- Aft cockpit cushions.

Tender & Outboard:

- Inflatable tender.
- Seagull outboard engine.
- Stainless steel Simpson davits (currently de-mounted).

Safety Equipment:

- 1 x Plastimo 4 liferaft; service due 2012.
- Horseshoe lifering.
- Flares (date unverified).

Fire-fighting equipment:

- 1 x FE 2kg auto fire extinguisher system in engine bay (service date unverified).
- Manual fire extinguisher to saloon (service date unverified).
- Manual fire extinguisher to the starboard cabin (serviced date unverified).

Exclusions

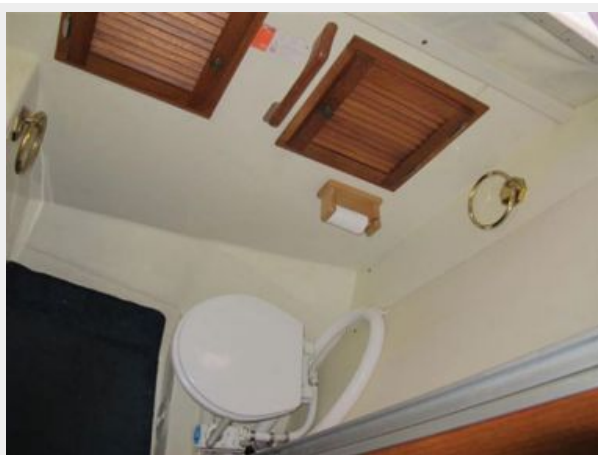
Owner's personal belongings.

Disclaimer

The Company offers the details of this vessel or yacht in good faith but cannot guarantee or warrant the accuracy of this information nor warrant the condition of the vessel. A buyer should instruct his representatives, agents, or his surveyors, to investigate such details as the buyer desires validated. This vessel or yacht is offered subject to prior sale, price change, or withdrawal without notice.

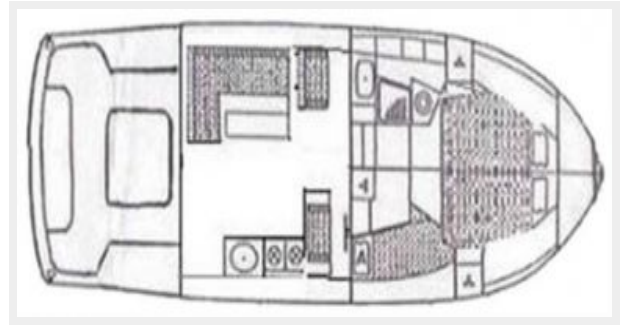
PHOTOS











CONTACTS

Andrey Shestakov, leading yacht broker of the sales department of Shestakov Yacht Sales Inc. Shestakov Yacht Sales Inc., the official representative of the Miami/Fort Lauderdale FL headquarters.

Contact details

Email: **andrey@shestakovyachtsales.com**

Web: shestakovyachtsales.com/en/

Telephones

USA: +1(954)274-4435

Office hours

Monday – Saturday: **9:00 - 21:00** EDT

Sunday: **closed**

Address



Harbour Towne Marina, 850 NE 3rd St,
STE 213, Dania, FL 33004