

## SNOW GOOSE — AQUA STAR



**Судостроитель:** AQUA STAR

**Год постройки:** 1989

**Модель:** Моторная яхта

**Цена:** ЦЕНА ЯХТЫ ПО ЗАПРОСУ

**Местонахождение:** United Kingdom

**Длина общая:** 33' 0" (10.06m)

**Ширина:** 11' 7" (3.53m)

**Мин. осадка:** 3' 3" (0.99m)

**Крейс. скорость:** 14 Kts. (16 MPH)

**Макс. скорость:** 19 Kts. (22 MPH)

Купить **SNOW GOOSE — AQUA STAR** а также выбрать подходящую вам яхту из нашего каталога яхт вам поможет опытный яхтенный брокер Андрей Шестаков. На сегодняшний день компания **Shestakov Yacht Sales Inc.** имеет большое количество яхт в собственном списке продаж, а также тесно сотрудничает со всеми крупными яхтенными производителями по всему миру.

Для того чтобы купить яхту **SNOW GOOSE — AQUA STAR** а также проконсультироваться по любому вопросу связанному с покупкой, продажей, чартером яхт позвоните по телефону **+7(918)465-66-44**.

# ОГЛАВЛЕНИЕ

ОГЛАВЛЕНИЕ	2
ХАРАКТЕРИСТИКИ	4
Обзор	4
Основная информация	4
Размеры	4
Скорость, вместимость и масса	4
Размещение	4
Корпус и палуба	5
Информация о двигателе	5
ПОДРОБНОЕ ОПИСАНИЕ	6
Broker's Comments	6
Owner's Comments	6
Construction	6
Machinery	7
Electrical Systems	7
Plumbing Systems	8
Tankage	8
Navigation Equipment	8
Domestic Equipment	9
Accommodation	10
Deck Equipment	10
Исключения	11
Отказ от ответственности	11
ФОТОГРАФИИ	13
КОНТАКТЫ	18
Контактная информация	18
Телефоны	18
Время работы	18

---

Адрес

18

# ХАРАКТЕРИСТИКИ

## Обзор

Good example of the Aqua-Star 33 Aft Cockpit. This 33 has updated nav. equipment and has been kept up to speed with fresh batteries, heater and engine servicing.

## Основная информация

Тип судна: Моторная яхта

Модельный год: 1989

Год постройки: 1989

Страна: United Kingdom

## Размеры

Длина общая: 33' 0" (10.06m)

Ширина: 11' 7" (3.53m)

Мин. осадка: 3' 3" (0.99m)

## Скорость, вместимость и масса

Крейс. скорость: 14 Kts. (16 MPH)

Макс. скорость: 19 Kts. (22 MPH)

Водоизмещение: 16799.2243644 Pounds Вместимость воды: 26.4172052 Gallons

Объем топливного бака: 211.3376416  
Gallons

## Размещение

Всего кают: 2

Всего коек: 4

Всего ком. состава: 1

## Корпус и палуба

---

**Материал корпуса:** GRP

**Материал палубы:** GRP

**Комплектация корпуса:** Semi-Displacement

**Дизайнер корпуса:** Geoff Wilson

## Информация о двигателе

---

**Двигатели:** 2

**Производитель:** Thornycroft

**Модель:** T358

**Тип двигателя:** Inboard

**Тип топлива:** Diesel

# ПОДРОБНОЕ ОПИСАНИЕ

---

## Broker's Comments

---

Built of strong stuff in Guernsey, these semi-displacement hulls are a preferred choice for those looking for comfortable offshore cruising from a pedigree boat-builder who also supply commercially. This 33 has updated navigational equipment including HD radar, a recent plotter and has been kept up to speed with fresh batteries, heater and engine servicing. There is vast storage volume in a full-beam aft lazarette and in under-floor lockers forward of the engines, and she is being sold with a full inventory to include davits, liferaft, dinghy and outboard.

## Owner's Comments

---

SNOW GOOSE is a wonderful, go-anywhere, anytime yacht which has looked after me on the water over the last six years. Together we have been across the Channel, to the West Country and just about everywhere in the Solent. She has never let me down. She has been based at Berthon Lymington Marina since 2010 where she has been looked after and upgraded by Berthon's maintenance team. Personal circumstances mean that I am taking a break from boating, otherwise she would NOT be for sale.

## Construction

---

*Overall Measured Length: 33' incl. 1'2" anchor and BR. Beam 11'2".*

*RCD Status: Our understanding is that the yacht is exempt from the essential safety requirements of Directive 94/25EC (Recreational Craft Directive) as she was built and placed into use within the EU prior to 1998.*

*Hull, Deck & Superstructure Construction:*

- White GRP hull with blue topsides stripe.
- GRP decks with grey non-slip painted pads, white superstructure with blue band.
- Teak laid cockpit and aft cockpit locker lids.
- Black rubberized D-section fendering around hull.

---

## Machinery

---

### *Engine & Gearboxes:*

- 2 x Thornycroft T358 210hp diesel engines (1989).
- PRM 402 1.5:1 reduction gearbox.

### *Maintenance & Performance:*

- Engine Hours: c. 1012/1070 as of 17-12-13.
- Cruising Speed: 14 knots.
- Maximum Speed: 19 knots.
- Engine Overhauled/Service: September 2012.

### *Propulsion & Steering:*

- Chromed Morse single lever gear/throttle controls.
- Hydraulic steering system.

---

## Electrical Systems

---

### *Voltage Systems:*

- 12V

### *Battery Banks:*

- 2 x Engine batteries; 140ah, rated at 12v.
- 2 x Varta LFD140 domestic batteries; 140ah, rated at 12v (September 2012).

### *Battery Chargers:*

- Sterling Pro Charger (12v/30A) multi-step charger.

*Alternators:*

- 2 x Engine alternators.

*Shore Power:*

- Shore power system.

## Plumbing Systems

---

*Fresh Water & Water Heating System:*

- Electric pressurized fresh water system.
- Hot water heater and engine calorifier.

*Bilge Pumps:*

- 2 x Bilge pumps.
- 1 x manual Whale pump in aft cockpit locker.

## Tankage

---

*Fuel:*

- Total fuel capacity of 800 litres.

*Fresh water:*

- Total fresh water capacity of 100 litres.

## Navigation Equipment

---

- Garmin 3010 C colour plotter/radar.
- Garmin HD radar scanner (2013).
- Garmin GPS 126.



- B&G Network quad-speed/depth.
- B&G Network pilot.
- Clipper digital navtex.
- Raymarine Ray54E DSC VHF.
- Plastimo offshore 105 steering compass.
- KVH/Azimuth 1000 digital compass.
- Icom IC-M33 handheld VHF.

## Domestic Equipment

---

### *Galley:*

- 4-burner stainless steel gas hob, plus Spinflo Cara gas oven.
- Indel B 12v refrigerator.
- Stainless steel sink and hot and cold mixer tap.
- Cutlery and crockery.

### *Heads/Showers:*

- Jabsco manual WC.
- 1 x Shower head on umbilical from sink.
- 1 x Shaver electric socket in heads compartment.

### *Heating & Ventilation:*

- Webasto diesel heating system (serviced 2012).
- Screen demisters.

### *Entertainment:*

- Panasonic radio cassette entertainment system.

- JVC flat screen television to forward cabin (screen is scratched).

## Accommodation

---

### *Summary of Accommodation:*

- 2 x single berths and 1 x double berth in 2 cabins. ( singles are in bunk format )
- Interior finished in teak.
- Blue carpets, plus blue diamond patterned velour cloth upholstery.

### *Description of layout:*

L-shaped saloon seating with table to port, galley with stowage beneath to starboard. Single navigator's seat and chart table area forward, with two seater helm bench to console, and opening hatch to roof. Stowage underneath forward floor sections, engine access under mid-aft hatches. Double cabin with centerline berth forward, deck hatch and fixed side portlights. Overhead fluorescent lighting and two cabin reading lights forward. Two stowage cupboards with louvred doors. Aft to starboard is the guest cabin with upper and lower berths, and opening portlight. To port is the heads compartment with manual Jabsco marine WC facing aft and basin with mirror, shaver socket and fluorescent light. Stowage lockers outboard with louvred doors.

## Deck Equipment

---

### *General:*

- Solid guard rails, cockpit grab-rail and pulpit.
- Horn .
- Three windscreen wipers.

### *Anchoring & Mooring Equipment:*

- Delta anchor.
- Lofrans electric anchor windlass.
- Six substantial mooring bits

*Covers, Canvas & Cushions:*

- Aft cockpit cushions.

*Tender & Outboard:*

- Inflatable tender.
- Seagull outboard engine.
- Stainless steel Simpson davits (currently de-mounted).

*Safety Equipment:*

- 1 x Plastimo 4 liferaft; service due 2012.
- Horseshoe lifering.
- Flares (date unverified).

*Fire-fighting equipment:*

- 1 x FE 2kg auto fire extinguisher system in engine bay (service date unverified).
- Manual fire extinguisher to saloon (service date unverified).
- Manual fire extinguisher to the starboard cabin (serviced date unverified).

## **Исключения**

---

При продаже яхты исключаются личные вещи владельца.

## **Отказ от ответственности**

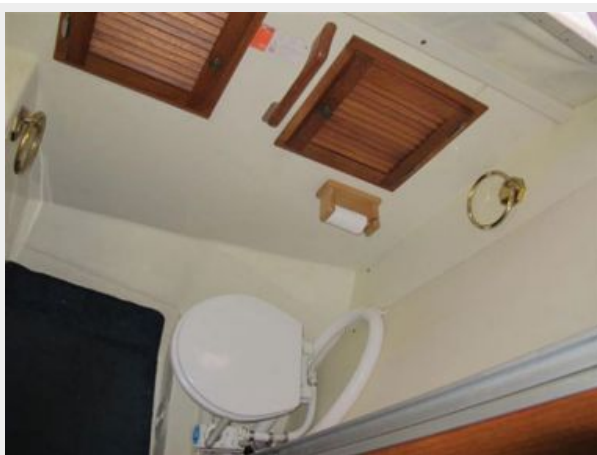
---

Компания предоставляет описание судна или яхты добросовестно, но не может гарантировать точность этой информации, а также не ручается за техническое состояние. Покупатель должен проинструктировать своих агентов или оценщиков исследовать представленную информацию более подробно, по собственному желанию. Продажа судна или яхты, изменение цены или снятие с продажи будет происходить без

предварительного уведомления.

# ФОТОГРАФИИ

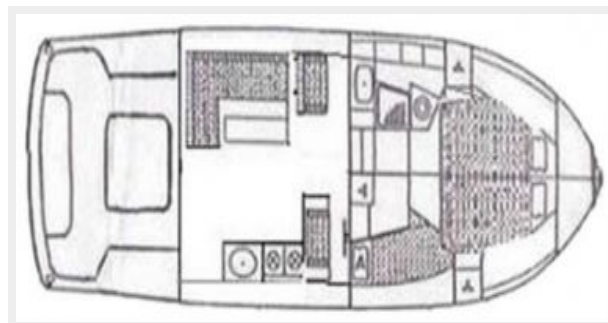












# КОНТАКТЫ

---

Андрей Шестаков (Andrey Shestakov) – ведущий яхтенный брокер отдела продаж яхт и судов компании Shestakov Yacht Sales Inc. Официальный представитель Shestakov Yacht Sales Inc. для русскоговорящих клиентов в центральном офисе компании в Майами/Форт Лодердейл/Флорида/США.

## Контактная информация

---

Email: [andrey@shestakovyachtsales.com](mailto:andrey@shestakovyachtsales.com)

Web: [shestakovyachtsales.com](http://shestakovyachtsales.com)

## Телефоны

---

Краснодарский край: **+7(918)465-66-44**

США, Майами, Флорида: **+1(954)274-4435**

## Время работы

---

Понедельник – Суббота: **9:00 - 21:00**  
EDT

Воскресенье: **Закрето**

## Адрес

---



Harbour Towne Marina, 850 NE 3rd St,  
STE 213, Dania, FL 33004