

OCEAN FRONT PROPERTY — MAINSHIP



Builder: MAINSHIP

Year Built: 2006

Model: Trawler

Price: PRICE ON APPLICATION

Location: United States

LOA: 43' 0" (13.11m)

Cruise Speed: 16 Kts. (18 MPH)

Max Speed: 20 Kts. (23 MPH)

Our experienced yacht broker, Andrey Shestakov, will help you choose and buy a yacht that best suits your needs **Ocean Front Property — MAINSHIP** from our catalogue. Presently, at Shestakov Yacht Sales Inc., we have a wide variety of yachts available on our sale's list. We also work in close contact with all the big yacht manufacturers from all over the world.

If you would like to buy a yacht **Ocean Front Property — MAINSHIP** or would like help answering any questions concerning purchasing, selling or chartering a yacht, please call **+1(954)274-4435**

TABLE OF CONTENTS

TABLE OF CONTENTS	2
SPECIFICATIONS	3
Basic Information	3
Dimensions	3
Speed, Capacities and Weight	3
Accommodations	3
Hull and Deck Information	3
Engine Information	3
DETAILED INFORMATION	4
Additional Information	4
Exclusions	4
Disclaimer	4
PHOTOS	5
CONTACTS	14
Contact details	14
Telephones	14
Office hours	14
Address	14

SPECIFICATIONS

Basic Information

Category: Trawler

Model Year: 2006

Year Built: 2006

Country: United States

Dimensions

LOA: 43' 0" (13.11m)

LOD: 43' 0" (13.11m)

Speed, Capacities and Weight

Cruise Speed: 16 Kts. (18 MPH)

Max Speed: 20 Kts. (23 MPH)

Displacement: 40000 Pounds

Water Capacity: 200 Gallons

Fuel Capacity: 777 Gallons

Accommodations

Total Cabins: 2

Total Heads: 1

Hull and Deck Information

Hull Material: Fiberglass

Engine Information

Engines: 2

Manufacturer: Cummins

Model: QSC 8.3

Engine Type: Inboard

Fuel Type: Diesel

DETAILED INFORMATION

Additional Information

Boat Name Ocean Front Property **Dimensions** LOA: 47 ft 0 in Length on Deck: 43 ft 0 in Dry Weight: 40000 lbs **Engines** Engine 1: Engine Brand: CUMMINS Year Built: 2006 Engine Model: QSC 8.3 Engine Type: Inboard Engine/Fuel Type: Diesel Engine Hours: 850 Drive Type: Direct Drive Engine(s) Total Power: 550 HP Engine 2: Engine Brand: CUMMINS Year Built: 2006 Engine Model: QSC 8.3 Engine Type: Inboard Engine/Fuel Type: Diesel Engine Hours: 850 Drive Type: Direct Drive Engine(s) Total Power: 550 HP **Tanks** Fresh Water Tanks: 1 (200 Gallons) Fuel Tanks: 1 (777 Gallons) **Accommodations** Number of cabins: 2 Number of heads: 1 **Electronics** Repeater(s) CD player Plotter Radio TV set Navigation center DVD player Autopilot Depthsounder GPS Radar Log-speedometer Compass VHF **Inside Equipment** Electric bilge pump Hot water Bow thruster Oven Sea water pump Fresh water maker Deep freezer Heating Electric head Washing machine Battery charger Refrigerator Microwave oven Air conditioning **Electrical Equipment** Shore power inlet Generator Inverter **Outside Equipment/Extras** Cockpit table Swimming ladder Gangway Cockpit shower Tender Outboard engine brackets **Covers** Bimini Top

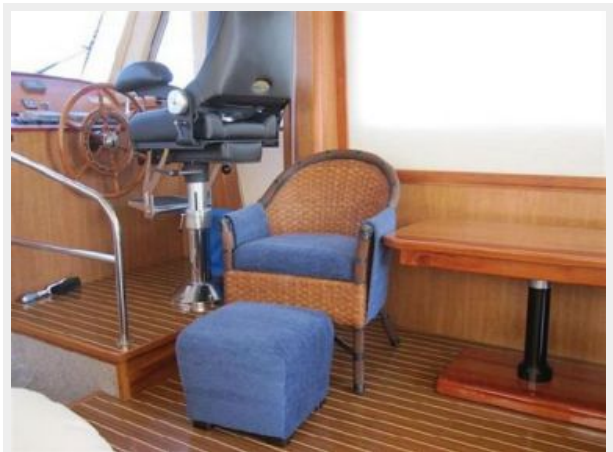
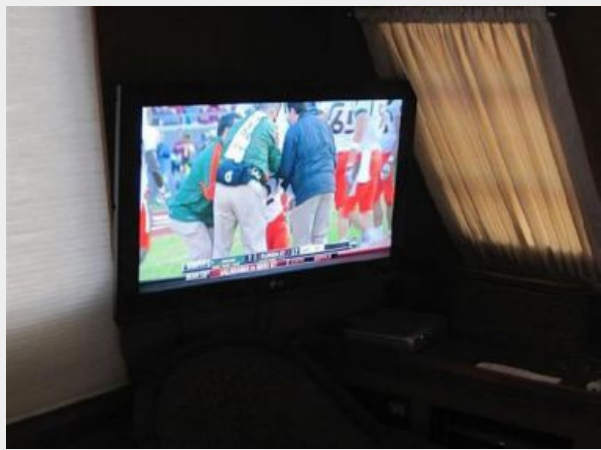
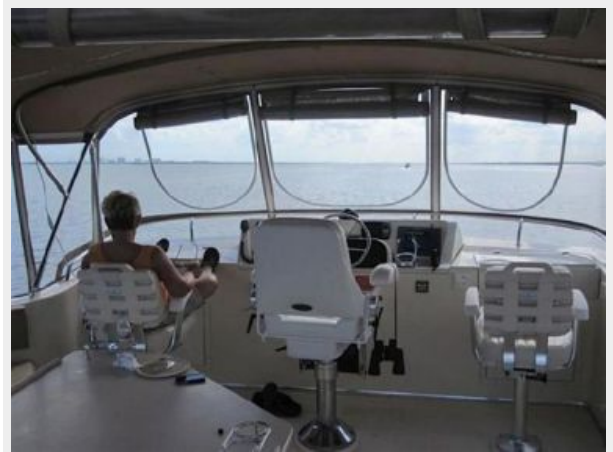
Exclusions

Owner's personal belongings.

Disclaimer

The Company offers the details of this vessel or yacht in good faith but cannot guarantee or warrant the accuracy of this information nor warrant the condition of the vessel. A buyer should instruct his representatives, agents, or his surveyors, to investigate such details as the buyer desires validated. This vessel or yacht is offered subject to prior sale, price change, or withdrawal without notice.

PHOTOS



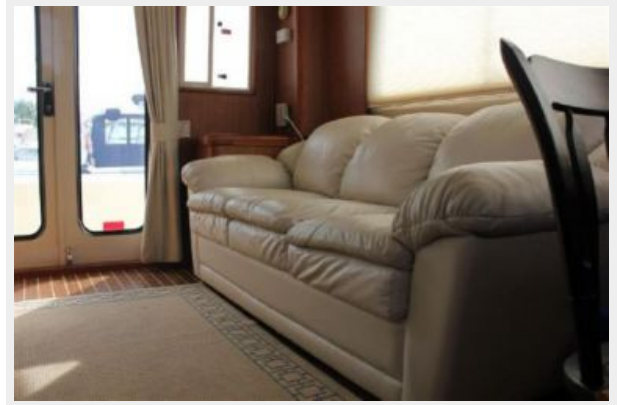


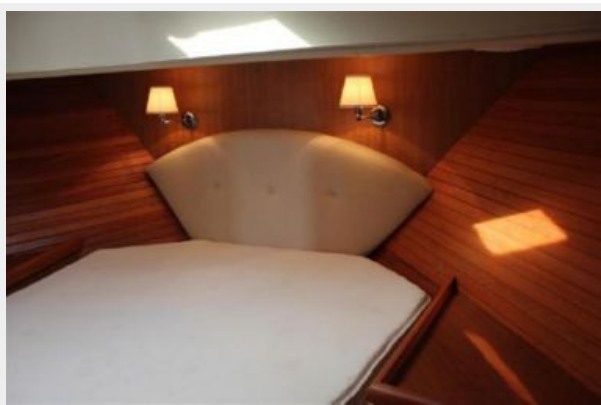














CONTACTS

Andrey Shestakov, leading yacht broker of the sales department of Shestakov Yacht Sales Inc. Shestakov Yacht Sales Inc., the official representative of the Miami/Fort Lauderdale FL headquarters.

Contact details

Email: andrey@shestakovyachtsales.com

Web: shestakovyachtsales.com/en/

Telephones

USA: +1(954)274-4435

Office hours

Monday – Saturday: **9:00 - 21:00** EDT

Sunday: **closed**

Address



Harbour Towne Marina, 850 NE 3rd St,
STE 213, Dania, FL 33004