

SKIRT CHASER — BUDDY CANNADY



Builder: BUDDY CANNADY

Year Built: 1992

Model: Sport Fisherman

Price: PRICE ON APPLICATION

Location: United States

LOA: 55' 0" (16.76m)

Beam: 17' 0" (5.18m)

Max Draft: 4' 5" (1.35m)

Our experienced yacht broker, Andrey Shestakov, will help you choose and buy a yacht that best suits your needs **Skirt Chaser — BUDDY CANNADY** from our catalogue. Presently, at Shestakov Yacht Sales Inc., we have a wide variety of yachts available on our sale's list. We also work in close contact with all the big yacht manufacturers from all over the world.

If you would like to buy a yacht **Skirt Chaser — BUDDY CANNADY** or would like help answering any questions concerning purchasing, selling or chartering a yacht, please call **+1(954)274-4435**

TABLE OF CONTENTS

TABLE OF CONTENTS	2
SPECIFICATIONS	3
Overview	3
Basic Information	3
Dimensions	3
Accommodations	3
Hull and Deck Information	3
Engine Information	4
DETAILED INFORMATION	5
Engine Room	5
Salon	5
Companionway	5
V-Berth	5
Head	5
Bridge and Electronics	6
Cockpit	6
Other Details	6
Exclusions	6
Disclaimer	6
PHOTOS	7
CONTACTS	13
Contact details	13
Telephones	13
Office hours	13
Address	13

SPECIFICATIONS

Overview

Fast, economical, easy handling single screw Custom Carolina Sportfish. Built by Buddy Cannady and powered with a 1150 hp Caterpillar C-18, this boat is ready for immediate charter service or easy conversion to an affordable private boat. Low hours on motor, Northern Lights Generator, practical layout and plenty of rod and tackle storage. A Comfortable ride, fishability, economy and low maintenance are what BC boats are all about. Call Tournament Yacht Sales today and ask about the Skirt Chaser.

Basic Information

Category: Sport Fisherman

Model Year: 1992

Year Built: 1992

Country: United States

Vessel Top: Hardtop

Fly Bridge: Yes

Cockpit: Yes

Dimensions

LOA: 55' 0" (16.76m)

Beam: 17' 0" (5.18m)

Max Draft: 4' 5" (1.35m)

Accommodations

Total Cabins: 1

Total Berths: 4

Total Heads: 1

Hull and Deck Information

Hull Material: Composite

Engine Information

Engines: 1

Manufacturer: Caterpillar

Model: C-18

Engine Type: Inboard

Fuel Type: Diesel

DETAILED INFORMATION

Engine Room

Pro Mariner 12v/30a 3 bank charger Phase 3 PT 24 3 stage smart Charger EFR 105 water heater Vanner 60 amp voltmaster Twin Racor main fuel filtration Racor fuel filtration for generator Blue Sea 120 amp charging relays 6/ Optima Blue Top Batteries Sea Star Power Steering System Shur Flo Fresh Water Pump Shur Flo Raw Water Pump Mounted Jabsco Oil Change System 4/ Rule 2000 Bilge Pumps with Floats 120v and 12v lighting Access from companionway Gusseted frames Fire extinguishers Ample storage outboard of motor 40 gal. FW tank Power supply for 24v electric reels 2/ 120v receptacles

Salon

Painted double doors to center, auto-pull open on cables Tackle center/countertop to Port, 7' cushioned bench, storage, bartop and sea rails Tackle center to Stbd., L-shaped cushioned bench, storage and split open armrest box at turn Magic chef refrigerator Sharp Carousel Microwave Phillips Flat Screen TV Magnavox VCR/DVD player Pioneer stereo with Sirius XM Speakers, lighting and receptacles throughout Custom dash cabinetry and entertainment center with lots of storage and access Teak trim, sea rails, valances, push button style satin nickel hardware Stretched headliner with 8' grabrail Vinyl cushioned benches Rod storage overhead Wallpaper and padded panels throughout

Companionway

Carpeted steps White awl-grip painted trim, wallpaper and carpet Custom 2 bunk layout to Port, fabric covered cushions, storage drawers in bottom bunk Inter-Vac central vacuum GE 5' freezer Overhead rod storage 24k BTU SMXir A/C unit installed 2013 Stretched headliner Lots of tackle storage, drawers and closets Lighting and receptacles throughout

V-Berth

Solid Teak door for privacy Large Cushioned Berth Carpeted walls Rod and gaff storage 5 large Tackle drawers Hanging closets to Port and Stbd Anchor and rode access fwd Large Centered Bomar Hatch Wallpaper, stretched headliner Lighting throughout

Head

Large head to Stbd Solid countertop with sink, vanity and Raritan toilet Full shower fwd Tile floor Pocket Style door Wallpaper, white Awl-grip trim

Bridge and Electronics

Center console dash with cushioned benches to Port and Stbd Storage throughout dash and console 2/ Standard Horizon VHF ACR Remote spotlight Northstar 951x plotter Simrad AP 35 autopilot Furuno 10" Navnet Chartplotter, Radar, Sounder Furuno FCV-292 Sounder Dytex Temp Gauge Sirius master control 12v dash subpanel Lenco trim tabs 2/ 50w Shimano Tiagra Teaser Reels Full front and side enclosure Danforth Constellation Compass Stereo Manual bilge pump switches 12v power plug Carpeted bridge deck and overhead Manual Oil Pressure gauge Caterpillar MPD Dual Lever Control

Cockpit

Large ice box with below storage to Stbd Bait box, storage and drink box to Port Murray Bros. Fighting Chair 2 Croswait mounted cockpit chairs with gimbals Teak cover boards with cleats on top 1000 lb. fish box 24v LP teaser reel power 20 rod holders Painted deck FW and SW washdown Ladder to bridge Lazz access hatch Rupp triple spreader Outriggers Overhang with deck lights and speakers Under coverboard rope lighting

Other Details

Caterpillar C18 1150 hp installed 2011 ZF 550 2:1 Transmission Northern Lights Model M673LD2 4.5 kw generator installed 2008

Exclusions

Owner's personal belongings.

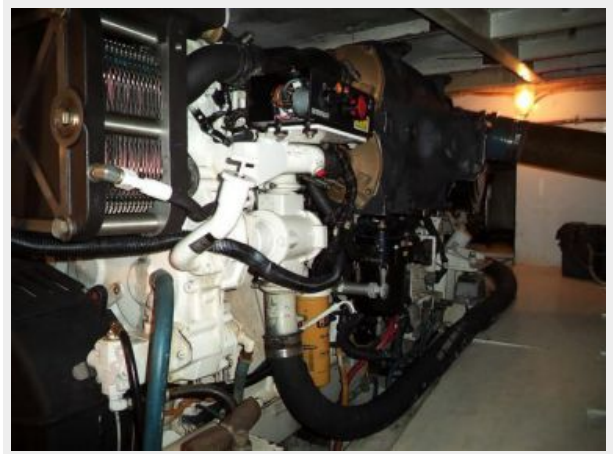
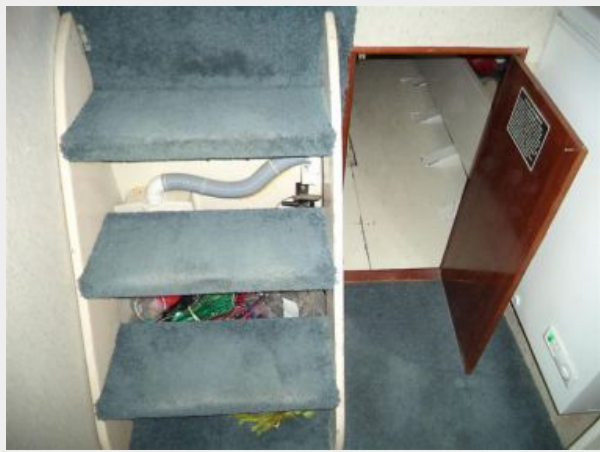
Disclaimer

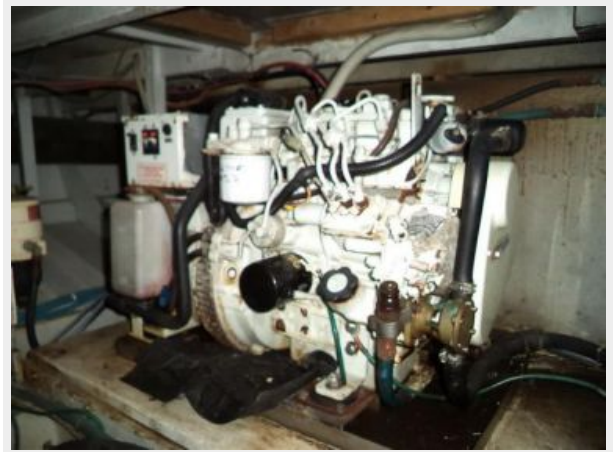
The Company offers the details of this vessel or yacht in good faith but cannot guarantee or warrant the accuracy of this information nor warrant the condition of the vessel. A buyer should instruct his representatives, agents, or his surveyors, to investigate such details as the buyer desires validated. This vessel or yacht is offered subject to prior sale, price change, or withdrawal without notice.

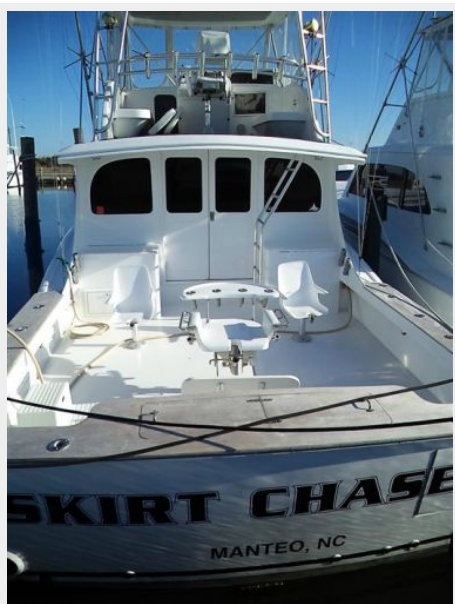
PHOTOS













CONTACTS

Andrey Shestakov, leading yacht broker of the sales department of Shestakov Yacht Sales Inc. Shestakov Yacht Sales Inc., the official representative of the Miami/Fort Lauderdale FL headquarters.

Contact details

Email: andrey@shestakovyachtsales.com

Web: shestakovyachtsales.com/en/

Telephones

USA: +1(954)274-4435

Office hours

Monday – Saturday: **9:00 - 21:00** EDT

Sunday: **closed**

Address



Harbour Towne Marina, 850 NE 3rd St,
STE 213, Dania, FL 33004