

## LADY M — INTERMARINE



**Судостроитель:** INTERMARINE

**Год постройки:** 2002

**Модель:** Моторная яхта

**Цена:** ЦЕНА ЯХТЫ ПО ЗАПРОСУ

**Местонахождение:** United States

**Длина общая:** 147' 0" (44.81m)

**Ширина:** 28' 0" (8.53m)

**Макс. осадка:** 7' 10" (2.39m)

**Крейс. скорость:** 15 Kts. (17 MPH)

**Макс. скорость:** 18 Kts. (21 MPH)

Купить **LADY M — INTERMARINE** а также выбрать подходящую вам яхту из нашего каталога яхт вам поможет опытный яхтенный брокер Андрей Шестаков. На сегодняшний день компания **Shestakov Yacht Sales Inc.** имеет большое количество яхт в собственном списке продаж, а также тесно сотрудничает со всеми крупными яхтенными производителями по всему миру.

Для того чтобы купить яхту **LADY M — INTERMARINE** а также проконсультироваться по любому вопросу связанному с покупкой, продажей, чартером яхт позвоните по телефону **+7(918)465-66-44**.

# ОГЛАВЛЕНИЕ

ОГЛАВЛЕНИЕ	2
ХАРАКТЕРИСТИКИ	5
Основная информация	5
Размеры	5
Скорость, вместимость и масса	5
Размещение	6
Корпус и палуба	6
Информация о двигателе	6
ПОДРОБНОЕ ОПИСАНИЕ	7
Accommodations	7
Main Salon	7
Dayhead	7
Dining Salon	8
Galley	8
Master Stateroom	8
His & Hers Master Bath	8
VIP King Stateroom, Forward	9
Queen Guest Stateroom, Port	9
Queen Guest Stateroom, Stbd.	9
Twin Guest Stateroom, Amidship	9
Laundry Room	10
Captain's Cabin, Upper Deck	10
Crew Quarters	10
Crew Lounge	10
(2) Crew Cabins, Port & Stbd.	10
Skylounge	11
Pilothouse Electronics & Equipment	11
Wing Stations, Port & Starboard	11

Flybridge Equipment	12
Upper Aft Boat Deck	12
Tender & Toys	12
Aft Deck	12
Deck Equipment	13
Lazarette	13
Electrical System	13
Engine/Mechanical Equipment	13
Maintenance & Upgrades	14
Exclusions	14
Remarks	14
Исключения	15
Отказ от ответственности	15
<b>ФОТОГРАФИИ</b>	<b>16</b>
Aft Deck	16
Main Salon	16
Dining	16
Galley	16
Wheelhouse	16
Galley	16
Master	17
Master	17
Master bath	17
Guest	17
Guest head 1	17
Guest	17
Guest head 2	18
Guest	18
Guest head 3	18

---

Guest	18
Crew Galley	18
Skylounge	18
Sun Deck	19
Upper Deck Aft	19
GA	19
Sun Deck	19
<b>КОНТАКТЫ</b>	<b>20</b>
Контактная информация	20
Телефоны	20
Время работы	20
Адрес	20

# ХАРАКТЕРИСТИКИ

## Основная информация

**Тип судна:** Моторная яхта

**Подкатегория:** Tri-Deck

**Модельный год:** 2002

**Год постройки:** 2002

**Год обновления:** 2011

**Вид обновления:** New paint, maple joinery, marble, granite carpeting, FB seating, 3D flat screen TV's, and updated equipment

**Страна:** United States

**Верх:** Open

## Размеры

**Длина общая:** 147' 0" (44.81m)

**Ширина:** 28' 0" (8.53m)

**Макс. осадка:** 7' 10" (2.39m)

## Скорость, вместимость и масса

**Крейс. скорость:** 15 Kts. (17 MPH)

**Дальность на крейсерской скорости:**  
2600

**Макс. скорость:** 18 Kts. (21 MPH)

**Чистый вес:** 439 Pounds

**Вместимость воды:** 1110 Gallons

**Вместимость сточного бака:** 565 Gallons

**Объем топливного бака:** 11750 Gallons

## Размещение

---

Всего кают: 5

Спальные места: 10

Всего ком. состава: 6

Каюта капитана: Да

Каюты экипажа: 4

Койки экипажа: 6

Спальных мест экипажа: 8

Комм. состав экипажа: 4

## Корпус и палуба

---

Материал корпуса: Fiberglass

Материал палубы: Teak

Комплектация корпуса: Semi-Displacement

Дизайнер экстерьера: Intermarine

Дизайнер интерьера: Daniella Speicht

## Информация о двигателе

---

Двигатели: 2

Производитель: Caterpillar

Модель: 3512B

Тип двигателя: Inboard

Тип топлива: Diesel

# ПОДРОБНОЕ ОПИСАНИЕ

## Accommodations

**LADY M** accommodates ten owner's and guests in five luxurious staterooms plus crew quarters for up to eight in four cabins. Her custom, updated interior features honey glazed maple joinery along with all new carpet, new marble foyer flooring, new window treatments, upholstery and soft goods with rich fabrics and furnishings throughout the yacht in 2011. Her classic main salon and formal dining for ten set the tone for an elegant yachting experience. The galley was completely redone and upgraded with all new appliances in 2008. The Master stateroom located on the main deck features a luxurious King size bed, large 3D flatscreen TV along with an adjacent private sitting room with sofa, chairs and TV. The large his and her bath features marble and granite, massive central shower and Jacuzzi tub. The Guest staterooms include a large VIP stateroom with king size bed, two queen staterooms, and a twin stateroom. Each guest stateroom features private baths finished in marble, custom wallcoverings, his and her sinks, and custom fixtures. A well designed crew areas includes the hidden passageway from crew quarters to the VIP and lower guest accommodations to ensure discreet service. The captain's cabin, located on the upper deck, features a double berth, desk and private bath. There are three additional crew cabins along with a crew lounge. The engineer cabin is located aft and adjacent to the engine room with a full head and shower. Several intimate gathering spots include a stunning black granite, sit down bar in the skylounge with oversized windows and state-of-the-art entertainment systems. The upper flybridge deck provides dining for ten, ample seating areas, sun lounges, bar, grill, and Jacuzzi. The lower aft deck also features dining, wet bar, and access to the swim platform. There is a full assortment of water toys stored on the boat deck including a 18' Novurania tender and two 2007 Yamaha waverunners.

## Main Salon

All new audio/visual, soft goods, carpet, furnishings, new upholstery, and window treatments in 2011 plus custom sculptured carpet throughout. • Custom sculptured carpet throughout • Newly custom upholstered Baker Knapp & Tubbs sofa • Glass top coffee table w/gold leaf • (2) Upholstered arm chairs on rollers • Built-in end tables • (2) Newly upholstered occasional chairs • (2) Ralph Lauren high back chairs • Black lacquer player piano w/piano disc player • Built-in entertainment system w/Samsung 52" 3D TV, Blue Ray, Sony DSS receiver, Pioneer M426 multi-CD player, Crestron processor, Bose sound system & Request CD jukebox system along w/ Xbox & Wii • Custom window treatments w/wooden blinds, silk Austrians & valances • Recessed halogen lighting • Custom upholstered wall panels • Built-in satin finish maple cabinetry • Starboard foyer has new custom marble entryway flooring

## Dayhead

• Marble vanity top & flooring • New custom scalloped sink w/hand painted gold • Custom gold

fixtures • Custom wallcovering

---

## Dining Salon

---

Aft off the main foyer is the formal dining salon furnished with: • Custom maple dining table w/gold inlay • (10) Custom upholstered dining chairs w/gold inlay • Built-in marble buffet to port • Custom storage cabinetry for china, stemware & silverware • Service door to galley • Large fixed windows, port & stbd, w/custom wooden blinds & drapery panels w/tie backs (new 2011) • Custom upholstered wall panels & overhead • Detailed overhead oval soffit w/satin finish maple & fabric w/recessed halogen lighting & custom decorative light fixture • Starboard entry w/new marble foyer flooring leading to main salon (2011)

---

## Galley

---

The galley has been completely redone and upgraded in Oct. 2008 with all new appliances, and redesigned allowing for more working space and storage areas. Aft is a large pantry and service door leading to the dining area. • (3) Sub-Zero stainless steel 700TR refrigerators • Sub-Zero stainless steel 60001F freezer • Scotsman CU2026 icemaker • Miele Optima stainless steel dishwasher • Miele stainless high temperature, quick cycle sanitizer • Miele stainless steel double oven • Wolf Induction stainless steel cooktop stove • Custom 36" exhaust hood system • Wolf SMW24 stainless steel microwave • Blanco dual stainless steel sinks • Franke stainless steel prep sink • KitchenAid stainless steel trash compactor • Grohe Allegro faucets & fixtures • Futurea lighting system w/under counter LED lights • Service door to dining salon

---

## Master Stateroom

---

• The master stateroom has a double door entry into the private sitting room w/built-in entertainment center w/Samsung 52" LED 3D flatscreen TV, Direct TV, Sony digital Sat receiver, Blu-Ray, Bose sound system, and Crestron & Xbox system • (2) Sofa upholstered chairs w/ottomans & oval table • Walk-around King-size bed w/storage drawers below (new mattress 2011) • Custom new upholstered shams, coverlet & throw pillows (new 2011) • Upholstered bulkhead panels & overhead • Decorative overhead soffit w/satin finish maple trim & indirect lighting • Built-in satin finish maple nightstands • Built-in satin finish maple drawers, port & stbd • Built-in satin finish maple vanity w/glass doors • Samsung 42" flat screen & Blu-Ray • Decorate wall scones • Large cedar walk-in closet w/safe • Custom window treatment w/continuous drapery valance & wooden blinds

---

## His & Hers Master Bath

---

• Black marble vanity top & flooring • Large glass enclosed marble shower w/custom fixtures • Marble Jacuzzi tub • (2) Kohler decorative sinks w/custom gold fixtures • Custom wallcovering •



Custom wooden blinds & pleated shades • Decorative gold wall sconces

---

## VIP King Stateroom, Forward

---

• Walk-around King-sized bed w/storage below (new mattress 2011) • Custom spread, shams, coordinating drapes (new 2011) • Built-in satin finish, maple drawers, port & stbd • Built-in upholstered settee w/side cabinets • Entertainment cabinet w/Samsung 55" flatscreen 3D TV, Blu-Ray, Bose sound system, Xbox & Crestron - Walk-in cedar closet w/Sentry digital safe • Decorative wall sconces • Custom wallcovering & overhead panels • Large portholes w/custom window treatments • Double-doors into stateroom • Hidden access door to crew quarters • Halogen recessed lighting • Private bath w/marble vanity & flooring, new dual custom sinks, custom fixtures, new oversized mirrored panels w/storage, oversized marble, glass enclosed shower w/new custom fixtures & custom wallcoverings

---

## Queen Guest Stateroom, Port

---

• Walk-around Queen bed w/storage below (new mattress 2011) • Custom spread & shams (new 2011) • Built-in satin finish maple dressers, port & stbd • Built-in maple nightstands • Built-in entertainment cabinet w/Samsung 32" TV, Direct TV, Blu-Ray, Bose sound system & Crestron • Decorative wall sconces • Custom wallcoverings & overhead panels • Large portholes • Custom window treatments w/continuous drapery valance • Double door entry • Cedar closet w/shelf • Private bath w/marble vanity top & flooring, new custom dual sinks, new mirrors, custom fixtures, large glass enclosed marble shower & custom wallcoverings

---

## Queen Guest Stateroom, Stbd.

---

• Walk-around Queen bed w/storage below (new mattress 2011) • Custom spread & shams (new 2011) • Built-in satin finish maple dressers, port & stbd • Built-in maple nightstands • Built-in entertainment cabinet w/Samsung 32" TV, Blu-Ray, Bose sound system & Crestron control • Decorative wall sconces • Custom wallcoverings & overhead panels • Large portholes • Custom window treatments w/Roman silk pleated shades (2011) • Double door entry • Cedar closet w/shelf • Private bath w/marble vanity top & flooring, new custom dual sinks, custom fixtures, new mirrors, large glass enclosed marble shower & custom wallcoverings

---

## Twin Guest Stateroom, Amidship

---

• Twin beds w/storage below (new mattress 2011) • Custom spread & shams (new 2011) • Built in maple dressers & bookshelf • Entertainment cabinet w/Samsung TV, Blu-Ray, Crestron & Xbox • Large window w/custom pleated shades • Decorative table lamps • Private bath w/marble vanity top, marble flooring, new custom sink, custom fixtures, custom wallcoverings & glass enclosed marble shower

---

## Laundry Room

---

Located in the lower guest foyer is a laundry room to starboard with: • GE Profile washer • Miele dryer (2010) • Sink w/Corian countertop • Storage cabinets & drawers • (2) Sub-Zero refrigerator drawers (just outside laundry room) • Accent table, art niche & mirror in companionway

---

## Captain's Cabin, Upper Deck

---

The captain's cabin is located on the upper deck off the pilothouse featuring • Double bed w/storage below (new mattress 2011) • Built-in satin finish maple nightstands • Reading lights • Built-in desk w/computer & phone • (2) Recessed stereo speakers • Overhead recessed halogen lighting • Private bath w/Corian vanity top, mirror, stall shower & custom fixtures

---

## Crew Quarters

---

Forward on the lower deck are two similar crew cabins with upper and lower berths with private heads with showers. Aft is the crew lounge area with settee dinette with seating for up to ten. There is an engineer's cabin aft of the engine room.

---

## Crew Lounge

---

• New upholstered settee w/seating for up to (10) • Corian table & countertops • Kitchenette unit w/stainless sink • Kenmore refrigerator • GE microwave oven • Trash compactor • Entertainment cabinet w/Samsung 32" TV, Blu-Ray, Parasound tuner • Stacked Miele washer & dryer • B&G HS2000 multi system • Ship's alarm panel • Icom M502 radio • Panasonic phone system • Opening portholes • Equipment room beneath stairs • Custom wallcovering & overhead panels • Linen closet • Large pantry room • Storage room w/fold-down berth for extra crew person • Access sound proof door to VIP & guest staterooms

---

## (2) Crew Cabins, Port & Stbd.

---

• Twin berths w/lockers below in each cabin (new mattress' 2011) • Nightstands & dressers w/drawers • Hanging lockers • Reading lights • Recessed halogen lighting • Custom wallcovering & overhead panels • TV & stereo system • Each cabin w/private head, Corian vanity, shower, mirror, custom fixtures, custom wallcovering • Engineer's Cabin, Aft of engine room: • Oversized berth w/lockers below (new mattress 2011) • Additional Pullman berth • Nightstand & dresser w/drawers • Sony TV, DSS receiver, Sony DVD/CD player • Recessed halogen lighting • Custom window treatments • Custom wallcovering & overhead panels • Private bath w/Corian vanity, port light & stall shower

## Skylounge

The skylounge is aft of the pilothouse. There is a marble day head, large panoramic windows with custom wooden blinds, and a stainless steel framed glass double door leading aft to the boat deck. To starboard is a large, black granite top, and a sit down bar with six leather upholstered bar chairs. The bar is equipped with a Sub-Zero undercounter refrigerator, Sub-Zero wine cooler, Miele icemaker, and bottle & glass storage. There is a large built-in entertainment center equipped with all state of the art audio visual equipment. The skylounge is furnished with all new soft goods in 2011 to include:

- Custom upholstered sofa
- Custom upholstered wallcovering
- Custom upholstered overhead panels
- Built-in maple bookcases
- Custom maple crown molding
- Large upholstered ottoman/table
- (2) Leather recliners (new 2011)
- Occasional tables w/lamps
- Game table w/chairs
- (5) Wood & leather upholstered bar chairs
- Samsung 42" flatscreen 3D TV w/ Xbox & Wii
- (2) Decorative wall sconces (2011)
- Custom window treatment w/silk drapery tie back panels & custom wooden blinds

## Pilothouse Electronics & Equipment

- (1) Furuno Black Box 96-mile Radars w/ARPA
- (1) Furuno Black Box 72-mile Radars w/ARPA
- (2) Northstar 941X GPS (new 2011)
- Furuno GPS (2011)
- Anschutz Pilotstar D Autopilot
- Anschutz FU tiller
- Furuno FCV1200L color video depth finder
- (2) B&G 20/20 multi-function instruments
- Raytheon Gyro repeater
- Sea 857 loudhailer
- Sea 7157 VHF radio
- Icom M602 VHF radio w/distress
- Elbex EXS128 switcher for monitoring w/5 cameras
- Furuno Universal AIS
- Naiad Multi Sea digital stabilizer controls (new 2011)
- Bow thruster control
- Compaq navigation computer
- B&G HS2000 multi-function system
- (4) Video screens for radar, plotter, camera, depth & ship's systems
- (2) Caterpillar digital display panels
- Mimic panels w/controls for lighting, bilge, fire, engines, gens & tanks
- Brother MFC4800 laser all-in-one system
- (2) ACR RCL100 remote spotlight controls
- HP PSC175 printer/fax/scanner
- C&P magnetic compass
- (2) Kobelt rudder angle indicators
- Kahlenberg M511 horn controls
- (4) Extron MKP1000 monitor controls
- Sea Tel TAC92 Gyro TV controller
- Sea Tel MCM-3 multi-channel switcher
- Okidata Sat Com printer
- Anschutz gyro
- Columbus Nauticomp navigation computer
- Sea 6606 message terminal for Globestar
- KVH Trac Phone
- Furuno NX500 Nav Tex receiver
- Sea Tel Wave call controller
- C Sat 3 emergency call
- New upholstered helm bench seat
- Leather settee
- Teak & holly flooring
- Samsung 32" LCD TV
- 5-Panel windshield w/washers & wipers
- Entrance up to skylounge to starboard
- Port & starboard side opening deck doors & aft door to captains cabin
- New maple molding

## Wing Stations, Port & Starboard

- B&G HS2000 multifunction
- Kobelt steering lever & single lever engine controls
- (2) Caterpillar digital engine displays
- Naiad bow thruster control
- (2) Kobelt rudder angle indicators
- Kobelt takeover switching
- Engine starts & stops

---

## Flybridge Equipment

---

• Reconfigured flybridge U-shaped seating area aft (2011) • New teak oval dining table (2011) • New teak decks (2011) • New vertical windscreen w/tinted glass (2011) • Centerline island bar w/new granite bar top, sink, new U-line refrigerator, Scotsman commercial icemaker & (3) new leather bar stools (all new 2011) • (2) Large side settees w/storage below & (2) round café tables • Half moon settee forward w/cushions & (2) round café tables • Spa Builders large Jacuzzi forward w/cushioned canvas cover • Electric Chef outdoor grill in custom cabinet • (2) Oversized 3-person sun lounges aft w/cushions & covers • Built-in lockers fwd • Smoked Lexan windscreen w/polished stainless railing • Radar arch fully outfitted • New caprails (2011) • Kahlenberg triple trumpet air horn on mast • (4) 8-man life rafts • Sunbrella cushions throughout & canvas covers (new 2011) • Samsung 32" LCD TV • Elbex closed circuit TV remote • Bose marine outdoor speakers • All new canvas & covers (2011) • Upgraded lighting system throughout (2011)

---

## Upper Aft Boat Deck

---

• Wet bar w/new granite top, new stainless sink & Sub-Zero refrigerator/freezer • Large teak dining table w/outdoor rattan sofa settee w/cushions • Rattan love seat, (2) chairs & rocking chair w/cushions • Glass stainless doors into skylounge • Samsung 32" flatscreen TV (2011) • Stainless steel handrails up to the bridge • Stairs w/stainless railing down to aft deck • Teak decks • Polished s/s railings w/lift-out for tender deployment • Door bumpers & hooks • Supply vents for engine room ventilation • Recessed Halogen lights • Marquipt 4000lb hydraulic davit • Elbex remote closed circuit TV • New canvas sunshade (2011) • All new cushions & covers (2011)

---

## Tender & Toys

---

• New 18' Novurania tender w/Yamaha 115 HP, 4-stroke O/B • (2) Yamaha 3-man waverunners • (2) 11' Paddleboards • 6 complete sets of scuba equipment (2013)

---

## Aft Deck

---

• Double, raised walk-up bar w/new granite top, new s/s sink, U-Line refrigerator/freezer & U-Line icemaker (new 2011) & storage • Large, teak round table w/stainless steel pedestal, (6) dining chairs w/cushions • Large stainless steel glass door into salon • Center staircase down to swim platform to lazarette & engine room • New teak decks (2011) • Stainless steel handrails • Open freeing ports • Samsung 32" LCD TV Bose stereo speakers • Elbex remote closed circuit TV camera • Maxwell 4000 vertical warping windlass w/flush mounted foot switches • Stainless steel gate to port for passarelle boarding • Freeman hatch serving the aft engine room, lazarette & engineers cabin emergency escape hatch • Teak overlay treads w/deck level lights & s/s hand rail up to boat deck • Recessed halogen down lights • Centerline stainless steel gates to the transom steps • Swim platform w/stainless hand railing, removable s/s stanchions, hydraulic

passarelle w/teak steps, tender cleats & spotlights

---

## Deck Equipment

---

• (2) Marquipt 1500lb low profile davits w/new canvas cover • Marquipt custom hydraulic passarelle w/teak overlay decking • (2) Poole 260 lb anchor systems w/350' chain (serviced 2011) • Maxwell 11000 hydraulic windlass w/vertical capstans • New teak overlay decks on foredeck (2011) • New caprails (2011) • Settee w/upholstered cushions, Corian table w/pedestal base & covers • Recessed halogen lighting • Freeman escape hatch • Freeing ports • Stainless steel removable railings • New complete exterior paint in 2011 at Rybovich • Haul & bottom job Oct. 2012

---

## Lazarette

---

The lazarette is located aft of the control room and is accessed from the starboard side transom through a watertight door. There is an emergency escape hatch to the main aft deck with ladder. • Emergency steering station w/main engine start/stop switches Caterpillar alarm panels, Raytheon gyro repeaters, Kobelt rudder angle indicator, emergency throttles, Kobelt gear controls • Stainless steel vertical swim ladder • Stainless steel escape ladder • Atlas shorepower frequency converter • Glendinning shore cord system w/storage • Marine air conditioning chill water air handler • Atlas smart box • Craftsman 14-drawer tool chest • (12) Dryfit batteries • Tide ride 7-step ladder • Emergency fire station • Handheld shower Workbench w/vice • Kidde fire suppression system • Freshwater tank, 1111 gallon • HPU steering system • Panasonic phone system • Passarelle stanchion

---

## Electrical System

---

• Twin Northern Light 99KW generators w/sound shields • Generator hours: Port 3412; Stbd gen hours: 3505 - Aug 28, 2014 • Mastervolt battery charger MASS24/100 • (2) Mastervolt battery chargers MASS24/50 • Atlas 75KVA shore power system • Atlas shorepower Smartbox • (2) Glendinning 100 amp, 208v, 3-phase • (4) 24V Gel cell batteries • 72-point Alarm system w/pilothouse & engine room panels

---

## Engine/Mechanical Equipment

---

• Twin Caterpillar 3512B main engines, 2250 HP. Extended Caterpillar warranty available for renewal to new owner. Engine hours: Port - 6468 Starboard - 6472 as of Aug 28, 2014 • (2) FCI Dolphin 1600 GPD watermakers (fully serviced 2011) • Naiad HPS hydraulic 505 stabilizers • Naiad hydraulic 20L bow thruster • Twin ZF BW465 reversing gears • Marine Air chill water air conditioning system, 36-tons • DeAngelo Marine exhaust system • Racor 1000 fuel water separators (new 2012) • Racor crankcase ventilation system • Balor AC fuel transfer pump •

Leeson DC fuel transfer pump • Alpha Laval fuel centrifuge • Automatic bilge/fire pump system w/emergency bilge manifold system • Manual FM200 fire suppression system • High water bilge alarm • (2) Lovett automatic 24v bilge pumps • Oberdorfer lube oil pump • (2) 24" Engine room ventilation supply fans w/fire dampers • 24" Engine room exhaust fan w/fire damper • Delta T engine room blowers w/ventilation control pad • (3) Toshiba variable speed for ventilation fans • Stainless steel fuel supply manifold & priming manifold • Headhunter Tidal Wave black water treatment center • Quincy 310 air compressor • (2) Lochinva 80 gallon hot water heaters • (2) Headhunter Sub Paq water pumps • Integral 400 gallon fuel day tank • (3) Prozone black water ozone machines • Prozone gray water ozone machine • Elbex CCTV camera • (2) 12" VEI LCD monitors • Stainless steel workbench w/storage cabinets below • (12) Dive tank storage racks • (8) Rod holders • 4-Drawer file cabinet

## Maintenance & Upgrades

---

• Main engines completed service by FDDA • Engine oil & fuel filters changed • New fuel filters changes (2012) • Injectors changed on generators (2013) • Generators: Oil & filter changes done every 200 hrs • Injectors changed & valves adjusted in both gens (2011) • Electrical end of both port & stbd gens removed & re-wound (2012) • Thru hulls & associated cooling lines dismantled & flushed to remove growth • Zincs & impellers changed routinely • Both watermakers fully serviced (2011) • Davit: Full service including line & sheave changed (2011) • Stabilizers: Seals replaced & stbd cylinder replaced & valves checked • Fire System: Triangle fire certified all fire systems • Ultra mist system services & re-certified • Liferafts: Annual service performed (2012) • New A/C handlers throughout vessel (2013) • Complete Awlgrip paint job at Rybovich (2011) • Bottom job Oct. 2012

## Exclusions

---

All owner's and crew personal items.

## Remarks

---

**LADY M**, is a 2002, 45m / 147' Intermarine motoryacht that was refit in 2011. This beautiful vessel is built to ABS Maltese Cross 100-A1 Classification. She has been described as the "ultimate cruising yacht". Powered by reliable 3512 Caterpillar engines, she cruises comfortably at 15 knots with a 17.5 knot top end speed. Holding almost 12,000 gallons of fuel, she has transatlantic capability and provides stabilized comfort. Her refit in 2011 included a brand new paint job at Rybovich Shipyard, and an interior refit featuring honey glazed, maple joinery, all new marble, granite, carpeting, flybridge seating arrangement, 3D flat screen TV's, and updated equipment. **LADY M's** layout includes a classic main salon with a grand piano, a formal dining salon for ten, skylounge with bar, lower and upper aft decks that provides for al fresco dining, and a spacious flybridge with Jacuzzi.

---

## Исключения

---

При продаже яхты исключаются личные вещи владельца.

---

## Отказ от ответственности

---

Компания предоставляет описание судна или яхты добросовестно, но не может гарантировать точность этой информации, а также не ручается за техническое состояние. Покупатель должен проинструктировать своих агентов или оценщиков исследовать представленную информацию более подробно, по собственному желанию. Продажа судна или яхты, изменение цены или снятие с продажи будет происходить без предварительного уведомления.

# ФОТОГРАФИИ

**Aft Deck**



**Main Salon**



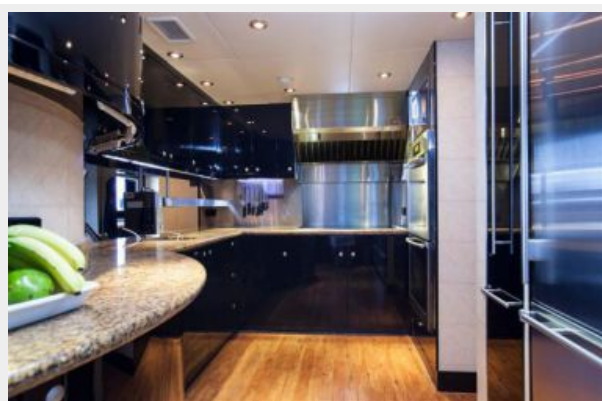
**Dining**



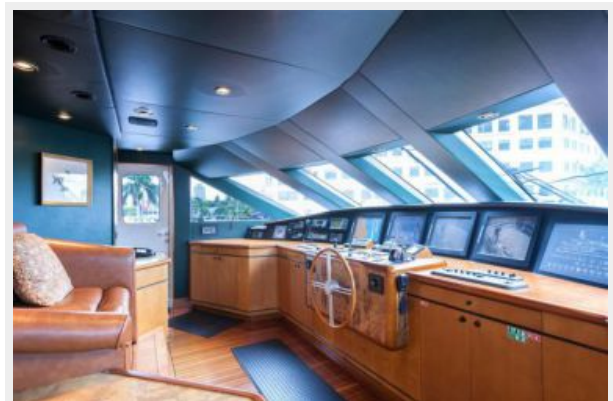
**Galley**



**Galley**



**Wheelhouse**





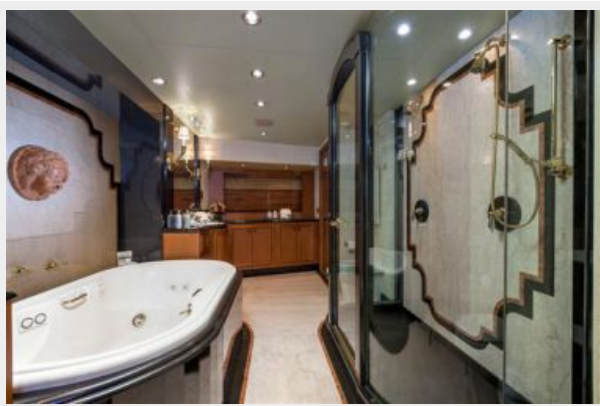
**Master**



**Master**



**Master bath**



**Guest**



**Guest head 1**



**Guest**



**Guest head 2**



**Guest**



**Guest head 3**



**Guest**



**Crew Galley**



**Skylounge**





Upper Deck Aft

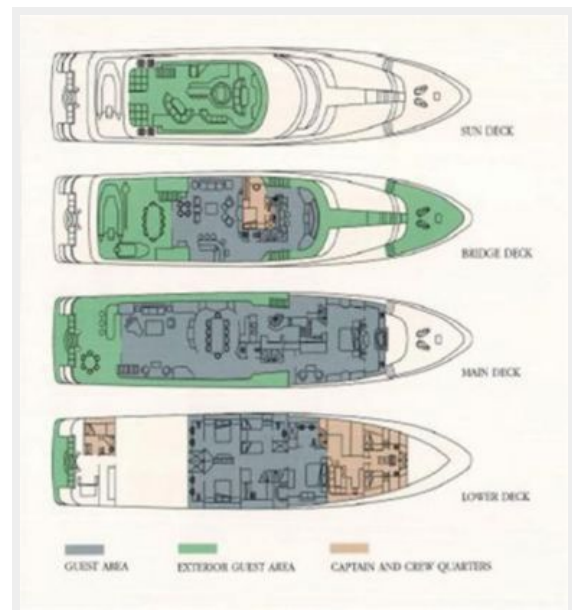


Sun Deck



GA

Sun Deck



# КОНТАКТЫ

---

Андрей Шестаков (Andrey Shestakov) – ведущий яхтенный брокер отдела продаж яхт и судов компании Shestakov Yacht Sales Inc. Официальный представитель Shestakov Yacht Sales Inc. для русскоговорящих клиентов в центральном офисе компании в Майами/Форт Лодердейл/Флорида/США.

## Контактная информация

---

Email: [andrey@shestakovyachtsales.com](mailto:andrey@shestakovyachtsales.com)

Web: [shestakovyachtsales.com](http://shestakovyachtsales.com)

## Телефоны

---

Краснодарский край: **+7(918)465-66-44**

США, Майами, Флорида: **+1(954)274-4435**

## Время работы

---

Понедельник – Суббота: **9:00 - 21:00**  
EDT

Воскресенье: **Закрето**

## Адрес

---



Harbour Towne Marina, 850 NE 3rd St,  
STE 213, Dania, FL 33004