

PERSHING 52 — PERSHING



Builder: PERSHING

Year Built: 2003

Model: Cruiser

Price: PRICE ON APPLICATION

Location: Italy

LOA: 52' 0" (15.85m)

Beam: 15' 5" (4.70m)

Max Draft: 3' 10" (1.17m)

Our experienced yacht broker, Andrey Shestakov, will help you choose and buy a yacht that best suits your needs **Pershing 52 — PERSHING** from our catalogue. Presently, at Shestakov Yacht Sales Inc., we have a wide variety of yachts available on our sale's list. We also work in close contact with all the big yacht manufacturers from all over the world.

If you would like to buy a yacht **Pershing 52 — PERSHING** or would like help answering any questions concerning purchasing, selling or chartering a yacht, please call **+1(954)274-4435**

TABLE OF CONTENTS

TABLE OF CONTENTS	2
SPECIFICATIONS	3
Overview	3
Basic Information	3
Dimensions	4
Speed, Capacities and Weight	4
Accommodations	4
Hull and Deck Information	4
Engine Information	4
PHOTOS	5
CONTACTS	7
Contact details	7
Telephones	7
Office hours	7
Address	7

SPECIFICATIONS

Overview

Overall very good condition . Owner Motivated and ready for a quick sale ! Bring Offers ! Well maintained and in covered winter storage every year . Tender included ! For Further Info Call Mark !

Atlantic Yacht and Ship is America's oldest and most respected supplier of power & custom motor yachts. We specialize in the brokerage of quality Motor Yachts, Sport Fisherman, Express Cruisers, and Trawlers. Incorporated in 1959, with over 53 years of continued service within the yachting industry and community, Atlantic Yacht and Ship is committed to providing unparalleled product knowledge and meticulous attention to detail.

Our services include : Brokerage , Charters, New Construction , Surveys and Sea Trials, CE Certification ,Worldwide Yacht Transport, Yacht Transfers, Maintenance and Service , Dockage, Electrical Power Conversions, Marine Documentation , Offshore Registration, Finance and Insurance.

Atlantic Yacht and Ship Italy Office

Mark Meyer Authorized Representative

Marina Cala Galera Ste 15

Porto Ercole , Italy 58018

ITALY + 39 346 95 90 673

USA + 1 305 677 9137

Basic Information

Category: Cruiser

Sub Category: Express

Model Year: 2003

Year Built: 2003

Country: Italy

Dimensions

LOA: 52' 0" (15.85m)

Beam: 15' 5" (4.70m)

Max Draft: 3' 10" (1.17m)

Speed, Capacities and Weight

Displacement: 52800 Pounds

Water Capacity: 159 Gallons

Fuel Capacity: 713 Gallons

Accommodations

Total Cabins: 3

Total Heads: 3

Hull and Deck Information

Hull Material: Fiberglass

Engine Information

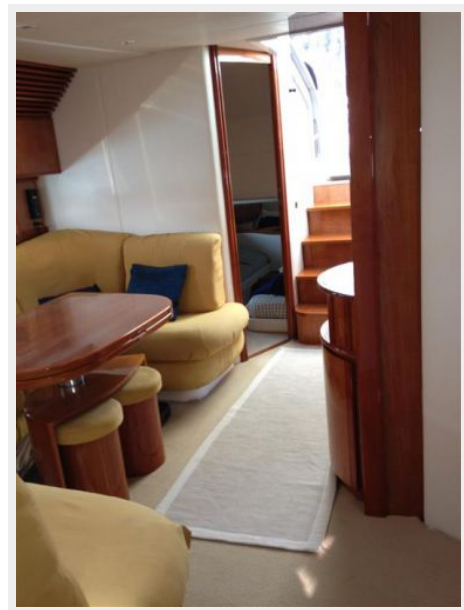
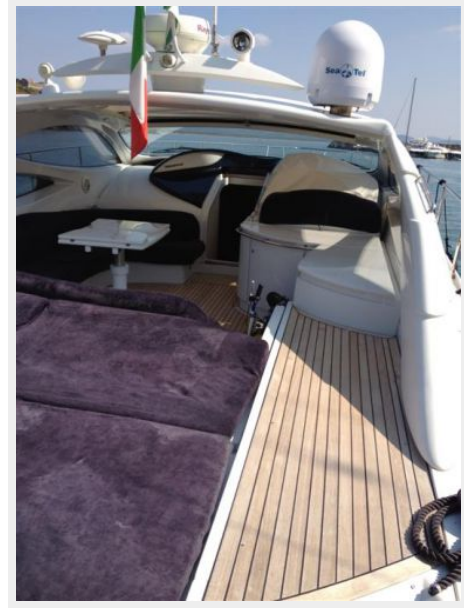
Manufacturer: MAN

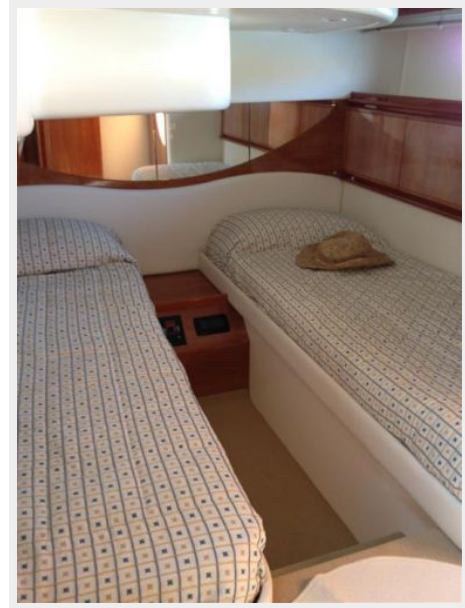
Model: 1050

Engine Type: Inboard

Fuel Type: Diesel

PHOTOS





CONTACTS

Andrey Shestakov, leading yacht broker of the sales department of Shestakov Yacht Sales Inc. Shestakov Yacht Sales Inc., the official representative of the Miami/Fort Lauderdale FL headquarters.

Contact details

Email: andrey@shestakovyachtsales.com

Web: shestakovyachtsales.com/en/

Telephones

USA: +1(954)274-4435

Office hours

Monday – Saturday: **9:00 - 21:00** EDT

Sunday: **closed**

Address



Harbour Towne Marina, 850 NE 3rd St,
STE 213, Dania, FL 33004