

ENTREPRENEUR — BROWARD



Судостроитель: BROWARD

Год постройки: 2004

Модель: Моторная яхта

Цена: ЦЕНА ЯХТЫ ПО ЗАПРОСУ

Местонахождение: United States

Длина общая: 110' 0" (33.53m)

Ширина: 20' 0" (6.10m)

Макс. осадка: 6' 0" (1.83m)

Крейс. скорость: 16 Kts. (18 MPH)

Макс. скорость: 22 Kts. (25 MPH)

Купить **ENTREPRENEUR — BROWARD** а также выбрать подходящую вам яхту из нашего каталога яхт вам поможет опытный яхтенный брокер Андрей Шестаков. На сегодняшний день компания Shestakov Yacht Sales Inc. имеет большое количество яхт в собственном списке продаж, а также тесно сотрудничает со всеми крупными яхтенными производителями по всему миру.

Для того чтобы купить яхту **ENTREPRENEUR — BROWARD** а также проконсультироваться по любому вопросу связанному с покупкой, продажей, чартером яхт позвоните по телефону **+7(918)465-66-44**.

ОГЛАВЛЕНИЕ

ОГЛАВЛЕНИЕ	2
ХАРАКТЕРИСТИКИ	3
Обзор	3
Основная информация	3
Размеры	4
Скорость, вместимость и масса	4
Размещение	4
Корпус и палуба	4
Информация о двигателе	5
ПОДРОБНОЕ ОПИСАНИЕ	6
Machinery	6
Communications, Navigation & Entertainment	6
Galley & Laundry Equipment	6
Tenders & Toys	7
Deck Equipment	7
Security, Fire Fighting & Safety Equipment	7
Acommodations	7
Исключения	8
Отказ от ответственности	8
ФОТОГРАФИИ	9
КОНТАКТЫ	16
Контактная информация	16
Телефоны	16
Время работы	16
Адрес	16

ХАРАКТЕРИСТИКИ

Обзор

With a combination of old world charm and exquisite naturally finished cherry woodwork, Entrepreneur is easily one of the youngest Broward's available at present.

Covered aft deck offers a table with seating for eight (8). Port and starboard stairways lead to the swim platform. There is transom access to the crew's quarters, which have accommodations for 4-5 including a private captain's cabin and crew mess area.

The Engine Room access is from the crew's quarters. Enter the main salon from the aft deck through sliding glass doors. The full-beam salon has cherry wood paneling and formal dining forward with seating for eight (8).

Access to the staterooms is forward to port and there is an on-deck day head to starboard. The "country kitchen" style galley is forward and has an informal dining settee to port and companionway leading to the VIP stateroom to starboard. The raised pilothouse can be accessed from both port and starboard. The master stateroom is full-beam amidship with centerline King-size bed and His & Her Baths featuring a custom "walk-by" shower. There are 2 guest staterooms both with ensuite head and shower. The port guest stateroom has a queen size bed and there are twin berths in the starboard stateroom. The VIP stateroom is very private with separate entry forward of the galley. It has a centerline king-size bed and ensuite bath with shower. All staterooms have entertainment centers, ample storage and cedar-lined closets.

The hardtop to flybridge can be accessed both from the aft deck or the pilothouse. This is an especially comfortable area with banquette seating surrounding a table for ten (10). There is a professional-grade stainless steel grill with rotisserie, wet bar, Jacuzzi and sun pad area. Forward is a fully equipped helm & wing stations. Tenders are aft. 1/5 Shares Available, Call for Details

Основная информация

Тип судна: Моторная яхта

Подкатегория: Flybridge

Модельный год: 2004

Год постройки: 2004

Страна: United States

Открытая палуба мостика: Да

Размеры

Длина общая: 110' 0" (33.53m)

Длина по ватерлинии: 93' 0" (28.35m)

Ширина: 20' 0" (6.10m)

Макс. осадка: 6' 0" (1.83m)

Скорость, вместимость и масса

Крейс. скорость: 16 Kts. (18 MPH)

Крейсерская скорость поворота: 1850 Kts.

Дальность на крейсерской скорости: 1900

Макс. скорость: 22 Kts. (25 MPH)

Макс. скорость поворота: 2300 Kts.

Чистый вес: 1 Pounds

Вместимость воды: 1200 Gallons

Объем топливного бака: 9500 Gallons

Размещение

Всего кают: 4

Спальные места: 8

Каюта капитана: Да

Каюты экипажа: 3

Койки экипажа: 5

Спальных мест экипажа: 6

Корпус и палуба

Материал корпуса: Aluminum

Цвет корпуса: Blue

Дизайнер корпуса: Donald L. Blount & Associates

Дизайнер экстерьера: Donald L. Blount & Associates

Дизайнер интерьера: Luiz de Basto Designs

Информация о двигателе

Двигатели: 2

Производитель: Caterpillar

Модель: 3412E

Тип двигателя: Inboard

Тип топлива: Diesel

ПОДРОБНОЕ ОПИСАНИЕ

Machinery

• Engines: (2) Caterpillar 3412 @ 1,350 Hp each • Gearboxes for Main ZF BW195; Ratio: 2.571:1
 • Drive: Propeller Generators & Electricity: • Output: 220 V; Phase: 1; 60 Hz • Generators: (2) 60Kw Northern Lights generators • Generator Fuel 100 GPD • Shore Power: (2) 220V, 100 amp, single phase, 60Hz • Batteries: (2) 24V battery banks (charger & alternator) • (2) 12V battery banks (charger & alternator) • Emergency: 12V (charger) Air Conditioning: • Type: Aqua Marine; 15-ton; 13 handling units Other Machinery: • Watermakers: 1,200 GPD Sea Recovery • Stabilizers: Trac Digital Stabilizers • Bow Thruster: American - 16" • Steering System: Hynautic w/ power assist • Fuel Separator & Filtration: Mains: (3) Racor 1000 • Gens: Racor 500 • Sewage System: Headhunter Heads; Holding Tank • Fresh Water System: (2) Headhunter Mach 5 Miscellaneous: • Delta T-systems engine room ventilation • Yacht Mate freshwater filter • UV sterilizer on freshwater system

Communications, Navigation & Entertainment

Communication Systems: • SATcom: KVH TracPhone w/ Fleet 55 voice & data • Telephone System: Panasonic KX-T7730 w/ 12 extensions • VHF: (2) Icom M-127 VHF radios (Flybridge & Pilothouse) • Cellular Phone System: Yes • Intercom: Off ships phone system Miscellaneous: (6) Standard Horizon hand held radios G-8 Trac Vision Satellite TV Navigation Systems: • Radar: (1) Furuno 72 mile radar • (1) Furuno 1954 64 mile radar w/ plotter overlay • Magnetic Compass: 6" Danforth (Pilothouse) • Auto Pilot: Simrad Robertson AP20 w/ FB handheld remote • Depth Sounder: (2) B & G Hydra 20/20 (Flybridge & Pilothouse) • GPS: (2) Furuno C-Map 1954 (Flybridge & Pilothouse) • (1) Northstar 951 (Flybridge) • Ships Computer: Laptop Computer with HP 1610 multifunction printer • Plotter: (3) Furuno 1954 w/ C-Map Entertainment System: a. Video Equipment: • TV's: (1) 50" Panasonic HDTV (Salon) • (1) 50" Phillips Flatscreen (Master) • (2) 21" Sharp Aquos (VIP, Galley) • (2) 15" Sharp Aquos (Port & Starboard Guests) • (1) 15" Toshiba w/ VCR (Crew) • VCR: (1) Sony SLV-N900 VCR (Salon) • DVD/CD: (1) Sony DVP-NC85H (Interior) • (1) Sony DVP-NC68511 (Exterior) • X-Box Video gaming console b. Audio Equipment: • (1) Integra DTC-9.4 Home Theatre (Salon) • (1) Bose Wave (Master) • (3) Pioneer DVN-P5000MP (VIP, Port & Starboard Guests) • Sonance Distributed Audio Systems with touchpads throughout yacht c. Satellite TV KVH TracVision G-8

Galley & Laundry Equipment

Main Galley Equipment: • Cooking Equipment: Stove: Kitchen-Aid 5 burner • Oven: Kitchen-Aid • Refrigeration/Freezer: Jennair side-by-side • (2) Sub Zero refrigerators • (2) Sub Zero freezers • Dishwasher: Jennair • Other: (2) U-Line Icemakers (Galley & Flybridge) • (1) Manitowok Icemaker (Aft deck) • (1) Whirlpool trash compactor • Crew Galley/Mess • Cooking Equipment: Microwave: Magic Chef • Refrigeration/Freezer: True . size; U-Line Fridge; Subzero Freezer Additional

Galley Equipment: • Cooking Equipment: Barbecue: Grand Turbo S.S. propane (Flybridge) • Other: Wine Cooler: U-Line Laundry Equipment: • Main Laundry Equipment Washer: (1) Maytag Large Commercial (Guest) • Dryer: (1) Maytag Large Commercial (Guest) • Washer: (1) Maytag Large Capacity (Crew) • Dryer: (1) Maytag Large Capacity (Crew)

Tenders & Toys

Tenders: • 15.5' Nautica with Yamaha 90Hp outboard • 3-person Yamaha Waverunner • Dive Gear: Snorkel equipment Other: • (2) 2-person glass bottom Kayaks • Waterskis • Tow toys • Assorted beach toys

Deck Equipment

• Anchor Windlass System: Maxwell 3500 w/ chain gypsy & capstan • Anchors: Navy Style • Anchor Chain: 1/2" x 300' • Boat Crane and Davits: Nautical Structures Euro 2500 • Swimming Platform: w/ ladder Other: • Jacuzzi • 8-step Marquipt Sea Stairs • Marquipt tide rise ladder • ACR spotlight • Flybridge hardtop with enclosure

Security, Fire Fighting & Safety Equipment

Security Equipment: • CCTV System: ELBEX • Cameras: (4) (Port & Starboard side decks, engine room & aft deck) • Monitors: (2) Flybridge & Pilothouse Fire Fighting Equipment: • Fire Control System: Kidde halon substitute • Fire Extinguishers: Handheld throughout • Alarms: Throughout Safety Equipment: • Life Rafts: (2) Switlik 10 man • Life Rings: (2) • EPIRBs: ACR 406 MHz • Flares: Full US Coast Guard safety package

Acommodations

Covered aft deck offers a table with seating for eight (8). Port and starboard stairways lead to the swim platform. There is transom access to the crew's quarters, which have accommodations for 4-5 including a private captain's cabin and crew mess area. The Engine Room access is from the crew's quarters. Enter the main salon from the aft deck through sliding glass doors. The full-beam salon has cherry wood paneling and formal dining forward with seating for eight (8). Access to the staterooms is forward to port and there is an on-deck day head to starboard. The "country kitchen" style galley is forward and has an informal dining settee to port and companionway leading to the VIP stateroom to starboard. The raised pilothouse can be accessed from both port and starboard. The master stateroom is full-beam amidship with centerline King-size bed and His & Her Baths featuring a custom "walk-by" shower. There are 2 guest staterooms both with ensuite head and shower. The port guest stateroom has a queen size bed and there are twin berths in the starboard stateroom. The VIP stateroom is very private with separate entry forward of the galley. It has a centerline king-size bed and ensuite bath with

shower. All staterooms have entertainment centers, ample storage and cedar-lined closets. The hardtop to flybridge can be accessed both from the aft deck or the pilothouse. This is an especially comfortable area with banquette seating surrounding a table for ten (10). There is a professional-grade stainless steel grill with rotisserie, wet bar, Jacuzzi and sun pad area. Forward is a fully equipped helm & wing stations. Tenders are aft.

Исключения

При продаже яхты исключаются личные вещи владельца.

Отказ от ответственности

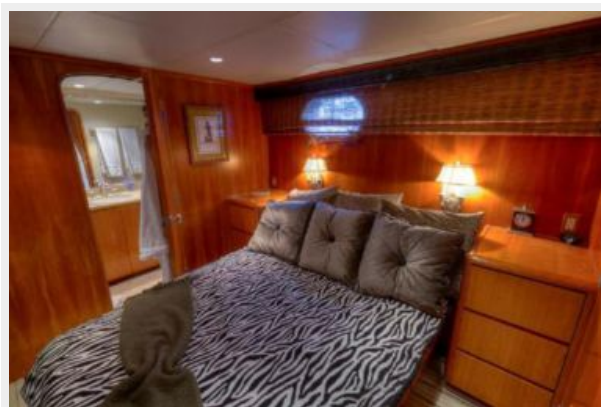
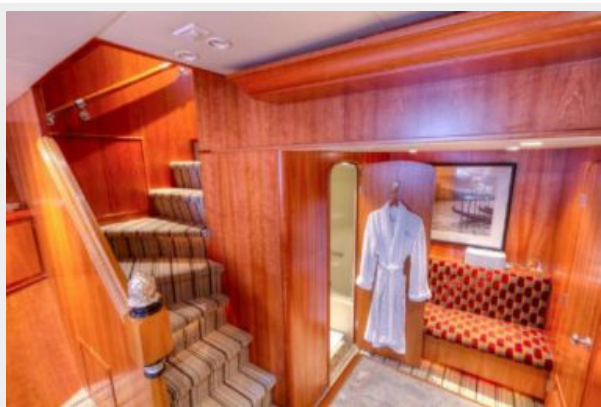
Компания предоставляет описание судна или яхты добросовестно, но не может гарантировать точность этой информации, а также не ручается за техническое состояние. Покупатель должен проинструктировать своих агентов или оценщиков исследовать представленную информацию более подробно, по собственному желанию. Продажа судна или яхты, изменение цены или снятие с продажи будет происходить без предварительного уведомления.

ФОТОГРАФИИ



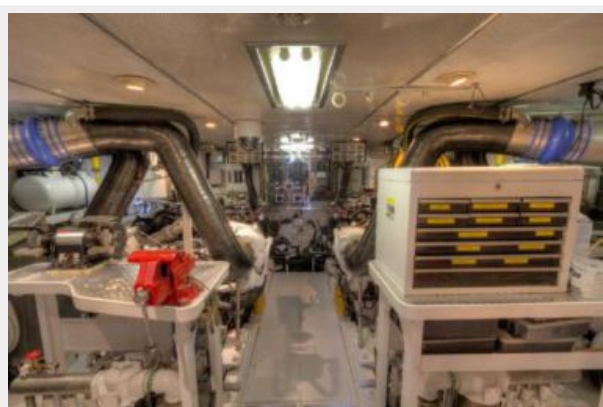












КОНТАКТЫ

Андрей Шестаков (Andrey Shestakov) – ведущий яхтенный брокер отдела продаж яхт и судов компании Shestakov Yacht Sales Inc. Официальный представитель Shestakov Yacht Sales Inc. для русскоговорящих клиентов в центральном офисе компании в Майами/Форт Лодердейл/Флорида/США.

Контактная информация

Email: andrey@shestakovyachtsales.com

Web: shestakovyachtsales.com

Телефоны

Краснодарский край: **+7(918)465-66-44**

США, Майами, Флорида: **+1(954)274-4435**

Время работы

Понедельник – Суббота: **9:00 - 21:00**
EDT

Воскресенье: **Закрито**

Адрес



Harbour Towne Marina, 850 NE 3rd St,
STE 213, Dania, FL 33004