

CAREY'N ON — OCEAN YACHTS



Builder: [Ocean Yachts](#)

Year Built: 1999

Model: Sport Fisherman

Price: PRICE ON APPLICATION

Location: United States

LOA: 40' 4" (12.29m)

Beam: 14' 2" (4.32m)

Min Draft: 3' 8" (1.12m)

Cruise Speed: 23 Kts. (26 MPH)

Max Speed: 30 Kts. (35 MPH)

Our experienced yacht broker, Andrey Shestakov, will help you choose and buy a yacht that best suits your needs **Carey'n On — Ocean Yachts** from our catalogue. Presently, at Shestakov Yacht Sales Inc., we have a wide variety of yachts available on our sale's list. We also work in close contact with all the big yacht manufacturers from all over the world.

If you would like to buy a yacht **Carey'n On — Ocean Yachts** or would like help answering any questions concerning purchasing, selling or chartering a yacht, please call **+1(954)274-4435**

TABLE OF CONTENTS

TABLE OF CONTENTS	2
SPECIFICATIONS	5
Overview	5
Basic Information	5
Dimensions	5
Speed, Capacities and Weight	5
Accommodations	6
Hull and Deck Information	6
Engine Information	6
DETAILED INFORMATION	7
Accommodations	7
Salon	7
Boat Highlights	7
Electronics	8
Galley	8
Audio & Visual Equipment	8
Master Stateroom	8
Master Head	8
Mechanical	8
Tenders	8
Safety & Fire Protection	8
Bow & Stern	8
Aft Deck	9
Fishing Equipment	9
Exclusions	9
Disclaimer	9
PHOTOS	10
Sister Ship underway	10

Sister Ship underway	10
Tuna tower	10
Aft fighting deck	10
Bait prep station and engine entry door	10
Raised helm deck with new isinglass	10
Tuna tower with Marlin station	11
Marlin station	11
Aft fighting deck	11
Bow deck	11
Starboard gunwhale	12
Bow deck	12
Anchor pulpit and EZ Anchor retrieval system	12
Looking aft from bow deck	12
Port bow deck	13
Seating in raised helm station	13
Seating in raised helm station	13
Adjustable helm chairs	13
Helm station	13
Upper electronics boxes	13
Bait prep station	14
Rod storage	14
Rod storage	14
Rod storage	14
Guest stateroom port bunk	14
Guest stateroom starboard bunk	14
Guest stateroom hanging closet	15
Guest stateroom hanging closet	15
L-shaped settee in salon	15
Chair and ice maker in salon	15

Microwave and sink in galley	15
Sink and double burner stove in galley	15
Refrigerator/freezer in galley	16
Passage forward to master stateroom	16
Head	16
Vanity in head	16
Head	17
Master stateroom	17
Hanging closet in master stateroom	17
Master stateroom door leading to head	17
Entertainment center	18
Door leading into engine room	18
Engine room	18
Engine room	18
Engine room	18
Engine room	18
Engine room	19
Generator in engine room	19
CONTACTS	20
Contact details	20
Telephones	20
Office hours	20
Address	20

SPECIFICATIONS

Overview

1999 40' Ocean Sport Fish/Express powered by twin Caterpillar 3126TA diesels, Westerbeke 7.5KW generator, Tuna Tower with Marlin station, Rupp Outriggers. The Carey'n On has been a family fishing and get away for vacation boat. Original owner has every maintenance record and receipts since purchase. She has very low hours on the Cats (1122) and the generator (550). Kids are off to college and boat is not used as much so Owner wants it sold. All serious offers will be considered.

Basic Information

Category: Sport Fisherman

Sub Category: Express

Model Year: 1999

Year Built: 1999

Country: United States

Vessel Top: 2359

Dimensions

LOA: 40' 4" (12.29m)

Beam: 14' 2" (4.32m)

Min Draft: 3' 8" (1.12m)

Speed, Capacities and Weight

Cruise Speed: 23 Kts. (26 MPH)

Cruise Speed RPM: 2200 Kts.

Cruise Speed Range: 299

Max Speed: 30 Kts. (35 MPH)

Max Speed RPM: 2800 Kts.

Displacement: 26500 Pounds

Water Capacity: 90 Gallons

Fuel Capacity: 390 Gallons

Fuel Consumption: 27 Gallons

Accommodations

Total Cabins: 2

Total Berths: 3

Sleeps: 5

Total Heads: 1

Hull and Deck Information

Hull Material: Fiberglass

Hull Configuration: Planing

Hull Color: White

Engine Information

Engines: 2

Manufacturer: Caterpillar

Model: 3126TA

Engine Type: Inboard

Fuel Type: Diesel

DETAILED INFORMATION

Accommodations

This lightly used 1999 40' Ocean Sport Fish/Express powered by twin Caterpillar 3126's has been meticulously maintained with an open check book by the original owner, who has receipts for everything since the original purchase. Boarding is accomplished by stepping onto the wide gunwhale and onto the very large aft cockpit deck. You are surrounded by gunwhale coaming pads, a transom live bait well, on forward port bulkhead a complete tackle center with five shelves with tackle locker, fresh and salt water wash downs, and insulated ice chest. Moving forward and up is the raised helm deck, which has a centerline helm behind the windshield for maximum visibility, hard top with two overhead electronics consoles, adjustable helmsman and companion chairs, along with lounge seats and lockers. The raised helm area is air conditioned by a separate 16000btu unit. The helm deck is surrounded in new isinglass enclosure. Moving forward to the starboard of the helm is the access to the down salon. This elegant salon is enriched with teak cabinetry and trim, a standard L-lounge, upholstered chair, high-gloss hi-low table, ice maker and complete entertainment center enhances comfort during extended fishing trips or dockside entertainment. Forward on the port side is the galley which has a microwave oven, two-burner range, Corian countertop and over sized sink, refrigerator/freezer combo and instant hot water dispenser. The surprisingly roomy Master Stateroom is forward featuring a double bed with hidden storage, cedar hanging locker, clothing drawers, and overhead ventilation hatch. The head has a fully enclosed shower, electric toilet, a mirrored vanity with sink and Corian top, vinyl flooring and a raised teak entrance door. Moving aft of the main salon is the Guest stateroom where three guests can sleep comfortably in double and single berths. A hanging cedar locker, clothes drawers and a large mirror contribute to their well being. Moving aft to the cockpit and up the full tower is the marlin station with full vessel operational control box, Rupp standoff sand spreader lights. Access to the forward bow deck is easily made by walking forward on the wide gunwhales and utilizing the hand rail. The bow deck has bow rails, built in bow pulpit and a windlass. Owner is motivated to sell, all serious offers will be entertained.

Salon

L-shaped sofa with storage under seats 1 Swivel rocker chair Coffee table Bar area with Ice Maker Central vacuum

Boat Highlights

Raised air conditioned helm with new isinglass enclosure L-shaped sofa with storage under seats Bench seat with storage 2 adjustable helmsman chairs Overhead zippered canvas life jacket storage areas (3 areas)

Electronics

Robertson AP-20 Auto-Pilot Simrad EQ-32 Sounder Simrad RA-42 Radar Simrad GPS
Chartplotter Icom IC-302 VHF Radio

Galley

Princess two burner stove Microwave Uline refrigerator/freezer Instant hot water at sink

Audio & Visual Equipment

Clarion AM/FM CD player Cyber Home DVD 300 DVD player 13" Color TV

Master Stateroom

Queen bed Storage under bed Cedar lined hanging closet Clothing drawers Overhead hatch

Master Head

Separate enclosed shower Mirrored vanity with sink and Corian top

Mechanical

Twin Cat 3126 420hp Diesel engines 1122 hours Westerbeke 7.5KW generator 550 hours
Engine Synchronizers Oil Xchange system Dripless Shafts 2 - 16000BTU Air Conditioning units,
living area and for raised helm area

Tenders

10' Zodiac inflatable boat Nissan 9.8 hp outboard motor

Safety & Fire Protection

Winslow 6 person life raft Engine room automatic fire suppression system

Bow & Stern

Bow-anchor pulpit EZ Anchor Puller

Aft Deck

Coaming Pads Fresh and Salt water wash down In deck Ice hold In deck fish box with macerator
Transom livewell Transom door with swim ladder Bait prep station with sink and fresh water Bait
Freezer and drink cooler 2 Tackle storage areas with 5 drawers 3 Rod storage areas 2-12 Volt
plugs for electric reels

Fishing Equipment

Rupp Outriggers Penn fishing rods, reels, snapper, bottom fish Electric deep drop reel

Exclusions

Owner's personal belongings.

Disclaimer

The Company offers the details of this vessel or yacht in good faith but cannot guarantee or warrant the accuracy of this information nor warrant the condition of the vessel. A buyer should instruct his representatives, agents, or his surveyors, to investigate such details as the buyer desires validated. This vessel or yacht is offered subject to prior sale, price change, or withdrawal without notice.

PHOTOS

Sister Ship underway



Sister Ship underway



Tuna tower



Aft fighting deck



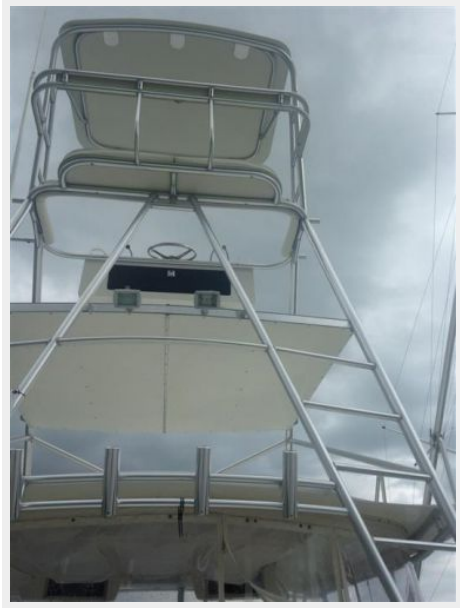
Bait prep station and engine entry door



Raised helm deck with new isinglass



Tuna tower with Marlin station



Marlin station



Aft fighting deck



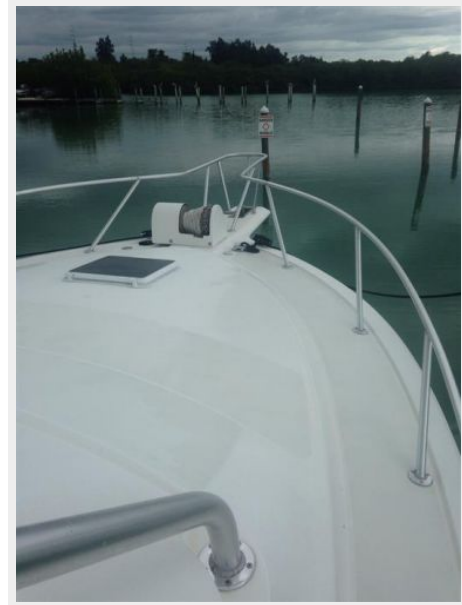
Bow deck



Starboard gunwhale



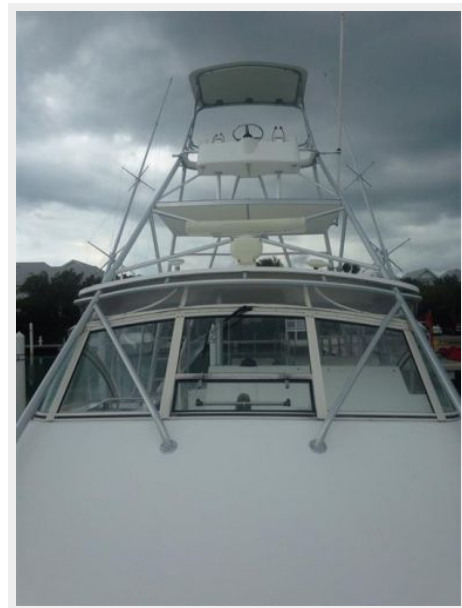
Bow deck



Anchor pulpit and EZ Anchor retrieval system



Looking aft from bow deck



Port bow deck



Seating in raised helm station



Seating in raised helm station



Adjustable helm chairs



Helm station



Upper electronics boxes



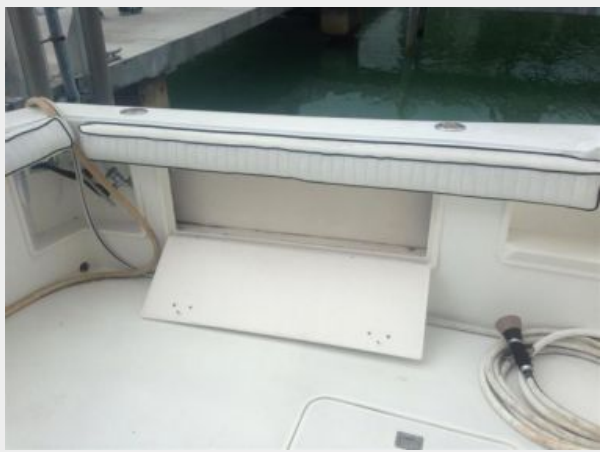
Bait prep station



Rod storage



Rod storage



Rod storage



Guest stateroom port bunk



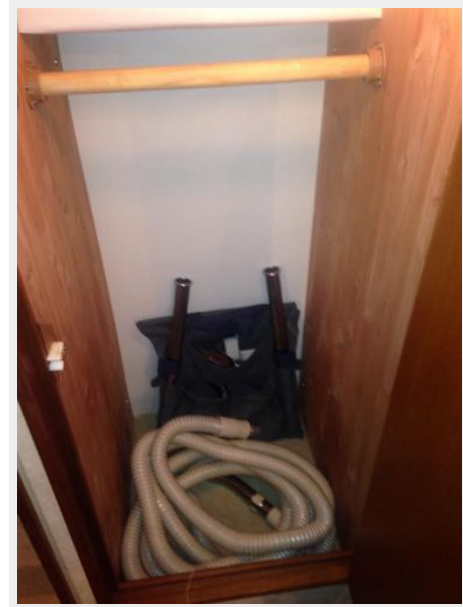
Guest stateroom starboard bunk



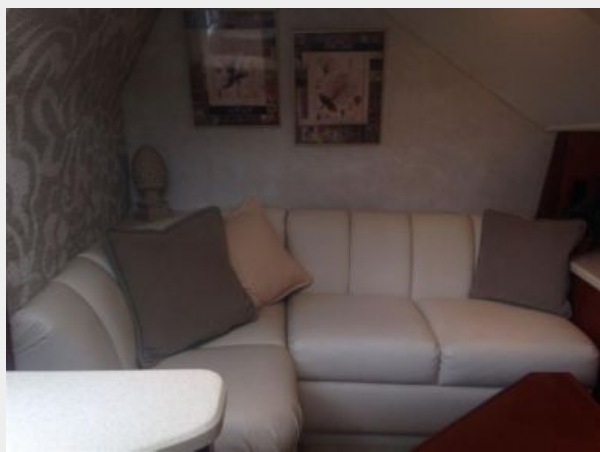
Guest stateroom hanging closet



Guest stateroom hanging closet



L-shaped settee in salon



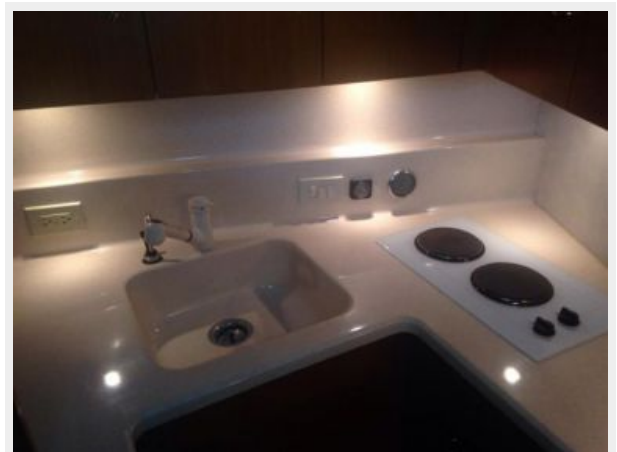
Chair and ice maker in salon



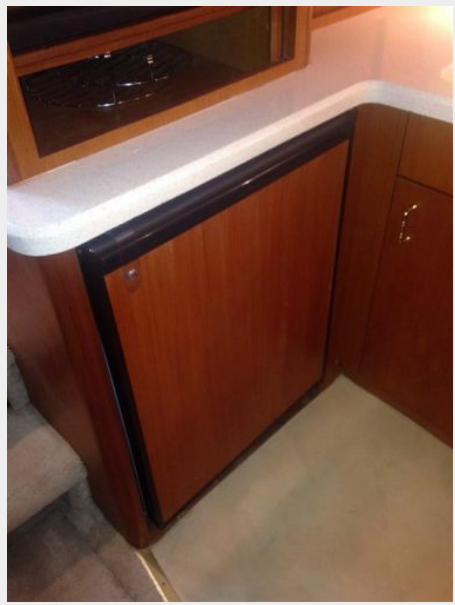
Microwave and sink in galley



Sink and double burner stove in galley



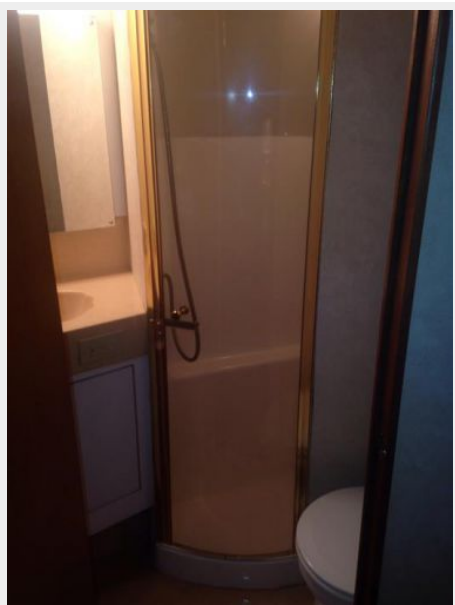
Refrigerator/freezer in galley



Passage forward to master stateroom



Head



Vanity in head



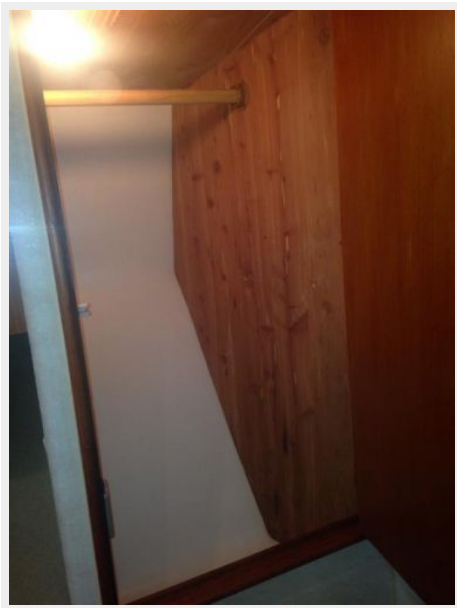
Head



Master stateroom



Hanging closet in master stateroom



Master stateroom door leading to head



Entertainment center



Door leading into engine room



Engine room



Engine room



Engine room



Engine room



Engine room



Generator in engine room



CONTACTS

Andrey Shestakov, leading yacht broker of the sales department of Shestakov Yacht Sales Inc. Shestakov Yacht Sales Inc., the official representative of the Miami/Fort Lauderdale FL headquarters.

Contact details

Email: andrey@shestakovyachtsales.com

Web: shestakovyachtsales.com/en/

Telephones

USA: +1(954)274-4435

Office hours

Monday – Saturday: **9:00 - 21:00** EDT

Sunday: **closed**

Address



Harbour Towne Marina, 850 NE 3rd St,
STE 213, Dania, FL 33004