

TOP FIVE — CHRISTENSEN



Судостроитель: CHRISTENSEN

Год постройки: 2005

Модель: Моторная яхта

Цена: ЦЕНА ЯХТЫ ПО ЗАПРОСУ

Местонахождение: United States

Длина общая: 157' 0" (47.85m)

Ширина: 29' 0" (8.84m)

Макс. осадка: 8' 0" (2.44m)

Крейс. скорость: 12 Kts. (14 MPH)

Макс. скорость: 17 Kts. (20 MPH)

Купить **TOP FIVE — CHRISTENSEN** а также выбрать подходящую вам яхту из нашего каталога яхт вам поможет опытный яхтенный брокер Андрей Шестаков. На сегодняшний день компания **Shestakov Yacht Sales Inc.** имеет большое количество яхт в собственном списке продаж, а также тесно сотрудничает со всеми крупными яхтенными производителями по всему миру.

Для того чтобы купить яхту **TOP FIVE — CHRISTENSEN** а также проконсультироваться по любому вопросу связанному с покупкой, продажей, чартером яхт позвоните по телефону **+7(918)465-66-44**.

ОГЛАВЛЕНИЕ

ОГЛАВЛЕНИЕ	2
ХАРАКТЕРИСТИКИ	5
Основная информация	5
Размеры	5
Скорость, вместимость и масса	5
Размещение	5
Корпус и палуба	6
Информация о двигателе	6
ПОДРОБНОЕ ОПИСАНИЕ	7
Accommodations	7
General Description	7
Machinery	8
Communications and Navigation	8
Entertainment Systems	9
Galley and Laundry Equipment	9
Tenders and Toys	9
Deck Equipment	9
Security, Fire Fighting, and Safety Equipment	9
Broker's Comments	10
Исключения	10
Отказ от ответственности	10
ФОТОГРАФИИ	11
Main Salon	11
Main Salon	11
Main Dining	11
Main Aft Deck	11
Main Aft Deck	11
Galley	11

Galley	12
Foyer Main Deck	12
Hallway into Master Stateroom	12
Master Office	12
Master Office	12
Master Stateroom	12
Master Stateroom	13
Master Hers Bath	13
Master His Bath	13
VIP Stateroom	13
VIP Bath	13
VIP Bath	13
Guest Stateroom	14
Guest Bath	14
Guest Stateroom	14
Guest Bath	14
Guest Stateroom	14
Guest Bath	14
Guest Stateroom	15
Guest Bath	15
Skyounge	15
Skyounge	15
Skyounge	15
Day Head	15
Upper Aft Deck	16
Upper Aft Deck	16
Pilothouse	16
Captain's Cabin	16
Sun Deck	16

Sun Deck Jacuzzi	16
Sun Deck Waverunners	17
Bow	17
Bow Lounge	17
Crew Mess	17
Engine Room	17
Running	17
Running	18
Running	18
Running	18
Running	18
Running	18
Layout	18
Aerial View	18
КОНТАКТЫ	19
Контактная информация	19
Телефоны	19
Время работы	19
Адрес	19

ХАРАКТЕРИСТИКИ

Основная информация

Тип судна: Моторная яхта

Подкатегория: Водоизмещение

Модельный год: 2005

Год постройки: 2005

Год обновления: 2009

Страна: United States

Размеры

Длина общая: 157' 0" (47.85m)

Ширина: 29' 0" (8.84m)

Макс. осадка: 8' 0" (2.44m)

Скорость, вместимость и масса

Крейс. скорость: 12 Kts. (14 MPH)

Дальность на крейсерской скорости:
2500

Макс. скорость: 17 Kts. (20 MPH)

Дальность на макс. скорости: 1350 Kts.

Чистый вес: 499 Pounds

Вместимость воды: 2000 Gallons

Объем топливного бака: 14500 Gallons

Размещение

Всего кают: 6

Спальные места: 16

Каюта капитана: Да

Каюты экипажа: 5

Спальных мест экипажа: 10

Корпус и палуба

Материал корпуса: Fiberglass

Комплектация корпуса: Full
Displacement

Дизайнер интерьера: Carol Williamson

Информация о двигателе

Двигатели: 2

Производитель: MTU

Модель: 12V4000

Тип двигателя: Inboard

Тип топлива: Diesel

ПОДРОБНОЕ ОПИСАНИЕ

Accommodations

TOP FIVE accommodates up to 16 guests in 6 cabins. The elevator accesses all 4 four decks, from the guest quarters up to the sun deck, The full beam on-deck Master cabin has a king-sized bed, walk-in closets, his and her bathrooms with tub and shower. The full beam VIP cabin has a king-sized bed, huge bathroom with tub and shower, ample closet and storage. Two aft guest cabins each have king-sized beds, both with showers, ample closets and storage. The two forward guest cabins each have double beds, a single bed and a pullman, port cabin with bath/tub and starboard with shower. Both cabins have ample closet space and storage. Crew have separate accommodations forward with crew companionway. There is access from crew to lower guest accommodations for purpose of servicing cabins.

General Description

TOP FIVE was built by a superb team of supervisors at one of the premiere yacht builders in America, Christensen Shipyard in Vancouver, WA. TOP FIVE was built for a knowledgeable Yachtsman with close relations to the ship yard. She was commissioned and used by her second owner where she was kept to the highest of yacht standards for six years. Her present owner of 3 years has kept the tradition of keeping TOP FIVE in perfect condition by her exceptional Captain and crew. TOP FIVE boasts a beautiful contemporary interior designed by Carol Williams & Associates and handcrafted in-house by Christensen. Her outstanding features include striking walnut walls and cabinetry and some of the world's finest marble inlay and stonework. She has an incredible 6-stateroom layout that includes Master on the main deck, 5 guest suites below comprised of a full beam VIP, 2 guest suites with kings and 2 guest suites with a full, a single and Pullman berth, giving her accommodations for up to 16 guests. Entering TOP FIVE from starboard through the formal entrance one will reach the foyer to find gorgeous marble floors, beautiful spiral stairs and an elevator that services all decks including the sundeck. A spacious and well-appointed main deck day toilet is located in the forward section of the foyer. Further forward one will reach the on-deck master suite by going through a private owner's study to a full beam master with his and her oversized walk-in closets and ample storage throughout. One can go up to the sky lounge deck by stairs or elevator where you will find a spacious comfortable sky lounge with ample seating, entertainment, a sunken bar with large comfortable bar chairs, and huge windows throughout for views as far as the eye can see. Forward of the sky lounge is the upper deck foyer with day toilet. Passing through the foyer one will reach the bridge, the control center of this fine yacht, equipped with state of the art navigation and communication equipment. One can enter TOP FIVE from the aft deck into the main salon where you will find a huge salon for relaxing and entertaining with large windows on either side, allowing unimpeded views of the water and surroundings. Forward of the main salon one finds formal dining for 12. Continue forward past the dining to reach the foyer. This area is also accessed through the formal entrance on the starboard side of the vessel. TOP FIVE has the most spacious outside deck space of any vessel of its size. The main deck offers seating tables, bars and comfort with the lower deck

having a full covered walk-around. The upper deck offers wonderful seating areas, covered dining for 12 and roomy entertaining areas. The sundeck is absolutely huge and offers covered bar with seating for 9, additional seating at lower table, sun pads, Jacuzzi and elevator access. In addition, the sundeck, with some modification, could offer a touch and go helicopter pad. TOP FIVE has been perfectly kept and used little over her 8 year life. She has had exceptional ownership throughout her life with no money spared to keep her to the highest standard possible. TOP FIVE will prove an outstanding opportunity for any buyer looking for a high quality pedigree with superb fit and finish, 6 staterooms, huge outside deck space, elevator to all decks, modified touch and go heli pad, 4000 nautical mile range and so much more. You are welcome to see the attributes for yourself on notice.

Machinery

Main Engines Engine Type: 2 x MTU/DDC 12V4000 @ 1,800 Hp each Engine Hours: Port: 7989; Stbd: 7989, 10/17/2014 Gearboxes for Main Engines: ZF 4650 A Drive: 2 props **Speed** **Consump/hr Range RPM** Maximum: 17kn 180 gallons/h 1350 NM Cruising: 12kn 70 gallons/h 2500 NM Economical: 9kn 35 gallons/h 3850 NM **Generators & Electricity** Output: 115/208V/ 3 Phase/60 Hz Generators: 2 x 99 kW Northern Lights 1 x 65 kW Northern Lights emergency generator Generator Hours: Port 99Kw - 6724 hours, Stbd 99Kw - 6652 hours, 10/2014; Night 65Kw – 14 950 hours Generator Fuel Consumption: 99 kW 5.5 GPH full load, 65 kW 4.3 GPH @ full load Shore Power: HYAK electrical 3 PH, 208, 240, 380 and 480 volt Batteries: 24/12V DC; Sentry battery charger **Air Conditioning:** Type: Cruise Air 14,000 BTU chillers **Other Machinery:** Elevator to all decks Watermakers: 2 x Village Marine PW 2000 Trim Tabs/Stabilizers: Naiad Zero Speed Stabilizers Bow Thruster: American Bow Thruster 99 Hp Steering System: Jastram Fuel Separator & Filtration: Triple Racor 1000/Alfa Laval MIB 303S-13 Sewage System: Fast Marine Fresh Water System: Burks (2 pumps) Bilge Water Filtration: Bilge Boy Lube Oil Capacity 250 US gallons Waste Oil Capacity 145 gallons Holding Tank: 14,500 Fuel Total Black Water: 600 gallons Clean Oil: 250 gallons

Communications and Navigation

Communication Systems SATcom: Iridium Telephone System: PBX Internal each room and VOIP SSB: Furuno DSC - 60 VHF: (2) Furuno FM8500/(2) standard Horizon Cellular Phone System: Internal through PBX Intercom: Internal through PBX **Navigation Systems** Radar: (2) Furuno S-Band + (1) X-Band Gyrocompass: Anschutz Backup GPS Satellite compass – Furuno Back up auto pilot - Simrad Ap50 Magnetic Compass: Cassens & Plath Auto Pilot: Anschutz Depth Sounder: Furuno FCV1200L color GPS: (2) Simrad NSS7 Sat C: Felcom 15 Ships Computer: Asus pilothouse computer Electronic Chart System: (1) Maptech (1) Nobletech Wind/Speed Log: Brooks & Gatehouse Hydra 2000 Ray Marine speed log Navtex: Furuno NX500

Entertainment Systems

KVH -11 antennas times 2 – HD antennas (2013 new) Sat Internet – Linkscope K Series VSAT antenna – 2012 new Skylounge, Master, Salon,: 65” Samsung 3D 6500 TV, X-box, Apple tv, Western digital, International DVD player, Audio request, (Salon game port) VIP - 55” Samsung 3D 6500 TV, X-box, Apple tv, Western digital, International DVD player, Audio request Dining, Boat deck, 55” Samsung direct tv Guest rooms, Captains ; 36” Samsung TV, X box, audio request. Crew mess, 36” TV, X box , DVD – each crew bunk 17” TV with direct tv box. Crestron Audio

Galley and Laundry Equipment

Main Galley Equipment Cooking Equipment: (2) Thermador Oven C271ZS, 6 plate Thermador Halogen/Induction, Electrolux Microwave Refrigeration/Freezer: (2) Subzero 650 refrigerators Dishwasher: (2) Bosch SHU66C05UC **Crew Galley/Mess Equipment** Cooking Equipment: Microwave oven Refrigeration/Freezer: GE upright Fridge/freezer Other: GE Dishwasher Additional Galley Equipment Refrigeration/Freezer: (1) Walk-in Fridge/freezer, 4 upright freezers Other: (1) Subzero icemaker, (1) Whirlpool garbage compact Laundry Equipment: Main Laundry Equipment 3 times Upright Washer/Dryer combo Speedqueen commercial

Tenders and Toys

Tenders: (1) Nautica RIB 15 (1) Yamaha 60 hp 4-stroke Dive Gear: Compressor and 4 sets of dive gear Other: (2) Honda scooters (4) Yamaha XP waverunners - 2 x 2012 / 2 x 2013

Deck Equipment

Anchor Windlass: Muir Warring Capstans: (4) Aft Muir (2) Bow Muir Anchors: (2) Muir Anchor Chain: (2) 540 ft Boat Crane and Davits: (2) Steel Head Marine, foredeck crane with 2,000 lb capacity and boat deck crane with 4,500 lb capacity Passerelle: 2 pullout forward and one manual passerelle for the aft deck Swimming Platform: SC CFE Italy telescopic Hydraulic

Security, Fire Fighting, and Safety Equipment

Security Equipment: CCTV System: (8) Sony cameras (busy upgrading as we speak) (recordable on 2 TB hard drive) Cameras: (8) sony remote rotation and zoom Monitors: Crew quarters and captains. Also ships computers. **Fire Fighting Equipment:** Fire Control System: Kidde Fenwall CO2 (Engine room) Sprinkler system for interior Fire Extinguishers: Amerex ABC powder Alarms: Hyak Electro Works, Inc. **Safety Equipment:** Life Rafts: Zodiac 16-person Life Rings: 4 (Two on boat deck, two on main deck) EPIRBs: (2) 406 Mhz Flares: Full MCA required inventory Medical Equipment: Marina Medical MCA inventory (2) sets of Drager self-contained

breathing apparatus Full ABS, MCA , MLC complaint

Broker's Comments

TOP FIVE is by far the best value in a six stateroom yacht the market. Her beautiful light and airy interior gives one the feel of being on a much larger vessel. Perfectly appointed with gorgeous wood and marble throughout. TOP FIVE's huge outside space is perfect for lounging or entertaining. TOP FIVE is set up perfectly for charter or private use with an elevator to all decks. TOP FIVE offers a unique opportunity to go yachting on a moment's notice and is ready for inspection your inspection on short notice. You will not be disappointed by what you see upon your visit.

Исключения

При продаже яхты исключаются личные вещи владельца.

Отказ от ответственности

Компания предоставляет описание судна или яхты добросовестно, но не может гарантировать точность этой информации, а также не ручается за техническое состояние. Покупатель должен проинструктировать своих агентов или оценщиков исследовать представленную информацию более подробно, по собственному желанию. Продажа судна или яхты, изменение цены или снятие с продажи будет происходить без предварительного уведомления.

ФОТОГРАФИИ

Main Salon



Main Salon



Main Dining



Main Aft Deck



Main Aft Deck



Galley



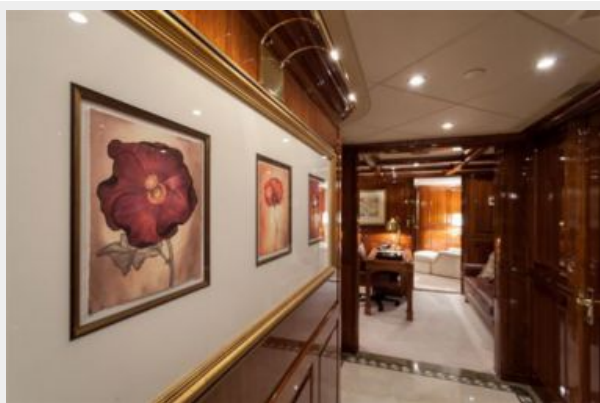
Galley



Foyer Main Deck



Hallway into Master Stateroom



Master Office



Master Office



Master Stateroom



Master Stateroom



Master Hers Bath



Master His Bath



VIP Stateroom



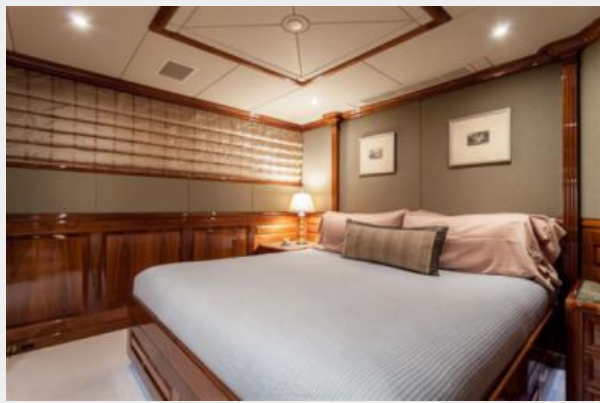
VIP Bath



VIP Bath



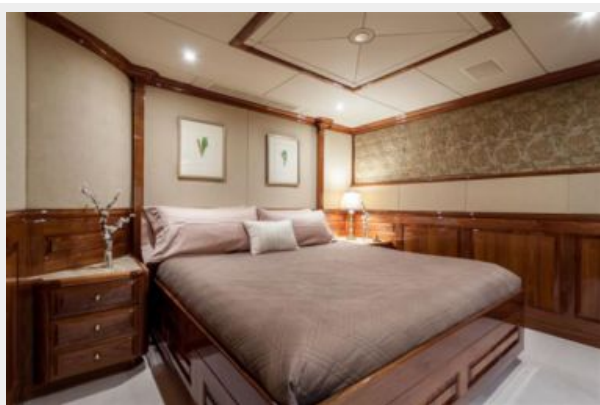
Guest Stateroom



Guest Bath



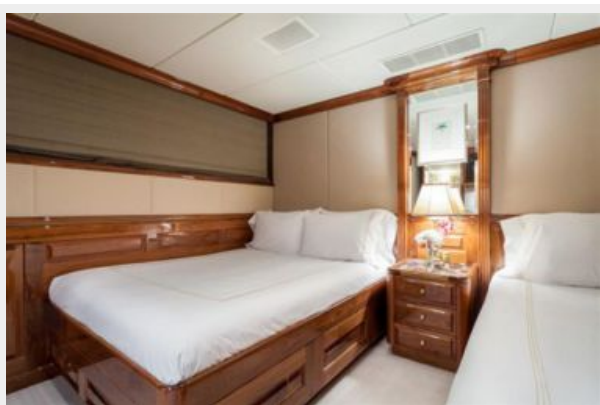
Guest Stateroom



Guest Bath



Guest Stateroom



Guest Bath



Guest Stateroom



Guest Bath



Skylounge



Skylounge



Skylounge



Day Head



Upper Aft Deck



Upper Aft Deck



Pilothouse



Captain's Cabin



Sun Deck



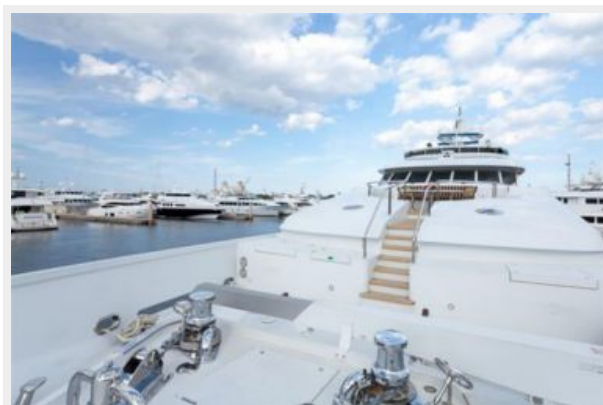
Sun Deck Jacuzzi



Sun Deck Waverunners



Bow



Bow Lounge



Crew Mess



Engine Room



Running



Running



Running



Running



Running



Aerial View



Layout



КОНТАКТЫ

Андрей Шестаков (Andrey Shestakov) – ведущий яхтенный брокер отдела продаж яхт и судов компании Shestakov Yacht Sales Inc. Официальный представитель Shestakov Yacht Sales Inc. для русскоговорящих клиентов в центральном офисе компании в Майами/Форт Лодердейл/Флорида/США.

Контактная информация

Email: andrey@shestakovyachtsales.com

Web: shestakovyachtsales.com

Телефоны

Краснодарский край: **+7(918)465-66-44**

США, Майами, Флорида: **+1(954)274-4435**

Время работы

Понедельник – Суббота: **9:00 - 21:00**
EDT

Воскресенье: **Закрето**

Адрес



Harbour Towne Marina, 850 NE 3rd St,
STE 213, Dania, FL 33004