

## **JOLINA — PRESIDENT YACHTS**



**Builder:** PRESIDENT YACHTS

**Year Built:** 1995

**Model:** Motor Yacht

**Price:** PRICE ON APPLICATION

**LOA:** 92' (28.04mm)

**Beam:** 19.08

**Min Draft:** 5' 7" (1.7mm)

**Cruise Speed:** 19 Knots Kts. (22 MPH)

**Max Speed:** 22 Knots Kts. (25 MPH)

Our experienced yacht broker, Andrey Shestakov, will help you choose and buy a yacht that best suits your needs **Jolina — PRESIDENT YACHTS** from our catalogue. Presently, at **Shestakov Yacht Sales Inc.**, we have a wide variety of yachts available on our sale's list. We also work in close contact with all the big **yacht manufacturers** from all over the world.

If you would like to buy a yacht **Jolina — PRESIDENT YACHTS** or would like help answering any questions concerning purchasing, selling or chartering a yacht, please call **+1(954)274-4435**

# TABLE OF CONTENTS

TABLE OF CONTENTS	2
SPECIFICATIONS	4
Overview	4
Basic Information	4
Dimensions	4
Speed, Capacities and Weight	4
Accommodations	5
Hull and Deck Information	5
Engine Information	5
PHOTOS	6
Starboard side	6
Before Extension and hard top	6
Aft deck	6
Aft platform	6
Side service deck	7
Aft deck	7
Platform	7
Salon	7
Salon	7
Salon	7
Salon entertainment system	8
Day Head	9
Helm in fwd salon	9
Master Stateroom	9
Master head	10
Companionway	10
Vip guest	10
Guest Sateroom 1	11

---

Stbd guest head w shower	11
Port guest	11
Port guest	12
Crew berths off platform	12
FB tender davit	13
Gens	13
Engine Room	13
Jan 2011 Haul	14
Jan 2011 Haul	14
Jan 2011 Haul	14
profile	15
CONTACTS	16
Contact details	16
Telephones	16
Office hours	16
Address	16

---

# SPECIFICATIONS

---

## Overview

---

DRAMATIC PRICE REDUCTION FOR IMMEDIATE "AS IS" SALE. VESSEL IS IN NEED OF FULL COSMETIC REFIT. VERY LOW ORIGINAL HOURS ON 3412 CATS. RUN GREAT. GENS RUN GREAT TOO. VESSEL COULD BE A GREAT LIVE ABOARD OR DIVE CHARTER BOAT. 9' FULL HULL EXTENSION WITH AFT PLATFORM DAVIT AND CREW QUARTERS CAN BE USED AS DIVE AND TOY STORAGE.

PRICED FOR AS IS WHERE IS SALE. WON'T LAST.

## Basic Information

---

**Category:** Motor Yacht

**Sub Category:** Motor Yacht

**Model Year:** 1995

**Year Built:** 1995

## Dimensions

---

**LOA:** 92' (28.04mm)

**Beam:** 19.08

**Min Draft:** 5' 7" (1.7mm)

## Speed, Capacities and Weight

---

**Cruise Speed:** 19 Knots Kts. (22 MPH) **Max Speed:** 22 Knots Kts. (25 MPH)

**Water Capacity:** 500 Gallons

**Fuel Capacity:** 4000 Gal Gallons

**Fuel Consumption:** 80 Gal Gallons

---

## Accommodations

---

**Total Cabins:** 4

**Total Berths:** 6

**Sleeps:** 8

**Total Heads:** 5

**Crew Cabin:** 2

**Crew Berths:** 2

**Crew Heads:** 1

---

## Hull and Deck Information

---

**Hull Material:** Fiberglass

**Deck Material:** Composite Fiberglass

**Hull Configuration:** Semi Vee

**Hull Color:** white

**Hull Designer:** President

---

## Engine Information

---

**Engines:** 2

**Manufacturer:** Caterpillar

**Engine Type:** Inboard

**Fuel Type:** Diesel

# PHOTOS

**Before Extension and hard top**



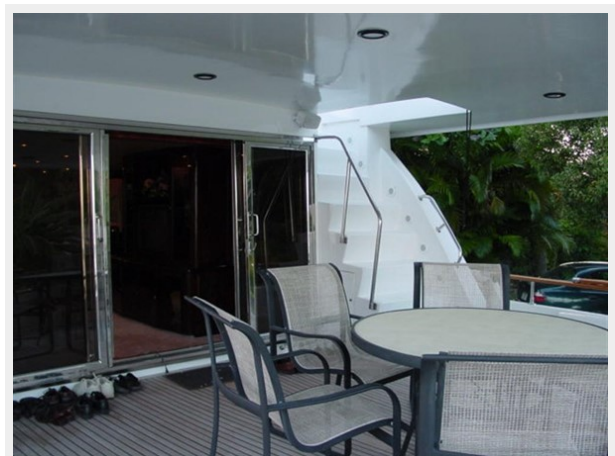
**Starboard side**



**Aft platform**



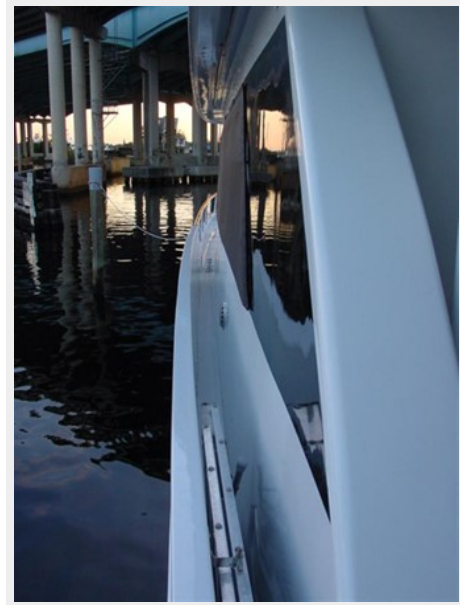
**Aft deck**



**Aft deck**



**Side service deck**



**Platform**



**Salon**



**Salon**



**Salon**





### Salon entertainment system





### Day Head



### Helm in fwd salon



### Master Stateroom



**Master head**



**Companionway**



**Vip guest**





**Guest Sateroom 1**



**Stbd guest head w shower**



**Port guest**



### Port guest



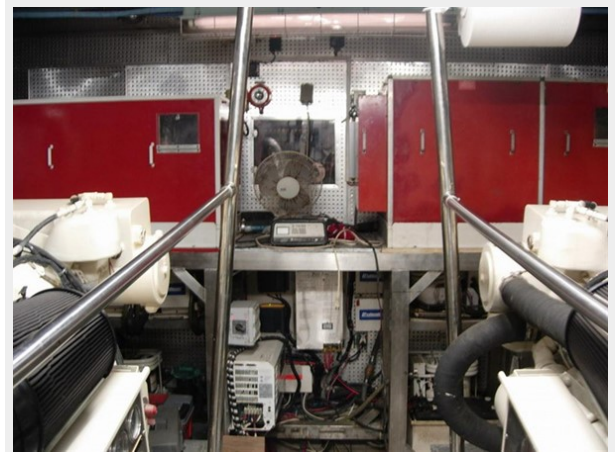
### Crew berths off platform



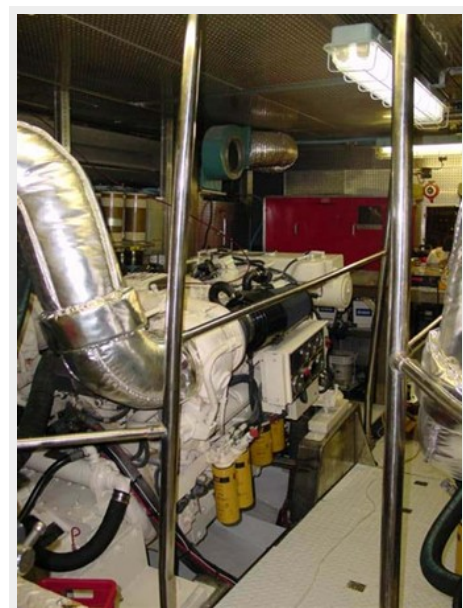
### FB tender davit



### Gens



### Engine Room





**Jan 2011 Haul**

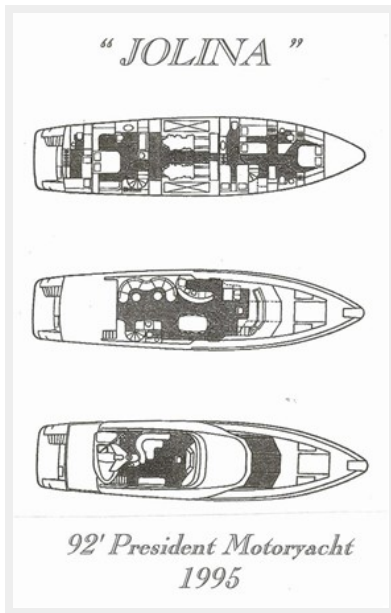


**Jan 2011 Haul**



**Jan 2011 Haul**





**profile**



# CONTACTS

---

Andrey Shestakov, leading yacht broker of the sales department of Shestakov Yacht Sales Inc. Shestakov Yacht Sales Inc., the official representative of the Miami/Fort Lauderdale FL headquarters.

## Contact details

---

Email: **andrey@shestakovyachtsales.com**

Web: [shestakovyachtsales.com/en/](https://shestakovyachtsales.com/en/)

## Telephones

---

USA: **+1(954)274-4435**

## Office hours

---

Monday – Saturday: **9:00 - 21:00** EDT

Sunday: **closed**

## Address

---



Harbour Towne Marina, 850 NE 3rd St, STE 213, Dania, FL 33004