

PAIR OF KINGS — SEA RAY



Builder: [SEA RAY](#)

Year Built: 2004

Model: Cruiser

Price: PRICE ON APPLICATION

Location: United States

LOA: 39' 0" (11.89m)

Beam: 12' 6" (3.81m)

Max Draft: 3' 1" (0.94m)

Cruise Speed: 22 Kts. (25 MPH)

Max Speed: 28 Kts. (32 MPH)

Our experienced yacht broker, Andrey Shestakov, will help you choose and buy a yacht that best suits your needs **PAIR OF KINGS — SEA RAY** from our catalogue. Presently, at Shestakov Yacht Sales Inc., we have a wide variety of yachts available on our sale's list. We also work in close contact with all the big yacht manufacturers from all over the world.

If you would like to buy a yacht **PAIR OF KINGS — SEA RAY** or would like help answering any questions concerning purchasing, selling or chartering a yacht, please call **+1(954)274-4435**

TABLE OF CONTENTS

TABLE OF CONTENTS	2
SPECIFICATIONS	4
Basic Information	4
Dimensions	4
Speed, Capacities and Weight	4
Accommodations	4
Hull and Deck Information	4
Engine Information	5
DETAILED INFORMATION	6
Broker Remarks	6
Accommodations	6
Galley	6
Electronics & Navigation Equipment	6
Electrical Equipment	7
Deck Equipment	7
Fishing Equipment	7
Engine Room/Mechanical Equipment	8
Additional Details	8
Exclusions	8
Exclusions	8
Disclaimer	8
PHOTOS	9
Galley	9
Dinette/Salon	9
Head	9
Master Stateroom	9
Main Power Panel	9
Helm	9

Autopilot/Thruster	10
Wet Bar Area	10
Cockpit Seating	10
Sundancer Logo	10
Engine Port	10
Engine Starboard	10
Bow View	11
Engine Room	11
Swim Platform	11
Transom View	11
CONTACTS	12
Contact details	12
Telephones	12
Office hours	12
Address	12

SPECIFICATIONS

Basic Information

Category: Cruiser

Sub Category: Express

Model Year: 2004

Year Built: 2004

Country: United States

Vessel Top: 2353

Dimensions

LOA: 39' 0" (11.89m)

Beam: 12' 6" (3.81m)

Max Draft: 3' 1" (0.94m)

Speed, Capacities and Weight

Cruise Speed: 22 Kts. (25 MPH)

Cruise Speed RPM: 3750 Kts.

Max Speed: 28 Kts. (32 MPH)

Max Speed RPM: 4500 Kts.

Displacement: 18500 Pounds

Water Capacity: 55 Gallons

Fuel Capacity: 250 Gallons

Accommodations

Total Cabins: 2

Sleeps: 6

Total Heads: 1

Hull and Deck Information

Hull Material: Fiberglass

Hull Configuration: Deep Vee

Engine Information

Engines: 2

Manufacturer: Mercruiser

Model: 8.1 Horizon

Engine Type: Inboard

Fuel Type: Gas

DETAILED INFORMATION

Broker Remarks

***ILLNESS FORCES SALE, OWNER IS UNABLE TO USE THE BOAT* VERY MOTIVATED- BRING ALL OFFERS!**

Accommodations

Upon entering the cabin, the head and shower is conveniently located to port. The galley is also on the port side with granite countertop, along with two burner stove, sink, refrigerator, freezer and microwave. The master stateroom is forward with a dividing door for privacy. Starboard side mid-ship is the crescent Ultra-leather sofa that converts to a double berth, this is also the dinette seating area. Aft is the conversation area that converts to a private stateroom with double berth.

Galley

- Upper & lower cabinetry in galley
- Refrigerator with freezer
- 2 Burner Kenyon electric stove
- Water system - pressure-dockside
- Water heater

Electronics & Navigation Equipment

- Raymarine ST 6001 autopilot
- Compass 5"
- Raymarine radar
- Standard Horizon VHF
- Rudder angle indicator
- KVH-4 SAT TV system
- Clarion AM/FM/CD stereo with amp
- ACR remote spotlight
- Mercury Smartcraft monitor
- Vetus bow/stern thruster
- Bose entertainment system in cabin

Electrical Equipment

- (4) Batteries
- Battery parallel switch
- Battery charger 40 amp automatic
- Kohler generator 7.3kW - 1175 hrs
- DC Electrical system 12V
- AC Electrical system 110V
- Shore power dual 30 amp 120V/60 cycle
- TV/phone inlet
- Engine synchronizer
- Wiring color coded
- Central vacuum system

Deck Equipment

- (1) Anchor - galvanized plow
- Anchor davit
- Bow pulpit & rails
- Side stanchions with lifelines
- Covers & curtains
- Bridge curtains
- Aft-deck curtains
- Bimini top
- Coast Guard approved safety package
- Fiberglass deck
- Freshwater wash down system
- Fenders & lines
- (4) Life jackets
- Navigation lights
- Single search light - electric remote control
- Swim platform
- 3 Step boarding ladder
- Lofrans Progress I electric windlass
- Windshield washers & wipers
- Underwater lights
- Electric front vent at lower front windshield opening
- Forward deck sunpad

Fishing Equipment

- (2) Rod holders

Engine Room/Mechanical Equipment

- Cruisair air conditioner - reverse cycle - 16000 BTU's
- (2) Automatic bilge pumps
- (2) Bilge blowers
- Vetus DC bow thrusters
- Bridge controls
- Engine alarm
- Automatic Halon fire extinguishing system
- Fuel filters
- Engine fuel shut off valve
- Head electric holding/overboard
- Hydraulic steering
- Bennett trim tabs
- Synchronizers
- Transmission

Additional Details

- Bottom painted and hull polished 6/13
- New batteries installed 9/13
- New stereo and amp 12/13

Exclusions

- Owner's personal items

Exclusions

Owner's personal belongings.

Disclaimer

The Company offers the details of this vessel or yacht in good faith but cannot guarantee or warrant the accuracy of this information nor warrant the condition of the vessel. A buyer should instruct his representatives, agents, or his surveyors, to investigate such details as the buyer desires validated. This vessel or yacht is offered subject to prior sale, price change, or withdrawal without notice.

PHOTOS

Dinette/Salon



Galley



Master Stateroom



Head



Main Power Panel



Helm



Autopilot/Thruster



Wet Bar Area



Cockpit Seating



Sundancer Logo



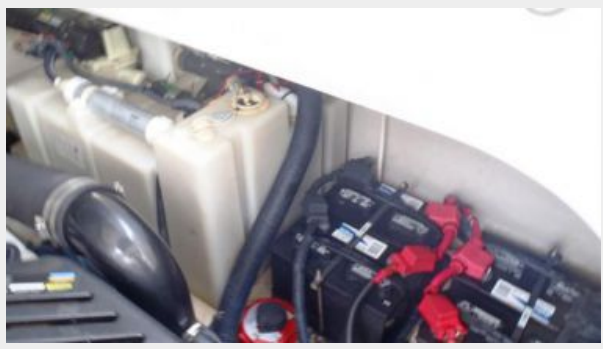
Engine Port



Engine Starboard



Engine Room



Bow View



Transom View



Swim Platform



CONTACTS

Andrey Shestakov, leading yacht broker of the sales department of Shestakov Yacht Sales Inc. Shestakov Yacht Sales Inc., the official representative of the Miami/Fort Lauderdale FL headquarters.

Contact details

Email: andrey@shestakovyachtsales.com

Web: shestakovyachtsales.com/en/

Telephones

USA: +1(954)274-4435

Office hours

Monday – Saturday: **9:00 - 21:00** EDT

Sunday: **closed**

Address



Harbour Towne Marina, 850 NE 3rd St,
STE 213, Dania, FL 33004