

## SEA MIXER — VIKING



**Builder:** [VIKING](#)

**Year Built:** 2001

**Model:** Sport Fisherman

**Price:** PRICE ON APPLICATION

**Location:** United States

**LOA:** 55' 0" (16.76m)

**Beam:** 17' 4" (5.28m)

**Max Draft:** 4' 6" (1.37m)

**Cruise Speed:** 30 Kts. (35 MPH)

**Max Speed:** 36 Kts. (41 MPH)

Our experienced yacht broker, Andrey Shestakov, will help you choose and buy a yacht that best suits your needs **Sea Mixer — VIKING** from our catalogue. Presently, at Shestakov Yacht Sales Inc., we have a wide variety of yachts available on our sale's list. We also work in close contact with all the big yacht manufacturers from all over the world.

If you would like to buy a yacht **Sea Mixer — VIKING** or would like help answering any questions concerning purchasing, selling or chartering a yacht, please call **+1(954)274-4435**

# TABLE OF CONTENTS

TABLE OF CONTENTS	2
SPECIFICATIONS	5
Overview	5
Basic Information	5
Dimensions	5
Speed, Capacities and Weight	5
Accommodations	5
Hull and Deck Information	6
Engine Information	6
DETAILED INFORMATION	7
Salon	7
Galley	8
Companionway	8
Master Stateroom	8
Master Head	9
VIP Stateroom Fwd	10
Guest Head to Stbd	10
Crew Quarters	11
Cockpit	11
Bow	12
Bridge	13
Electronics	13
Engine Room	14
Exclusions	16
Disclaimer	16
PHOTOS	17
Profile	17
Profile	17

---

Profile	17
Profile	17
Cockpit	18
Cockpit	18
Cockpit	18
Cockpit	18
Cockpit	18
Cockpit	18
Cockpit	18
Cockpit	19
Salon	19
Salon	19
Salon	19
Dinette	19
Salon	19
Galley	20
Galley	20
Galley	20
Master Stateroom	20
Master Stateroom	20
Master Stateroom	20
Master Head	21
Forward Stateroom	21
Forward Stateroom	21
Guest Head	21
Guest Stateroom	22
Laundry	22
Flybridge	22
Flybridge	22
Flybridge	23

---

---

Flybridge	23
Flybridge	23
Flybridge	23
Engine Room	23
Engine Room	23
Engine Room	24
Engine Room	24
Engine Room	24
Engine Room	24
Engine Room	24
Engine Room	25
Profile	25
Profile	25
Profile	25
Profile	25
Profile	26
Profile	26
Stern	26
Profile	26
<b>CONTACTS</b>	<b>27</b>
Contact details	27
Telephones	27
Office hours	27
Address	27

---

# SPECIFICATIONS

---

## Overview

---

**Price Reduced Again - December 2014! Sea Mixer has newly rebuilt (2014) 1300 HP MAN engines.** Only 55' on the market with mezzanine seating. Fish boxes, drink boxes and bait boxes galore. Cockpit repainted and black mask done by Viking in Feb. 2010. All new electronics 2009, 2 Furuno 11" NavNet C-map NT's including KVH M5 Sat TV antenna. She cruises 30 kts and has a top speed of 36 kts. New Ocean LED underwater lights in 2012, 2 live wells, one at transom and one in the cockpit floor.

## Basic Information

---

**Category:** Sport Fisherman

**Sub Category:** Sport Fisherman

**Model Year:** 2001

**Year Built:** 2001

**Country:** United States

## Dimensions

---

**LOA:** 55' 0" (16.76m)

**Beam:** 17' 4" (5.28m)

**Max Draft:** 4' 6" (1.37m)

## Speed, Capacities and Weight

---

**Cruise Speed:** 30 Kts. (35 MPH)

**Max Speed:** 36 Kts. (41 MPH)

**Displacement:** 68800 Pounds

**Water Capacity:** 250 Gallons

**Fuel Capacity:** 1550 Gallons

## Accommodations

---

**Total Cabins:** 3

**Total Heads:** 2

---

## Hull and Deck Information

---

**Hull Material:** Fiberglass

---

## Engine Information

---

**Manufacturer:** MAN

**Fuel Type:** Diesel

---

# DETAILED INFORMATION

---

## Salon

---

Overhead lighting

Stereo speakers in headliner

JVC TV

Cabinet beside TV for storage

Beige carpeting

Teak and holly entranceway to salon

Salon door teak high glass

Cruisair AC with SMX II digital control

L-shaped leather couch to port with storage underneath

U-shaped galley to port

Dinette to stbd with Corian countertops and teak bull nosing

Teak high gloss interior

Teak countertops to stbd with Viking Yachts electric panel

Behind high gloss door, liquor cabinet to stbd

Harmon Kardon Stereo system

JVC receiver, JVC player

Onan gen set remote start

Fabric valances with roman shades

Teak high gloss valance with AC that dumps out from top

Teak faced table with storage underneath

Dinette C-shaped seating for 4 or more

Leather coverings with storage underneath

---

## Galley

---

U-shaped walk in style

Princess (3) burner cooktop

Mirrored backsplash

Grohe fixtures

Insta hot

Stainless under the counter mount sink

Trash disposal in sink

Corian countertops with high gloss teak bullnosing

Under corian countertop, shelving for pots and pans

Set of 4 drawers

Sub panel for electric

Fresh water tank gauge

(3) sets Sub Zero

(2) sets refrigerator / 1 set freezer

Teak and holly flooring

(2) 110 volt outlets

---

## Companionway

---

abinet door to right with 2 shelves

Beige vinyl wall coverings throughout

(3) access hatches in companionway floor to bilge

Overhead 12/24V lighting

Kenmore water and dryer

---

## Master Stateroom

---



---

Large queen sized centerlined bed with teak high gloss nightstands on either side

2 lamps with drawers underneath

Ostrich skin wall covering throughout

Actuated storage underneath bed

Cruisair AC

JVC TV

JVC VHS player

At foot of bed overtop large makeup counter with drawer underneath and 2 cabinets

Large hanging closet cedar lined at foot of bed with 12V lighting

(3) 110V outlets

JVC stereo and CD player

Phone jack

On port side of Master bed, 2 sets of drawers and 2 cabinets

## Master Head

---

Mirrored vanity

Bone colored corian sink with Grohe fixtures

Wallpapered walls throughout

12/24V lighting

Teak and holly flooring

Vacuflush head system

Mirrored towel cabinet

Overhead lexan towel rack

Bi-folding shower door

Large shower with seating and Grohe fixtures

Light fixture with overhead lights, shower light, soffit lights, exhaust fan and holding tank indicator

110V outlet

Teak high gloss entry door

---

## VIP Stateroom Fwd

---

Criss-cross beds

Upper bed single bunk

Lower double bed

Wallpapering and vinyl covering throughout

JVC TV

Overhead Bomar hatch with privacy shade

Over top lower bed shelving with teak bull nosing

Mirrored wall forward

Bank of (4) drawers under lower bunk

Carpeted step up to beds

(2) cabinets underneath upper with shelving

Hanging closet to port cedar line

Cruisair AC control SMX II digital

Stereo speaker volume control

(2) speakers

Overhead lighting

110V outlet

(2) Bilge access hatches in floor

---

## Guest Head to Stbd

---

Bi-folding shower door

Large shower with seating

Grohe fixtures and shower head

Wallpaper throughout

SeaLand VacuFlush head

Teak and holly flooring

Bone colored vanity

Mirrored medicine cabinet

Overhead lighting

Grohe fixture

Teak high gloss entry doors with ability to enter through crews quarters or fwd stateroom with access to either

---

## Crew Quarters

---

Upper/lower bunk cruiser quarters with closet to stbd cedar lined

Rod storage

Textured wallpaper and vinyl wall coverings

Nightstand to foot of top bunk with mirror and stand of 4 drawers

Rod storage under lower bunk

Cruisair AC

Overhead lighting SMX cruisair control

Stereo control button

110V outlet

---

## Cockpit

---

Mezzanine seating with freezer under top seat

Lower has storage or refrigerator seating

Engine room access hatch

Step leading to salon is refrigerated drink box

Step to stbd has storage

Bank of 4 tackle drawers

Teak covering boards with (4) Lee rod holders

Livewell transom with front glass access for viewing

Eskimo ice dump in deck hatch on port side

Fixbox in center

Fishbox in deck

Livewell to starboard in deck

Gaff locker to port side with fresh and saltwater washdown

(2) rod holders in tower leg on each side

(2) overhead lights in hardtop

Access ladder with stbd steps leading to bridge

(2) stainless cleats

Stainless house pipes

Electric reel plugs underneath covering boards

Transom door

Murray Bros fighting chair

Mezzanine cushions

Large salon windows

---

## **Bow**

---

Non skid deck

Black brow just painted

Pipewelders bow rail

(4) stainless cleats

Bowmar hatch

Anchor locker fwd with fresh water washdown

---

## Bridge

---

Two Murray Brothers helm chairs

Long bench seating to stbd with rod storage

Hardtop painted

3-sided enclosure

Fwd seating with storage

Bench seating to port with rod storage underneath

Refrigerated drink box forward

Seating fwd to helm with storage under

Storage under brow with cabinet access

---

## Electronics

---

2) Furuno NavNet II VX II plotter/sounder/radar

Big bay 17" monitor

B&G temp gauge

951 Northstar GPS

Furuno depth sounder and radar

MAN digital engine gauges

Icom 502 VHF

Sirius Sat radio

Glendenning controls

Glendenning gauge with trolling valves

Stop/start buttons

Ditech ST 1000 temp gauge

Richie compass

Non skid flooring

Pipewilders tower

Rupp riggers

Quarts stereo speakers

Overhead lighting with red chart lighting

Miya Epoch CX 6 teaser reels

Pipewelders belly band with 6 rod holders

LED recessed running lights

Spreader lights forward and aft in tower

Custom seating

VHF 502

Navnet VX2 repeater

Start/stop controls

Under helm - Access to electronics and breaker panel

## Engine Room

---

24/12 volt DC battery distribution center

Manuel engine start/stop

Lesson 24/12 volt oil transfer system

Oil change system

Crash pumps

Eskimo ice maker

Rule Bilge pumps

Dripless shaft seals

Glendenning control system

Overhead 12/24 volt lighting

Heat deflectors on engine room ceiling

Digital MAN engine gauges

Switches for fish box drain, engine room fans, blowers, sea water pump and engine room lights

Digital gauges for cockpit freezer and refrigerated step box

Tool chest to port side

Watermakers Inc watermaker with 1890 hrs

Onan 21.5kw generator to stbd with sound shield

Onan genset (port 5,735 hrs, stbd 5,511 hrs)

(2) Charles C-Power Isoboost

Cruisair freezer compressor

Marine exhaust risers

Dual Racor system on both motors

Vanner voltmaster ADF battery charger for generators

Century cruiseair battery charger

24V system

Air breather mist eliminator system

Cruisair AC unit compressors

Welex troll fresh water pressure tank

Raritan hot water heater

12V blower fan

Lesson 12/24V fuel transfer system

Flotech fresh water pump

Jabsco 24V blower fans

Keystone filter system for fresh water for house water

Hydrocell hydraulic pump

## **Exclusions**

---

Owner's personal belongings.

## **Disclaimer**

---

The Company offers the details of this vessel or yacht in good faith but cannot guarantee or warrant the accuracy of this information nor warrant the condition of the vessel. A buyer should instruct his representatives, agents, or his surveyors, to investigate such details as the buyer desires validated. This vessel or yacht is offered subject to prior sale, price change, or withdrawal without notice.



# PHOTOS

Profile



Profile



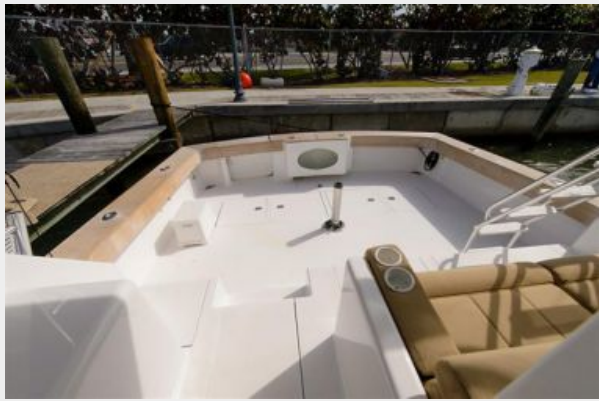
Profile



Profile



Cockpit



Cockpit



Cockpit



Cockpit



Cockpit



Cockpit



Cockpit



Salon



Salon



Salon



Salon



Dinette





**Galley**



**Galley**



**Galley**



**Master Stateroom**



**Master Stateroom**



**Master Stateroom**



**Master Head**



**Forward Stateroom**



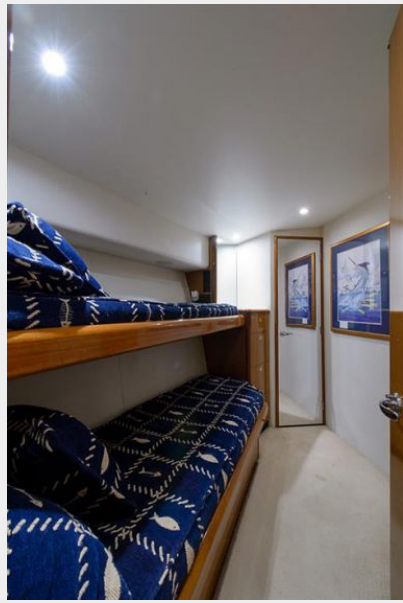
**Forward Stateroom**



**Guest Head**



### Guest Stateroom

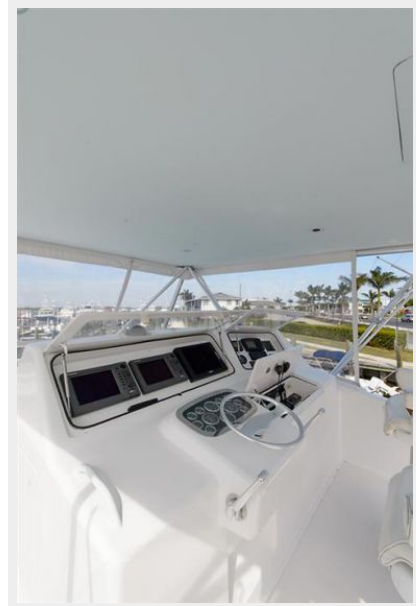


### Laundry



### Flybridge

### Flybridge





**Flybridge**



**Flybridge**



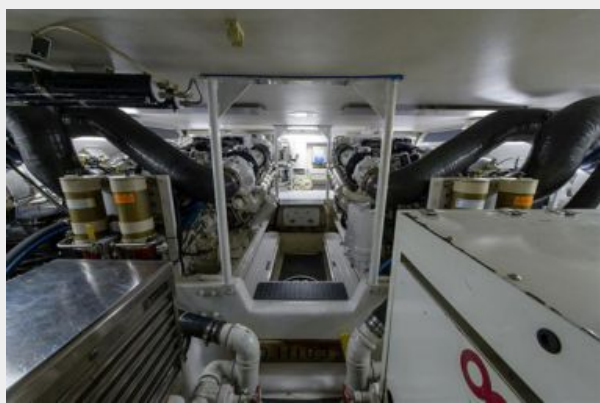
**Flybridge**



**Flybridge**



**Engine Room**



**Engine Room**



Engine Room



Engine Room



Engine Room

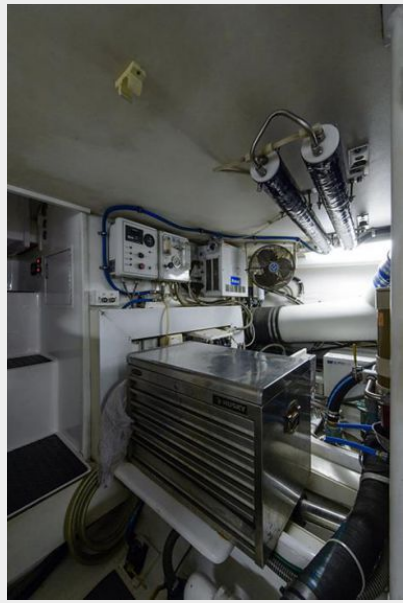


Engine Room





### Engine Room



### Profile



### Profile



### Profile



### Profile



**Profile**



**Profile**



**Stern**

**Profile**



---

# CONTACTS

---

Andrey Shestakov, leading yacht broker of the sales department of Shestakov Yacht Sales Inc. Shestakov Yacht Sales Inc., the official representative of the Miami/Fort Lauderdale FL headquarters.

---

## Contact details

---

Email: [andrey@shestakovyachtsales.com](mailto:andrey@shestakovyachtsales.com)

Web: [shestakovyachtsales.com/en/](http://shestakovyachtsales.com/en/)

---

## Telephones

---

USA: +1(954)274-4435

---

## Office hours

---

Monday – Saturday: **9:00 - 21:00** EDT

Sunday: **closed**

---

## Address

---



Harbour Towne Marina, 850 NE 3rd St,  
STE 213, Dania, FL 33004