

## MIMI — NEPTUNUS



**Builder:** NEPTUNUS

**Year Built:** 2003

**Model:** Motor Yacht

**Price:** PRICE ON APPLICATION

**Location:** United States

**LOA:** 56' 0" (17.07m)

**Beam:** 16' 2" (4.93m)

**Max Draft:** 5' 1" (1.55m)

**Cruise Speed:** 23 Kts. (26 MPH)

**Max Speed:** 28 Kts. (32 MPH)

Our experienced yacht broker, Andrey Shestakov, will help you choose and buy a yacht that best suits your needs **MIMI — NEPTUNUS** from our catalogue. Presently, at Shestakov Yacht Sales Inc., we have a wide variety of yachts available on our sale's list. We also work in close contact with all the big yacht manufacturers from all over the world.

If you would like to buy a yacht **MIMI — NEPTUNUS** or would like help answering any questions concerning purchasing, selling or chartering a yacht, please call **+1(954)274-4435**

# TABLE OF CONTENTS

---

|                              |    |
|------------------------------|----|
| TABLE OF CONTENTS            | 2  |
| SPECIFICATIONS               | 6  |
| Basic Information            | 6  |
| Dimensions                   | 6  |
| Speed, Capacities and Weight | 6  |
| Accommodations               | 6  |
| Hull and Deck Information    | 7  |
| Engine Information           | 7  |
| DETAILED INFORMATION         | 8  |
| Vessel Walkthrough           | 8  |
| Salon                        | 8  |
| Galley                       | 9  |
| Dining Area                  | 9  |
| Lower Helm                   | 9  |
| Companionway                 | 10 |
| Master Stateroom             | 10 |
| Master Head                  | 11 |
| Starboard Guest Cabin        | 11 |
| Guest Head to Port           | 11 |
| VIP Cabin                    | 11 |
| Foredeck                     | 12 |
| Aft Deck                     | 12 |
| Flybridge Deck               | 13 |
| Flybridge Helm Equipment     | 13 |
| Lazarette                    | 13 |
| Engine Room                  | 14 |
| Electrical                   | 14 |
| Construction Details         | 15 |

|                              |    |
|------------------------------|----|
| Remarks                      | 15 |
| Exclusions                   | 15 |
| Exclusions                   | 15 |
| Disclaimer                   | 15 |
| PHOTOS                       | 16 |
| Salon Looking Forward        | 16 |
| Salon Looking to Port        | 16 |
| Salon Looking to Starboard   | 16 |
| Salon Looking Aft            | 16 |
| Galley Looking Forward       | 16 |
| Galley Looking to Port       | 16 |
| Galley Looking Aft           | 17 |
| Dining Area                  | 17 |
| Lower Helm                   | 17 |
| Lower Helm                   | 17 |
| Companionway                 | 17 |
| Companionway Laundry         | 17 |
| Companionway Looking Forward | 18 |
| Master Looking Aft           | 18 |
| Master Looking to Port       | 18 |
| Master Looking to Starboard  | 18 |
| Master Head                  | 18 |
| Master Head                  | 18 |
| Guest Cabin                  | 19 |
| Guest Head                   | 19 |
| VIP Looking Forward          | 19 |
| VIP Looking to Port          | 19 |
| VIP Looking to Starboard     | 19 |
| VIP Looking Aft              | 19 |

|                              |    |
|------------------------------|----|
| Foredeck                     | 20 |
| Foredeck                     | 20 |
| Windlass                     | 20 |
| Anchor                       | 20 |
| Walk Around Side Deck        | 20 |
| Aft Deck                     | 20 |
| Aft Deck                     | 21 |
| Aft Deck Seating             | 21 |
| Custom Aft Deck S/S Grill    | 21 |
| Custom Aft Deck Sunshade     | 21 |
| Flybridge Access Stairs      | 21 |
| Hydraulic Platform           | 21 |
| Flybridge Bar                | 22 |
| Flybridge Seating            | 22 |
| Forward Flybridge Sun Lounge | 22 |
| Helm Area                    | 22 |
| Helm                         | 22 |
| Helm Detail Port             | 22 |
| Helm Detail Starboard        | 23 |
| Hardtop Equipment            | 23 |
| Lazarette Engine Room Access | 23 |
| Lazarette                    | 23 |
| Port Engine                  | 23 |
| Starboard Engine             | 23 |
| Spare Prop                   | 24 |
| Immaculate Bilges            | 24 |
| Workbench                    | 24 |
| Onan Generator               | 24 |
| Running                      | 24 |

---

|                 |    |
|-----------------|----|
| Running         | 24 |
| Running         | 25 |
| CONTACTS        | 26 |
| Contact details | 26 |
| Telephones      | 26 |
| Office hours    | 26 |
| Address         | 26 |

---

# SPECIFICATIONS

---

## Basic Information

---

**Category:** Motor Yacht

**Sub Category:** Flybridge

**Model Year:** 2003

**Year Built:** 2003

**Country:** United States

**Vessel Top:** Hardtop

**Fly Bridge:** Yes

## Dimensions

---

**LOA:** 56' 0" (17.07m)

**Beam:** 16' 2" (4.93m)

**Max Draft:** 5' 1" (1.55m)

## Speed, Capacities and Weight

---

**Cruise Speed:** 23 Kts. (26 MPH)

**Cruise Speed RPM:** 2000 Kts.

**Cruise Speed Range:** 340

**Max Speed:** 28 Kts. (32 MPH)

**Max Speed RPM:** 2300 Kts.

**Gross Tonnage:** 28 Pounds

**Water Capacity:** 180 Gallons

**Holding Tank:** 110 Gallons

**Fuel Capacity:** 820 Gallons

## Accommodations

---

**Total Cabins:** 3

**Sleeps:** 6

**Total Heads:** 2

---

## Hull and Deck Information

---

**Hull Material:** Fiberglass

**Deck Material:** Teak

**Hull Configuration:** Deep Vee

**Hull Designer:** Tony Castro

**Exterior Designer:** Tony Castro

**Interior Designer:** Neptunus

---

## Engine Information

---

**Engines:** 2

**Manufacturer:** Caterpillar

**Model:** 3406E

**Engine Type:** Inboard

**Fuel Type:** Diesel

---

# DETAILED INFORMATION

---

## Vessel Walkthrough

---

This 56' Neptunus "Flybridge Model" offers more than any other similar size yacht with her three generous Staterooms, two Heads, a Lower Helm Station, an on deck Galley and dining options forward of the Galley or on the Flybridge.

The interior has the perfect blend of high gloss natural cherry joinery, padded light tan Ultra Leather paneling, silk fabrics. The hue of the Ultra Leather Whisper Walls and headliner in this area are unique to this particular 56' Neptunus and provides a very rich look.

The deck plan of the main deck, below deck and Flybridge are unique only to Neptunus designs. The Neptunus Space planning is excellent and needs to be seen to be appreciated.

Upon entering the Aft Deck, with built in seating and port and starboard access to the side decks, the same deck level Salon is entered via a centerline door. There is seating to both port and starboard with the full Galley two steps up on the port side. Forward of the Galley is ample dinette seating to port with the Lower Helm to starboard. Just aft of the Lower Helm are the curved steps to the accommodations below. The Master is aft with an en suite Head. Forward to starboard is a twin lower berth Guest Cabin. All the way forward is the VIP. The shared Guest Head is to port opposite the Guest Cabin.

---

## Salon

---

The Salon is entered via a curved "Trend" stainless steel sliding door with a sliding insect screen and lined silk drapery. The entire main deck is open with two levels of accommodation. To port is an L shaped rust colored Ultra Leather sofa with storage below the cushions. An oval cherry and burl wood coffee table lies in front of the settee.

To starboard are two matching barrel chairs with storage cabinets outboard. Just forward of the settee is a Samsung 32" LCD TV on the cherry countertop above. Above is a cabinet with the KVH service port, Clarion AM/FM/CD/Sat radio and the KVH Sat controller.

Also in the Salon are the Neptunus signature bi level cabin side windows each with silk drapes and an upholstered panel between. Additional equipment includes Clarion Two Stage stereo speakers, two subwoofers, a Walvac central vacuum unit and outlet, digital Marine Air AC controls. Seven halogen mini spots on a dimmer and rope lighting behind the upper valance provide lighting. The upper valance delivers the air conditioning in an even flow throughout the Salon.

A bulkhead mounted swing arm lamp and footstool accompanies the two occasional chairs.



---

## Galley

---

This open floor plan leads you forward and up two steps into the full Galley. The Galley's design is U shaped to port is well laid out for very efficient use and includes the following features:

Cherry plank flooring Avonite countertops Double stainless steel under mount sink w/removable Avonite covers Moen single lever faucet w/removable sprayer Stainless steel soap dispenser Gaggenau four burner Ceran type 240V cook top Exhaust fan Panasonic Dimension 4 convection/microwave oven concealed behind a cherry door Sub Zero under counter freezer w/icemaker behind a cherry door Sub Zero under counter refrigerator behind a cherry door Insinkerator disposal (6) Halogen mini spots (4 additional under the cabinet) (10) Cherry cabinet doors for storage space (3) Cherry drawers Portside windows with drapes (2) GFCI outlets

---

## Dining Area

---

One step up from the Galley is the yacht's Dining Area on the port side just ahead of and open to the Galley.

A curved settee faces aft but offers an excellent view out the large forward and side windows. A unique burl wood and cherry table folds in half for easy entry/exit. The tan fabric upholstered settee easily seats four and would be considered the best seats in the house while underway.

Also in this area is a skylight to the Lower Companionway, another Marine Air digital AC control and two directional halogen mini spots over the table.

The sole of this area is carpeted to match the Salon.

Also in this area are two more Clarion Two Stage stereo speakers and window defoggers.

---

## Lower Helm

---

To starboard on the same level as the Dinette is a complete Lower Helm with a rust color Ultra Leather oversize helm bench with storage below. Five cherry cabinets below the Helm offer extra storage space for charts, cruising equipment and equipment access.

Equipment at the Lower Helm includes:

(2) CAT LCD engine monitors Northstar 952X GPS/plotter Simrad AP20 autopilot Raymarine ST 60 Tridata for depth/speed/log/temp Raymarine Ray 220 VHF w/remote speaker Raymarine RL 80C color 72 mile radar/plotter w/4' open scanner Dino tilt wood steering wheel Hydraulic power assist steering Twin Disc electronic clutch & throttle controls w/synchronizer & trolling speed Vetus bow thruster control Bennett trim tab controls Fireboy Halon override controls (3) Windshield wipers/washers Air horn control (4) Bilge pump switches w/(3) bilge pump counters & alarm Generator on indicator Defogger controls 5" Ritchie Power Damp compass 12 Volt

accessory outlet ITT Jabsco searchlight controls

Just aft of the Lower Helm is a countertop with a top access cabinet and an additional storage cabinet facing the Galley.

---

## Companionway

---

To the starboard side opposite the Galley are seven curved carpeted steps, LED step lights, a bookshelf and an opening stainless steel porthole half way down the stairs. The yacht's main electrical panel is near the top of the steps.

At a landing at the bottom of the steps is a Whirlpool Thin Twin heavy duty washer dryer in a cedar lined locker behind cherry doors.

Continuing forward are carpeted steps going up, a skylight to the Dining Area above, equipment access below the sole, cherry handrails with hidden rope lighting and LCD mini lights at the steps.

---

## Master Stateroom

---

At the bottom of the Companionway slightly aft is an arched cherry doorway that accesses the Master Cabin. A raised platform berth with two storage drawers and rope lighting below is positioned off the port aft corner maximizing the floor space of the cabin. The mattress is a Tempurpedic mattress. Twin brass swing arm lamps flank the upholstered headboard that sits upon a mirrored bulkhead. To port is cabinetry forming a nightstand with a drawer below, bookshelf above and two opening stainless steel portholes with drapes above the bookshelf. Next forward is access to the en suite Head.

To the starboard side of the berth is a nightstand with three drawers below and an adjacent cabinet with three additional drawers, between them is a cherry cabinet.

Next forward is a large “almost” walk in cedar lined closet with a light, hidden storage, a digital safe and a dressing mirror inside the door.

At the foot of the berth is an upper cabinet with a built in RCA TV/VCR combo and a lower cabinet with a drawer and two curved doors below. Below is a Clarion AM/FM/CD player.

Also in this cabin are Clarion stereo speakers, a CO detector and six overhead mini halogen lights with two dedicated as reading lights.

Again AC is delivered via a valance over the berth for even air distribution.

---

## Master Head

---

Two steps up from the Master is the private Master Head with a custom Noche Travertine tile sole, mirrored overhead and a Raritan Atlantis head. The cherry vanity has one curved storage cabinet below the bow front Corian countertop and an under mount sink with Moen sink faucet above. Above is an opening stainless steel porthole behind a Duette shade with rope lighting for accent and three overhead mini spots. Above are four mirrored medicine cabinet doors and a mirror angled to the ceiling for perfect use. The stall shower has a hinged clear glass door, a handheld or wall mountable Grohe fixture, soap and shampoo dispenser, a light, an exhaust fan and a grab rail.

---

## Starboard Guest Cabin

---

Forward through the center Companionway and up three steps is the Starboard Guest Cabin with twin lower berths. Between the berths is a three drawer cherry nightstand with two brass swing arm lamps above. Beneath each berth is one large and two small drawers.

The outboard berth has two opening stainless steel portholes with drapes and five cherry cabinet doors above.

At the foot of the outboard berth is a cedar lined hanging locker with an auto light and a Sony DVD player within. A Panasonic 15" LCD TV and a Clarion AM/FM/CD stereo face the berths.

Also in this cabin are two reading lights, digital AC controls, two Clarion stereo speakers and rope accent lighting below the berth and at the valance. A hinged access panel gives great access to the back of the Helm and associated electronics. A hidden third Raymarine 215 DSC VHF to take the place of the Pilothouse or Icom VHF as needed.

---

## Guest Head to Port

---

Across the Companionway from the Starboard Guest Cabin is the Guest Head with two access doors, one from the center line Companionway, the other from the VIP. It features a custom Noche Travertine tile sole, bow front vanity cabinet with an under mount sink on the Avonite countertop. Above there are three mirror front medicine cabinets. Below the medicine cabinets is an opening stainless steel porthole with Duette shades. The toilet is a Raritan Atlantis model. The stall shower has a tempered glass door, handheld or wall mounted fixture, a light, a soap dispenser and an exhaust fan.

Plenty of mirrors including the overhead and three halogen mini spots offer excellent lighting.

---

## VIP Cabin

---

The VIP Cabin is all the way forward and rivals many Master Cabins of similar sized yachts. The

queen size berth with innerspring mattress is off the forward mirrored bulkhead with an upholstered headboard above. Below the berth are rope lights and two storage drawers facing aft. Above the berth is a round Bomar escape hatch with screen or privacy cover for emergency escape and ventilation and two separate halogen mini spots as reading lights. To both port and starboard are seven cherry cabinets. Below are full drapes and rope lights with one opening stainless steel porthole on each side. Built in cabinetry form nightstands both port and starboard. Aft to port is access to the Guest Head. Aft to starboard is a cedar lined hanging locker with auto light and a central vacuum outlet. On the aft bulkhead is a cherry wood cabinet with three drawers. Above is a built in RCA TV/VCR combo and storage locker. Also in this cabinet are eight dimmable overhead mini spots, two Clarion stereo speakers and AM/FM/CD Clarion stereo, digital AC controls and a hatch to the bow thruster area in the sole below.

## Foredeck

Fiberglass non skid decks Stainless steel 55 lb. Delta Plow anchor w/225' of 3/8" chain rode Lewmar Ocean Series anchor windlass w/up & down foot switches Bow roller & stainless steel anchor chute Chain locker hinged access hatch Freshwater anchor wash down spigot & hose Seawater anchor wash down spigot & hose Oversize welded stainless steel bow rails w/stainless steel lifeline (3) Windshield wipers w/washers International navigation lights White foil backed radiant barrier windshield cover Black Textulene windshield cover Side deck grab rails Port & starboard opening side gate in bow rail Dual spring line cleats port & starboard Stainless burgee staff Round Bomar deck hatch to VIP Stainless steel vertical boarding ladder mounts port & starboard, stows in Engine Room Dark tinted frameless cabin side windows (2) Custom stainless steel Fore Deck handrails at bow sun lounge White vinyl sun cushions & white Stamoid cover Lucite drink holders at bow cushion ITT Jabsco searchlight

## Aft Deck

(3) Teak steps port & starboard down to swim platform (2) Hinged stainless steel gates at platform stairs Four person aft bench seat w/Sunbrella cushions & Stamoid cover Fiberglass table w/hinged center section to access Engine Room from hinged center section of aft bench w/twin pedestals (2) White Resin chairs w/matching Sunbrella seat bottoms Teak sole w/removable hatch to service engines (7) Teak steps to Flybridge w/stainless steel handrail LED bullet lights at each step (2) Teak steps to side deck, port & starboard w/LED step lights Port & starboard coaming doors to access stern cleats, each with (2) stainless steel fair leads PAR pressure regulated water inlet in portside locker Glendinning cable master controls in starboard side locker TV/telephone inlet in starboard side locker Hydraulic platform controls in starboard side locker SSI hot & cold shower enclosure to starboard (2) Additional stainless steel stern cleats at transom 750 lb. Hydraulic fiberglass swim platform for tender storage Stainless steel flag pole w/ensign (3) Overhead stainless steel trimmed halogen lights Pioneer Two Stage stereo speakers w/separate tweeters Clarion FB stereo remote control on Aft Deck Raritan icemaker located under Flybridge steps Trend curved stainless steel trimmed entry door w/dark tinted glass Starboard side grill cabinet w/Electra Chef 220V electric grill w/roisserie & storage

below Cockpit fixed Bimini w/Textulene side curtains & separate Cockpit bench Textulene sun shade Stereo speakers connected to Flybridge stereo system & XM Sat radio

## Flybridge Deck

---

Fiberglass nonskid decks Neptunus fiberglass hardtop/arch combination Helm to starboard Unique sun lounge area w/cushions forward of Helm w/removable cushions Tinted Venturi windscreen Flybridge bar w/stainless steel sink & Norcold stainless steel refrigerator J Shaped flybridge seating w/removable Sunbrella cushions, white Stamoid cover & storage below for seating up to 6 people White fiberglass cocktail table Mounted life ring w/retrieval line Flares Fiberglass radar aft LED deck lighting KVH HD7 Sat dome Storage locker at Helm (2) Pioneer Two Stage stereo speakers w/separate tweeters (2) Upholstered adjustable helm chairs w/Stamoid covers w/storage area below Storage under helm seats White stamoid helm cover Khalenburg air horns w/automatic foghorn control switch Wood Dino tilt helm wheel w/cover Storage cabinet under bar Teak footrest at helm (3) Side EZ2CY clear polycarbonate enclosure Tempered glass panel in front of helm w/windshield wiper (5) Overhead stainless steel lights Stainless steel support pole forward w/hand holds

## Flybridge Helm Equipment

---

The Flybridge Helm features the following equipment:

Garmin 5212 touch screen plotter, 12" screen, Sirius weather & Sat radio ready w/antenna  
 Garmin 192C GPS color plotter, 6" screen Raymarine RL 80 C 72 mile color radar/plotter Simrad AP20 autopilot repeater Raymarine ST 60 digital speed log repeater Raymarine ST 60 digital depth finder repeater Raymarine ST 40 digital depth AIS receiver on Icom set to display on Garmin (2) LCD CAT engine displays Icom M504 VHF w/DSC Bennett trim tab controls Twin Disc electronic clutch & throttle controls w/synchronizer & trolling setting Vetus bow thruster controls (15 HP) ITT Jabsco searchlight controls (2) Weema fuel gauges Ritchie 5" Powerdamp Plus magnetic compass Hydraulic power assist steering Engine start/stop key switches 4 Station high water alarm w/(4) bilge pumps auto/manual switches Windlass remote controls 12 Volt outlet Fireboy engine shutdown override controls Poly Planer AM/FM/stereo receiver & CD player CAT backup engine control panel Storage cabinet at helm Garmin GPS antenna (2) Wema fuel gauges ITT Jabsco searchlight controls Windshield wiper on laminated safety glass panel at helm (2) Cup holders Icom Command Mic connected to main Icom VHF

## Lazarette

---

The Lazarette and the Engine Room are reached via lifting up the center section of the Aft Deck seating. A five teak tread stainless steel locker heads to the Lazarette with the Engine Room just forward behind a hinged door.

Lazarette equipment includes:

Timer for waste discharge pump AC fluorescent lighting DC incandescent lighting Five teak step stainless steel Lazarette access ladder Rudder gear under covered box GFCI outlet Access panels to bilge below Hydraulic power pack for swim platform Hydraulic pump for Bennett trim tabs

## Engine Room

Racor 75/1000 MA fuel filters for each engine w/vacuum gauges Twin Disc V drives, MG 5114, 2:05 to 1 ratio "Strong Seal" driplless shaft seals w/mounted spares 2 ½" stainless steel shafts 4 Blade bronze props mains 4 Blade bronze props spare mounted in Engine Room Dual actuator Bennett trim tabs 15 HP Vetus bow thruster Oil X Changer 5 Point oil change system for mains & generator & transmissions (2) 24,000 BTU Marine Air chillers (chilled water) Rheem 25 gallon hot water heater Airsep crankcase ventilation system Water tank electric gauge Waste tank electric gauge (2) Coolant recovery bottles for main engines Coolant recovery bottle for generator Engine driven Teleflex Sea Star power steering system Racor 500 fuel filter for generator Groco 3" main engine intake strainers w/ball valves AC fluorescent Engine Room lighting DC incandescent Engine Room lighting 110 Volt fresh water pump Wellsaver expansion tank for water system Shaft brushes for bonding Door between Engine Room & Lazarette w/window 57 lb. Fireboy Halon fire controls system Engine Room insulation behind perforated aluminum panels (2) 240V Engine Room blowers (3) Fiberglass mufflers Sanigard holding tank vent filter (2) 413 Gallon fuel tanks w/site gauges DeAngelo hard coat wrapped exhaust risers, risers & covers new 2013 (4) Rule 3700 bilge pumps Waste macerator pump Both turbos new 2013 Both after coolers replaced 2014 Workbench w/vice over AC units 4 Step stainless steel & teak tread boarding ladder Engines hand painted w/original Cat gloss polyurethane paint

## Electrical

12/24 Volt DC electrical system 110/220 Volt DC electrical system 17.5 KW Onan Generator in sound shield, 3951 hours (2) 4D Gel Cell12V batteries for 24V engine starting, thruster & windlass (2) 8D Gel Cell12V batteries for house service & generator starting 220 volt 50 amp Glendinning cable master w/60' cord in starboard cleat locker Charles Charger 24V 5000 series 30 amp battery charger for starting batteries, new 2011 Charles Charge 12V 5000 series 100 amp battery charger for house batteries, new 2011 Rex manufacturing 15 KVA isolation transformer LED DC volt meter LED AC volt meter LED DC amp meters LED AC amp meter Cable TV/telephone inlets in starboard cleat locker w/50' cord sets Neptunus DC panel w/42 breaker protected circuits w/indicator lights Neptunus 110V panel w/(16) breaker protected circuits w/indicator lights Neptunus 220V panel w/(8) double pole breaker protected circuits w/indicator lights A/B antenna switch Quicksilver galvanic isolator Fully bonded for electrolysis protection (2) Battery shut off switches Port engine alternator is 24V 60 amp output Starboard engine alternator is 12V 105 amp output Centrally located GFCI outlets for ease of resetting Battery switch in VIP to cut off power to bow thruster Having the Gel batteries located out of the

heat the of the Engine Room, they typically last 5 – 6 years before replacement. 2500 Watt Xantrex Prowatt 3000 inverter w/remote panel

---

## Construction Details

---

Solid fiberglass hull below the waterline Cored hull sides 19.5 Degree dead rise Fast efficient hull form One of the best sea kindly hulls in her class! Actual LOA 58'0"

---

## Remarks

---

MIMI is a very special 56' Neptunus. Her owners specified special fabrics, marble colors, Ultra Leathers, etc. to help MIMI stand out from her sisterships. Her original owners have kept her in top shape with all maintenance as required to keep her looking and running like new. Definitely worth a look!

---

## Exclusions

---

While every effort was made to list all pertinent included equipment aboard MIMI, there are some personal belongings aboard. Prospective purchasers should assume any item not specifically mentioned herein will not convey at closing.

---

## Exclusions

---

Owner's personal belongings.

---

## Disclaimer

---

The Company offers the details of this vessel or yacht in good faith but cannot guarantee or warrant the accuracy of this information nor warrant the condition of the vessel. A buyer should instruct his representatives, agents, or his surveyors, to investigate such details as the buyer desires validated. This vessel or yacht is offered subject to prior sale, price change, or withdrawal without notice.

# PHOTOS

**Salon Looking Forward**



**Salon Looking to Port**



**Salon Looking to Starboard**



**Salon Looking Aft**



**Galley Looking Forward**



**Galley Looking to Port**





**Galley Looking Aft**



**Dining Area**



**Lower Helm**



**Lower Helm**



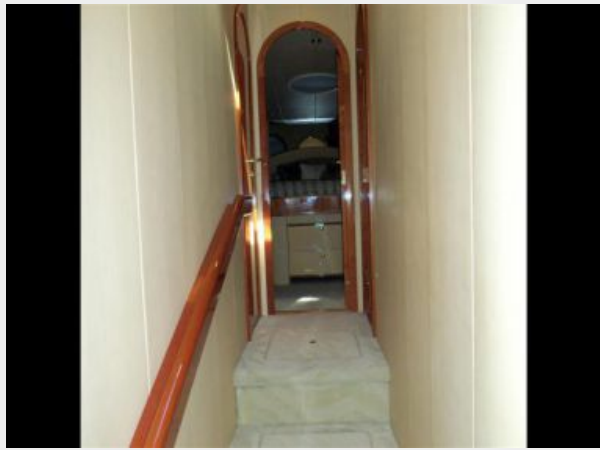
**Companionway**



**Companionway Laundry**



**Companionway Looking Forward**



**Master Looking Aft**



**Master Looking to Port**



**Master Looking to Starboard**



**Master Head**



**Master Head**



**Guest Cabin**



**Guest Head**



**VIP Looking Forward**



**VIP Looking to Port**



**VIP Looking to Starboard**



**VIP Looking Aft**



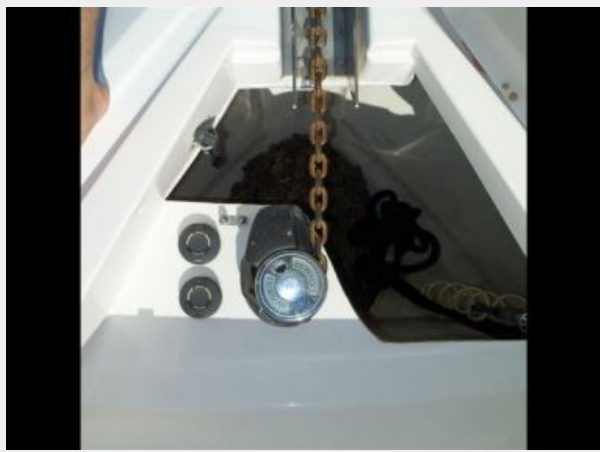
**Foredeck**



**Foredeck**



**Windlass**



**Anchor**



**Walk Around Side Deck**



**Aft Deck**



**Aft Deck**



**Aft Deck Seating**



**Custom Aft Deck Sunshade**



**Custom Aft Deck S/S Grill**



**Flybridge Access Stairs**



**Hydraulic Platform**



**Flybridge Bar**



**Flybridge Seating**



**Forward Flybridge Sun Lounge**



**Helm Area**



**Helm**



**Helm Detail Port**



**Helm Detail Starboard**



**Hardtop Equipment**



**Lazarette Engine Room Access**



**Lazarette**



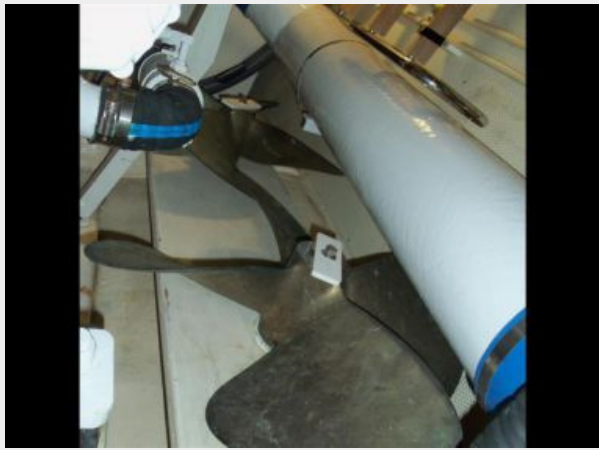
**Port Engine**



**Starboard Engine**



**Spare Prop**



**Immaculate Bilges**



**Workbench**



**Onan Generator**



**Running**



**Running**





## Running



# CONTACTS

---

Andrey Shestakov, leading yacht broker of the sales department of Shestakov Yacht Sales Inc. Shestakov Yacht Sales Inc., the official representative of the Miami/Fort Lauderdale FL headquarters.

## Contact details

---

Email: [andrey@shestakovyachtsales.com](mailto:andrey@shestakovyachtsales.com)

Web: [shestakovyachtsales.com/en/](http://shestakovyachtsales.com/en/)

## Telephones

---

USA: +1(954)274-4435

## Office hours

---

Monday – Saturday: **9:00 - 21:00** EDT

Sunday: **closed**

## Address

---



Harbour Towne Marina, 850 NE 3rd St,  
STE 213, Dania, FL 33004