

AZIMUT JUMBO — AZIMUT



Builder: [AZIMUT](#)

Year Built: 1994

Model: Mega Yacht

Price: PRICE ON APPLICATION

Location: Mexico

LOA: 100' 0" (30.48m)

Beam: 21' 11" (6.68m)

Max Draft: 5' 6" (1.68m)

Our experienced yacht broker, Andrey Shestakov, will help you choose and buy a yacht that best suits your needs **Azimut Jumbo — AZIMUT** from our catalogue. Presently, at Shestakov Yacht Sales Inc., we have a wide variety of yachts available on our sale's list. We also work in close contact with all the big yacht manufacturers from all over the world.

If you would like to buy a yacht **Azimut Jumbo — AZIMUT** or would like help answering any questions concerning purchasing, selling or chartering a yacht, please call **+1(954)274-4435**

TABLE OF CONTENTS

TABLE OF CONTENTS	2
SPECIFICATIONS	3
Overview	3
Basic Information	3
Dimensions	3
Speed, Capacities and Weight	3
Accommodations	4
Hull and Deck Information	4
Engine Information	4
PHOTOS	5
CONTACTS	11
Contact details	11
Telephones	11
Office hours	11
Address	11

SPECIFICATIONS

Overview

Electronics CD player Depthsounder Compass DVD player Wind speed and direction Radar GPS Log-speedometer Navigation center Plotter VHF Cockpit speakers Radio TV set Repeater(s) Computer **Inside Equipment** Battery charger Dishwasher Air compressor Marine head Oven Fresh water maker Air conditioning Electric bilge pump Bow thruster Electric head Manual bilge pump Deep freezer Chemical head Microwave oven Sea water pump Washing machine Hot water Heating Refrigerator **Electrical Equipment** Shore power inlet Inverter Generator **Outside Equipment/Extras** Tender Liferaft Cockpit table Wind generator Davits Solar panel Cockpit shower Gangway Cockpit cushions Outboard engine brackets Swimming ladder Hydraulic gangway **Covers** Bimini Top

Basic Information

Category: Mega Yacht

Model Year: 1994

Year Built: 1994

Country: Mexico

Fly Bridge: Yes

Cockpit: Yes

Dimensions

LOA: 100' 0" (30.48m)

Beam: 21' 11" (6.68m)

Max Draft: 5' 6" (1.68m)

Speed, Capacities and Weight

Displacement: 184800 Pounds

Water Capacity: 343.4236676 Gallons

Holding Tank: 237.7548468 Gallons

Fuel Capacity: 3645.5743176 Gallons

Accommodations

Total Cabins: 5

Total Berths: 12

Sleeps: 10

Total Heads: 6

Crew Cabin: 4

Crew Berths: 4

Crew Sleeps: 8

Crew Heads: 2

Hull and Deck Information

Hull Material: Fiberglass

Hull Configuration: Deep Vee

Hull Color: White

Exterior Designer: Stephano Righini

Engine Information

Engines: 2

Manufacturer: MTU

Model: 12V 331TC92

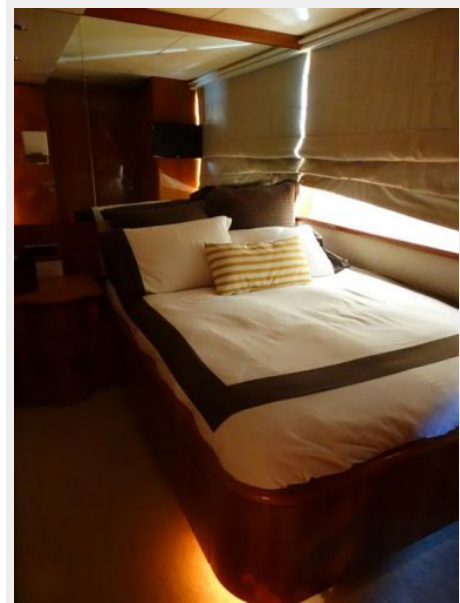
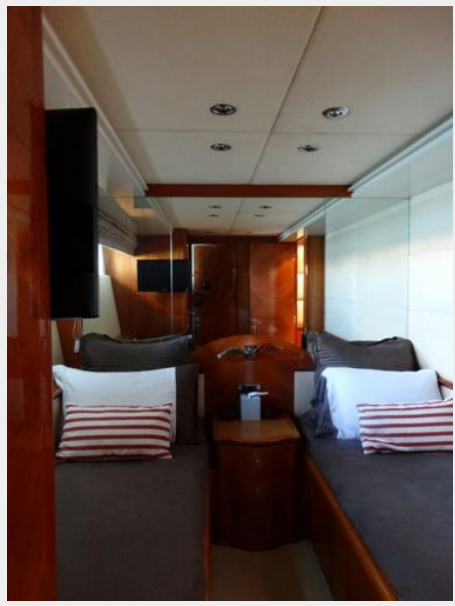
Engine Type: Inboard

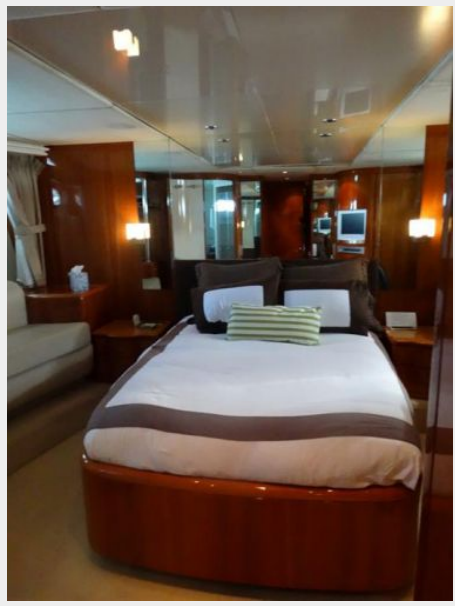
Fuel Type: Diesel

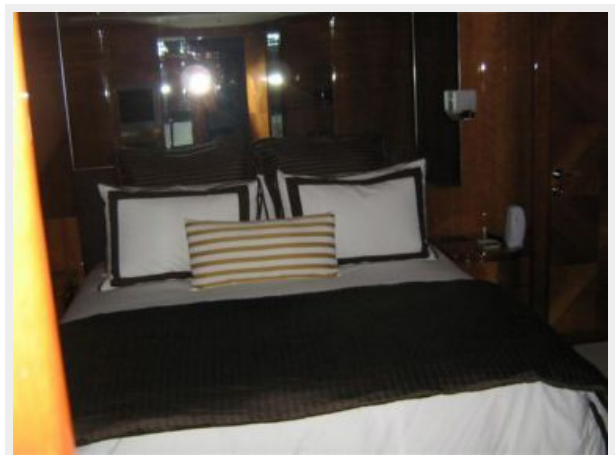
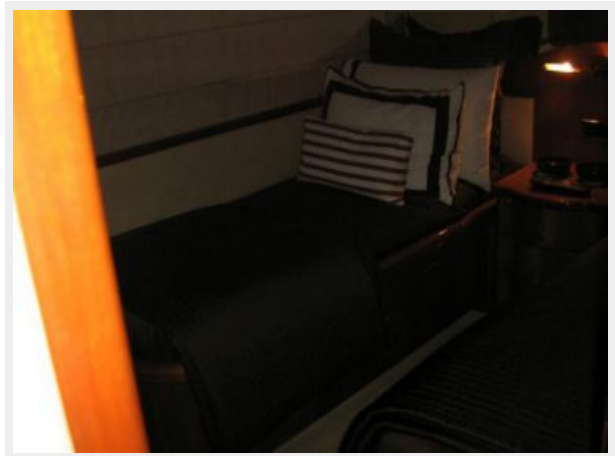
PHOTOS













CONTACTS

Andrey Shestakov, leading yacht broker of the sales department of Shestakov Yacht Sales Inc. Shestakov Yacht Sales Inc., the official representative of the Miami/Fort Lauderdale FL headquarters.

Contact details

Email: andrey@shestakovyachtsales.com

Web: shestakovyachtsales.com/en/

Telephones

USA: +1(954)274-4435

Office hours

Monday – Saturday: **9:00 - 21:00** EDT

Sunday: **closed**

Address



Harbour Towne Marina, 850 NE 3rd St,
STE 213, Dania, FL 33004