

PHUCNA — SKATER



Builder: SKATER

Year Built: 2013

Model: High Performance

Price: PRICE ON APPLICATION

Location: United States

LOA: 46' 0" (14.02m)

Beam: 12' 0" (3.66m)

Min Draft: 2' 0" (0.61m)

Max Draft: 3' 0" (0.91m)

Cruise Speed: 90 Kts. (104 MPH)

Max Speed: 151 Kts. (174 MPH)

Our experienced yacht broker, Andrey Shestakov, will help you choose and buy a yacht that best suits your needs **PHUCNA — SKATER** from our catalogue. Presently, at Shestakov Yacht Sales Inc., we have a wide variety of yachts available on our sale's list. We also work in close contact with all the big yacht manufacturers from all over the world.

If you would like to buy a yacht **PHUCNA — SKATER** or would like help answering any questions concerning purchasing, selling or chartering a yacht, please call **+1(954)274-4435**

TABLE OF CONTENTS

TABLE OF CONTENTS	2
SPECIFICATIONS	4
Basic Information	4
Dimensions	4
Speed, Capacities and Weight	4
Hull and Deck Information	4
Engine Information	4
DETAILED INFORMATION	5
Broker Remarks	5
Electronics & Navigation Equipment	5
Deck Equipment	5
Electrical Equipment	5
Engine Room/Mechanical Equipment	6
Other Features-Construction	6
Exclusions	6
Trailer	6
Additional Items Available for Purchase	7
Exclusions	7
Disclaimer	7
PHOTOS	8
Helm-Starboard	8
Helm	8
Gauges-Port	8
Helm Console	8
Starboard Trim Controls	8
VHF Radio/Intercom Jack	8
Starboard Storage	9
Speaker	9

Rear Seat Console	9
Four Passenger Back Seat	9
Fresh Water Flush System	9
Propellers	9
Boat Name	9
"Pop Up" Cleats/"Pin" Receiver	9
Port Engine	10
Custom Painted Motors	10
Starboard Engine	10
Starboard Engine Aft	10
Engine Oil Reservoir	10
Profile at Dock	10
Profile on Trailer	10
Trailer	10
Trailer-Transom View	11
Boarding Steps on Trailer	11
Trailer	11
Built-in Tool Boxes on Trailer	11
Custom Hydro Hoist Boat Lift	11
2009 Freightliner Sport Chasis	11
CONTACTS	12
Contact details	12
Telephones	12
Office hours	12
Address	12

SPECIFICATIONS

Basic Information

Category: High Performance

Model Year: 2013

Year Built: 2013

Country: United States

Vessel Top: Open

Dimensions

LOA: 46' 0" (14.02m)

Beam: 12' 0" (3.66m)

Min Draft: 2' 0" (0.61m)

Max Draft: 3' 0" (0.91m)

MFG Length: 45' 7" (13.89m)

Speed, Capacities and Weight

Cruise Speed: 90 Kts. (104 MPH)

Cruise Speed RPM: 5000 Kts.

Max Speed: 151 Kts. (174 MPH)

Max Speed RPM: 6800 Kts.

Displacement: 50000 Pounds

Fuel Capacity: 600 Gallons

Hull and Deck Information

Hull Material: Fiberglass

Hull Designer: Douglas Skater

Engine Information

Engines: 2

Manufacturer: Sterling

Model: EFI/Supercharged 557CID

Engine Type: I/O

Fuel Type: Gas

DETAILED INFORMATION

Broker Remarks

This boat was "dialed in/made ready" by World Champion Powerboat racer Johnny Tomlinson at TnT Marine. Boat has had the best of care since day one. Very meticulous owner/crew! If you want to cruise all day @ 100 MPH, in a boat that feels like a stretch limo, this boat delivers a smooth ride and lands softly! Everything you need for your next "Poker Run" to be out front with the faster boats! This is a "turn key" operation without the wait and decisions of building a new boat.

**REPLACEMENT COST IN TODAY'S MARKET APPROXIMATELY
\$900,000!**

Electronics & Navigation Equipment

- Standard Horizon Explorer VHF
- Garmin GPS 5215 chart plotter
- Livorsi GPS Speedo (w/recall)
- Alpine LDA 118M AM/FM, SAT, iPod, USB stereo w/4 JL Audio speakers
- David Clark Series 9800 intercom/stereo headset system for all 6 passengers
- Hi-Performance cable driven indicators for drives/tabs
- Steering wheel interchangeable with port/starboard side helm

Deck Equipment

- Mooring covers
- Fiberglass deck
- Retractable navigation lights
- (6) Pop up style cleats
- (6) "Pin" receivers to deploy fenders easily
- Four point lift system to haul/launch by crane w/hooks
- Custom air vents (concealed) for engine room

Electrical Equipment

- (2) Optima batteries and built-in battery charger (40 amp). Note: these are located in the engine compartments, hatches operate with battery switch off for easy access.
- 12V DC
- 110V AC

Engine Room/Mechanical Equipment

- Sterling EFI/Supercharged 557CID Engines (10 hrs since rebuild/refresh)
- Mercury #6 outdrives
- (2) Bilge blowers
- (2) Automatic bilge pumps
- Emergency engine alarm
- Halon fire extinguishing system
- Fuel shut off valve
- Hydraulic steering
- BAM transmission
- Raw water sea strainer
- Extra large oil reservoirs
- Custom painted shaft enclosures
- Drive/tab controls for "pilot" & "co-pilot"
- Electric engine hatches
- Electric fuel priming pumps
- Kill switches
- Merc extended K planes
- Extra large Stainless Steel tie bar for drivers

Other Features-Construction

- Removable cockpit carpeting
- Constructed using vacuum bagged technology - glass/Kevlar/Carbon/aircraft grade Balsa core sandwich and epoxy resin gives superb strength. This boat was custom built for a World Champion Powerboat Racer, to be used for pleasure and Poker Runs. It has never been raced. This Pleasure CAT can run on many different grades of fuel: pump gas, C-16 or CAMII. Boat comes with different sets of pulleys for this easy conversion.

Exclusions

- Personal belongings & tools

Trailer

- Skater 2013 Triple Axel Goose Neck Trailer
- Tool boxes
- Steps to board
- Electric brakes
- (2) Spare tires

- Heavy duty hydraulic landing gear

Additional Items Available for Purchase

The following items can be purchased, with the boat, for an additional price TBD:

Truck - Freightliner Sport Chasis 2009 - 20,406 miles GCWR 33,000 lbs

- Back up cameras
- Cruise control
- Power windows
- Rear AV system
- Leather seats
- Pioneer AM/FM CD
- CB radio

Custom Hydro Hoist Boat Lift

Exclusions

Owner's personal belongings.

Disclaimer

The Company offers the details of this vessel or yacht in good faith but cannot guarantee or warrant the accuracy of this information nor warrant the condition of the vessel. A buyer should instruct his representatives, agents, or his surveyors, to investigate such details as the buyer desires validated. This vessel or yacht is offered subject to prior sale, price change, or withdrawal without notice.

PHOTOS

Helm-Starboard



Helm



Gauges-Port



Helm Console



Starboard Trim Controls



VHF Radio/Intercom Jack



Starboard Storage



Speaker



Rear Seat Console



Four Passenger Back Seat



Fresh Water Flush System



Propellers



Boat Name



"Pop Up" Cleats/"Pin" Receiver



Port Engine



Custom Painted Motors



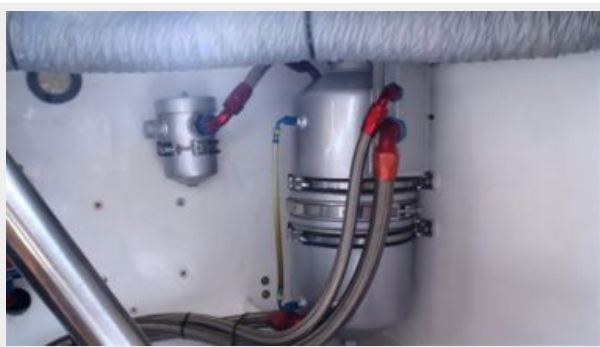
Starboard Engine



Starboard Engine Aft



Engine Oil Reservoir



Profile at Dock



Profile on Trailer



Trailer



Trailer-Transom View



Boarding Steps on Trailer



Trailer



Built-in Tool Boxes on Trailer



2009 Freightliner Sport Chasis



Custom Hydro Hoist Boat Lift



CONTACTS

Andrey Shestakov, leading yacht broker of the sales department of Shestakov Yacht Sales Inc. Shestakov Yacht Sales Inc., the official representative of the Miami/Fort Lauderdale FL headquarters.

Contact details

Email: andrey@shestakovyachtsales.com

Web: shestakovyachtsales.com/en/

Telephones

USA: +1(954)274-4435

Office hours

Monday – Saturday: **9:00 - 21:00** EDT

Sunday: **closed**

Address



Harbour Towne Marina, 850 NE 3rd St,
STE 213, Dania, FL 33004