

GRACEFUL VOYAGER — CALIFORNIAN



Builder: CALIFORNIAN

LOA: 48' 0" (14.63m)

Year Built: 1988

Model: Motor Yacht

Price: PRICE ON APPLICATION

Location: United States

Our experienced yacht broker, Andrey Shestakov, will help you choose and buy a yacht that best suits your needs **Graceful Voyager — CALIFORNIAN** from our catalogue. Presently, at Shestakov Yacht Sales Inc., we have a wide variety of yachts available on our sale's list. We also work in close contact with all the big yacht manufacturers from all over the world.

If you would like to buy a yacht **Graceful Voyager — CALIFORNIAN** or would like help answering any questions concerning purchasing, selling or chartering a yacht, please call **+1(954)274-4435**

TABLE OF CONTENTS

TABLE OF CONTENTS	2
SPECIFICATIONS	3
Overview	3
Basic Information	4
Dimensions	4
Speed, Capacities and Weight	4
Accommodations	4
Hull and Deck Information	4
Engine Information	4
PHOTOS	5
CONTACTS	10
Contact details	10
Telephones	10
Office hours	10
Address	10

SPECIFICATIONS

Overview

A beautiful example of a classic design Sundeck Motor yacht in excellent condition. There have been many recent up-grades which present an opportunity for a cruise ready quality vessel. When you visit the "Graceful Voyager", you will realize your search is over, look no more! This vessel offer's three state room's, three head /with separate shower's. The galley and dinette are down, offers also a very large salon with a entertainment center w/flat screen tv and stereo system. The wide beam is evident through-out , including the hard-top covered sin-deck area, seating for 8 guest's. **Boat Name** Graceful Voyager **Specs** Builder: Californian Hull Shape: Semi-Displacement **Dimensions** LOA: 48 ft 0 in Beam: 14 ft 8 in Minimum Draft: 4 ft 8 in Bridge Clearance: 17 ft 0 in Headroom: 6 ft 8 in Deadrise: 11 ° at Transom Freeboard: 5 ft 0 in Dry Weight: 55000 lbs **Engines** Engine 1: Engine Brand: Caterpillar Year Built: 1988 Engine Model: 3208 Engine Type: Inboard Engine/Fuel Type: Diesel Location: Port Engine Hours: 2200 Drive Type: Direct Drive Engine(s) Total Power: 375 HP Engine 2: Engine Brand: caterpillar Year Built: 1988 Engine Model: 3208 Engine Type: Inboard Engine/Fuel Type: Diesel Location: Starboard Engine Hours: 2200 Drive Type: Direct Drive Engine(s) Total Power: 375 HP **Tanks** Fresh Water Tanks: 1 Plastic (210 Gallons) Fuel Tanks: 2 Aluminum (535 Gallons) Holding Tanks: 1 Plastic (76 Gallons) **Accommodations** Number of double berths: 3 Number of cabins: 3 Number of heads: 3 Seating Capacity: 10 **Electronics** TV set - w/ blueray VHF - 3 vhf radio's Depthsounder Compass - 2x 6in Richie Radio - stero w/ speakers Radar - 16 mile rattheon Plotter - new garmin 740 12/13 GPS DVD player - Blue ray **Inside Equipment** Oven - convection Bow thruster - 24 volt w/ charger Washing machine - and dryer /stack Heating Hot water - 20 gal quick recovery Battery charger - 40 amp Refrigerator - full sise stand-up frige -freezer Air conditioning - 3 units 15,000btu, two are reverse cycle Sea water pump - emergency manual Marine head - 3 Vacu-flush /3yrs old Electric bilge pump - 3 auto/manual 1500 gph **Electrical Equipment** Shore power inlet - 2x 30amp Generator - Onan 15kw,sound cover Electrical Circuit: 12V **Outside Equipment/Extras** Swimming ladder Tender - 12ft Livingston/ platform mount swing-up Electric windlass **Covers** Bimini Top - all new canvas/ isenglass Dec 13

Broker's comment

The bottom is in perfect condition, fresh paint, new cutlass bearing, prop's balances 12/13. all new canvas and isinglass 12/13. new s/s anchor 12/13. new holding tank 12/13. vacu-flush (3) head's 3 yrs,new a/c pump, new Garmin gps chart plotter 740 12/13.

Vessel features a lower station and bridge station, rear hard-top cover sun deck, w/ full isinglass curtains, hard lexan wing doors to side deck walk, wet/bar and frig., grill . fantastic seating with full beam deck, enjoy sports w/ TV w/blue-ray, full stereo w/ speakers. (and bar)

Access to dingy through taft rail door to ladder to swim platform. Seating in the fly bridge is gained by four steps up , and a 2 helm seat's and room for six guests.

This vessel shows extremely well and has much desired space and detail through-out.

Basic Information

Category: Motor Yacht

Model Year: 1988

Year Built: 1988

Country: United States

Fly Bridge: Yes

Dimensions

LOA: 48' 0" (14.63m)

Speed, Capacities and Weight

Displacement: 55000 Pounds

Water Capacity: 210 Gallons

Holding Tank: 76 Gallons

Fuel Capacity: 535 Gallons

Accommodations

Total Cabins: 3

Hull and Deck Information

Hull Material: Fiberglass

Engine Information

Engines: 2

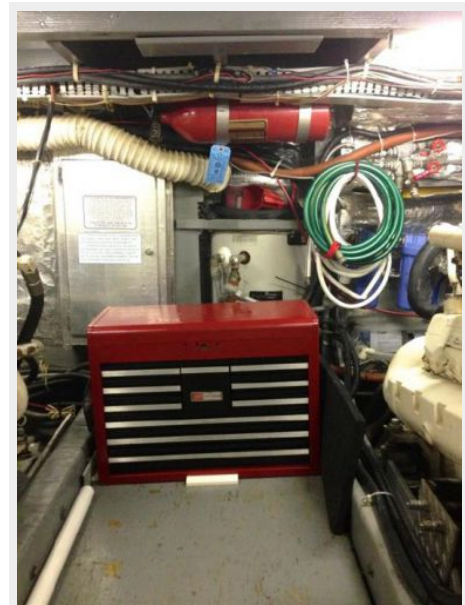
Manufacturer: Caterpillar

Model: 3208

Engine Type: Inboard

Fuel Type: Diesel

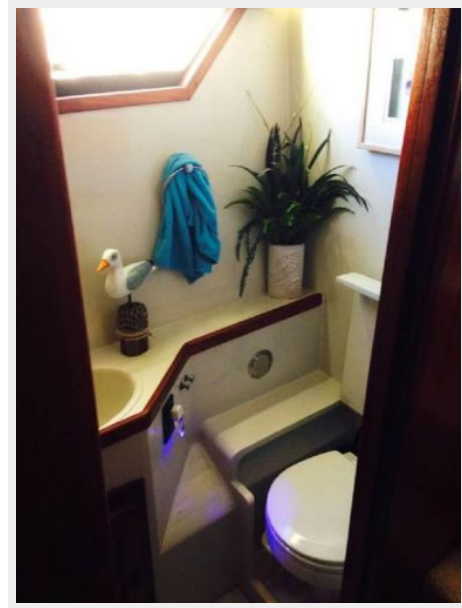
PHOTOS











CONTACTS

Andrey Shestakov, leading yacht broker of the sales department of Shestakov Yacht Sales Inc. Shestakov Yacht Sales Inc., the official representative of the Miami/Fort Lauderdale FL headquarters.

Contact details

Email: andrey@shestakovyachtsales.com

Web: shestakovyachtsales.com/en/

Telephones

USA: +1(954)274-4435

Office hours

Monday – Saturday: **9:00 - 21:00** EDT

Sunday: **closed**

Address



Harbour Towne Marina, 850 NE 3rd St,
STE 213, Dania, FL 33004