

SEA DATE — SEA RAY



Builder: [SEA RAY](#)

Year Built: 1993

Model: Cruiser

Price: PRICE ON APPLICATION

Location: United States

LOA: 44' 0" (13.41m)

Beam: 13' 11" (4.24m)

Max Draft: 3' 3" (0.99m)

Cruise Speed: 20 Kts. (23 MPH)

Our experienced yacht broker, Andrey Shestakov, will help you choose and buy a yacht that best suits your needs **Sea Date — SEA RAY** from our catalogue. Presently, at Shestakov Yacht Sales Inc., we have a wide variety of yachts available on our sale's list. We also work in close contact with all the big yacht manufacturers from all over the world.

If you would like to buy a yacht **Sea Date — SEA RAY** or would like help answering any questions concerning purchasing, selling or chartering a yacht, please call **+1(954)274-4435**

TABLE OF CONTENTS

TABLE OF CONTENTS	2
SPECIFICATIONS	4
Basic Information	4
Dimensions	4
Speed, Capacities and Weight	4
Accommodations	4
Hull and Deck Information	4
Engine Information	5
DETAILED INFORMATION	6
Galley	6
Electrical Equipment	6
Engine Room	6
Deck Equipment	6
Electronics	7
Head	7
Exclusions	7
Remarks	7
Manufacturer Provided Description	7
Exclusions	8
Disclaimer	8
PHOTOS	9
Profile 3	9
Profile 2	9
Transom	9
Underway	9
Helm Seating	9
Lift Kept	9
Helm	10

Galley	10
Second Stateroom	10
Master Stateroom	10
Salon Second View	10
Salon	10
Head	11
Shower Stall	11
Generator	11
Engineroom	12
Transom Shower	12
Windlass and Remote Spotlight	12
Running Gear	12
CONTACTS	13
Contact details	13
Telephones	13
Office hours	13
Address	13

SPECIFICATIONS

Basic Information

Category: Cruiser

Sub Category: Express

Model Year: 1993

Year Built: 1993

Country: United States

Dimensions

LOA: 44' 0" (13.41m)

Beam: 13' 11" (4.24m)

Max Draft: 3' 3" (0.99m)

Speed, Capacities and Weight

Cruise Speed: 20 Kts. (23 MPH)

Cruise Speed RPM: 2200 Kts.

Displacement: 20000 Pounds

Water Capacity: 100 Gallons

Holding Tank: 20 Gallons

Fuel Capacity: 400 Gallons

Accommodations

Total Cabins: 2

Total Berths: 2

Total Heads: 1

Hull and Deck Information

Hull Material: Fiberglass

Engine Information

Engines: 2

Manufacturer: Cummins

Engine Type: Inboard

Fuel Type: Diesel

DETAILED INFORMATION

Galley

Fully functional galley with all the conveniences needed to cook and entertain

- Microwave
- three burner cooktop
- Built in coffee maker
- Built in NuTone blender
- Ample storage
- Large sink
- Fridge

Electrical Equipment

- Westerbeke 8 kw gen set w/351 hrs 8/7/13
- Battery Charger new approx 3 years ago
- Shore power
- Inverter
- AC
- Central Vac w/ hoses and attachments

Engine Room

- Twin 300 HP Cummins Diesel 1,700 HRS They have had the recommended 1000 hr major sevice
- Engine hoses replaced approx 1 year ago
- Racor filters
- Full set of manuals onboard
- 3 blade props
- Set of spare props
- Oil change system
- Hot water heater
- Halon fire system
- Prop pockets to keep draft to a minimum

Deck Equipment

- Remote spotlight
- Docking lights

- Trim tabs
- Windlass , vessel comes with a spare anchor
- Power windshield vent
- Swim platform w/ladder, access through transom door
- H/C shower on transom
- Bimini new approx 4 years ago
- Seat cushions new approx 5 years ago
- Raritan Cockpit ice maker
- Sony Cockpit speakers

Electronics

- Raytheon Radar
- Auto Pilot St 8002
- Raytheon L760
- Dome antenna for radar
- VHF
- Compass
- Kenwood Stereo
- CD Changer
- Kenwood VCR
- Cockpit and Salon Speakers

Head

- Vacu Flush toilet
- Separate Shower stall

Exclusions

Personal items onboard such as the tool kits are excluded from the sale.

Remarks

Note this model went from being the 420 to a 440 in 1993 The 440 model has hull pockets, the 420 does not.

Manufacturer Provided Description

At 44 feet in length, the Sea Ray 440 Sundancer looks more like a cruise liner than a sport yacht.

Then again, it has almost as much room. On deck is a spacious cockpit with ample bench seating for friends and family - perfect for relaxing in the sun. There's also a wetbar for refreshment on those hot summer days. Just a few steps below, more relief from the sun comes in the form of an inviting salon with a convertible nine-foot sofa and optional air conditioning. In the master stateroom, there's a queen-sized bed. And for the chef, the fully equipped galley has everything needed to fix a late night snack or a full course meal.

Exclusions

Owner's personal belongings.

Disclaimer

The Company offers the details of this vessel or yacht in good faith but cannot guarantee or warrant the accuracy of this information nor warrant the condition of the vessel. A buyer should instruct his representatives, agents, or his surveyors, to investigate such details as the buyer desires validated. This vessel or yacht is offered subject to prior sale, price change, or withdrawal without notice.

PHOTOS

Profile 2



Profile 3



Underway



Transom



Lift Kept



Helm Seating



Helm



Galley



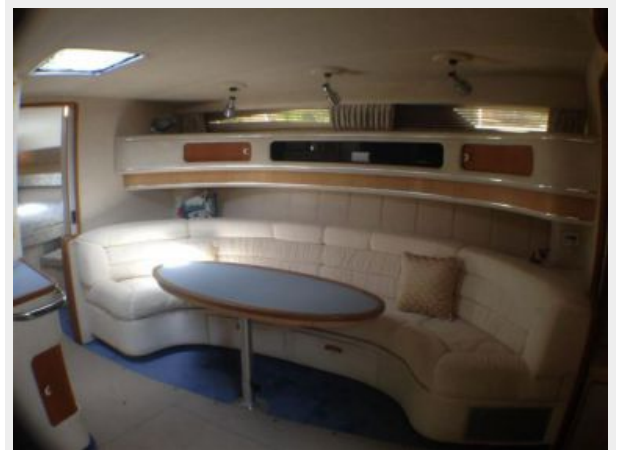
Second Stateroom



Master Stateroom



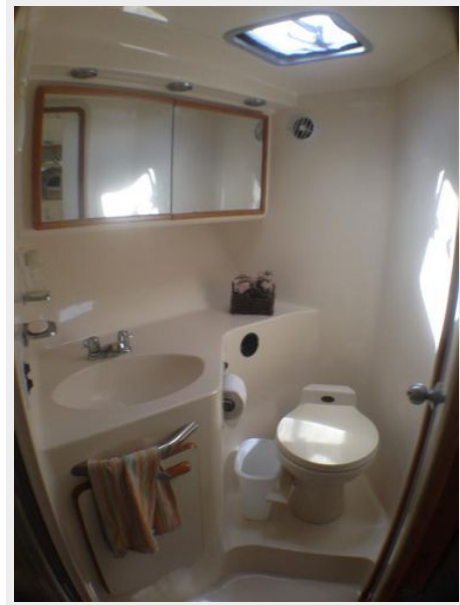
Salon Second View



Salon



Head



Shower Stall



Generator



Engine room



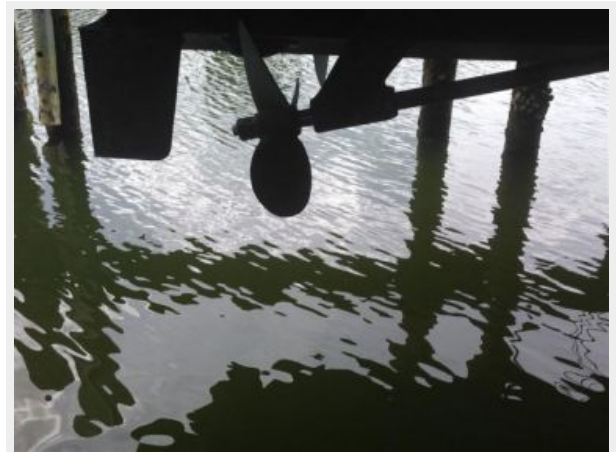
Transom Shower



Windlass and Remote Spotlight



Running Gear



CONTACTS

Andrey Shestakov, leading yacht broker of the sales department of Shestakov Yacht Sales Inc. Shestakov Yacht Sales Inc., the official representative of the Miami/Fort Lauderdale FL headquarters.

Contact details

Email: andrey@shestakovyachtsales.com

Web: shestakovyachtsales.com/en/

Telephones

USA: +1(954)274-4435

Office hours

Monday – Saturday: **9:00 - 21:00** EDT

Sunday: **closed**

Address



Harbour Towne Marina, 850 NE 3rd St,
STE 213, Dania, FL 33004