

## MAKE AN OFFER! — SEA RAY



**Builder:** SEA RAY

**Year Built:** 1994

**Model:** Motor Yacht

**Price:** PRICE ON APPLICATION

**Location:** United States

**LOA:** 55' 0" (16.76m)

**Beam:** 15' 0" (4.57m)

**Max Draft:** 4' 2" (1.27m)

Our experienced yacht broker, Andrey Shestakov, will help you choose and buy a yacht that best suits your needs **Make an Offer!** — **SEA RAY** from our catalogue. Presently, at Shestakov Yacht Sales Inc., we have a wide variety of yachts available on our sale's list. We also work in close contact with all the big yacht manufacturers from all over the world.

If you would like to buy a yacht **Make an Offer!** — **SEA RAY** or would like help answering any questions concerning purchasing, selling or chartering a yacht, please call **+1(954)274-4435**

---

# TABLE OF CONTENTS

---

TABLE OF CONTENTS	2
SPECIFICATIONS	3
Overview	3
Basic Information	3
Dimensions	3
Speed, Capacities and Weight	3
Accommodations	3
Hull and Deck Information	4
Engine Information	4
DETAILED INFORMATION	5
Manufacturer Provided Description	5
Exclusions	5
Disclaimer	5
PHOTOS	6
CONTACTS	15
Contact details	15
Telephones	15
Office hours	15
Address	15

---

# SPECIFICATIONS

---

## Overview

---

- Expansive indoor and outdoor accommodations make the SeaRay 550 a very popular cruiser.
- "HUNTER 1" boasts the highly desirable 3 stateroom layout.
- This boat is in good condition, well maintained and a "MUST SEE" for anyone looking for a vessel this size or larger.
- Original hours

## Basic Information

---

**Category:** Motor Yacht

**Sub Category:** Flybridge

**Model Year:** 1994

**Year Built:** 1994

**Country:** United States

## Dimensions

---

**LOA:** 55' 0" (16.76m)

**Beam:** 15' 0" (4.57m)

**Max Draft:** 4' 2" (1.27m)

## Speed, Capacities and Weight

---

**Displacement:** 45700 Pounds

**Water Capacity:** 200 Gallons

**Holding Tank:** 68 Gallons

**Fuel Capacity:** 700 Gallons

## Accommodations

---

**Total Cabins:** 3

**Total Berths:** 8

---

## Hull and Deck Information

---

**Hull Material:** Fiberglass

## Engine Information

---

**Engines:** 2

**Manufacturer:** Detroit Diesel

**Model:** 6V-92 TA

**Engine Type:** Inboard

**Fuel Type:** Diesel

---

# DETAILED INFORMATION

---

## Manufacturer Provided Description

---

The Sea Ray 550 Sedan Bridge combines the performance and advanced styling of a Sedan Bridge with the spacious and elegant liveboard accommodations of a 55-foot luxury yacht. The 22-foot flybridge offers seating for eight. The large bridge features an advanced bridge control station, snap-in carpet, an adjustable captain's chair, and two companion helm seats. Additional seating is found on the bridge bench seat, near the bridge entertainment center, which is complete with an ice maker and stereo. For navigating in inclement weather, a standard lower helm station is found in the salon. From the flybridge, the fiberglass companionway provides wide, non-skid textured steps to the cockpit area. Through-bolted stainless steel grab rails ensure an extra measure of safety. In the cockpit, guests can relax in upholstered aft corner banquettes, separated by a center transom door that leads out to the swim platform. From the cockpit, a large glass sliding door leads to the cabin featuring 66-ounce Masland carpeting. To port is the entertainment center and a comfortable easy chair. To starboard, a 10-foot wraparound sofa provides seating for several passengers. The sofa will also serve as comfortable sleeping accommodations for two adults. The galley comes complete with a three-burner cooktop, microwave - convection oven, refrigerator - freezer, and lots of counter space. To port, meals are served amid a spectacular view. Forward and down three carpeted steps, lie the staterooms. The spacious master suite includes a full-size island bed with custom coordinated linens, and plentiful storage underneath. Multiple storage lockers and shelves, a large mirrored vanity with storage drawers, and a private head with vanity and shower complete the stateroom. Directly above the bed, a screened translucent deck hatch provides natural light and fresh air, as desired. To port, the crew quarters provide comfortable sleeping for two. The berth also includes a washer - dryer, convenient to both upper and lower decks, as is the central vacuum system. The guest head is also portside, and includes a vanity and shower. In the starboard stateroom, guests enjoy a full-size berth with storage lockers underneath and overhead, a convenient vanity and cedar-lined hanging locker.

## Exclusions

---

Owner's personal belongings.

## Disclaimer

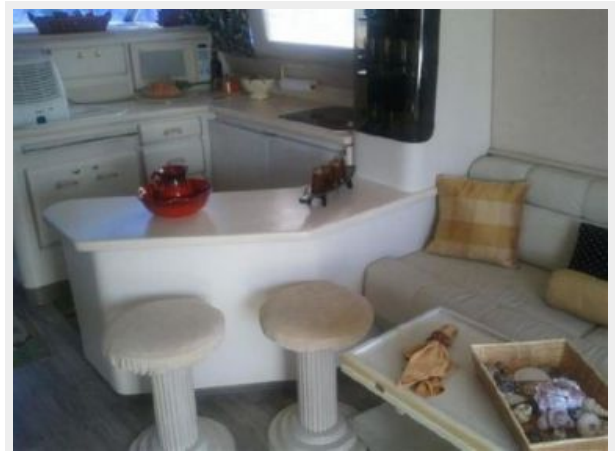
---

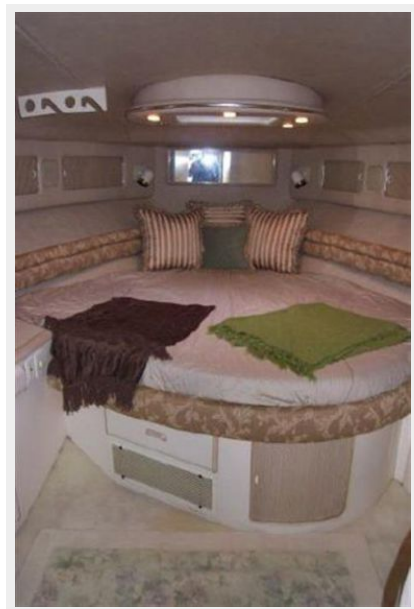
The Company offers the details of this vessel or yacht in good faith but cannot guarantee or warrant the accuracy of this information nor warrant the condition of the vessel. A buyer should instruct his representatives, agents, or his surveyors, to investigate such details as the buyer desires validated. This vessel or yacht is offered subject to prior sale, price change, or withdrawal without notice.

# PHOTOS









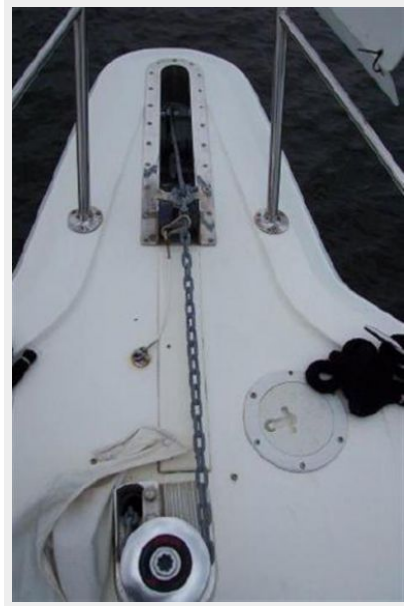


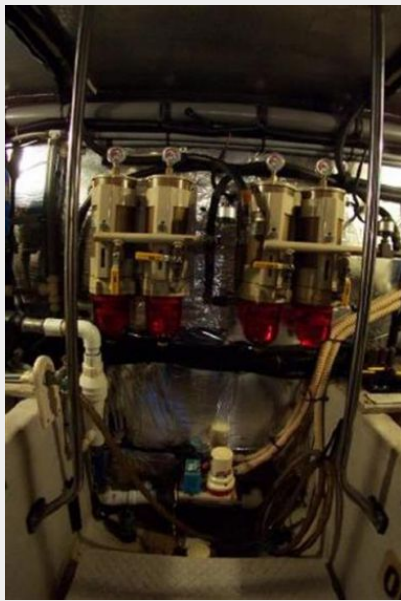




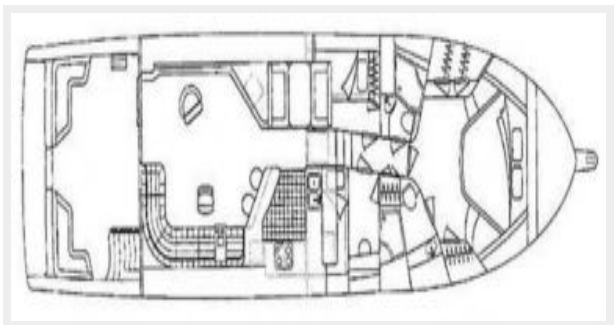












# CONTACTS

---

Andrey Shestakov, leading yacht broker of the sales department of Shestakov Yacht Sales Inc. Shestakov Yacht Sales Inc., the official representative of the Miami/Fort Lauderdale FL headquarters.

## Contact details

---

Email: [andrey@shestakovyachtsales.com](mailto:andrey@shestakovyachtsales.com)

Web: [shestakovyachtsales.com/en/](http://shestakovyachtsales.com/en/)

## Telephones

---

USA: +1(954)274-4435

## Office hours

---

Monday – Saturday: **9:00 - 21:00** EDT

Sunday: **closed**

## Address

---



Harbour Towne Marina, 850 NE 3rd St,  
STE 213, Dania, FL 33004