

## HAT-ATTUDE — HATTERAS



**Судостроитель:** HATTERAS

**Год постройки:** 1998

**Модель:** Моторная яхта

**Цена:** ЦЕНА ЯХТЫ ПО ЗАПРОСУ

**Местонахождение:** United States

**Длина общая:** 50' 0" (15.24m)

**Ширина:** 16' 0" (4.88m)

**Макс. осадка:** 5' 6" (1.68m)

Купить **HAT-ATTUDE — HATTERAS** а также выбрать подходящую вам яхту из нашего каталога яхт вам поможет опытный яхтенный брокер Андрей Шестаков. На сегодняшний день компания **Shestakov Yacht Sales Inc.** имеет большое количество яхт в собственном списке продаж, а также тесно сотрудничает со всеми крупными яхтенными производителями по всему миру.

Для того чтобы купить яхту **HAT-ATTUDE — HATTERAS** а также проконсультироваться по любому вопросу связанному с покупкой, продажей, чартером яхт позвоните по телефону **+7(918)465-66-44**.

# ОГЛАВЛЕНИЕ

---

ОГЛАВЛЕНИЕ	2
ХАРАКТЕРИСТИКИ	5
Основная информация	5
Размеры	5
Скорость, вместимость и масса	5
Размещение	5
Корпус и палуба	5
Информация о двигателе	6
ПОДРОБНОЕ ОПИСАНИЕ	7
Broker Comments	7
Vessel Walk Thru	7
Finish	7
Hardware and Miscellaneous	8
Engine Compartment and Bilge	9
Electrical Equipment	10
Flybridge	11
Aft Deck	11
Deckhouse Salon	12
Galley/Dinette	13
Master Stateroom	13
Bow VIP Stateroom	14
Master and Guest Heads	15
Electronics and Navigational Equipment	15
Updates and Upgrades	16
Исключения	16
Отказ от ответственности	16
ФОТОГРАФИИ	18
Salon	18

Salon	18
Salon	18
Salon	18
Salon	19
Salon	19
Galley	19
Salon	19
Galley	19
Galley	19
Dinette	20
Master Stateroom	20
Master Stateroom	20
Master Stateroom	20
Master Stateroom Closet	20
Master Stateroom	20
Washer/Dryer	21
Master Stateroom	21
Vip Stateroom	21
Vip Stateroom	21
Flybridge Radar	21
Flybridge Control Station	21
Flybridge Seating	22
Flybridge GPS	22
Flybridge Seating	22
Flybridge with Davit	22
Aft Deck Wet Bar	22
Aft Deck	22
Engine Room	23
Aft Deck	23

---

Engine Room Generator with Sound Shield	23
Engine Room	23
Out of Water when Bottom Painted October 2013	24
Engine Room	24
Layout	24
КОНТАКТЫ	25
Контактная информация	25
Телефоны	25
Время работы	25
Адрес	25

# ХАРАКТЕРИСТИКИ

## Основная информация

Тип судна: Моторная яхта

Модельный год: 1998

Год постройки: 1998

Страна: United States

Верх: Hardtop

Открытая палуба мостика: Да

## Размеры

Длина общая: 50' 0" (15.24m)

Ширина: 16' 0" (4.88m)

Макс. осадка: 5' 6" (1.68m)

## Скорость, вместимость и масса

Вместимость воды: 170 Gallons

Вместимость сточного бака: 100 Gallons

Объем топливного бака: 667 Gallons

## Размещение

Всего кают: 2

Всего коек: 2

Спальные места: 4

Всего ком. состава: 2

## Корпус и палуба

Материал корпуса: Fiberglass

Цвет корпуса: White

Отделка корпуса: Fiberglass

## Информация о двигателе

---

**Производитель:** Detroit Diesel

**Модель:** 6V92TA

**Тип двигателя:** Inboard

**Тип топлива:** Diesel

---

# ПОДРОБНОЕ ОПИСАНИЕ

---

## Broker Comments

---

The true standard of beauty in yacht design is how well an individual layout enhances your enjoyment on the water. It is measured not being just on the water, but in and around it as well. Hat-Attude is the perfect yacht for cruising the intracoastal, going to the Keys, and of course island hopping in the Bahamas. The aft deck is the best place to sit and enjoy the breathtaking island sunsets. The curved stairway to the swim platform makes snorkeling, and swimming, a breeze. This 50 Hatteras Sportdeck has been very well maintained by a very experienced owner. Hat-Attude is priced to sell. When aboard in the interior you will be amazed at the interior volume, and you will think you are aboard the new Hatteras 60 Motor Yacht. Hat-Attude is a must see if you are looking for a Spacious Quality Motor Yacht!

## Vessel Walk Thru

---

Topside the Flybridge Layout provides room for conversation while underway, and is ergonomically designed for full circle visibility. A few steps below, the 150 square foot fully enclosed covered aft deck provides an excellent area to enjoy the views either dockside or underway. It is fully air conditioned along with a wetbar and icemaker. Just a few steps down from the aft deck the interior begins with an expansive mid-ship salon, with a U-shaped Sofa, coffee table, easy chair, and a complete audio visual center. Forward of and opening to the salon, the galley and dinette area include dining and cooking among your entertainment activities. The galley is fully equipped with refrigerator freezer, two burner cooktop, sink, and a microwave convection oven, as well as impressive cupboard and drawer space. Directly across the companionway, the large dinette table and bench seating provide ample dining space. The guest stateroom is forward, and here is a stateroom with a VIP atmosphere, roomy and well appointed. The stateroom boasts a tapered queen berth of its own, and the setting is completed by ample drawers, and hanging locker space. The room even features its own private access to the forward day head. Aft from the main salon is the very spacious master stateroom. It is appointed with a tapered queen berth, a large walk in closet, and a well lighted vanity, and private head, along with a nice shower. The 50 Hatteras Motor Yacht Sportdeck Hat-Attude provides the perfect atmosphere for all your entertaining or simply sharing good times with friends. All in all this is one motor yacht that gives you all the interior space and comfort you expect aboard a traditional motor yacht while indulging in your love of the water.

## Finish

---

- Isophthalic gelcoat, interior layer
- Isophthalic gelcoat, exterior layer White

- Blister-resistant Vinyl Ester resin in hull • Vinyl Ester gelcoat below water line • Topsides superstructure, Dupont Imron polyurethane coating
- Epoxy/copper based anti-fouling bottom paint
- Boot stripe, Dupont Imron polyurethane coating
- Decks non-skid surface, Dupont Imron polyurethane paint with polymeric beads

## Hardware and Miscellaneous

---

- Fiberglass pulpit with stainless steel anchor chute and roller
- Anchor, anchor line and deck hawse pipe
- Two stern cleats and chocks
- Four springline cleats
- Bow cleats and chocks with chafing strips
- Stainless steel rails on bow, side-deck and flying bridge
- Fog bell
- Zincs on rudders and shafts
- Dual air/electric horn
- Bow and stern staffs
- Life ring
- Life jackets (8)
- Nylon mooring lines (4)
- Portable fire extinguishers
- Trim tabs with zincs
- Bronze struts and elastomeric strut bearings
- Bronze rudders
- Five-blade propellers



- 2 " stainless steel propeller shafts

## Engine Compartment and Bilge

---

- 24 volt bilge blowers • Twin diesel, freshwater-cooled main engines with marine gears, neutral Interlocks, hour meters, alternators, fuel filters, seawater strainers and exhaust silencers Detroit 6V92 TA with new airseps • 17.5 kW freshwater-cooled diesel generator' with seawater strainer, remote start, hour meter , water lift muffler and sound enclosure
- Fixed fire extinguishing system for engine compartment with automatic and remote manual controls, plus audible and visual discharge signals
- Pressurized freshwater system with 20- gallon electric water heater
- Water fill hose for engines and generator
- Dockside water connection with pressure reducing valve • Fuel filter/water separator, generator
- Fuel filters/water separators, engines
- Fuel tank selector manifold with gauges at instrument panel
- Engine Synchronizer • Three automatic, electric bilge pumps
- Ball-valves on all underwater through hull fittings
- Sewage holding tank plumbed for dockside discharge, with level indicator light in head
- New 20 gallon hot water tank

## Electrical Equipment

---

- Two 24 volt banks of heavy duty, 12 volt marine batteries
- 240 volt automatic battery charger, 60 Hz
- Battery paralleling system with switch at control console
- Transformer connected shoreline inlets
- Air conditioning with reverse-cycle heating
- Two 240 volt, 50 amp, fused electrical inlets with cords, one each port and starboard
- 24 and 120 volt light fixtures
- 120 volt duplex outlets
- Battery control panel with fusing and isolation switches
- 24 volt DC distribution panel with magnetic circuit breakers and battery condition meter
- 24 volt DC electronics panel with magnetic circuit breakers
- 120/240 volt AC distribution panel with magnetic circuit breakers
- AC switching panel with volt meter, ammeter, and interlock selector breakers
- 6-Point systems monitor with visual and audible signals for: (a) engines -oil pressure, coolant temperature, drive oil temperature, exhaust temperature, (b) high bilge water, (c) fire warning in engine compartment, (d) engine compartment fire extinguishing system discharge, (e) AC power loss
- Ground fault protection on AC receptacles and lighting circuits
  - Navigation lights
  - Telephone/CATV inlet
  - SSB radio ground screen laminated in cabin top
- 17.5KW Onan generator with less than 1300 hours

- Cablemaster electric shore cord system on stbd side
- 24vt battery charger 60amp
- Battery paralleling system with helm switch
- Port and Starboard 50amp shore service
- Bow Thruster Battery Charger

## Flybridge

---

- Molded fiberglass
- Bench seat with vinyl-covered polyfoam cushions
- L-shaped lounge with vinyl-covered  
.Polyfoam cushions and storage below
- Stainless steel rails and stanchions
- Tinted acrylic windshield
- Control station with all necessary switches and dimmable lighted instruments
- Two recessed electronics boxes in console with plexiglass weathershields • Compass with dimmable light
- Fuel level gauge
- Dual lever clutch and throttle controls
- Hydraulic steering
  - Helmseat, adjustable
- Sliding hatch and door to aft deck
- 24 volt DC receptacle • Hydraulic 650# Marquipt Davit • F/B Hardtop with enclosure

## Aft Deck

---

- Molded fiberglass
- Wing doors
- High pressure laminate dodger boards
- Teak rails with stainless steel stanchions
- Hardtop with radar arch
- Steps to flying bridge
- Molded-in stairs to sport deck
- Fiberglass storage console
- Door to deckhouse
- Overhead light

## Deckhouse Salon

---

- Wood paneling
- Carpeting
- Vinyl headlining
- U-shaped lounge
- Coffee table
- Upholstered chair
- Lambrequins with mini blinds and upholstered valance boards
  - Tinted safety glass
- Windshield cover for privacy
- Fixed side windows
- Door to aft deck
- Entertainment center including 20" TV with omni-directional antenna, AM/FM stereo receiver, with CD player
- Telephone outlet

- Solid surface countertops
- Steps to galley/dinette
- 24 and 120 volt light fixtures
- 120 volt duplex outlets

## Galley/Dinette

---

- Wood paneling
- Hardwood Flooring
- Vinyl headlining
- Solid surface countertops with integral sink and storage cabinets made of finished wood
- Water level gauge
- 120 volt refrigerator/ freezer
- 240 volt, two-burner cooktop
- Microwave/convection oven
- Dinette, with storage drawers, converts to berth
- Storage outboard of dinette
- Washer/dryer
- 24 and 120 volt light fixtures
- Lighting soffits
- 120 volt duplex outlets
- Engine compartment access through hinged companionway

## Master Stateroom

---

- Wood paneling
- Carpeting

- Vinyl headlining
- Ventilating portlight with screen
- Large portlight in transom
- Lambrequins with pleated shades and upholstered valance boards
- Tapered queen berth with upholstered headboard, lighting soffit overhead
- Polyfoam mattress, spread, pillows, pillow shams, mattress pad and sheets
- Nightstands with storage compartments and high pressure laminate countertops
- Walk-in hanging locker with door and automatic lights
- Full-length mirror
- His & her dressers with drawers
- Private access to head
- AM/FM stereo receiver with CD player
- 24 and 120 volt light fixtures
- 120 volt duplex outlets

## Bow VIP Stateroom

---

- Wood paneling and vinyl wall covering
- Carpeting
- Padded vinyl covering on hullside
  - Vinyl headlining
  - Tapered queen berth with upholstered headboard, lighting soffit overhead, and storage drawers underneath
  - Polyfoam mattress, spread, pillows, pillow shams, mattress pad and sheets
  - Rope storage locker
- Hanging locker with door and automatic light, starboard
- Linen locker, port
- Built-in dressers, port and starboard
- Screened overhead hatch

- Nightstands, port and starboard
- 24 and 120 volt light fixtures
- 120 volt duplex outlets
- Stereo speakers with volume control
- Full-length mirror
- Private access to head

## Master and Guest Heads

---

- Vinyl headlining
- Base cabinet with storage
- Solid surface countertop with integral sink
- Vinyl wallcovering
  - Master head, tub with shower, sliding door and automatic sump pump
  - Guest head, stall shower with sliding door and automatic sump pump
- Storage cabinet with mirror doors
- Towel bar
- Vacuum-flush toilet
- Recirculating fan with air freshener
- 24 and 120 volt light fixtures
- 120 volt duplex outlet

## Electronics and Navigational Equipment

---

- Ritchie powerdamp compass
- Icom M-127 VHF radio
- Northstar 951X with
- Updated software and charts

- Autopilot/radar/plotter interfaced
- Dual air/elect horn
- Furuno Radar
- Autohelm tri data depth & speed
- Robertson AP300X autopilot
- Garmin Fishfinder
- Vetus Bow Thruster
- ACR remote spotlight
- Engine synchronizer
- Garmin color chart plotter #3210
- Hailer
- Satellite TV Antenna

## Updates and Upgrades

---

- Bow Thruster
- Davit
- 950 hours on the engines
- 1300 hours on the generator
- Marquipt 8-step starboard or port boarding ladder
- Safety 42" railing completely around
- Safety and enjoyment railing on swim step
- Teak bow counter
- A/C in helm
- New oil change pump
- New Fresh water pum
- Dual GPS and Depth finders for safety
- Ditch Bag with relevant contents
- Outside sound system
- Flat screen TV in Aft Salon and satellite TV
- New Hatteras flooring throughout
- New Galley counters, table and sink
- Master Walk-in closet \
- Full tub/shower in Master bath
- Wine cooler

## Исключения

---

При продаже яхты исключаются личные вещи владельца.

## Отказ от ответственности

---



Компания предоставляет описание судна или яхты добросовестно, но не может гарантировать точность этой информации, а также не ручается за техническое состояние. Покупатель должен проинструктировать своих агентов или оценщиков исследовать представленную информацию более подробно, по собственному желанию. Продажа судна или яхты, изменение цены или снятие с продажи будет происходить без предварительного уведомления.

# ФОТОГРАФИИ



Salon



Salon



Salon



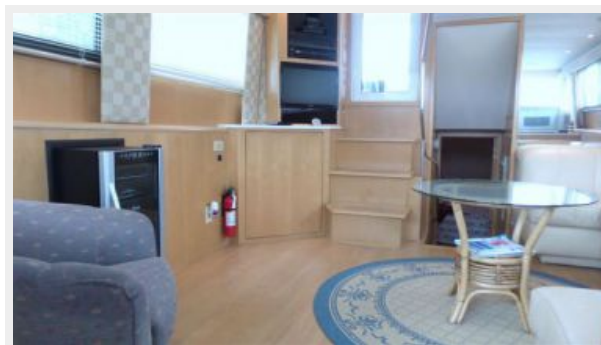
Salon



Salon



Salon



Salon



Galley



Galley



Galley



**Dinette**



**Master Stateroom**



**Master Stateroom**



**Master Stateroom**



**Master Stateroom**



**Master Stateroom Closet**



**Master Stateroom**



**Washer/Dryer**



**Vip Stateroom**



**Vip Stateroom**



**Flybridge Control Station**



**Flybridge Radar**



**Flybridge GPS**



**Flybridge Seating**



**Flybridge with Davit**



**Flybridge Seating**



**Aft Deck Wet Bar**



**Aft Deck**



**Aft Deck**



**Engine Room**



**Engine Room**



**Engine Room Generator with Sound Shield**



### Engine Room



### Out of Water when Bottom Painted October 2013



### Layout





# КОНТАКТЫ

---

Андрей Шестаков (Andrey Shestakov) – ведущий яхтенный брокер отдела продаж яхт и судов компании Shestakov Yacht Sales Inc. Официальный представитель Shestakov Yacht Sales Inc. для русскоговорящих клиентов в центральном офисе компании в Майами/Форт Лодердейл/Флорида/США.

## Контактная информация

---

Email: [andrey@shestakovyachtsales.com](mailto:andrey@shestakovyachtsales.com)

Web: [shestakovyachtsales.com](http://shestakovyachtsales.com)

## Телефоны

---

Краснодарский край: **+7(918)465-66-44**

США, Майами, Флорида: **+1(954)274-4435**

## Время работы

---

Понедельник – Суббота: **9:00 - 21:00**  
EDT

Воскресенье: **Закрето**

## Адрес

---



Harbour Towne Marina, 850 NE 3rd St,  
STE 213, Dania, FL 33004