

## MILO — ROBERTSON



**Builder:** ROBERTSON

**Year Built:** 1993

**Model:** Motorsailor

**Price:** PRICE ON APPLICATION

**Location:** Italy

**LOA:** 150' 0" (45.72m)

**Beam:** 25' 0" (7.62m)

**Max Draft:** 13' 0" (3.96m)

**Cruise Speed:** 14 Kts. (16 MPH)

Our experienced yacht broker, Andrey Shestakov, will help you choose and buy a yacht that best suits your needs **MILO — ROBERTSON** from our catalogue. Presently, at Shestakov Yacht Sales Inc., we have a wide variety of yachts available on our sale's list. We also work in close contact with all the big yacht manufacturers from all over the world.

If you would like to buy a yacht **MILO — ROBERTSON** or would like help answering any questions concerning purchasing, selling or chartering a yacht, please call **+1(954)274-4435**

# TABLE OF CONTENTS

---

TABLE OF CONTENTS	2
SPECIFICATIONS	5
Overview	5
Basic Information	5
Dimensions	5
Speed, Capacities and Weight	5
Accommodations	5
Hull and Deck Information	6
Engine Information	6
DETAILED INFORMATION	7
Overview	7
Accommodations & Layout	7
Salon & Lounge	7
Day Head	7
Galley	7
Passageway Aft From Galley	8
VIP Suite 1	8
VIP Suite 2	8
Guest Cabin 1	8
Guest Cabin 2	8
Guest Cabin 3	8
Aft Head	8
Crew Companionway & Cabin	8
Aft Crew Cabin	9
Bathroom	9
Mid Crew Cabin	9
Forward Crew Cabin	9
Master Stateroom	9

Master Aft Bathroom	9
Master Forward Bathroom	9
VIP Stateroom	9
VIP Bathroom	10
Port Guest Stateroom	10
Port Guest Stateroom Bathroom	10
Starboard Guest Stateroom	10
Starboard Guest Stateroom Bathroom	10
Deck & Hull	10
Machinery	10
Electronics & Navigation Equipment	11
Electrical	11
Fire Fighting & Safety Gear	11
Broker's Comments	11
Exclusions	12
Disclaimer	12
PHOTOS	13
Sailing Looking Aft	13
Forward Salon	13
Salon Looking Forward Toward Wheelhouse	13
Crew Lounge in Galley	13
Galley	13
Master Stateroom	13
Guest Head	14
Guest Cabin	14
Guest Head 2	14
VIP Cabin	14
VIP Head	15
VIP Cabin 2	15

---

Guest Cabin 1	15
Guest Cabin 2	15
Outside Dining	15
Wheelhouse	15
Outside Dining 3	16
Outside Dining 2	16
Aft Deck	16
Aft Deck 2	16
Foredeck 2	16
Foredeck	16
Side Deck Looking Forward into Forward Salon	17
Side Deck	17
Sailing 1	17
Sailing 2	17
Sailing from Above	17
<b>CONTACTS</b>	<b>18</b>
Contact details	18
Telephones	18
Office hours	18
Address	18

---

# SPECIFICATIONS

---

## Overview

---

SY MILO offers a rare opportunity to own a custom high performance cruising yacht. Built by master yacht builder Angus DW Robertson, MILO 175 foot mast gives her the power and stability to drive the custom 150 foot yacht with ease. In recent years she has benefitted from a complete rebuild to include new guest accommodation, new saloon and major refitting of many of the technical items. MILO's has a large owner's suite on the main deck and a second full beam VIP stateroom below as well as a 2/3 additional guest cabins configuration.

## Basic Information

---

**Category:** Motorsailor

**Sub Category:** Sloop

**Model Year:** 1993

**Year Built:** 1993

**Refit Year:** 2012

**Country:** Italy

## Dimensions

---

**LOA:** 150' 0" (45.72m)

**Beam:** 25' 0" (7.62m)

**Max Draft:** 13' 0" (3.96m)

## Speed, Capacities and Weight

---

**Cruise Speed:** 14 Kts. (16 MPH)

**Water Capacity:** 1000 Gallons

**Fuel Capacity:** 3600 Gallons

## Accommodations

---

**Total Cabins:** 5

**Sleeps:** 10

**Captain Cabin:** True

---

## Hull and Deck Information

---

**Hull Material:** Cold Molded

**Exterior Designer:** Angus DW Robertson

---

## Engine Information

---

**Engines:** 2

**Manufacturer:** MAN

**Model:** D2848

**Engine Type:** Inboard

**Fuel Type:** Diesel

# DETAILED INFORMATION

---

## Overview

---

SY MILO offers a rare opportunity to own a custom high performance cruising yacht. Built by master yacht builder Angus DW Robertson, MILO's 175 foot mast gives her the power and stability to drive the custom 150 foot yacht with ease. In recent years she has benefitted from a complete rebuild to include new guest accommodations, new salon and major refitting of many of the technical items. MILO has a large owner's suite on the main deck and a second full beam VIP stateroom below as well as a 2/3 additional guest cabins configuration. MILO's sun deck makes a wonderful lounging area under sail, power or anchor. She has excellent outdoor space for lounging, entertaining or dining. MILO's main salon is an exquisite entertaining and dining area. It is well-appointed with lots of light, with a fresh open and airy feel about it. MILO's cabins are also found to be very well-appointed with beautiful wood work throughout. Her white overheads and dark trim give a rich and classic feel. All cabins are ensuite with ample storage.

## Accommodations & Layout

---

Owners accommodation is up to 10 in 5 staterooms each with their own heads and showers. Sleeps owners and guests in 5 staterooms. The captain's quarters are separate. Each room is individually decorated to different themes and incorporate beautiful marbles in bathrooms, gold fixtures, and elegant fabrics throughout. There is a 9'x4' Jacuzzi with twin independent heaters.

## Salon & Lounge

---

Wood bulkheads Vinyl overhead Wrap around impact resistant windows Starboard side deck door Wet bar with marble counter top Stainless steel sink Refrigerator below counter Wrap around seating forward Mast wrapped in wood with built in table Two chairs Stairway aft to guest cabins, crew cabins and galley Carpeted floor

## Day Head

---

Vinyl bulkheads Mica overhead Marble shower with teak sole Marble counter top Vanity mirror

## Galley

---

Vinyl bulkheads Vinyl overhead Granite counter tops with granite backsplash Wrap around seating with table Wolf 4-burner electric stove Wolf microwave 2 x sub zero refrigerators U-Line Ice Maker 2 x 60 gallon electric hot water heaters 2500 gpd Water-Makers, Inc. water maker GE & Whirlpool combination washer & dryer Miele dishwasher U-Line wine cooler Three stainless steel sinks Lacquered cabinetry Stair way aft to engine room and electric panels

---

## Passageway Aft From Galley

---

Access to guest cabins & guest head Access to the main switchboards Access to the forward door of the engine room

---

## VIP Suite 1

---

King size bed with storage below and hanging lockers with electronic locks and remote control. Impact-resistant windows. Carpeted floor. Marble, fabric and teak finished bathroom with shower and mirrored medicine cabinet.

---

## VIP Suite 2

---

King size bed with storage below and wrap around wood cabinets. Hanging locker. Impact-resistant windows. Desk and chair. Carpeted floor. Marble & teak finished bathroom with shower.

---

## Guest Cabin 1

---

Double sized bed with storage below and hanging locker. Porthole window. Desk and chair. Carpeted floor. Marble & teak finished bathroom with shower.

---

## Guest Cabin 2

---

Queen sized bed with storage below and hanging locker. Porthole window. Carpeted floor. Marble and teak bathroom and shower.

---

## Guest Cabin 3

---

Queen size bed with storage below and hanging locker. Porthole window. Carpeted floor. Marble and teak bathroom and shower. Stairs with stainless steel handrail leading to head. All guest cabins have Satellite TV and DVD players. Broadband internet and WIFI access available from all cabins, rooms and exterior decks.

---

## Aft Head

---

Marble bulkheads Mica overhead Marble counter top Vanity mirror Marble shower with teak sole Teak and holly sole

---

## Crew Companionway & Cabin

---



---

Mica bulkheads Mirrored overhead Cedar lined lockers Washer and dryer Mirrored lockers forward Escape hatch with teak ladder Teak and holly sole

## Aft Crew Cabin

---

Mica bulkheads Mirrored overhead Double sized bed with storage below Hanging locker Teak and holly sole

## Bathroom

---

Tile bulkhead Mirrored overhead Sink, shower and toilet Mirrored medicine cabinet Tile sole

## Mid Crew Cabin

---

Mica bulkheads Mirrored overhead Double sized bed with storage below Hanging locker Desk Teak and holly sole

## Forward Crew Cabin

---

Mica bulkheads Mirrored overhead Four single upper/lower berths Teak and holly sole

## Master Stateroom

---

Fabric bulkheads with wood trim Vinyl overhead King size bed with storage below Hanging lockers with electronic locks and remote control Carpeted floor Impact resistant windows

## Master Aft Bathroom

---

Marble and fabric bulkheads Mica overhead with wood trim Marble shower Marble counter top Marble floor Mirrored medicine cabinet Large impact resistant window Toilet and sink

## Master Forward Bathroom

---

Marble and fabric bulkheads Mica overhead with wood trim Marble shower Marble counter top Marble floor Mirrored medicine cabinet Large impact resistant window

## VIP Stateroom

---

Vinyl bulkheads Vinyl overhead Wrap around wood cabinets in the bulkheads King sized bed

with storage below Desk with chair Hanging locker Impact resistant windows Carpeted floor

---

## VIP Bathroom

---

Fabric bulkheads Mica overhead Marble shower, counter top and floor Mirrored medicine cabinet

---

## Port Guest Stateroom

---

Vinyl bulkheads Vinyl overhead Double sized bed with storage below Hanging locker One port hole Carpeted floor

---

## Port Guest Stateroom Bathroom

---

Marble bulkheads Mica overhead Marble shower with teak sole Marble counter top and floor

---

## Starboard Guest Stateroom

---

Vinyl bulkheads Vinyl overhead Double sized bed with storage below Hanging locker One port hole Desk Carpeted floor

---

## Starboard Guest Stateroom Bathroom

---

Marble bulkheads Mica overhead Marble shower with teak sole Marble counter top and floor

---

## Deck & Hull

---

2 x Custom stainless steel 316 anchors housed in S/S pockets 2 x Electro-hydraulic 1500 lb. davits Huge storage including space for one tender and two-man submarine Custom UHMW chain leads for quietness Inner lazarette access hatch – gas sprung 2 x Anchor access hatches forward 350' of 3/4" anchor chain Water jet anchor wash Double articulated, stainless steel hydraulic boarding and diving ladder with remote control Twin Seaway V8000 proportional windlasses with counters Stainless steel 316 chain locks Crew's access hatch forward Hydraulic lazarette hatch, hot & cold shower facility aft, seating for 14 below the arch (air conditioned), wet bar, refrigerator, icemaker below main sheet console, pneumatic door to access interior, deck seating forward for 6, two 2" OD Grab Raid with custom designed stanchions of 316 stainless steel, Stanchions have custom angled boots throughout, entry points through grab rails, port and starboard.

---

## Machinery

---

2 John-Deere 60KW 3 phase 208V generators Fresh water cooling system 6 Blade 22" diameter prop driven by MAN D0226ME Diesel American Bow Thrusters Stainless steel, wood, fiberglass "Pedrick" designed winged spade rudder Racor In-Line with bowl filters Alpha Laval fuel polishing system Single lever hydraulic controls 42" bronze counter rotating self feathering "max" props 208 three phase voltage Fresh water cooling system Aqualift exhaust muffler Mechanical fuel pump

## Electronics & Navigation Equipment

Stainless steel deck hardware Triple station hydraulic steering gear 350 lb. stainless steel with 350 ft chain ground tackle 18 x Dacron & 3 Strand nylon mooring lines Powered stainless steel ladder off swim platform 8 x large fenders 2 x Seaway Francis Model #V-800 anchor windlass Twin aluminum with electric winch 1500 lb. each dinghy davits 2 x 6" Suunto compass 2 x Furuno Nav Pilot autopilot 2 x Robertson joy sticks 4 x Varitech chart plotters Furuno FA 150 AIS Icom IC-M504 VHF 5 x standard Horizon handheld VHF's Furuno hailer KVH Sat phone 2 x Furuno RD-30 depth finders 2 x Furuno wind speed 9 x Samsung LED TV's 9 x Valor AM/FM CD/DVD players

## Electrical

3 x 25 amp "interactor" 24 volt charger Newmar DC converter Over 30 x 12 volt 8D gel cells Shore transformers 2 x 8D's battery installation for house service 2 x 8D's battery installation electronics + 2 x 12 volt for emergency backup 7 approved battery switches Fiberglass & plastic drip pans Sound & secure cable & terminal connects 24 + 12 volt DC & 110 volt AC lights Thermoplastic wiring 2 x 100 amp on power reels + 2 receptacles

## Fire Fighting & Safety Gear

6 x 15 lb. dry powder hand held fire extinguishers Fireboy Halon 1301 built in system Aux fire hydrants aft to port & starboard Bilge pumps 20 x PFD's type 1 life jackets 20 x safety harnesses 4 x life rings 2 x Survitec survival products 25 MAN SOLAS 6 x red flares, 3 orange flares – 6 cartridges + 2 x guns 2 x EPIRB First aid kit MOM 8 man overboard module Smoke detectors

## Broker's Comments

MILO offers the best combination in a motor sailor. She sails with ease and can motor through the light winds or offer the combination of both. Capable of sailing to any ocean, MILO is the true blue water yacht you are looking for. MILO's present owner has done an excellent job refitting her, make her a well appointed, well equipped and modern yacht ready to sail to your dream destinations. Her accommodations within and outdoor space makes for the perfect platform for charter or private uses.

---

## Exclusions

---

Owner's personal belongings.

---

## Disclaimer

---

The Company offers the details of this vessel or yacht in good faith but cannot guarantee or warrant the accuracy of this information nor warrant the condition of the vessel. A buyer should instruct his representatives, agents, or his surveyors, to investigate such details as the buyer desires validated. This vessel or yacht is offered subject to prior sale, price change, or withdrawal without notice.

# PHOTOS

**Sailing Looking Aft**



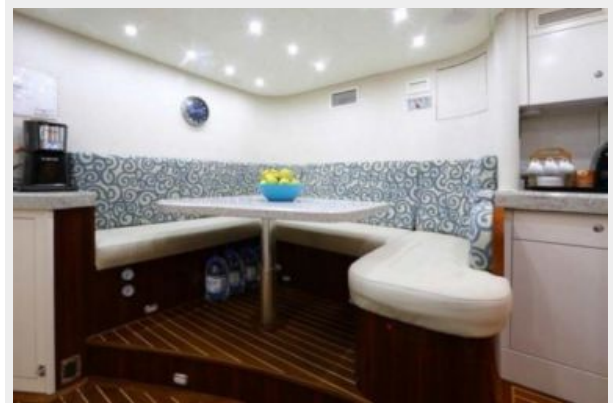
**Forward Salon**



**Salon Looking Forward Toward Wheelhouse**



**Crew Lounge in Galley**



**Galley**



**Master Stateroom**



**Guest Cabin**



**Guest Head**



**Guest Head 2**



**VIP Cabin**





**VIP Cabin 2**



**VIP Head**



**Guest Cabin 1**



**Guest Cabin 2**



**Wheelhouse**



**Outside Dining**



**Outside Dining 2**



**Outside Dining 3**



**Aft Deck**



**Aft Deck 2**



**Foredeck**



**Foredeck 2**





**Side Deck**



**Side Deck Looking Forward into Forward Salon**



**Sailing 2**



**Sailing 1**



**Sailing from Above**



# CONTACTS

---

Andrey Shestakov, leading yacht broker of the sales department of Shestakov Yacht Sales Inc. Shestakov Yacht Sales Inc., the official representative of the Miami/Fort Lauderdale FL headquarters.

## Contact details

---

Email: [andrey@shestakovyachtsales.com](mailto:andrey@shestakovyachtsales.com)

Web: [shestakovyachtsales.com/en/](http://shestakovyachtsales.com/en/)

## Telephones

---

USA: +1(954)274-4435

## Office hours

---

Monday – Saturday: **9:00 - 21:00** EDT

Sunday: **closed**

## Address

---



Harbour Towne Marina, 850 NE 3rd St,  
STE 213, Dania, FL 33004