

# 42FT 2001 SILVERTON 42C CONVERTIBLE — SILVERTON



**Builder:** SILVERTON

**LOA:** 42' 0" (12.80m)

**Year Built:** 2001

**Model:** Cruiser

**Price:** PRICE ON APPLICATION

**Location:** United States

Our experienced yacht broker, Andrey Shestakov, will help you choose and buy a yacht that best suits your needs 42ft 2001 Silverton 42C Convertible — SILVERTON from our catalogue. Presently, at Shestakov Yacht Sales Inc., we have a wide variety of yachts available on our sale's list. We also work in close contact with all the big yacht manufacturers from all over the world.

If you would like to buy a yacht 42ft 2001 Silverton 42C Convertible — SILVERTON or would like help answering any questions concerning purchasing, selling or chartering a yacht, please call +1(954)274-4435

# TABLE OF CONTENTS

TABLE OF CONTENTS	2
SPECIFICATIONS	5
Basic Information	5
Dimensions	5
Speed, Capacities and Weight	5
Accommodations	5
Hull and Deck Information	5
Engine Information	5
DETAILED INFORMATION	6
Accommodations	6
Salon	6
Galley	7
Master Stateroom	7
Guest Stateroom	7
Deck	8
Electrical	8
Engine/Mechanical	9
Upgrades/Updates	9
Exclusions	10
Disclaimer	10
PHOTOS	11
Main Salon	11
Main Salon	11
Entertainment Center	11
Galley	11
Head	12
Master Cabin	12
Guest Cabin	12

Guest Cabin	12
Cockpit & BBQ	13
Transom Door	13
Wet Bar	13
Wet Bar	13
Stairway to Flybridge	14
Faucets	14
Flybridge Helm	14
Flybridge	14
Engine Room	15
Gauges	15
Engine Room	15
Engine Room	15
Engine Room	15
Engine Room	15
Engine Room	16
Generator	16
Port Bow	16
Starboard Profile	16
Port Profile	16
Stern	16
Service, Parts, & Operators Manuals	17
Profile	17
Profile	17
<b>CONTACTS</b>	<b>18</b>
Contact details	18
Telephones	18
Office hours	18
Address	18



---

# SPECIFICATIONS

---

## Basic Information

---

**Category:** Cruiser

**Model Year:** 2001

**Year Built:** 2001

**Country:** United States

## Dimensions

---

**LOA:** 42' 0" (12.80m)

## Speed, Capacities and Weight

---

**Fuel Capacity:** 524 Gallons

## Accommodations

---

**Total Berths:** 2

**Total Heads:** 2

## Hull and Deck Information

---

**Hull Material:** Fiberglass

## Engine Information

---

**Engines:** 2

**Manufacturer:** Caterpillar

**Model:** 3126

**Engine Type:** Inboard

**Fuel Type:** Diesel

---

# DETAILED INFORMATION

---

## Accommodations

---

Private master with queen island berth, cabinets, hanging lockers, split head with separate shower and head with vacuum-flush and sink and vanity.

Expansive salon with raised dinette, salon reclining lounges central vacuum, entertainment system is a JVC DVD/stereo/VCR, subwoofer Bose surround sound.

Double berth, hanging lockers full length (2 for master ) and one for guest bedroom.

- Power side windows in salon
- Padded stain master carpet
- TV in salon, VCR, 6-disc CD Table,
- TV in master bedroom
- TV in guest bedroom
  
- New Salon air conditioner ( August 2011)
  
- Kicker 650 Marine amp
  
- Pioneer CD, Sirius XM ready
  
- (2) 10" Sub woofers
- (4) Upper helm speakers
- (2) Lower aft deck outside speakers
  
- Pioneer controls

## Salon

---

- Soft leather recliner sofa that pulls out to a sleeping bed
- Total sleeping 6
- Side powered electrical windows
- Window blinds
- Island table and booth that seats 6 with underneath storage, in table with liquor storage bar
- Coffee table
- Curtain closure
- TV/VHS/5-disc CD turn table
- Bose surround sound system with receiver/remove control
- Large shelving display
- Sliding glass doors with screen
- Large storage cabinet

- Upper lighting and dimming & lower lighting and dimming
- Panoramic view
- Cover for large front windows
- Central vacuum system

---

## Galley

---

- 2 Nova cool refrigerators
- Freezers
- Corian counter tops
- Stainless steel sink with pull out nozzle spray
- Extensive overhead and under cabinets
- Space saver coffee maker
- Sharp convection oven/microwave
- Flat surface stove top
- First aid kit
- Wooden floor
- Stair lighting

---

## Master Stateroom

---

- Forward queen berth
- Stainmaster padded carpet
- Mirrors
- Overhead reading lights
- Skylight with hatch
- TV with sound system
- Designer mattress covers
- Inner spring mattress
- Air conditioning
- Large clothing drawer storage
- Shelving on both sides of bed
- Mirror with storage
- (1) Cedar-lined full-size hanging closet
- (1) Full-size cabinet locker with shelving
- Private access to full-size seating shower and private access to head with port hole
- Vacuum-flush head
- 

---

## Guest Stateroom

---

- Inner spring mattress
- Carpeted, mid-ship
- TV & VCR
- Port hole window
- Full cedar-lined closet
- Overhead storage cabinets
- Shelving
- Under mattress storage and drawer
- Private access to full-size shower with seating bench and port hole
- Custom bedding mattress
- Vacuum-flush head

---

## Deck

---

- Windless hard top with full enclosure all zipper
- Bridge seating lounges
- (2) Custom helm chairs with 5-inch extensions & foot rest
- Sun roof hatch with vent opening
- Molded steps with teak leading to fly bridge
- Cock pit icemaker/wet bar
- Delta anchor
- Lewmar electric windlass
- Holders for fenders
- Bow pulpit
- Windshield shade cover
- Fish holding tank
- Live well with auto filling and auto draining
- Hot/cold wash down
- Sea water wash down
- (2) Outdoor wicker/swivel rockers and table with cushions/pillows
- Custom aft deck canopy cover
- Bridge and aft deck blue accent LED blue lighting
- Covered ladder
- Extended ladder with easy grip access to deck

---

## Electrical

---

- 100 volt AC
- 12 volt 110
- 8 or 10 KW Kohler generator powered by Yanmar diesel with hush kit silencer enclosure
- 50 amp Dock side electrical cable
- 12 volt DC electrical system chargers



- Battery parallel switch
- (2) battery disconnect switches
- Stainless steel gas BBQ grill
- Single point 250 volt/50 amp connection

---

## Engine/Mechanical

---

- Halon fire control system
- Raw water sea strainers
- Walker air seps air filtration system
- Oil pressure alarm
- Emergency engine stop
- Water temperature alarm
- (2) Zone air conditioning
- Batteries (4) 8D plus (2) 4D starting batteries
- Battery charger
- Battery parallel switch
- Bilge blowers
- Bilge pumps
- Dripless shaft logs
- Engine room lights
- Engine synchronizer Glendinning
- Automatic oil transfer system
  
- Auto engine oil and generator oil changer
  
- Racor fuel filters
- Fresh water cooled engines
- Hydraulic steering with power assist
- Fire suppression system
- Fuel cross-over valves
- Fuel shut off valves
- Spot light
- Hydraulic trim tabs
- Cable TV connection
- Boat safe electrical engine room heaters (2)
- 200 ft Chain rode

---

## Upgrades/Updates

---

- New Salon air conditioner (August 2011)
- Bottom paint (2012)
- Transmission service (2012)

- New ice maker (2011)
- New batteries (2010)
- New transmission shift cables (2012)
- Wheels computer tuned and balance (2012)
- New teak flooring on aft deck, swim platform, stairs to flybridge, flybridge carpeted

## Exclusions

---

Owner's personal belongings.

## Disclaimer

---

The Company offers the details of this vessel or yacht in good faith but cannot guarantee or warrant the accuracy of this information nor warrant the condition of the vessel. A buyer should instruct his representatives, agents, or his surveyors, to investigate such details as the buyer desires validated. This vessel or yacht is offered subject to prior sale, price change, or withdrawal without notice.

# PHOTOS

**Main Salon**



**Main Salon**



**Entertainment Center**



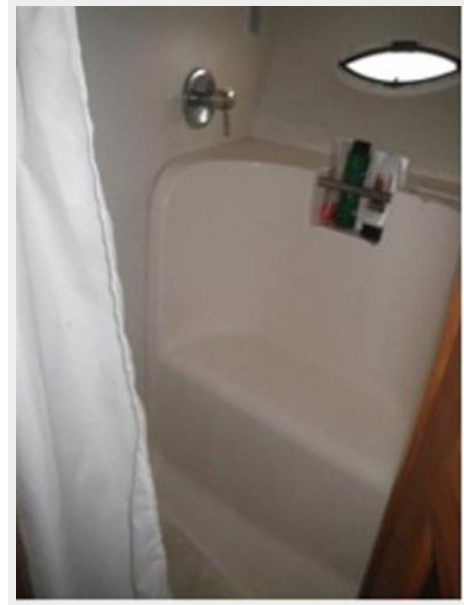
**Galley**



**Master Cabin**



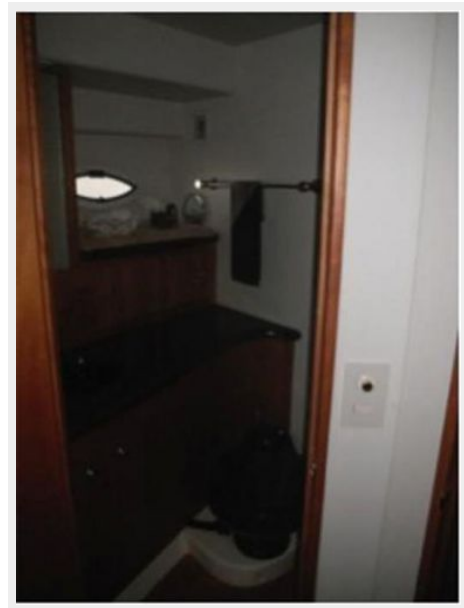
**Head**



**Guest Cabin**



**Guest Cabin**



**Cockpit & BBQ**



**Transom Door**



**Wet Bar**

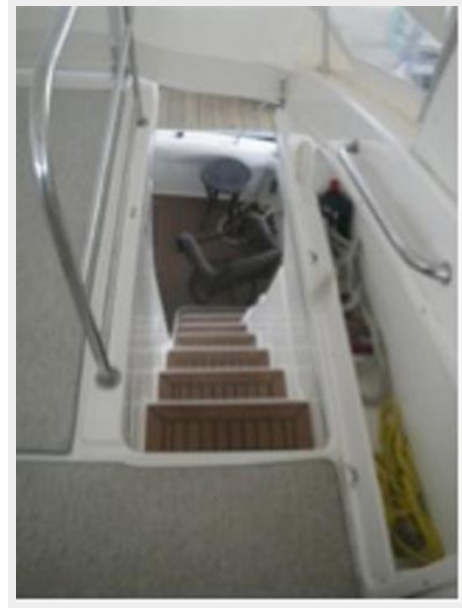


**Wet Bar**



### Stairway to Flybridge

### Faucets



### Flybridge Helm



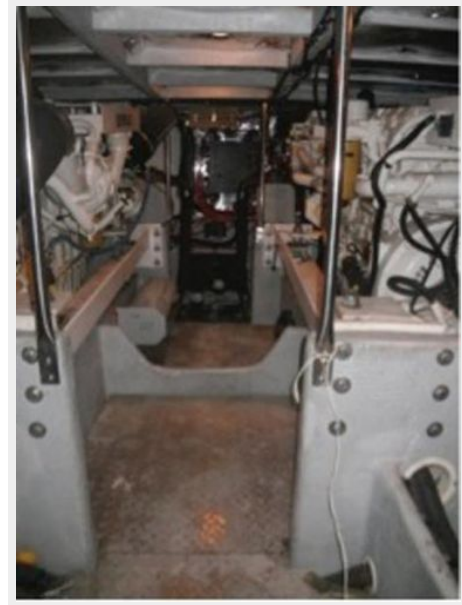
### Flybridge



Gauges



Engine Room



Engine Room



Engine Room



Engine Room



Engine Room



**Engine Room**



**Generator**



**Port Bow**



**Starboard Profile**



**Port Profile**



**Stern**





### Service, Parts, & Operators Manuals



### Profile



### Profile



# CONTACTS

---

Andrey Shestakov, leading yacht broker of the sales department of Shestakov Yacht Sales Inc. Shestakov Yacht Sales Inc., the official representative of the Miami/Fort Lauderdale FL headquarters.

## Contact details

---

Email: [andrey@shestakovyachtsales.com](mailto:andrey@shestakovyachtsales.com)

Web: [shestakovyachtsales.com/en/](http://shestakovyachtsales.com/en/)

## Telephones

---

USA: +1(954)274-4435

## Office hours

---

Monday – Saturday: **9:00 - 21:00** EDT

Sunday: **closed**

## Address

---



Harbour Towne Marina, 850 NE 3rd St,  
STE 213, Dania, FL 33004