

IN FULL BLOOM — HEISLEY



Судостроитель: HEISLEY

Год постройки: 1999

Модель: Моторная яхта

Цена: ЦЕНА ЯХТЫ ПО ЗАПРОСУ

Местонахождение: United States

Длина общая: 95' 0" (28.96m)

Ширина: 22' 0" (6.71m)

Мин. осадка: 5' 0" (1.52m)

Купить **In Full Bloom — HEISLEY** а также выбрать подходящую вам яхту из нашего каталога яхт вам поможет опытный яхтенный брокер Андрей Шестаков. На сегодняшний день компания **Shestakov Yacht Sales Inc.** имеет большое количество яхт в собственном списке продаж, а также тесно сотрудничает со всеми крупными яхтенными производителями по всему миру.

Для того чтобы купить яхту **In Full Bloom — HEISLEY** а также проконсультироваться по любому вопросу связанному с покупкой, продажей, чартером яхт позвоните по телефону **+7(918)465-66-44**.

ОГЛАВЛЕНИЕ

ОГЛАВЛЕНИЕ	2
ХАРАКТЕРИСТИКИ	5
Обзор	5
Основная информация	5
Размеры	5
Скорость, вместимость и масса	5
Размещение	6
Корпус и палуба	6
Информация о двигателе	6
ПОДРОБНОЕ ОПИСАНИЕ	7
Accommodations and Layout	7
Galley	8
Skylounge & Flybridge	9
Upper Aft Deck with Extended Hardtop	10
Deck Equipment	10
Navigation & Electronics	10
Mechanical & Engines	11
Electrical	12
Captains Notes	12
Исключения	12
Отказ от ответственности	12
ФОТОГРАФИИ	13
Bow View	13
Rendova and Davit	13
Custom Hardtop Extention	13
Cockpit and Salon Entry	13
Cockpit Dining Table	13
Grand Salon	13

Port Salon	14
Starboard Salon	14
Dining	14
view 2	14
Double sided Galley	14
view 1	14
view 2	15
VIP Upper Stateroom	15
VIP head	15
view 2	15
view 3	15
Staircase to Master and Guest staterooms	15
Foyer	16
Master Suite	16
view 2	16
Private Master study	16
Shared steam shower	17
His	17
Hers	17
Guest Suite	17
To Helm Station and Skylounge	18
Guest head	18
Helm Station	18
Helm Controls and Electronics	18
Seating for Captain and Crew	19
Crew Berth	19
Skylounge Seating	19
Wine Chiller, Refrig, Wetbar and TV	19
Forward Crew quarters	20

Galley and Dinette	20
Dinett	20
Captains private cabin w/head	20
Captains head	20
Crew bunks and private head	20
Aft Cockpit	21
Sun Pad Lounge	21
Dual Wing Docking Stations	21
Enclosed Rod Storage	21
15 Seconds from Flybridge to Engine Room	22
Engine Room Access/Grill/Fire Station	22
Easy access for maintenance	22
Port	22
Starboard	22
Starboard Main Engine	22
Two 3hp Bilge/Fire Pumps	23
Fuel transfer manifold	23
Alfa laVal Fuel Polishing centrifuge	23
Aqua Air Chillers w/Frequency Drives	23
Dometic 600 lb /day Chip Ice Maker	23
40 kw Northern Lights Generator	23
Stern View	24
20 kw Northern Lights Generator and Spare Pumps	24
КОНТАКТЫ	25
Контактная информация	25
Телефоны	25
Время работы	25
Адрес	25

ХАРАКТЕРИСТИКИ

Обзор

2 BOAT OWNER !! PRICE REDUCED FOR IMMEDIATE SALE!!! "In Full Bloom" will take you to enchanting destinations while pampering you with the most luxurious accommodations and amenities. Capable of long term adventuring and self-sufficiency whether cruising the rugged coast of Maine or enjoying Caribbean beaches, you'll relax, secure in the knowledge you are travelling in a yacht built to the highest standards of marine construction and nautical technology.

This Custom Tri Deck Motoryacht offers a variety of entertainment options including 3 Deluxe Staterooms, Upper Aft Deck, Grand Salon and Dining room, Gourmet galley, Skylounge and full Crew quarters.

An Engineer's dream with easy access to all systems for servicing.

Основная информация

Тип судна: Моторная яхта

Подкатегория: Tri-Deck

Модельный год: 1999

Год постройки: 1999

Страна: United States

Открытая палуба мостика: Да

Кубрик: Да

Размеры

Длина общая: 95' 0" (28.96m)

Ширина: 22' 0" (6.71m)

Мин. осадка: 5' 0" (1.52m)

Трапы: 35' 0" (10.67m)

Скорость, вместимость и масса

Вместимость воды: 500 Gallons

Вместимость сточного бака: 300 Gallons

Объем топливного бака: 3400 Gallons

Размещение

Всего кают: 3

Корпус и палуба

Материал корпуса: Fiberglass

Комплектация корпуса: Modified V-Hull

Отделка корпуса: Aluminum

Информация о двигателе

Двигатели: 2

Производитель: MTU

Модель: 183TE92

Тип двигателя: Inboard

Тип топлива: Diesel

ПОДРОБНОЕ ОПИСАНИЕ

Accommodations and Layout

Double sliding glass door entry from the spacious upper aft deck leads into the luxurious salon and dining room. A well equipped double sided gourmet galley is forward of the VIP stateroom with ensuite head. The spiral staircase to the lower foyer leads to a full beam deluxe Master Stateroom Island Queen berth w/ensuite his and her bathrooms and shared steam shower and private study. The Guest Stateroom King berth can be converted to 2 singles and includes an ensuite head w/tub. Captains double stateroom and full crew quarters lounge, galley and V berth is accessed from forward staircase on main level. Spiral staircase leads up to Full Helm Station and Skylounge.

- **MAIN SALON and DINING**

- Panoramic view through large tinted windows
- Rich tiger maple interior cabinetry
- Recessed overhead lighting
- Generous wrap around Upholstered Sofa
- Oval glass top maple coffee table
- 2 Upholstered Barrel chairs
- Entertainment center with 42" pop up plasma TV
- Full entertainment package w/remote
- High gloss Teak Dining table
- 6 Upholstered High back chairs
- Lighted cabinets with frosted glass inserts comes complete with Crystal
- Custom buffet cabinet complete with Flatware, China and Linens
- Carpeting
- Window shades
- 2 side doors access to side walk arounds

- **UPPER VIP STATEROOM**

- Large picture window view w/ shades
- Queen Size Island berth
- Twin large Upholstered Ottomans on each side
- Tiger maple Night Stands, Bureaus, Cedar lined closets
- Black marble flooring
- Dual access ensuite head with mirrored wall treatments
- Granite counters with dual sinks
- Separate shower stall
- Sharp LCD 20" TV ,
- Teac Receiver CD/DVD

- **MASTER STATEROOM**

- Queen size Island berth in full beam spacious suite
- Black Marble in His & Hers Separate Heads

- Shared Steam Shower
- Chrome and Brass fittings
- His & Hers separate cedar lined closets, bureau and night stands
- Recessed overhead lighting
- Large Opening SS Ports with SS Securing Covers
- Sharp LCD 20" TV
- Teac Receiver CD/DVD
- **OFFICE/STUDY**
- Maple desk and chair w/Vanity mirror
- Safe
- Pull-out Sleeper Sofa
- Cedar lined closet
- Sharp LCD 20' TV
- Washer/Dryer
- **LOWER GUEST STATEROOM**
- Full beam stateroom with Side by Side single berths that convert to King
- Custom marble bathroom with tub
- Night Stand, Bureau and Cedar lined closet
- Sharp LCD 20" TV
- **CREWS QUARTERS**
- Separate Captains Stateroom w/double berth and private head
- Under berth drawers, side table, cedar line closet and overhead storage
- 24" LCD TV, GPS & VHF
- Crew V berth quarters with upper and lower berths each side
- under berth drawers and storage
- Crew full head and shower
- Crew Bosch Washer and Dryer
- Crew Galley, Office and Entertainment Area
- Curved upholstered bench seating with Corian table, seats 4
- 24" LCD TV
- Sink and counter space w/ cabinet storage
- Refrigerator
- Gaggenau stove top

Galley

A true chefs delight! Fully equipped double sided galley.

- Sicilian Granite Countertops
- High varnish Oak Parquet flooring
- Gaggenau 2 burner Electric Stovetop with Deep fat fryer
- Additional Gaggenau 2 burner Electric Stovetop

- Viking Dual Convection Ovens
- Viking Professional side by side Refrigerator/Freezer w/Icemaker
- Sharp Carousel Convection Microwave
- Gaggenau BBQ Grill on aft deck
- Bosch Dishwasher
- Kitchen Aid Trash Compactor
- Double SS Sink w/ single lever faucet
- Garbage disposal
- Built in Spice Rack
- Modern Gun Metal finish Cabinets w/ frosted glass panels
- Bread-box roller cabinet
- Generous provisioning room and pantry
- Maple and frosted glass pocket door to passageway
- Maple and frosted glass bi-fold pass thru to dining area
- Overhead lighting
- Under cabinet lighting
- Fire Blanket
- Stereo speakers in galley
- Port midship walkway side entrance

Skylounge & Flybridge

- Panoramic 360 view
- Teak inlaid coffee and dining table
- (2) Double Upholstered Sofa seating
- (2) Upholstered Arm chairs
- (2) Side tables
- Wet bar with sink
- Black marble countertops
- Tiger maple cabinet doors
- Entertainment center w/ Drop down TV, DVD, Stereo and CD
- 20 Bottle wine cooler
- Wet bar with sink
- Refrigerator w/Icemaker
- Sunshades
- Carpeted floor
- Sliding glass door leading to upper deck to flybridge
- **FLYBRIDGE and PILOTHOUSE**
- Complete helm station with all controls and full instrumentation
- Black Leather Captains Chair
- Built in Murphy bed on back side of couch
- Comfortable Black Leather couch

Upper Aft Deck with Extended Hardtop

- Custom Teak High gloss inlaid table
- Seats 9 with wrap around cushioned benches
- (3) Teak folding chairs w/cushions
- Teak decks
- Hardtop with custom extension also includes overhead rod storage
- Ample life preserver storage underseating
- Sharp 24" LCD TV /DVD
- Overhead and Accent lighting
- Twin Wing Helm Control Stations
- Teak ladder up to Skylounge level
- Immediate access hatch to engine room
- Twin steps to Aft deck and swim platform level

Deck Equipment

- (2) Muir Hydraulic windlass
- 2 Anchors w /anchor chain washdown system
- 1 has 450 ft of chain
- 1 has 150 ft of chain and 1000 ft of 1 in of nylon line
- Bimini top for flybridge and tender
- Deck wash down system (fresh & salt)
- Nautical Structures 1700 lb motorized Davit
- 15' Rendova RIB w/60 hp outboard
- 8 Man Liferaft
- 4 Extreme Beam Halogen underwater lights
- Teak Swim platform w/dive ladder
- hot & cold shower
- Marquipt boarding ladder
- Built in Gaggenau Grill in cockpit port side
- Chipped Ice Cooler in cockpit starboard side
- Brownie Dive Compressor with a 4 bottle manifold located in lazarette

Navigation & Electronics

- ComNav 2001 Autopilot
- 2 Northstar 952xd GPS 1 in pilothouse and 1 in Captains stateroom
- Navigational computer with Nobeltec Visual Software
- Raymarine Network w/2 E120s in pilothouse and E80 on the fly bridge
- Raymarine 20 mile radar 4ft open array
- Furuno 72 mile radar

- FLIR , Forward Looking Imaging Rader w/pan & tilt, for night vision
- Wesmar scanning retractable sonar
- 2 Compasses 7 1/2" & 4"
- Icom SSB in pilothouse
- AIS
- (4) Icom VHF's, 1 on flybridge 2 in pilothouse 1 in Captains stateroom
- Comnav antennas for radios in pilothouse SSB, VHF's
- Seatel Satellite phone
- KVH M9 w/8 Direct TV Satellite Receivers
- Full instrumentation
- Clarion Stereo Sat/CD Radio

Mechanical & Engines

- Engineers dream with easy access to all components
- Twin MTU 183TE92 1000hp w/4100 hrs
- ZF 2.5 to 1 transmissions
- Airsep filtration on main engines
- Seapar primary and secondary filtration
- Glendenning electronic engine controls in pilothouse, flybridge and 2 docking stations located on port and starboard aft deck wing stations, Rudder angle indicators, bow thruster and autopilot capabilities from all
- 3400 gals total, 5 main fuel tanks and 2 day tanks fuel can be transferred from main tank to day tank
- Alfa Laval Fuel Polishing System
- Ac and Dc fuel transfer pumps capable of 12 gpm
- Oil transfer system for all engines, 48 gallon new and used tanks in sole under deck plates
- AquaAir 120,000 BTU Air Conditioning, 3 chillers and 14 air handlers supplies ample cooling and heating as needed
- 600 lb per day Dometic Chipped Ice Maker
- Westmar 50 hp Bow Thruster
- 2 Roll fin Stabilizers
- 2 Muir Windlasses and Capstans on the bow
- 2 winches in the cockpit
- (2) 20 gal 1500 watt heaters w/hot circulation for constant hot water
- 500 gallon fresh water
- 1500 gal per day FCI Reverse Osmosis Water Maker
- (7) 24 volt 2500 GPH Bilge Pumps
- (2) 3HP 220volt Fire/Bilge Manifold system
- 100 ft 1 1/2" fire hose housed in a fire locker in the cockpit
- Automated Halon extinguishing system along with a Delta T automated force draft blower system
- 220 volt Central Vacuum system with location throughout the vessel

Electrical

- 220V/110V/24V/12V systems
- Main A/C D/C panel located in engine room
- 5 Battery Chargers
- 8 AGM Batteries
- Glendenning Cablemasters w/(2)100 amp cords & (1)30 amp tender cord
- 2 step up Transformers
- 2 Northern Lights 40 kw and 20 kw Generators
- Seapar filtration

Captains Notes

- Since coming on board the In Full Bloom in 2007 it was apparent that this yacht was something special, it seemed everything was thought of and thought out. She handles like a Sportfish and cruises like Yacht.
- Design 5 ft draft makes cruising the Caribbean easier and outer island more accessible
- Easy handling and docking with 4 complete stations
- Complete walk around
- Ladder from inside the engine room to the fly bridge (10 seconds)
- Large engine room for ease of maintenance
- Shower separates engine room bulkhead from Master Stateroom for quiet cruising
- Exceptionally large Portals allow ample light and escape if necessary
- Fuel Tank layout in the sole 5 fuel tanks that you can transfer from one tank to the other tank for Ballast or polish with an Alfa Laval polishing centrifuge
- 100 ft fire hose w/water in 20 seconds

Исключения

При продаже яхты исключаются личные вещи владельца.

Отказ от ответственности

Компания предоставляет описание судна или яхты добросовестно, но не может гарантировать точность этой информации, а также не ручается за техническое состояние. Покупатель должен проинструктировать своих агентов или оценщиков исследовать представленную информацию более подробно, по собственному желанию. Продажа судна или яхты, изменение цены или снятие с продажи будет происходить без предварительного уведомления.

ФОТОГРАФИИ

Bow View



Rendova and Davit



Custom Hardtop Extention



Cockpit and Salon Entry



Cockpit Dining Table



Grand Salon



Port Salon



Starboard Salon



Dining



view 2



Double sided Galley



view 1



view 2



VIP Upper Stateroom



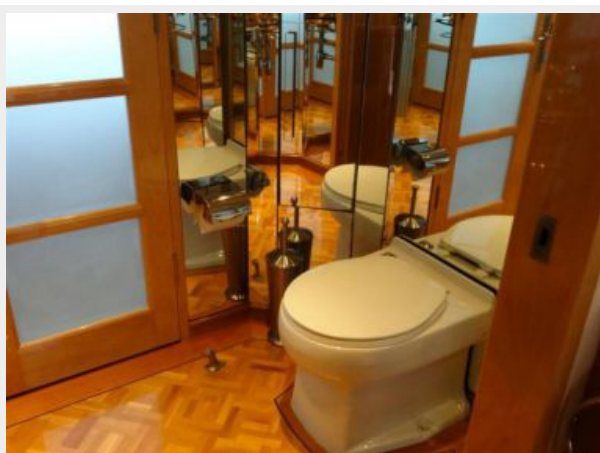
VIP head



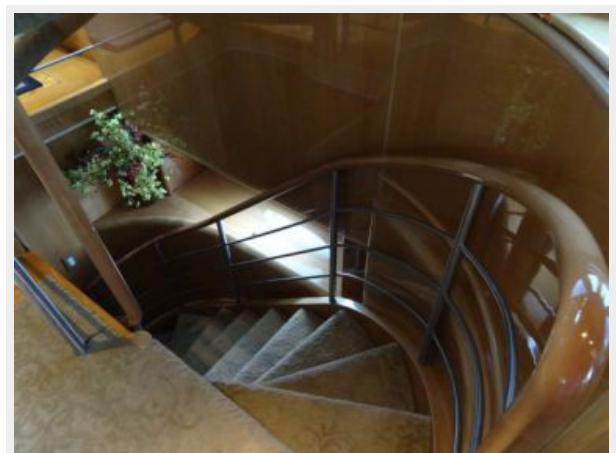
view 2



view 3



Staircase to Master and Guest staterooms



Foyer



Master Suite



view 2



Private Master study



His



Shared steam shower



Hers

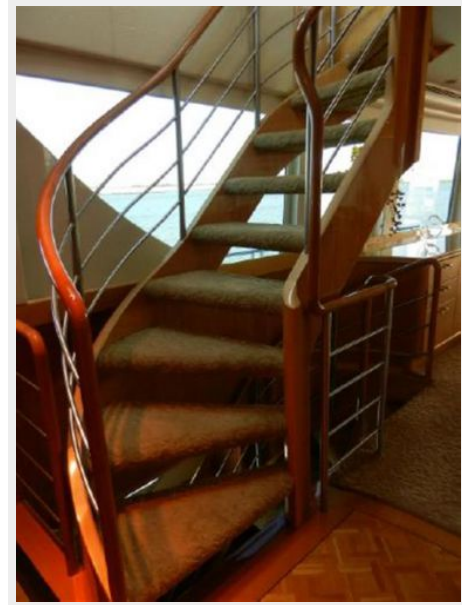


Guest Suite



To Helm Station and Skylounge

Guest head



Helm Station



Helm Controls and Electronics





Seating for Captain and Crew



Crew Berth



Skylounge Seating



Wine Chiller, Refrig, Wetbar and TV



Forward Crew quarters



Galley and Dinette



Dinett



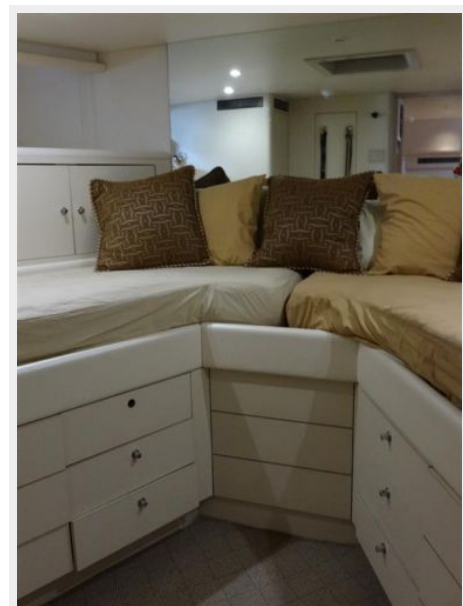
Captains private cabin w/head



Captains head



Crew bunks and private head



Sun Pad Lounge



Aft Cockpit



Dual Wing Docking Stations



Enclosed Rod Storage



15 Seconds from Flybridge to Engine Room



Engine Room Access/Grill/Fire Station



Easy access for maintenance



Port



Starboard



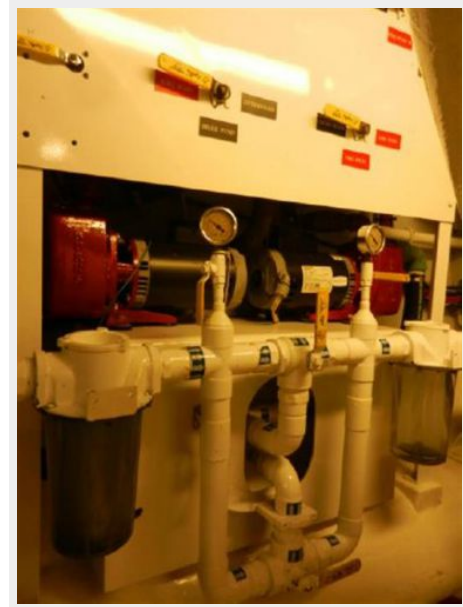
Starboard Main Engine



Fuel transfer manifold



Two 3hp Bilge/Fire Pumps



Alfa laVal Fuel Polishing centrifuge



Aqua Air Chillers w/Frequency Drives



Dometic 600 lb /day Chip Ice Maker



40 kw Northern Lights Generator



Stern View

20 kw Northern Lights Generator and Spare Pumps



КОНТАКТЫ

Андрей Шестаков (Andrey Shestakov) – ведущий яхтенный брокер отдела продаж яхт и судов компании Shestakov Yacht Sales Inc. Официальный представитель Shestakov Yacht Sales Inc. для русскоговорящих клиентов в центральном офисе компании в Майами/Форт Лодердейл/Флорида/США.

Контактная информация

Email: andrey@shestakovyachtsales.com

Web: shestakovyachtsales.com

Телефоны

Краснодарский край: **+7(918)465-66-44**

США, Майами, Флорида: **+1(954)274-4435**

Время работы

Понедельник – Суббота: **9:00 - 21:00**
EDT

Воскресенье: **Закрито**

Адрес



Harbour Towne Marina, 850 NE 3rd St,
STE 213, Dania, FL 33004