

NEW TO THE MARKET — EGG HARBOR



Builder: EGG HARBOR

Year Built: 2003

Model: Motor Yacht

Price: PRICE ON APPLICATION

Location: United States

LOA: 42' 0" (12.80m)

Beam: 15' 0" (4.57m)

Max Draft: 3' 6" (1.07m)

Our experienced yacht broker, Andrey Shestakov, will help you choose and buy a yacht that best suits your needs **New to the Market — EGG HARBOR** from our catalogue. Presently, at Shestakov Yacht Sales Inc., we have a wide variety of yachts available on our sale's list. We also work in close contact with all the big yacht manufacturers from all over the world.

If you would like to buy a yacht **New to the Market — EGG HARBOR** or would like help answering any questions concerning purchasing, selling or chartering a yacht, please call **+1(954)274-4435**

TABLE OF CONTENTS

TABLE OF CONTENTS	2
SPECIFICATIONS	4
Basic Information	4
Dimensions	4
Speed, Capacities and Weight	4
Accommodations	4
Hull and Deck Information	4
Engine Information	5
DETAILED INFORMATION	6
Manufacturer Provided Description	6
Flybridge	6
Additional Description	6
Additional Description	6
Additional Description	7
Additional Description	8
Additional Description	8
Additional Description	9
Additional Description	9
Additional Description	10
Additional Description	10
Utilities	10
Exclusions	10
Disclaimer	11
PHOTOS	12
Manufacturer Provided Image	12
Manufacturer Provided Image	12
Manufacturer Provided Image	12
Manufacturer Provided Image	12

Manufacturer Provided Image	12
Manufacturer Provided Image	12
CONTACTS	26
Contact details	26
Telephones	26
Office hours	26
Address	26

SPECIFICATIONS

Basic Information

Category: Motor Yacht

Sub Category: Convertible

Model Year: 2003

Year Built: 2003

Country: United States

Dimensions

LOA: 42' 0" (12.80m)

Beam: 15' 0" (4.57m)

Max Draft: 3' 6" (1.07m)

Clearance: 13' 0" (3.96m)

MFG Length: 45' 8" (13.92m)

Speed, Capacities and Weight

Displacement: 38500 Pounds

Water Capacity: 115 Gallons

Holding Tank: 40 Gallons

Fuel Capacity: 650 Gallons

Accommodations

Total Berths: 4

Hull and Deck Information

Hull Material: Fiberglass

Engine Information

Engines: 2

Manufacturer: Caterpillar

Model: 3196

Engine Type: Inboard

Fuel Type: Diesel

DETAILED INFORMATION

Manufacturer Provided Description

Clean, fast, maneuverable and classic, the 43 SportYacht displays all the traditional Egg Harbor strengths and beauty. You'll appreciate every touch, from its wide-open cockpit and wood-rich luxury interior to its sea-smoothing hull with raised sheer line and soft, dry ride. The broad 15-ft. beam provides ample interior room for two luxury staterooms, a full head with separate stand-up shower, and a large salon featuring wood-rich luxury interior.

Flybridge

- Bridge Ladder (Aluminum w/Polymer Treads)
- Console Locker
- Full Instrumentation
- Helm & Companion Pedestal Seats
- Lounge Seating
- Retractable Electronics Console
- Safety Rails (Aluminum w/Double Alt Rail)
- Stowage Locker
- Watertight Receptacles (12V & 110V)

Additional Description

Interior Selection

- High Gloss Finish
- Dinette

Additional Description

- Live Baitwell
- Cockpit Boarding Box
- Engine Room Access
- Fishbox w/Hinged Hatch
- Lazarette Access
- Rod Holders (4)
- Side Stowage Lockers - Port & Starboard
- Tackle Center w/Sink, Storage & Icebox
- Transom Door

Additional Description

Salon

- 2 Bar Stools
- Carpeting w/Sound Reduction Padding
- Climate Controls
- Cocktail Table (Not with Plan C)
- Custom Blinds
- Designer Counter Tops
- Designer Fabrics
- Designer Window Valances
- Entertainment Center w/TV, VCR & DVD Stereo
- System w/CD and FM Antenna
- L-Lounge w/Rod Storage
- Tinted Side Windows
- Throw Pillows
- Upholstered Headline

Master Stateroom

- Bedspread & Pillow Shams - Quilted
- Carpeting Throughout
- Climate Controls
- Full-Length Mirror
- Hanging Locker (Cedar-Lined w/Light)
- Headboard-Padded
- Linen Drawers
- 5" Mattress - Quilted
- Overhead Hatch w/Screen & Sunshade
- Storage Lockers
- Throw Pillows
- Walk-About Berth
- AM/FM/CD Stereo
- 13" T.V.

Guest Stateroom

- Carpeting Throughout
- Designer Bedspreads & Pillow Shams - Quilted
- Hanging Locker (Cedar-Lined w/Light)
- Linen Drawers
- 5" Mattress-Quilted
- Double Bed
- Full-Length Mirror

Head

- Custom Flooring
- Designer Countertops
- Duplex Outlet (110V-GFI)
- Electric Head
- Enclosed Stall Shower
- Exhaust Fan
- Medicine Cabinet
- Mirrored Ceiling
- Sink
- Towel Bar
- Vanity Storage

Additional Description

- AC/DC Distribution Panel w/110V & 12V
- Magnetic Breakers & Integral Generator
- Controls; AC & DC Voltmeters; Line Monitor & Alarm; Bilge Pump Indicator Lights;
- Engine & Generator Hourmeters
- AC/DC Converter
- Batteries-Marine (3 @ 12V)
- CATV & Phone Connection
- Color-coded, Harnessed Wiring System
- Duplex Service Throughout (110V)
- Dynaplate
- GFI Protection-Heads & Galley
- Internal Bonding system (Copper)
- 50 AMP Shore Connection
- 50 AMP Shore Cord (220V) - 50ft.
- Tinned Copper Strand Wiring

Additional Description

- 2 Burner Electric Stove
- Custom Flooring
- Designer Countertops
- Designer Sink & Faucets
- Drawers, Locker & Dish Stowage
- Microwave/Convection Oven
- Refrigerator & Freezer (110V) (Varies with Layout)
- Upholstered Headliner

Additional Description

- Anchor
- Anchor Line (300 ft.)
- Auto/Manual Fire Extinguishing System
- Battery Safety Boxes
- Battery Parallel Switch
- Battery Shut-Off Switches
- Bilge Blowers (12V)
- 3 Bilge Pumps (Auto/Manual) w/Alarms
- Electronic Compass
- Emergency Flare Kit (USCG Approved)
- Engine Alarms
- 3 Fire Extinguishers (USCG Approved)
- First-Aid Kit
- Fog Bell
- Horns
- 6 Life Vests (USCG Approved)
- Molded Skid Resistant Surface On All Walk Decks
- Personal Floatation Device (Type IV-Throwable)
- Sea-Cocks (Thru-Bolted) Central Sea-Chest
- Tempered Safety Glass (Tinted, All Windows)
- Ventilated Engine Compartment
- Zinc Annodes

Additional Description

- Single Lever Controls
- Engine Room Insulation (Acoustical/Thermal)
- Exhaust Mufflers
- External Sea Water Strainers
- Fresh Water Cooling-Engines
- Fresh Water Cooling-Generator
- Fuel Lines-Flexible Aircraft Type
- Fuel Tank-Fiberglass
- Generator-Diesel
- Generator Exhaust Muffler
- Hydraulic Steering
- Oil Change System
- Propellers-Nibral
- Propeller Shafts-Aquamet 22
- Recessed Trim Tabs
- Rudders-Manganese Bronze

- Shaft Bearings-Rubber
- Struts (Intermediate)-Manganese Bronze
- Struts (Primary)-Manganese Bronze

Additional Description

- Hand Laid, Molded Fiberglass Components,
- Featuring Closed Cell Foam Coring in
- Hullsides, Decks & Cabintop
- Cabintop
- Individually Fitted Component Assembly
- Solid Hull Bottom, Keel & Chines
- Structural Steel Engine Mounting
- Structural Stringer System

Additional Description

- Anchor Roller & Retainer
- Anti-Fouling Bottom Paint
- Boat Hook
- Bow Chocks
- Bow Pulpit (Integral)
- Bow Rails (Welded Aluminum)
- 4 Spring Cleats
- 2 Stern Cleats & Hawse Pipes
- 2 Dock Fenders
- 4 Dock Lines (5/8" x 30')
- 2 Dock Lines (5/8" x 40')
- Guard Molding (316 S/S)
- Rope Deck Pipe
- Cabin Wing Hand Rail

Utilities

- Air Conditioning - Reverse Cycle 2-Zone
- Central Vacuum System

Exclusions

Owner's personal belongings.

Disclaimer

The Company offers the details of this vessel or yacht in good faith but cannot guarantee or warrant the accuracy of this information nor warrant the condition of the vessel. A buyer should instruct his representatives, agents, or his surveyors, to investigate such details as the buyer desires validated. This vessel or yacht is offered subject to prior sale, price change, or withdrawal without notice.

PHOTOS

Manufacturer Provided Image



Manufacturer Provided Image



Manufacturer Provided Image



Manufacturer Provided Image



Manufacturer Provided Image

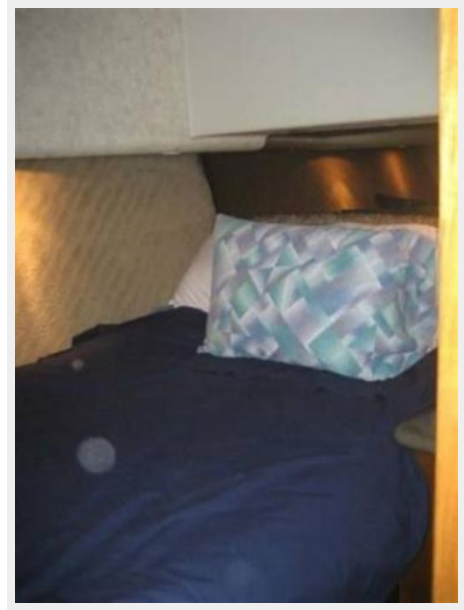


Manufacturer Provided Image

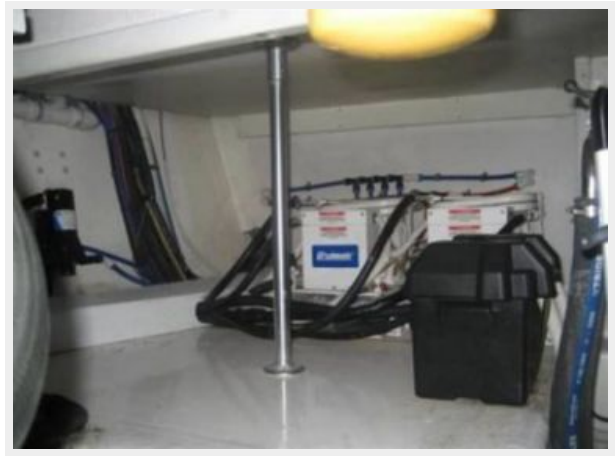




























CONTACTS

Andrey Shestakov, leading yacht broker of the sales department of Shestakov Yacht Sales Inc. Shestakov Yacht Sales Inc., the official representative of the Miami/Fort Lauderdale FL headquarters.

Contact details

Email: andrey@shestakovyachtsales.com

Web: shestakovyachtsales.com/en/

Telephones

USA: +1(954)274-4435

Office hours

Monday – Saturday: **9:00 - 21:00** EDT

Sunday: **closed**

Address



Harbour Towne Marina, 850 NE 3rd St,
STE 213, Dania, FL 33004