

46FT 1986 POST 46' SPORTFISH — POST



Builder: POST

Year Built: 1986

Model: Sport Fisherman

Price: PRICE ON APPLICATION

Location: United States

LOA: 46' 0" (14.02m)

Beam: 15' 8" (4.78m)

Max Draft: 4' 0" (1.22m)

Cruise Speed: 20 Kts. (23 MPH)

Max Speed: 24 Kts. (28 MPH)

Our experienced yacht broker, Andrey Shestakov, will help you choose and buy a yacht that best suits your needs 46ft 1986 Post 46' Sportfish — POST from our catalogue. Presently, at Shestakov Yacht Sales Inc., we have a wide variety of yachts available on our sale's list. We also work in close contact with all the big yacht manufacturers from all over the world.

If you would like to buy a yacht 46ft 1986 Post 46' Sportfish — POST or would like help answering any questions concerning purchasing, selling or chartering a yacht, please call +1(954)274-4435

TABLE OF CONTENTS

TABLE OF CONTENTS	2
SPECIFICATIONS	3
Basic Information	3
Dimensions	3
Speed, Capacities and Weight	3
Accommodations	3
Hull and Deck Information	3
Engine Information	4
DETAILED INFORMATION	5
46' Post	5
Exclusions	6
Disclaimer	6
PHOTOS	7
CONTACTS	10
Contact details	10
Telephones	10
Office hours	10
Address	10

SPECIFICATIONS

Basic Information

Category: Sport Fisherman

Model Year: 1986

Year Built: 1986

Country: United States

Dimensions

LOA: 46' 0" (14.02m)

Beam: 15' 8" (4.78m)

Max Draft: 4' 0" (1.22m)

Speed, Capacities and Weight

Cruise Speed: 20 Kts. (23 MPH)

Max Speed: 24 Kts. (28 MPH)

Water Capacity: 150 Gallons

Holding Tank: 75 Gallons

Fuel Capacity: 640 Gallons

Accommodations

Total Cabins: 2

Total Berths: 3

Total Heads: 2

Hull and Deck Information

Hull Material: Fiberglass

Engine Information

Engines: 2

Manufacturer: Detroit Diesel / Johnson & Towers

Model: 6 cylinder

Engine Type: Inboard

Fuel Type: Diesel

DETAILED INFORMATION

46' Post

Accommodations:

Two single and one queen berth. Two heads, two showers, galley sink, electric stove, freezer, pressure water system, dryer and air conditioning. Cabin sole is carpet with varnished joinerwork.

Construction:

Fiberglass. Self-bailing cockpit. White hull, blue boottop, black bottom and white deck.

Engines:

1986 Johnson and Towers 450hp twin diesel. Cable engine controls. According to the owner the engines are in good condition. Cruising speed of 20-24 mph.

Tanks:

640 gallon aluminum fuel tanks. 150 gallon water tank. 75 gallon holding tank.

Electrical:

12 volt starting system. 2500 watt inverter. Four batteries. Circuit breakered electrical panel and 50 amp shore powered

Ground Tackle:

35 H Danforth anchor. 200' anchor train.

Equipment:

Three electric bilge pumps and one manual. Two halon fire extinguishers, bell horn, four life preservers, horseshoe ring, docking lines, four fenders, bow pulpit and dinghy.

Electronics and Navigation:

Compass, VHF Apelco 5160, Ray 3604 radar, Robertson auto pilot, Northstar 952X GPS, DataMarine depth sounder and AM/FM radio.

Comments:

Black Eagle is absolutely the finest mid eighties 46 Post sport fish available on the market. This one owner boat has been professionally maintained by a very knowledgeable yachtsman. It has had only seasonal use in Maine and stored in heated storage every winter since new. It has never been fished and it has a very unique and beautifully maintained varnished aft bulkhead

and cockpit cover boards. The interior has had updating and is in excellent condition. Exterior surfaces still hold their luster and show well. The tender is stored on deck with davet. The engines and equipment have had regular and preventative maintenance performed as required and in anticipation of issues. Owner still loves the boat but looking to downsize to an express style cruiser. This is a MUST SEE to appreciate.

This boat is seriously for sale.

Exclusions

Owner's personal belongings.

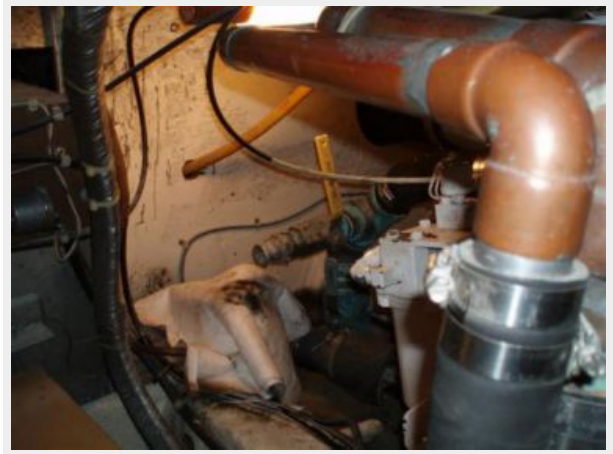
Disclaimer

The Company offers the details of this vessel or yacht in good faith but cannot guarantee or warrant the accuracy of this information nor warrant the condition of the vessel. A buyer should instruct his representatives, agents, or his surveyors, to investigate such details as the buyer desires validated. This vessel or yacht is offered subject to prior sale, price change, or withdrawal without notice.

PHOTOS







CONTACTS

Andrey Shestakov, leading yacht broker of the sales department of Shestakov Yacht Sales Inc. Shestakov Yacht Sales Inc., the official representative of the Miami/Fort Lauderdale FL headquarters.

Contact details

Email: andrey@shestakovyachtsales.com

Web: shestakovyachtsales.com/en/

Telephones

USA: +1(954)274-4435

Office hours

Monday – Saturday: **9:00 - 21:00** EDT

Sunday: **closed**

Address



Harbour Towne Marina, 850 NE 3rd St,
STE 213, Dania, FL 33004