

CHRISTIE LEE — HATTERAS



Builder: HATTERAS

Year Built: 1987

Model: Motor Yacht

Price: PRICE ON APPLICATION

Location: United States

LOA: 78' 2" (23.83m)

Beam: 18' 2" (5.54m)

Min Draft: 5' 0" (1.52m)

Cruise Speed: 17 Kts. (20 MPH)

Max Speed: 19 Kts. (22 MPH)

Our experienced yacht broker, Andrey Shestakov, will help you choose and buy a yacht that best suits your needs **Christie Lee — HATTERAS** from our catalogue. Presently, at Shestakov Yacht Sales Inc., we have a wide variety of yachts available on our sale's list. We also work in close contact with all the big yacht manufacturers from all over the world.

If you would like to buy a yacht **Christie Lee — HATTERAS** or would like help answering any questions concerning purchasing, selling or chartering a yacht, please call **+1(954)274-4435**

TABLE OF CONTENTS

TABLE OF CONTENTS	2
SPECIFICATIONS	4
Overview	4
Basic Information	4
Dimensions	4
Speed, Capacities and Weight	4
Accommodations	5
Hull and Deck Information	5
Engine Information	5
DETAILED INFORMATION	6
Accommodations	6
Salon	6
Galley	6
Aft deck	6
Pilothouse	7
Master Stateroom	7
VIP Stateroom	7
Guest Stateroom 2	7
Guest Stateroom 3	7
Office/Study	8
Electrical System	8
Electronics and Navigational Equipment	8
Audio And Visual Equipment	8
Engine /Mechanical Equipment	8
Hull	9
Deck Equipment	9
Water Sports & Recreation	10
History and recent	10

Remarks	10
Exclusions	10
Disclaimer	11
PHOTOS	12
CONTACTS	23
Contact details	23
Telephones	23
Office hours	23
Address	23

SPECIFICATIONS

Overview

ONE OF THE MOST CUSTOM HATTERAS EVER. REDESIGNED LAYOUT LIKE THE MODERN HATTERAS BUT EVEN BETTER FEATURES. MILLIONS SPENT IN THE PAST. A ONE OF A KIND HATTERAS. FULL TIME CAPTAIN MAINTAINED. This 78' Hatteras has been through constant major updates making her one of the nicest, most customized Hatteras of her size today. With her large aft deck with full stairs to the flybridge, huge master stateroom with his and hers and Jacuzzi, huge walk in closet, private stairs from the salon, walk through engine room, amidships VIP, additional 3 staterooms forward, new galley with granite floors, recent bright white paint job, re-done window frames, new interior and headliner, fresh engines, loaded and turn key, this custom Hatteras is a one of a kind opportunity with amazing layout and ready to go "turn key status". Seller desires to move up!

Basic Information

Category: Motor Yacht

Model Year: 1992

Year Built: 1987

Refit Year: 2015

Refit Type: partial

Country: United States

Fly Bridge: Yes

Cockpit: Yes

Dimensions

LOA: 78' 2" (23.83m)

Beam: 18' 2" (5.54m)

Min Draft: 5' 0" (1.52m)

Speed, Capacities and Weight

Cruise Speed: 17 Kts. (20 MPH)

Max Speed: 19 Kts. (22 MPH)

Displacement: 130000 Pounds

Water Capacity: 400 Gallons

Fuel Capacity: 2295 Gallons

Accommodations

Total Cabins: 5

Sleeps: 9

Total Heads: 4

Crew Cabin: 1

Crew Berths: 2

Hull and Deck Information

Hull Material: Fiberglass

Deck Material: Fiberglass

Hull Configuration: Modified V-Hull

Hull Color: WHITE

Hull Finish: Fiberglass

Hull Designer: Hargrave

Exterior Designer: Hargrave

Engine Information

Engines: 2

Manufacturer: General Motors

Model: 1271TI

Fuel Type: Diesel

DETAILED INFORMATION

Accommodations

This Custom 78' Hatteras sleeps 10 in 5 staterooms!!!. The extended custom master with his / hers heads and Jacuzzi is aft. The VIP has queen berth is amidships and can be accessed by the walk through engine room or from forward. The third stateroom is up and to starboard, the fourth is up to port (crew) and the fifth is upper lower twins forward. This is a one of a kind totally custom interior created by AMT (Marinemax Hatteras Dania) when the yacht was only 4 years old in 1991 to create what is now today a "standard desired layout" on newer Hatteras with the exception that the Master on this 78 Hatteras is the largest in her class with His and Hers / Jacuzzi, and huge walk in closet with separate stairs to the salon and walk through engine room. Over \$1 million has been spent over the past 10 years keeping this one of a kind 78 Hatteras above the rest and her initial redesign cost over \$900,000 in 1991-1992. This expansive 5th stateroom layout also is enhanced by an extra large aft deck with molded stairs to the huge FB, aft deck controls, and a functional full fishing cockpit with hot and cold shower, built in tackle storage, and extended fuel tankage.

Salon

The very large salon features a cream colored L-shaped Natuzzi leather couch with large cherry wood coffee table to port side upon entering from the aft deck. To starboard is a small built in wet bar sink with marble top. Moving forward is a custom stairway leading to the master stateroom and engine room. Forward of that on the starboard is the large entertainment center which holds a pioneer CLD 1030 CD video system, YAMAHA K420 cassette player and Adcom CFS six speaker selector for the surround sound. A custom cabinet provides storage and holds a pioneer CD player, Yamaha receiver, a 52" Element TV and a RCA direct TV satellite system with a modulator to all televisions. To port is a very large dining area that seats up to 8 at a beautiful cherry dining table. To port aft of the dining are two barrel chairs with side table. The recent 2015 interior refit included headliner and overhead lights throughout vessel, new marble flooring in the galley, helm area, and on the wet bar sink. and new carpet and runners throughout.

Galley

The galley is fully equipped with Frigidare Elite side-by-side refrigerator with freezer ice maker, WP appliances 2012 Coffee maker, can opener and a Black and Decker toaster oven. The cabinetry in the galley is in white mica and The flooring in the galley, settee area and wheelhouse is laid with South African granite. Starboard and across from the galley is the dining area that has a comfortable six person settee surrounded by mirrors.

Aft deck

Large 8' custom aft deck provides full fiberglass staircase to the flybridge which has hand rails and a large sliding hatch. On the flybridge there are handrails on the starboard side for safety when transiting the flybridge fore and aft. An opening door into the flybridge seating area makes this the preferred way to go to the flybridge when cruising, avoiding the steeper pilothouse steps. This is great for guests or kids that move from the cockpit and swim platform to the flybridge in bathing suits or just as easier flybridge access in general. There is a large teak table and teak chairs on the aft deck. Cockpit controls with thruster control make docking or light fishing much easier. The aft deck has hard sides and side windows to protect the aft deck from sea and spray. Second new boarding ladder added for direct aft deck boarding.

Pilothouse

Large pilothouse windows provide excellent visibility. These windows were removed and re-bedded during the 2002 paint job.

Master Stateroom

Accessed from private stairs from the starboard side salon this is the largest master stateroom available on any standard Hatteras under 100'. Centerline king berth against the aft bulk head. Ensuite his and her heads with a shared Jacuzzi between. Forward and to port is a huge 5' x 7' cedar lined walk in closet complete with a refrigerator and safe. To starboard is another closet, a mirrored vanity, an entertainment center complete with a VHS, stereo tuner, a 42" TV, and cabinets with granite surfaces.

VIP Stateroom

The VIP stateroom has a large queen berth with storage beneath making it a true VIP stateroom. En-suite access to head and separate stall shower. Cedar lined hanging locker. The headboard is mirrored with overhead storage and reading lights.

Guest Stateroom 2

The second guest stateroom is forward to port accessed which is 5 steps down from the pilothouse or two steps up from the mid VIP guest and one queen with storage upper bed with drawer storage and a small en-suite head with combo stand up shower.

Guest Stateroom 3

This third guest stateroom is in the port deck access. It has one queen bed with storage under to starboard with drawers and 32" TV. There is a full hanging locker and ensuite head with full shower. Either of these two forward guest staterooms can be used for crew but this has more

floor space and the larger head and therefore makes a better 3rd stateroom.

Office/Study

The forward guest and crew area was expanded to accommodate a lounge office with library and additional privacy door which can divide the library and bow stateroom from the port and VIP stateroom, creating a small foyer at the base of the pilothouse steps when all doors are closed . This is ideal for large families or charter guests that want privacy from the crew.

Electrical System

Two 20KW Northern Lights replaced 2009/2010 with approximately 400 smoh.. Two full banks of 8D batteries replaced in 2009/2010 charged by two marine chargers.100 amp 125/250V service from port or starboard and single service at cockpit for light load "med" mooring. 50 amp 220V power cords, 4 adapters, 2 phone and TV cables. Most of the electrical systems in this vessel have been replaced or updated during the last 6 years.

Electronics and Navigational Equipment

- Replace all helm gauges with new VDO in 2010 in wheel house/flybridge/engine room
- (4) ICOM M506 VHF radio in wheel house/flybridge
- Danforth Constellation compass
- Standard hailer/intercom MP 510 (cockpit & bow speakers)
- ACR Remote spotlight
- ACR 406Mhz EPIRB
- KVH Sat TV system with RCA receivers
- Compressed air horns
- Bennett trim tabs
- Panasonic CD/AM/FM stereo in pilothouse
- (4) RAY Marine E120 multi/speed/depth

Audio And Visual Equipment

Large 52" TV KVH Sat TV receiver KVH 5 SAT TV antenna Pioneer Audio Video Entertainment system Bose home theater speaker system Toshiba TV fwd guest TV in lower lounge RCA TV and JVC VCR in master Pioner Audio system in master Sony refrigerator in master closet

Engine /Mechanical Equipment

The engine room is extremely clean, awlgrip painted 2015, and shows like a yacht should!

Covington Detroit Diesel 12V71 TI's, 870 HP with ZF gears which were overhauled by W.W. Williams Detroit Diesel, Savannah, GA in late 2014. The owner wanted these engines more efficient for years of trouble free smoke free cruising. There was not a failure! Prior was a full 1999 major rebuild on the machinery. In 2000 new muffler's and risers were installed. There is an electric fuel priming and transfer system; electric oil changing system, dual 1000 Racor fuel filters per engine, (2) spare propellers stub shaft; and the list goes on..... Updated Galley Maid head system and updated air conditioning compressors.

- (2) Two 20KW Onan AC Totally rebuilt and maintained.
- New SMX CRUISAIR air conditioning systems 2010-2014.
- (2) Spare 38" x 36" 4 blade full cup Nibral Propellers
- 6' square Naiad stabilizers
- 1200 GPD watermaker in 2010
- (2) 45 gal water heaters
- Custom Stainless steel rudders (oversized)
- Manual engine gauges mounted in engine room
- Diamond plated floor
- CO2 fire extinguisher system updated 2014
- 3/4HP Ghorrell water pump 2013

Hull

Hull repainted in bright white for the more modern look. all black paint accent removed for the clean all white look. A complete bottom job was also done, pilothouse windows were removed and re-bedded, all systems gone through and updated.

Deck Equipment

- 600 Plow anchor w/ 300' chain
- (2) man lifeaft on aft deck
- (2) 7-step tide-ride boarding ladder
- (2) 5-step Marquipt boarding ladder
- Hatteras bow pulpit w/ Galley Maid windlass with wildcat
- Freshwater wash down system
- Seating forward of cabin trunk with cushions and covers
- Radar arch w/ mast hinged for low clearance
- (3) Windshield washers and wipers
- 600 ft 55# Danford anchor line
- (4) Fenders holders
- ACR electric remote search light

Water Sports & Recreation

2 Yamaha waverunners 850CC. Scooter excluded. Fully hydraulic 2500 Sea Crane Davit

History and recent

"CHRISTIE LEE" started life as a mint condition 68' Hatteras CKPMY and an experienced owner who could not find a Hatteras with the ideal layout purchased her and decided to rebuild her with no regard to cost. A major \$900,000 year long refit engineered and designed by Naval Architect Langlois & Nadeau, Inc., was completed in November 1992 at Associated Marine Technologies in Dania, Fl. -- (Now Marinemax Hatteras). This complex refit enhanced the original layout significantly to modern Hatteras standards by greatly enlarging the master stateroom and adding a his and her heads aft with center Jacuzzi tub and a very large walk in closet to port. The original guest cabin amidships has been altered to a true VIP suite. The forward crew section was expanded to accommodate two more staterooms with privacy door. The engine room was modified to a full width, walk through engine room like today's Hatteras. The original cockpit was incorporated into the master configuration and became the large open aft deck with an extended hard top with stairway to the flybridge from the aft deck with railing and a custom entry way into the flybridge seating area. A new cockpit was added, the rudders enlarged with new stainless ones, Naiad Stabilizers added and the entire yacht was painted in Imron. The flybridge was extended providing ample room for tenders and water toys. The cost of this year long refit was over \$900,000. Millions have been spent on her since and the current owner has her in excellent condition. In November 2014 the engines were totally majored with over \$150,000 spent on mechanical and interior work in the past year 2014-2015. Many interior updates Summer 2015. Complete bottom job fall 2018 and all new Silent flush toilets 2018.

Remarks

This is the most customized and well cared for classic Hatter CKPMY on the market today with low hours. Millions spent makes this the best deal today for a venerable classic 78 Hatteras with the more modern lower VIP layout. This 78' Hatteras has been through constant major updates making her one of the nicest, most customized Hatteras of her size today. With her large aft deck with real molded stairs to the flybridge, expanded master stateroom with his and hers and Jacuzzi, huge walk in closet, private stairs from the salon, walk through engine room, amidships VIP, additional crew forward, new galley with granite floors, recent bright white and paint job, re-done window frames, new carpeting, new interior, freshly rebuilt engines in 2015, new headliner and valances, this one of a kind very custom Hatteras is the best deal in her class today. She is totally loaded in ready to go "turn key status". Priced reduced for immediate sale.

Exclusions

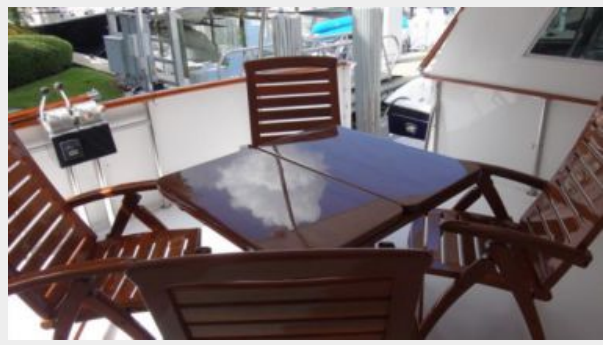
Owner's personal belongings.

Disclaimer

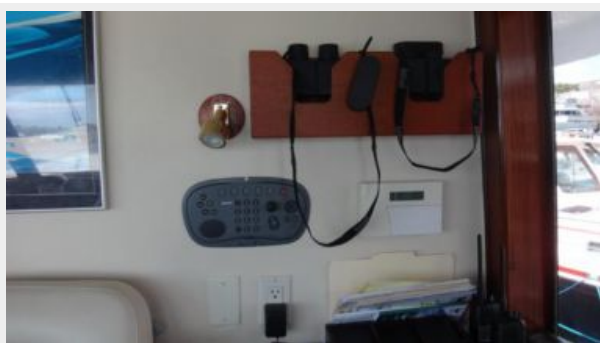
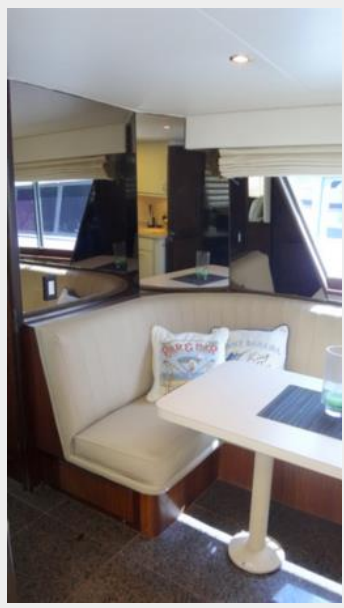
The Company offers the details of this vessel or yacht in good faith but cannot guarantee or warrant the accuracy of this information nor warrant the condition of the vessel. A buyer should instruct his representatives, agents, or his surveyors, to investigate such details as the buyer desires validated. This vessel or yacht is offered subject to prior sale, price change, or withdrawal without notice.

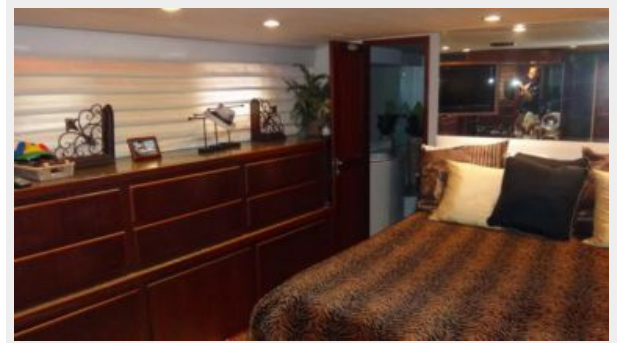
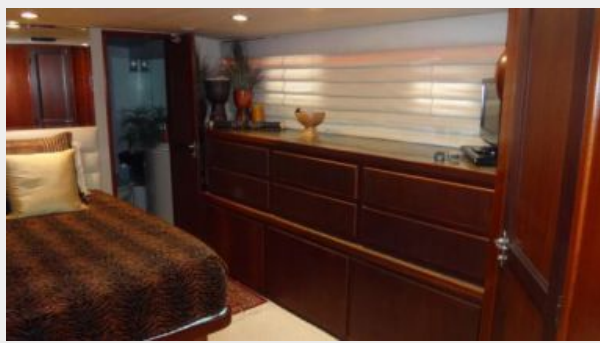
PHOTOS

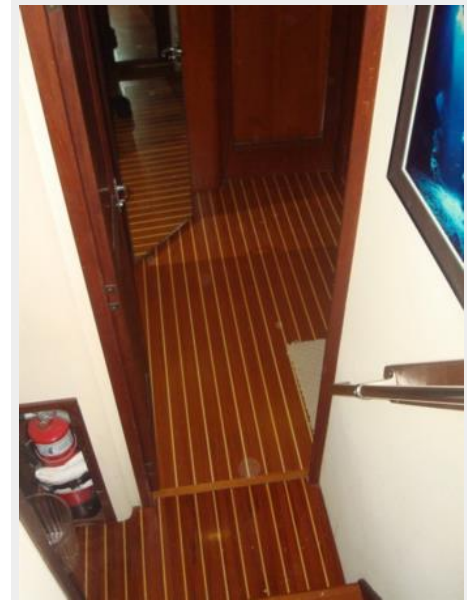


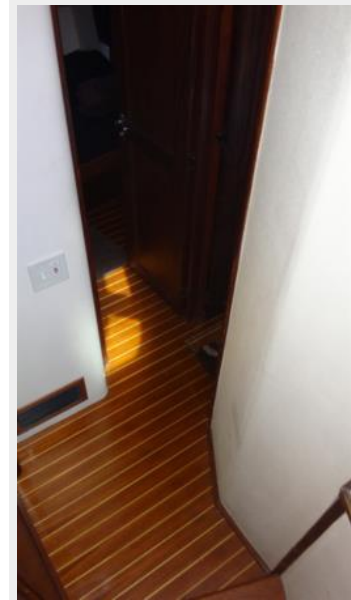


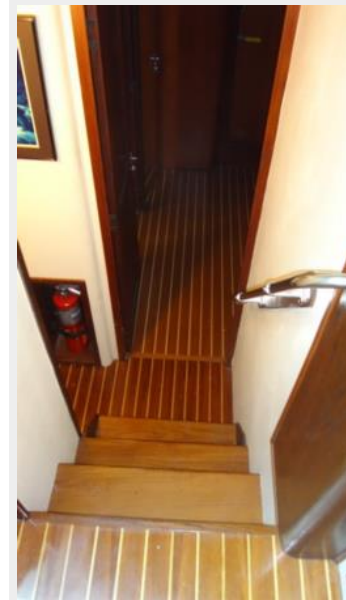
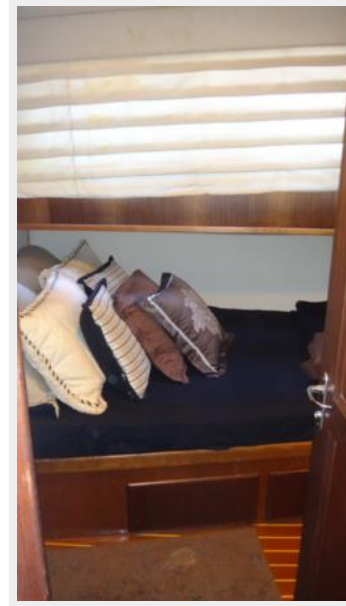


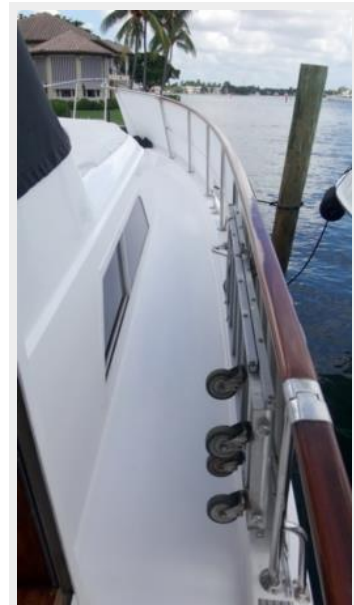
















CONTACTS

Andrey Shestakov, leading yacht broker of the sales department of Shestakov Yacht Sales Inc. Shestakov Yacht Sales Inc., the official representative of the Miami/Fort Lauderdale FL headquarters.

Contact details

Email: andrey@shestakovyachtsales.com

Web: shestakovyachtsales.com/en/

Telephones

USA: +1(954)274-4435

Office hours

Monday – Saturday: **9:00 - 21:00** EDT

Sunday: **closed**

Address



Harbour Towne Marina, 850 NE 3rd St,
STE 213, Dania, FL 33004