

FAMILY JEWELS — HATTERAS



Судостроитель: HATTERAS

Год постройки: 2001

Модель: Катер для спортивной рыбалки

Цена: **ЦЕНА ЯХТЫ ПО ЗАПРОСУ**

Местонахождение: United States

Длина общая: 60' 0" (18.29m)

Ширина: 17' 4" (5.28m)

Макс. осадка: 5' 10" (1.78m)

Крейс. скорость: 27 Kts. (31 MPH)

Макс. скорость: 33 Kts. (38 MPH)

Купить **FAMILY JEWELS — HATTERAS** а также выбрать подходящую вам яхту из нашего каталога яхт вам поможет опытный яхтенный брокер Андрей Шестаков. На сегодняшний день компания **Shestakov Yacht Sales Inc.** имеет большое количество яхт в собственном списке продаж, а также тесно сотрудничает со всеми крупными яхтенными производителями по всему миру.

Для того чтобы купить яхту **FAMILY JEWELS — HATTERAS** а также проконсультироваться по любому вопросу связанному с покупкой, продажей, чартером яхт позвоните по телефону **+7(918)465-66-44**.

ОГЛАВЛЕНИЕ

ОГЛАВЛЕНИЕ	2
ХАРАКТЕРИСТИКИ	5
Основная информация	5
Размеры	5
Скорость, вместимость и масса	5
Размещение	5
Корпус и палуба	6
Информация о двигателе	6
ПОДРОБНОЕ ОПИСАНИЕ	7
General Description	7
Salon	7
Galley and Dinette	7
Companionway	8
Master Stateroom	8
Master Head	8
Bow Stateroom	8
Guest Stateroom	8
Electronics	9
Exterior	9
Flybridge	9
Cockpit	9
Engine Room	10
Electrical	10
Updates in 2005	10
Updates 2013	10
Remarks	11
Exclusions	11
Исключения	11

Отказ от ответственности	11
ФОТОГРАФИИ	12
Salon	12
Salon	12
Salon	12
Salon	12
Galley	12
Galley	12
Dinette	13
Dinette	13
Master Cabin	13
Master Cabin	13
Master Cabin	13
Master Head	13
Master Head	14
VIP Cabin	14
VIP Cabin	14
Guest Head	14
Guest Cabin	15
Companionway	15
Laundry	15
Forward Helm Seating Area	15
Helm	16
Helm	16
Helm	16
Helm	16
Helm	16
Bow	16
Cockpit	17

Cockpit	17
Cockpit	17
Tower	17
Tower	17
Engine Room	17
Engine Room	18
Engine Room	18
Engine Room	18
Engine Room	18
Engine Room	18
Engine Room	18
Engine Room	18
Engine Room	19
Engine Room	19
КОНТАКТЫ	20
Контактная информация	20
Телефоны	20
Время работы	20
Адрес	20

ХАРАКТЕРИСТИКИ

Основная информация

Тип судна: Катер для спортивной рыбалки

Подкатегория: Convertible

Модельный год: 2001

Год постройки: 2001

Страна: United States

Верх: 2359

Открытая палуба мостика: Да

Кубрик: Да

Размеры

Длина общая: 60' 0" (18.29m)

Ширина: 17' 4" (5.28m)

Макс. осадка: 5' 10" (1.78m)

Скорость, вместимость и масса

Крейс. скорость: 27 Kts. (31 MPH)

Крейсерская скорость поворота: 1850 Kts.

Макс. скорость: 33 Kts. (38 MPH)

Макс. скорость поворота: 2300 Kts.

Водоизмещение: 90000 Pounds

Вместимость воды: 200 Gallons

Вместимость сточного бака: 100 Gallons **Объем топливного бака:** 1600 Gallons

Размещение

Всего кают: 3

Спальные места: 6

Всего ком. состава: 3

Корпус и палуба

Материал корпуса: Fiberglass

Информация о двигателе

Двигатели: 2

Производитель: Caterpillar

Модель: 3412

Тип двигателя: Inboard

Тип топлива: Diesel

ПОДРОБНОЕ ОПИСАНИЕ

General Description

The Hatteras 60 Convertible has been one of the most popular models built to date. FAMILY JEWELS was fish rigged in 2005 and is very clean. She features a three-stateroom, three head arrangement with two walk around queens and an over/under berth. Features include fluted wood valances with blinds, an under counter refrigerator and freezer units, a four-burner cook top, and a microwave/convection oven. Below, two of the three staterooms feature queen berths with storage and private heads. The 151 square foot cockpit is primed for fishing with a bait and tackle center, a drop in bait freezer, rod holders, seawater and freshwater washdowns, a flush in deck storage box with macerator pump, and a refrigerated compartment, teak cockpit, and Release Fighting chair. The flybridge offers a top loading drink box, rod storage in the forward locker, and a port seat, as a full array of electronics updated in 2005 and again in 2013, Additional features to this boat is the polished tower and Release Helm chairs and teak pod.

Salon

The salon provides for a High Gloss cherry interior wood with large windows. Air flows through fluted soffits allowing air to disburse through the salon. To port, a custom L shaped sofa with storage underneath surrounds the custom coffee table that also provides storage. To starboard a pop up 42" TV is hidden behind bottle and glass storage, with an icemaker and stereo system.

- Custom L shaped sofa with storage underneath (new cushions Jan 2012)
- Custom wooden coffee table with storage
- 42" Samsung TV on lifts so it hides away
- Yamaha stereo receiver
- Yamaha 6 cd changer
- Whirlpool cube ice maker
- Sony 6 DVD changer
- Direct TV receivers
- ICOM VHF (hidden in entertainment center)
- Custom wet bar
- Whirlpool cubed ice maker
- Carpet
- Removable vinyl headliner
- Wood valances with 1" wood blinds
- Fixed frameless windows with safety glass
- AC and DC light fixtures
- AC outlets

Galley and Dinette

The galley features a Peninsula style U shape with under counter Sub Zero refrigeration, dishwasher, microwave convection oven, four burner cooktop, good storage and granite countertops. Adjacent to the galley is a U shaped dinette with plenty of seating.

- 4 Sub Zero under counter drawer refrigerators
- Kenmore dishwasher
- Granite countertops and Back splashes
- Granite settee top
- Granite floor with key tiles
- Sharp Microwave/Convection oven
- U shaped dinette (new cushions Jan 2012)
- Stainless steel sink
- Extra large pantry forward of galley
- Garbage Disposal
- Water Level gauge
- AC and DC lights
- AC duplex outlets

Companionway

Companionway leads to the lower arrangement, three stateroom and three heads

- Carpeting • Vinyl headliner • DC light fixture • Flush panel doors to staterooms • Steps to salon
- Washer/dryer

Master Stateroom

The master stateroom provides for a queen walk around berth with storage underneath. You'll find good storage in this stateroom with a cedar lined locker as well as dresser and entertainment system.

- Queen walk around berth with cedar lined Storage underneath • Cedar lined full double closet
- Dresser with entertainment center above • Nightstands with lamp • Toshiba TV • Yamaha stereo receiver • Sony 6 disk changer • Carpet • Removable headliner • Stereo Speakers • Full length mirror • Private access to head

Master Head

The master head provides granite countertops and floors with keystone tiles, wood cabinetry, plexi mirror on ceilings and a stall shower.

- Mirrored vanity with storage beneath • Granite counters with under mount sink • Granite flooring with key tiles • Mirrored overhead • Custom wall coverings • Overhead Bowmar hatch • Towel racks • Large shower with door • Freshwater toilet • AC and DC lights • AC outlet

Bow Stateroom

The bow stateroom offers a double berth with private access to its own head.

- Queen walk around berth with cedar lined storage underneath • Nightstands port and starboard
- Overhead Bowmar deck hatch • Custom Bedcovers and sheets • Large cedar lined closet with shelves • Toshiba LCD TV • Sony DVD player • Ample drawers and cabinets • carpet • AC and DC lighting • AC duplex outlets • Full length mirror • Private access to head

Guest Stateroom

The over under berth in the 3rd stateroom also provides access to the day head.

- Over/under bunks • Custom Bedspreads and sheets • Cedar lined hanging closet • Central

vacuum connection in closet • Private entrance to day head • Drawers under lower bunk
• Nightstand with drawers • AC and DC lighting • AC outlets • Carpeting

Electronics

• Furuno 96 mile radar • Simrad auto pilot • 2 Icom M604 VHF's with upgraded mics • 2 GARMIN 4212 GPS NEW 2013 • GARMIN GPS. TOWER. NEW 2013 • Furuno RD 33 GPS plotter Sea Temp • Richie compass • Hatteras ship system alarm • Caterpillar "CAT Vision" engine monitoring system, NEW 2013 • Trim Tabs • Video Monitoring system with cameras in salon and engine room • Maxwell windless with helm control • Tracvision satellite TV • ARC spotlight with helm control • Backup emergency engine controls

Exterior

• Freshwater washdown cockpit, bow, and bridge • Navigation lights • Forward and aft spreader lights • Nonskid on covering boards (new Feb 2012) • Bow pulpit and bow rail • Pipewelders Tuna tower • Awl Grip Paint 2005 • Anchor with line and chain • 4 underwater lights

Flybridge

On the open flybridge, a large console features pod style helm with a Peninsula Helm station with an array of electronics updated in 2005/2013. L shaped seating forward of the console to and to starboard provide additional storage underneath. Twin Release teak ladder back helm and companion chairs and a varnished teak helm pod accent this nicely equipped helm.

• Pod style varnished teak helm • Single lever controls • Electric teaser reels in hideaway box in hard top • Phone booth style enclosure (new 2013) • Twin teak Release helm chairs • Dropdown radio box in hard top • Bench seat with rod storage underneath • Bench seat in front of helm with storage beneath • Large storage compartment in brow • Top loading drink box • Engine synchronization control • Compass • Hydraulic power steering • AC weatherproof receptacle

Cockpit

The Hatteras 60 Cockpit is designed for sport fishing. A single large fish box with macerator is found in deck and this boat features a transom fish box with tuna tubes. A freezer is built into the tackle center as is additional storage. The cockpit has teak decking added in 2005 along with a Release Marine Fighting chair with rocket launcher.

• 151 sq ft cockpit • Hatches to lazarette and fuel tank connections • Aluminum ladder to flying bridge • Shoreline electrical inlets 50 amp • Transom door • Shore water connection with pressure reducing valve • Salt and freshwater washdown • Bait Freezer • Deep storage tub,

starboard • Removable fish box with macerator, in deck • Molded transom fish box with tuna tubes • Steps with storage and door to deckhouse • Overhead lights under flybridge overhang • Release Fighting chair with rocket launcher • Telephone CATV inlet • Rod holders • Teak Cockpit • Four underwater lights • Stereo Speakers • 2 12 V PLUG UNDER GUNNEL, NEW 2013

Engine Room

The engine room provides easy access to equipment and the bilges are painted white for ease of cleaning and maintenance.

• Sea Recovery water maker • Fuel transfer system with isolated backup system • Hydraulic power steering • Synchronizers • Trolling valves • Eskimo Ice Maker • 4 Cruiseair A/C units Salon unit new 2013 • Hot water heater • Fireboy Fire system serviced -2013 • Racor fuel filter system for mains and generator • Engine room ventilation blower and fan • Gauge panels for mains • Hush box covering generator 21.5 KW Onan Generator • AC Fluorescent lights • DC lights • Engine Hour meters • Steel braded fuel and steering lines • Fire extinguishing system • 30 Gallon hot water heater • Bilge pumps • Ball Valves on all underwater through hull fittings w/electrical bonding throughout • UL approved fiberglass fuel tanks • Oil changing system

Electrical

Hatteras is known for their attention to detail, and wiring is one of their strongest point. All wiring is tin coated and sealed in an insulation jacket. Wiring harnesses are tie wrapped every 6 inches and secured every 18 inches with easy access. Wiring is color coded and numbered at both ends, and is well documented in the owner's manual.

• ONAN 21.5kw Generator 5609 hours • 12v/24v DC electrical systems • 110v/220v electrical systems • Four 8D batteries • Battery parallel switch • Charles Auto battery charger • Two 50 amp shore cables • AC duplex outlets • Air conditioning with reverse cycle heating • DC distribution panel

Updates in 2005

• Pipe Welders tower with controls • Rupp outriggers • All new electronics • Awlgrip paint top to bottom • Teak cockpit • New style bridge ladder • New style salon door • Salon entertainment center • Salon TV on hydraulic lifts to hide away • 2 Release Helm chairs • Release fighting chair with rocket launcher • Polished aluminum bow rail • LCD TV and DVD player in VIP stateroom

Updates 2013

PHONE. BOOTH. ENCLOSURE BRIDGE CUSHIONS AIR HANDLERS SALON
COMPRESSOR GARMIN ELECTRONICS BRIDGE/TOWER EXHAUST RISERS FUSION
STEREO W JL AUDIO SPEAKERS CAT MONITORS ON BRIDGE FULL 5 STEP DETAIL
POLISH AND METAL COATINGS ALL ENGINE MAINTENANCE SERVICE IS UP DATE
3/2014 PERFORMED BY SMITH AND WICK DIESEL

Remarks

New to market, full time crew of 2 PALM BEACH MAINTAINED, Up to date service on CAT 1400 HP ENGINES w/NEW CAT DISPLAYS .ELECTRONICS UPGRADES. Paint and tower shine, fish ready for the summer. A go to sea boat, proven fish raiser. Many recent upgrades. Owner says sell. Asking \$599,000

Exclusions

While every effort was made to list all pertinent included equipment aboard FAMILY JEWELS, there are some personal belongings aboard. Prospective purchasers should assume any item not specifically mentioned herein will not convey at closing.

Исключения

При продаже яхты исключаются личные вещи владельца.

Отказ от ответственности

Компания предоставляет описание судна или яхты добросовестно, но не может гарантировать точность этой информации, а также не ручается за техническое состояние. Покупатель должен проинструктировать своих агентов или оценщиков исследовать представленную информацию более подробно, по собственному желанию. Продажа судна или яхты, изменение цены или снятие с продажи будет происходить без предварительного уведомления.

ФОТОГРАФИИ

Salon



Salon



Salon



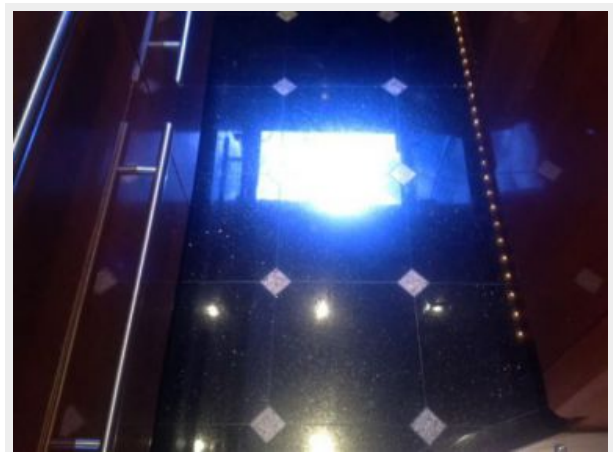
Salon



Galley



Galley



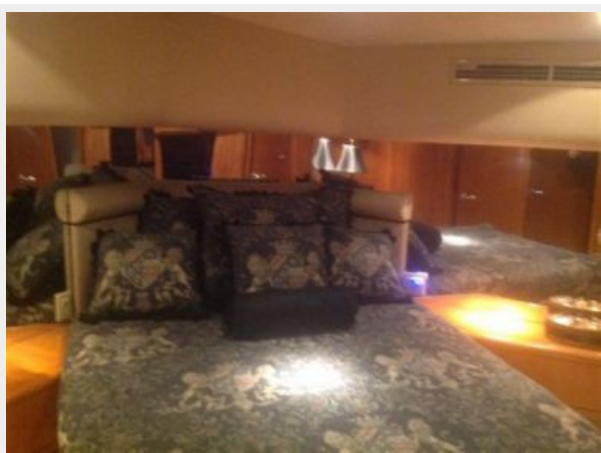
Dinette



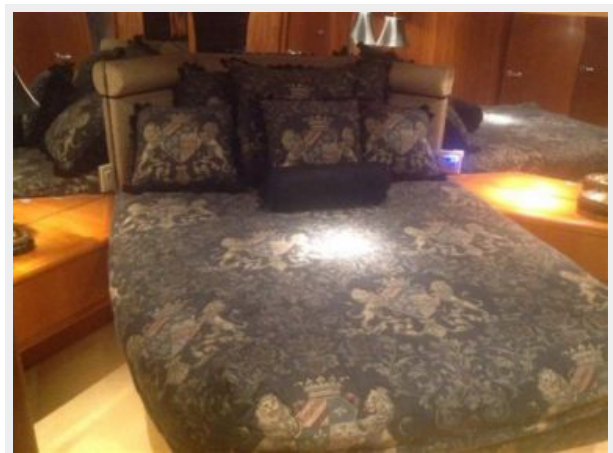
Dinette



Master Cabin



Master Cabin



Master Cabin



Mater Head



Master Head



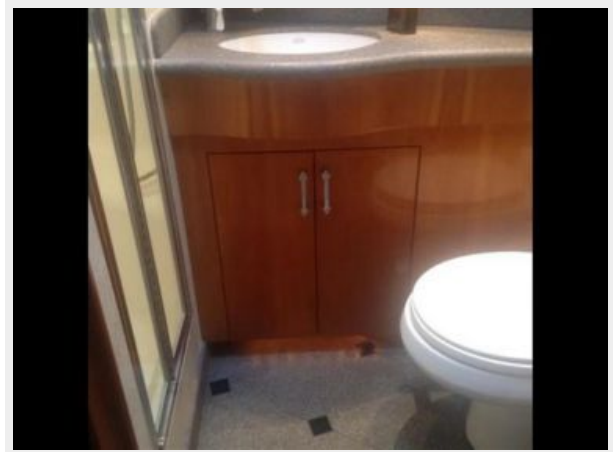
VIP Cabin



VIP Cabin



Guest Head



Guest Cabin



Companionway



Laundry



Forward Helm Seating Area



Helm



Helm



Helm



Helm



Helm



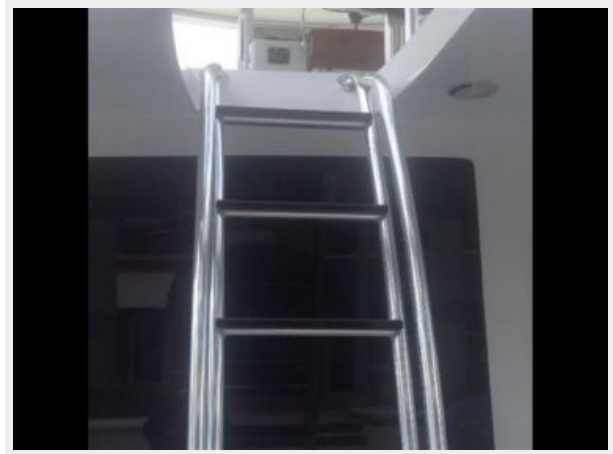
Bow



Cockpit



Cockpit



Cockpit



Tower



Tower



Engine Room



Engine Room



Engine Room



Engine Room



Engine Room



Engine Room



Engine Room



Engine Room



Engine Room



КОНТАКТЫ

Андрей Шестаков (Andrey Shestakov) – ведущий яхтенный брокер отдела продаж яхт и судов компании Shestakov Yacht Sales Inc. Официальный представитель Shestakov Yacht Sales Inc. для русскоговорящих клиентов в центральном офисе компании в Майами/Форт Лодердейл/Флорида/США.

Контактная информация

Email: andrey@shestakovyachtsales.com

Web: shestakovyachtsales.com

Телефоны

Краснодарский край: **+7(918)465-66-44**

США, Майами, Флорида: **+1(954)274-4435**

Время работы

Понедельник – Суббота: **9:00 - 21:00**
EDT

Воскресенье: **Закрето**

Адрес



Harbour Towne Marina, 850 NE 3rd St,
STE 213, Dania, FL 33004