

32FT 1985 TROJAN F-32 — TROJAN



Builder: TROJAN

Year Built: 1985

Model: Motor Yacht

Price: PRICE ON APPLICATION

Location: United States

LOA: 32' 0" (9.75m)

Beam: 13' 0" (3.96m)

Min Draft: 2' 6" (0.76m)

Our experienced yacht broker, Andrey Shestakov, will help you choose and buy a yacht that best suits your needs 32ft 1985 Trojan F-32 — TROJAN from our catalogue. Presently, at Shestakov Yacht Sales Inc., we have a wide variety of yachts available on our sale's list. We also work in close contact with all the big yacht manufacturers from all over the world.

If you would like to buy a yacht 32ft 1985 Trojan F-32 — TROJAN or would like help answering any questions concerning purchasing, selling or chartering a yacht, please call +1(954)274-4435

TABLE OF CONTENTS

TABLE OF CONTENTS	2
SPECIFICATIONS	4
Basic Information	4
Dimensions	4
Speed, Capacities and Weight	4
Accommodations	4
Hull and Deck Information	4
Engine Information	5
DETAILED INFORMATION	6
Upgrades	6
Electronics	6
Galley	6
General Equipment	6
Exclusions	7
Disclaimer	7
PHOTOS	8
Fresh Bottom	8
Bow pulpit	8
Brow	8
Swim Plat	8
Gunnel	8
Cockpit table	8
Cockpit	9
Salon	9
Salon	9
Galley	9
Refrigerator	9
Fwrđ Bunk	9

Head	10
Salon	10
Looking aft	10
Helm Chairs	10
VHF	10
Stbd engine	11
Pt engine	11
Engine rm	11
Batt switches	11
A/c controller	11
CONTACTS	12
Contact details	12
Telephones	12
Office hours	12
Address	12

SPECIFICATIONS

Basic Information

Category: Motor Yacht

Sub Category: Convertible

Model Year: 1985

Year Built: 1985

Country: United States

Dimensions

LOA: 32' 0" (9.75m)

Beam: 13' 0" (3.96m)

Min Draft: 2' 6" (0.76m)

Clearance: 12' 6" (3.81m)

Speed, Capacities and Weight

Displacement: 12000 Pounds

Water Capacity: 40 Gallons

Holding Tank: 20 Gallons

Fuel Capacity: 220 Gallons

Accommodations

Total Cabins: 1

Total Heads: 1

Hull and Deck Information

Hull Material: Fiberglass

Engine Information

Engines: 2

Manufacturer: Crusader

Model: 6.0 FWC EFI

Engine Type: Inboard

Fuel Type: Gas/Petrol

DETAILED INFORMATION

Upgrades

- Engine re power 2008
- Interior wood work 2008
- Hull painted 2011
- New A/C with reverse cycle heat and controller 2012
- All new running gear 2011
- Fresh bottom paint May 2013
- New AM FM CD stereo with subwoofer system
- New exterior window panels
- New Lemar Pro Fish windless
- New bilge pumps
- New refrigerator
- New 26" Toshiba flat screen TV

Electronics

- Garmin 740 S
- Navman Auto pilot
- Icom VHF
- Back up Horizon VHF
- VHF hailer
- Electric and magnetic compass

Galley

- 2 burner stove top
- SS sink
- Refrigerator/freezer
- Tons of storage

General Equipment

- Fresh and raw water wash down
- Cockpit table
- Cockpit bolsters
- Swim platform
- Aft sun shade

- Full bridge enclosure
- Spot light with remote
- Hot water heater
- 6.5 KW Kohler generator
- SS deck cleats

Exclusions

Owner's personal belongings.

Disclaimer

The Company offers the details of this vessel or yacht in good faith but cannot guarantee or warrant the accuracy of this information nor warrant the condition of the vessel. A buyer should instruct his representatives, agents, or his surveyors, to investigate such details as the buyer desires validated. This vessel or yacht is offered subject to prior sale, price change, or withdrawal without notice.

PHOTOS

Fresh Bottom



Bow pulpit



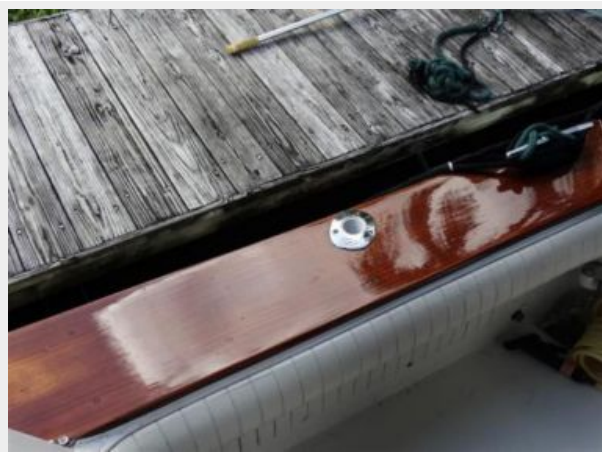
Brow



Swim Plat



Gunnel



Cockpit table



Cockpit



Salon



Salon



Galley



Refrigerator



Fwrd Bunk



Head



Salon



Looking aft



Helm Chairs



VHF



Stbd engine



Pt engine



Engine rm



Batt switches



A/c controller



CONTACTS

Andrey Shestakov, leading yacht broker of the sales department of Shestakov Yacht Sales Inc. Shestakov Yacht Sales Inc., the official representative of the Miami/Fort Lauderdale FL headquarters.

Contact details

Email: andrey@shestakovyachtsales.com

Web: shestakovyachtsales.com/en/

Telephones

USA: +1(954)274-4435

Office hours

Monday – Saturday: **9:00 - 21:00** EDT

Sunday: **closed**

Address



Harbour Towne Marina, 850 NE 3rd St,
STE 213, Dania, FL 33004