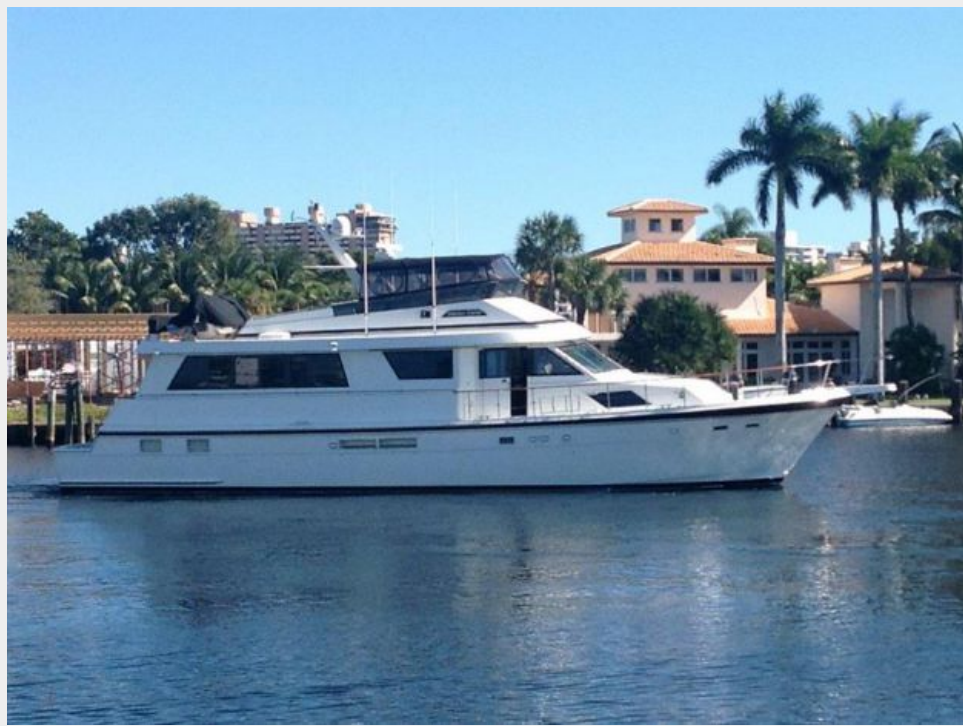


PERFECT TIMING — HATTERAS



Builder: HATTERAS

Year Built: 1989

Model: Motor Yacht

Price: PRICE ON APPLICATION

Location: United States

LOA: 70' 0" (21.34m)

Beam: 18' 2" (5.54m)

Max Draft: 5' 6" (1.68m)

Cruise Speed: 17.37952484 Kts. (20 MPH)

Max Speed: 18.248501082 Kts. (21 MPH)

Our experienced yacht broker, Andrey Shestakov, will help you choose and buy a yacht that best suits your needs **Perfect Timing — HATTERAS** from our catalogue. Presently, at Shestakov Yacht Sales Inc., we have a wide variety of yachts available on our sale's list. We also work in close contact with all the big yacht manufacturers from all over the world.

If you would like to buy a yacht **Perfect Timing — HATTERAS** or would like help answering any questions concerning purchasing, selling or chartering a yacht, please call **+1(954)274-4435**

TABLE OF CONTENTS

TABLE OF CONTENTS	2
SPECIFICATIONS	4
Overview	4
Basic Information	4
Dimensions	4
Speed, Capacities and Weight	4
Accommodations	5
Hull and Deck Information	5
Engine Information	5
DETAILED INFORMATION	6
Master Stateroom	6
Guest Stateroom	6
Salon	6
Galley	6
Pilothouse	7
Mechanical	8
Cockpit	8
Electronics and Navigation	9
Deck/Hull	9
Engine Room	9
Electrical	10
Fly Bridge	10
Miscellaneous	11
Upgrades	11
Exclusions	12
Disclaimer	12
PHOTOS	14
CONTACTS	21

Contact details	21
Telephones	21
Office hours	21
Address	21

SPECIFICATIONS

Overview

"Perfect Timing" was originally a Great Lakes based cruiser for roughly the first half of her life. The layout is the more desirable VIP configuration. In 1995 new (not rebuilt) 12V71TA engines were installed. At the time of original construction Hatteras added additional fuel capacity and the hydraulic bow thruster. Continually updated recent improvements include opening the galley to the salon providing an expanded counter and added storage. Recently hauled for anti fouling paint, zincs and stabilizer seals. (please see attached list to fully understand all that has been done to this beauty with the present owner over the past three years... it's impressive to say the least)

Basic Information

Category: Motor Yacht

Model Year: 1989

Year Built: 1989

Country: United States

Fly Bridge: Yes

Cockpit: Yes

Dimensions

LOA: 70' 0" (21.34m)

Beam: 18' 2" (5.54m)

Max Draft: 5' 6" (1.68m)

Speed, Capacities and Weight

Cruise Speed: 17.37952484 Kts. (20 MPH) **Max Speed:** 18.248501082 Kts. (21 MPH)

Water Capacity: 345 Gallons

Holding Tank: 200 Gallons

Fuel Capacity: 1896 Gallons

Accommodations

Total Cabins: 4	Total Berths: 6
Sleeps: 8	Total Heads: 4

Hull and Deck Information

Hull Material: Fiberglass	Deck Material: Fiberglass Sandwich
Hull Configuration: Modified V-Hull	Hull Color: White
Hull Finish: Fiberglass	Hull Designer: Jack Hargrave

Engine Information

Engines: 2	Manufacturer: Detroit Diesel
Model: 12V71TA	Engine Type: Inboard
Fuel Type: Diesel	

DETAILED INFORMATION

Master Stateroom

The master stateroom is aft and separated from the guest accommodations by the full width engine room. The head is ensuite with shower and Jacuzzi. There is a walk-in, cedar lined closet to starboard. The liner was new, 12/99. The berths have extra lighting and stereo speakers built-in overhead. A color flat screen TV is built in with Blue Ray player in the main salon. New fresh water head.

Guest Stateroom

Forward of the engine room, with access down stairs from the pilothouse, are three staterooms, each with a private head and shower. All have built-in TV's with VCR interface. Condiol Executive telephone/intercom system and stereo speakers. Wall coverings white, applied over teak paneling. Forward is an upper/lower berth crew stateroom. Next aft is a guest stateroom with twin lower berths. Down a few steps and aft is the nearly midship VIP stateroom with a tapered queen berth that lies athwart ships and custom padded paneling. The stacked washer and dryer and laundry center are built-in the hallway landing to the VIP stateroom. Delta heads.

Salon

The main salon has a Hancock & Moore leather L-shaped sectional sofa to port and two occasional chairs opposite. The big screen TV, Blue Ray and BOSE stereo are built into the cabinetry surrounding the starboard stairs to the master stateroom. Custom overhead lighting fixtures and Roman shades throughout. The salon was opened to the galley by removing the wall and adding a new island granite breakfast bar counter, additional cabinets and lighting. The effect is dramatic, the interior is significantly expanded visually.

- New 55" flat screen w/ Bose speaker system
- Blue Ray player
- Niles 6 speakers selector volume control
- SeaTel IV satellite TV
- New teak paneling in salon to replace old ultrasueded
- Arehur multiple video distribution system
- Removed bar and old television, Installed 55"-0 flat screen with Bose speaker system, granite counter, replaced carpet, some new furniture

Galley

The galley is forward with extra overhead lighting and teak parquet flooring. New granite

countertops and matching cabinetry with teak trim provide ample storage and work space in the well equipped galley. Opposite to starboard is the informal dinette with leatherette upholstery and an overhead light, roman shades and wall coverings.

- LG 2 door refrigerator w/freezer, water dispenser
- Blender
- New Garbage Disposal
- Kitchen Aid icemaker
- LG self cleaning 5 burner range with oven
- LG microwave oven
- Remodeled galley - All new stainless steel appliances
- Double ovens
- Ice Maker
- LG Dishwasher
- New custom granite countertops with breakfast bar kitchen
- All galley cabinets were redone
- Opened galley to Salon
- Deep sink (stainless w/ faucets)

Pilothouse

The pilothouse is forward on the main deck level. There is a teak parquet sole and a vinyl overhead with recessed lighting and stereo speakers. A custom bench seat is aft of the helm with a foot rest and chart storage below. The flybridge stainless steel stair with teak treads is to starboard. Port and starboard sliding doors open to side boarding gates and walkways. Extensive electronics are installed appropriately, both overhead and in the custom console.

- Reupholstered All Seating with new leather
- Replaced All Radios
- Install New GPS (Garmin) electronics with all programs for last cost, to Florida and Bahamas.
- Updated remote television system, including new camera on aft deck
- Tied electronics to fly bridge Garmin

Exterior:

- Approx \$60-\$70 K of exterior painting and fiberglass work to restore exterior including all gold leaf markings
- Sand blasted hull down to fiberglass primed coat with 8 coats of micron bottom paint.
- New stabilizer fins
- Installed new depth finder to tie into Garmin with fish finder
- New stainless anchor
- Rebuilt windlass
- Refurbished all exterior windows

- All new Pads with anti-absorb cushions throughout
- Refurbished pilot house doors
- All new canvas on fly bridge with full enclosure
- New tinted for all the house windows
- Refurbished 16' dingy with 50 hp outboard
- Installed new boarding ladder, rebuilt connection points to boat
- Installed all new antennas on flybridge

Interior:

- Replaced 5 of the 7 HV/AC units, \$35,000 then refurbished the other 2
- Replaced Master and VIP heads with new fresh-water system
- Replaced interior sewer/head lines
- Installed flat screen TV with blueray players in all 4 strooms
- Upgraded fly bridge stereo system
- Replaced flight fixtures in galley

Mechanical

- Installed water softener for entire boat (\$4K) (2011)
- Installed fresh water maker - sea water to fresh water (2012)
- Rebuilt starboard engine - 400 hours (2011)
- Rebuilt both generators
- Port engine was previously rebuilt has approx. 800 hours (2009)
- Replaced all hoses on both engines

Cockpit

Highlights: full engine controls port forward

- The engine controls have Hynautic hydraulic clutch and throttle controls
- Start and shut down switches
- Bow thruster controls
- Canvas cover
- Sea and fresh water washdowns
- Transom door to port
- 4 flush mount rod holders
- Flagstaff holder
- Stereo speakers
- Indirect Lighting
- 2 step board ladder with port and starboard brackets
- Step ladder to aft deck, starboard side

Electronics and Navigation

- Robertson AP9MKII autopilot
- Furuno 96 mile radar
- Datamarine chart link and Soderberg chart light
- Richie powerdamp compass flybridge
- Security system w/ closed circuit TV aft and 2 engine room cameras
- Barometer and clock
- VDO rudder position indicator
- Computer with Captain's program software from Maine to Mexico
- Northstar 952XD GPS/Plotter
- Northstar 800 Ioran C
- Datamarine depth, wind and speed indicator
- Condial Exective telephone/intercom/ 10 phone system
- VDO instrument panel
- Fuel Flowsan system

Deck/Hull

- New 110 lb stainless spade-X anchor with 300' chain
- UMT 8 step Tide-Ride ladder
- Marquipt 4 step side mount ladder
- Foredeck box drain system
- ACR Class C CAT 2 GPS/EPIRB
- Hand rails with new covers
- White sunscreen for pilothouse windshield
- Newer Hatteras windshield wiper system
- Full bridge cover and full cockpit cover
- Kahlenberg air horns
- 14' 5" 1999 Caribe RIB with 50 hp 4 stroke Yamaha, approx. 350 hour use
- Bow pulpit
- Helmseat and companion chairs
- Galley Maid windlass (rebuilt- March'14)
- Teak trim on house side painted to match the boat
- Varnished aft, bow hand rails and bow pulpit
- All electrical connectors in dunnage box
- ACR electronics search light controls
- Bow seat/sun lounges

Engine Room

- Tank tender fuel tank and water gauges

- Sentry CO2 fire extinguisher system
- Port main overhauled by Covenington Detroit Diesel (350 hours)
- Glendinning engine synchronizers
- Racor dual fuel filters
- Automatic, electric, manual bilge pumps
- Engine room instrument panel with full manual gauges
- (2) air conditioning raw water circulating pumps
- Craftsman air compressor
- Nutone central vacuum
- Galley Maid electric head
- Custom rod storage on ceiling of engine room
- (2) Craftsman tool chest
- Oil change system with 110V bronze gear pump and exterior mount high pressure connect
- Engine room sink
- Auto water fill for water tank through dockside water system
- 110V AC fluorescent lights
- DC lights
- Bradford White 40 gal. hot water heater (new)

Electrical

- 110V, 220V AC electrical systems
- (2) Onan 20 kw generators
- (4) 12V batteries
- (2) Glendinning Cable Masters for 50 amp cords, port and starboard
- 24V DC electrical systems
- LaMarche battery charger 60 amp
- Dockside electrical cable
- Low voltage transformer switches

Fly Bridge

Full bar with refrigerator, freezer Scotsman icemaker and sink, wrap around seating built-in aft plus 4 bar stools facing island bar top forward, hydraulic operated radar mast, helm and companion seats. Canvas top with 3 sided Strataglass enclosure with full aft curtain.

Highlights: Datamarine speed link, chart, plotter, chart link depth and wind indicator and compass.

- Synchronizer switch
- VDO instrumentation
- Controls for bilge pumps
- Battery parallel

- Trim tabs
- Bow thruster
- Stabilizers
- ACR search lights
- Hydraulic windlass and mast
- Furuno radar repeater
- Robertson autopilot control
- Shipmate VHF
- Condial telephone/intercom
- Horizon loud hailer
- Northstar 800 loran
- Color video monitor
- Stereo speakers
- Sony stereo with CD player

Miscellaneous

- 6 man Avon liferaft
- Bow thruster
- Naiad stabilizers (new fins)
- Cruise Air reverse cycle air conditioner unite with SMX digital controls
- 5 Blade props
- Spare 4 blade props
- Spare stub shaft

Upgrades

INCORPORATED WORK

- Remodeled the salon - Removed bar and old television, installed 55" flat screen with Bose speaker system, granite counter, replaced carpet some new furniture
- Remodeled the galley - All new appliances (stainless steel) double ovens, ice maker, dishwasher, granite counter tops with breakfast bar kitchen, granite top galley for eating.
- Remolded all cabinets (open galley to salon, deep sink (stainless steel faucets)
- TOTAL \$60,000.00

PILOTHOUSE

- Remodeled all seating with new leather
- Replaced radios
- Install new GPS (Garmin) electronics with all programs for last cost to Florida and Bahamas
- Updated remote television system, including new camera on aft deck
- Tied electronics to fly bridge Garmin

- TOTAL \$20,000.00

EXTERIOR

- Approx. \$60-70K of exterior painting and fiberglass work to restore exterior including new gold leaf markings
- Sand blasted hull bottom down to fiberglass painted coat with 8 coats of new bottom paint \$70,000.00
- New Stabilizers \$2,000.00
- Installed new depth finder to tie into Garmin with fish finder \$15,000.00
- New stainless anchor \$4,500.00
- Rebuilt windlass for anchor \$2,000.00
- Refurbished all exterior windows \$10,000.00
- All new pads with anti-absorption cushions \$7,000.00
- Refurbished pilot house doors \$2,500.00
- All new canvas on fly bridge with full enclosure \$8,000.00
- New tinted windows \$1,200.00
- Refurbished 16'-0" Dingy with 50 hp outboard \$5,000.00
- Installed new boarding ladder. Rebuilt connection points to boat \$4,000.00
- Installed all new antennas on flybridge \$3,500.00
- Install new tinting for topside windows
- Replaced 5 of the 7 HVAC units, refurbished the other two \$35,000.00
- Replaced master and VIP heads with new fresh water system, replaced interior sewer lines \$11,000.00
- Installed flat screen TV's with blue ray players in all bedrooms (4 each) \$4,000.00
- Upgraded fly bridge stereo system \$1,200.00
- Replaced light fixtures in galley \$1,000.00
- Installed water softener for entire boat \$4,000.00
- Installed fresh water maker, sea water to fresh water \$10,000.00
- Rebuilt starboard engine (2010) \$35,000.00
- Rebuilt both generators
- Port engine was previously rebuilt, has approx. 800 hours
- Replaced all hoses on both engines \$1,000.00

Exclusions

Owner's personal belongings.

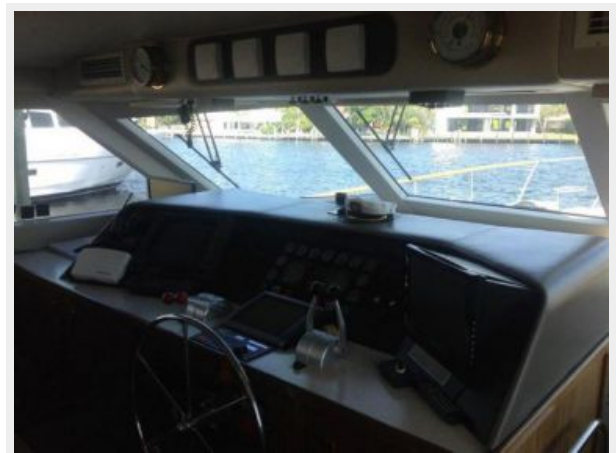
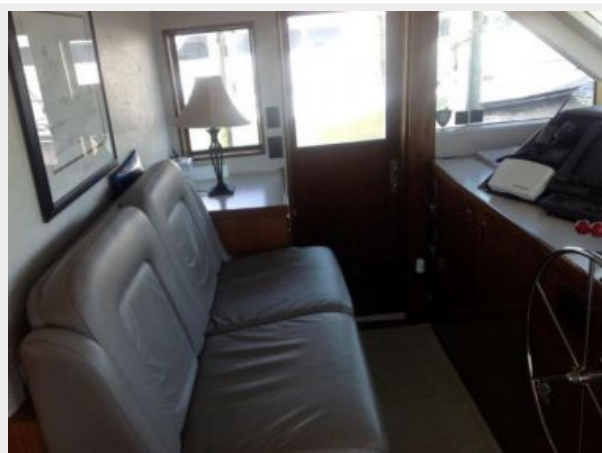
Disclaimer

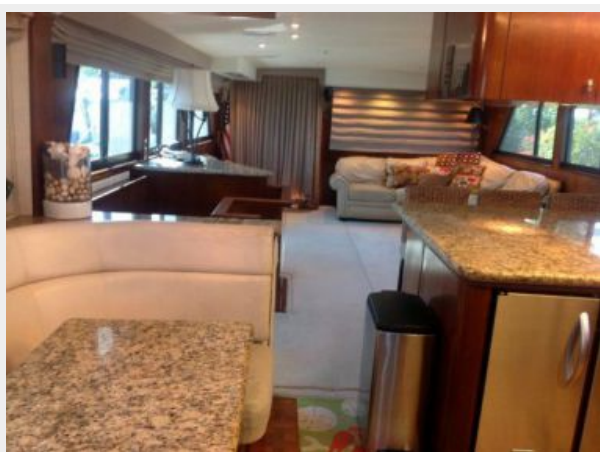
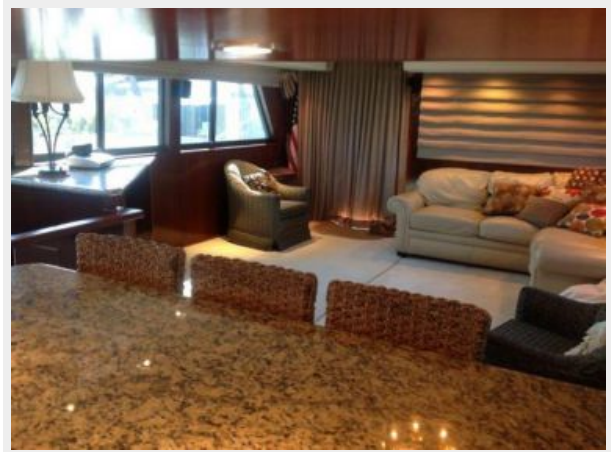
The Company offers the details of this vessel or yacht in good faith but cannot guarantee or

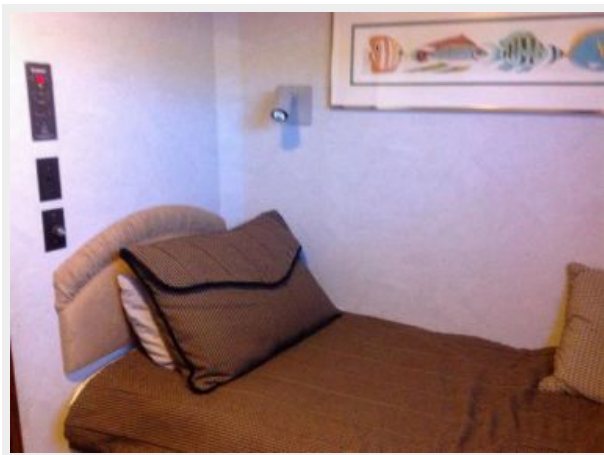
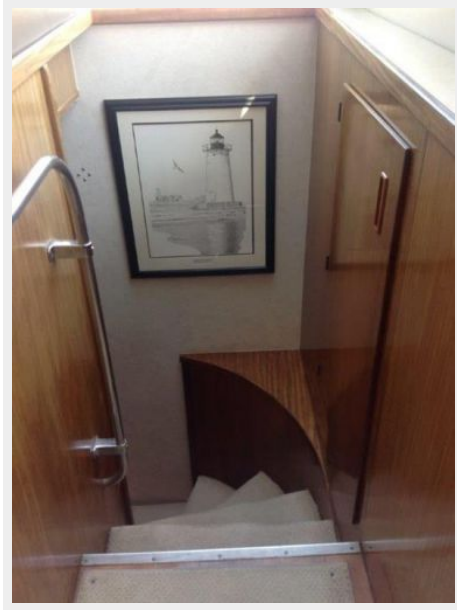
warrant the accuracy of this information nor warrant the condition of the vessel. A buyer should instruct his representatives, agents, or his surveyors, to investigate such details as the buyer desires validated. This vessel or yacht is offered subject to prior sale, price change, or withdrawal without notice.

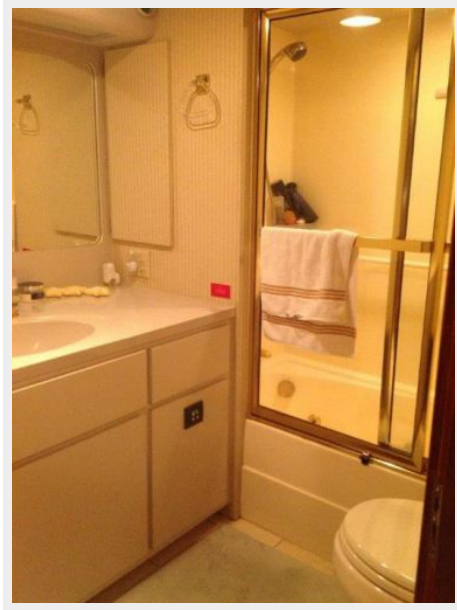
PHOTOS

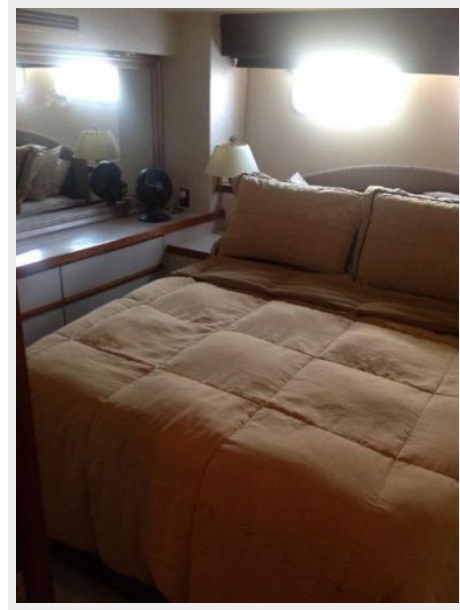


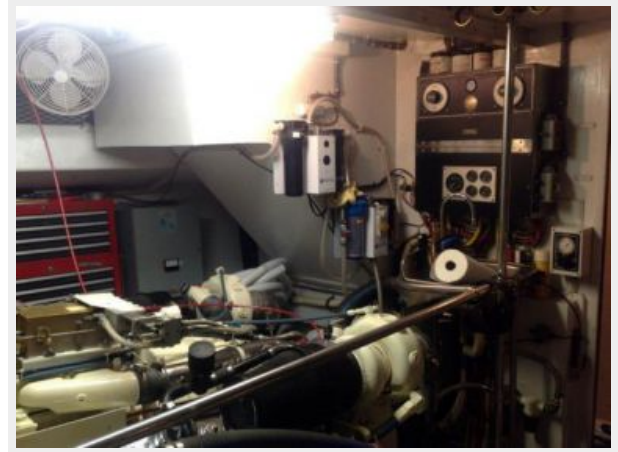












CONTACTS

Andrey Shestakov, leading yacht broker of the sales department of Shestakov Yacht Sales Inc. Shestakov Yacht Sales Inc., the official representative of the Miami/Fort Lauderdale FL headquarters.

Contact details

Email: **andrey@shestakovyachtsales.com**

Web: shestakovyachtsales.com/en/

Telephones

USA: **+1(954)274-4435**

Office hours

Monday – Saturday: **9:00 - 21:00 EDT**

Sunday: **closed**

Address



Harbour Towne Marina, 850 NE 3rd St,
STE 213, Dania, FL 33004