

ID — GRAND BANKS



Судостроитель: GRAND BANKS

Год постройки: 1984

Модель: Траулер

Цена: **ЦЕНА ЯХТЫ ПО ЗАПРОСУ**

Местонахождение: China

Длина общая: 57' 0" (17.37m)

Ширина: 15' 5" (4.70m)

Макс. осадка: 5' 1" (1.55m)

Крейс. скорость: 10 Kts. (12 MPH)

Макс. скорость: 16 Kts. (18 MPH)

Купить ID — GRAND BANKS а также выбрать подходящую вам яхту из нашего каталога яхт вам поможет опытный яхтенный брокер Андрей Шестаков. На сегодняшний день компания Shestakov Yacht Sales Inc. имеет большое количество яхт в собственном списке продаж, а также тесно сотрудничает со всеми крупными яхтенными производителями по всему миру.

Для того чтобы купить яхту ID — GRAND BANKS а также проконсультироваться по любому вопросу связанному с покупкой, продажей, чартером яхт позвоните по телефону **+7(918)465-66-44**.

ОГЛАВЛЕНИЕ

ОГЛАВЛЕНИЕ	2
ХАРАКТЕРИСТИКИ	3
Основная информация	3
Размеры	3
Скорость, вместимость и масса	3
Размещение	3
Корпус и палуба	3
Информация о двигателе	4
ПОДРОБНОЕ ОПИСАНИЕ	5
Yacht Introduction	5
Accommodations & Interior Layout	5
Audio & Visual Equipment	6
Galley	6
Machinery & Electrical Equipment	6
Navigational Equipment	6
Other Features	6
Deck Equipment	7
Upgrades & Added Equipment	7
Исключения	7
Отказ от ответственности	7
ФОТОГРАФИИ	8
КОНТАКТЫ	13
Контактная информация	13
Телефоны	13
Время работы	13
Адрес	13

ХАРАКТЕРИСТИКИ

Основная информация

Тип судна: Траулер

Подкатегория: Европа

Модельный год: 1984

Год постройки: 1984

Страна: China

Верх: Bimini Top

Размеры

Длина общая: 57' 0" (17.37m)

Ширина: 15' 5" (4.70m)

Макс. осадка: 5' 1" (1.55m)

Скорость, вместимость и масса

Крейс. скорость: 10 Kts. (12 MPH)

Дальность на крейсерской скорости:
2100

Макс. скорость: 16 Kts. (18 MPH)

Вместимость воды: 500 Gallons

Объем топливного бака: 1000 Gallons

Размещение

Всего кают: 3

Всего коек: 4

Спальные места: 8

Всего ком. состава: 2

Корпус и палуба

Материал корпуса: GRP

Материал палубы: Teak

Цвет корпуса: White

Отделка корпуса: Stainless Steel

Информация о двигателе

Двигатели: 2

Производитель: Detroit Diesel

Модель: GM 6V92TI

Тип двигателя: Inboard

Тип топлива: Diesel

ПОДРОБНОЕ ОПИСАНИЕ

Yacht Introduction

This Grand Banks 57 Europa offers a rare opportunity to buy one of only three of this design ever built by the famous Grand Banks factory. Extensively refitted and updated and only ever privately owned, this yacht is fully equipped and presents a turn-key opportunity to any buyer looking for a high quality long-range cruising displacement trawler. Her presentation is impressive as her owner has been meticulous in her keep, continually maintaining and upgrading the interior and the systems onboard. For a full appreciation of this fully equipped yacht, a viewing is highly recommended. **About Grand Banks and their Build History:** Grand Banks Yachts began its journey in 1956 as American Marine, Ltd. Founder Robert J. Newton and his sons, John and Whit, were running a custom boatyard on Junk Bay in Hong Kong, building heavy sailboats and big motor yachts to designs by the world's top marine architects - Sparkman & Stephens, William Garden, Nat Herreshoff, Ray Hunt and others. In 1962, they commissioned Kenneth Smith, another well-known marine architect, to design Spray - a 36-foot diesel powered cruising boat with humble, workman-like lines. A year later, inspired by Smith's design, the Newtons left custom yacht building to focus on producing the first of a line of boats that would come to be known as Grand Banks. Today, this design is recognized around the world as the Grand Banks Heritage Series, an iconic design built first of wood and then, beginning in 1973, of fiberglass at a new factory in Singapore. The design was so successful, in fact that the general styling of the GB was seized by a score of other builders for fleets of look-alike yachts sold under dozens of names. None, through, could match the quality of construction for which Grand Banks is famed. In 1993, Grand Banks took another traditional boat design - the lobster boat or "Downeast" cruiser - and definitively captured its style and spirit in the launch of the Eastbay Series. With its Ray Hunt design, teak toe rails, dark blue hull with a bright gold stripe - and a powerful pair of diesels underfoot - there was no other boat that combined ageless design and high performance like the Eastbay. In 2001, many Grand Banks owners were ready to step up to a larger and more luxurious vessel, but weren't prepared to sacrifice quality. The launch of the Aleutian Series of raised pilothouse yachts delivered with a new level of style and sophistication - along with the seaworthiness boaters have come to expect from a Grand Banks. In each series, Grand Banks has sought to capture the spirit of a nautical ideal - and combine it with state-of-the-art equipment, meticulous craftsmanship, and superior construction techniques. It is the reason Grand Banks yachts have become such icons around the world, and why they continue to meet the high standards of discerning, demanding boaters today.

Accommodations & Interior Layout

Accommodation onboard consists of 3 cabins and a dedicated pilot berth situated behind the helm station. The full width master state room has its own ensuite and the other two guest cabins share a single head and shower, which can also act as a day head. The double forward guest V-berth lies next to the mid guest which offers a double berth and can have a single bunk added to accommodate an extra guest. The cabins are located forward and below the wheelhouse

accessed by a circular staircase. Galley and saloon are integrated in the main living area of the yacht and flow out onto the aft deck which is fully covered. The flybridge is spacious and offers secondary mirrored controls to those found at the internal helm station.

Audio & Visual Equipment

Saloon and cabins are fitted with 17" flat screen TVs, DVD players with individual controls, surround sound systems, external waterproof speakers and a power TV antenna

Galley

The galley is located forward of the saloon to port with a double stainless steel sink outboard, bar island aft and stove and refrigerator forward. Equipment includes: La Germania 4 ring gas stove and oven Whirlpool microwave Large Frigidaire with freezer and ice maker Grand Banks custom designed cupboards with wine glass holders offer extra storage solutions in the galley Aft deck extra features: La Germania 5 burner gas stove and bar/drinks fridge in dedicated Grand Banks storage box, for exterior dining purposes.

Machinery & Electrical Equipment

Twin GM 6V92 Detroit diesel inboard engines. 530hp each Port: 4585 hours Starboard: 5021 hours x 2 Kohler Gen sets - 20kw Port: 2272 hours Starboard: 2770 hours Battery banks for all starting and running systems Master volt battery charger and transformers Bow thruster BEP tank monitor

Navigational Equipment

Internal helm station: Raymarine class D DSC VHF radio with a bridge remote Uniden hand held VHF radio with charger Simrad flat screen A.C radar Thrane and Thrane satellite phone External helm station: Ritchie compass Raymarine E120 unit with chartplotter and radar Both helm stations: Raymarine ST6002AP autopilot Raymarine ST60+ wind Raymarine ST60+ depth, speed, trip Antennas: Radar, Tracphone and VHF antennas on the mast

Other Features

Air conditioning systems: Marine Air/SCS - 5 units x 16,000BTU Water heater Watermaker: Aquamiser Plus 16.6 gallons per hour - in a stored state Other: water filtration and UV sterilization Washer Drier

Deck Equipment

Anchor: CQR 90lbs with 100 meters of 1/2" galvanized chain Anchor windlass: Lofrans Falkon 1500w/12volt Deck wash: Parmax 4 pump 5 bar Large spacious lazarette underneath aft deck, suitable for fender and deck equipment storage White bimini Sunbrella covers, to be replaced with brand new Blue Sunbrella sofa cushions All seating has custom made fitted covers Flybridge helm and other flybridge furniture such as storage boxes have custom made fitted covers Dinghy: Cholamark dinghy, rigid hull inflatable 3.6m with grey hypalon tubes and white cover Auxiliary motor: Yamaha Enduro, 15hp Large extended teak swim platform aft with bathing ladder Hot/cold shower aft La Germania 5 burner gas stove and drinks/bar fridge in dedicated Grand Banks storage box, for exterior dining purposes.

Upgrades & Added Equipment

Hull re-paint Engines overhauled and serviced Added 1 more Kohler gen set New upholstery internally - cushions, curtains, bedding Crew covers for boat storage - floors/furniture covers etc New sofa in saloon - upholstery and woodwork done by GB factory Two Grand Banks teak chairs in saloon - by GB factory Teak coffee table in salon - done by GB factory Mast down and all electronic replaced KBH sat phone and internet installed New radio/EPIRB/liferaft All Sunbrella bimini and canvas is being changed to new New dining table on Flybridge - by GB factory

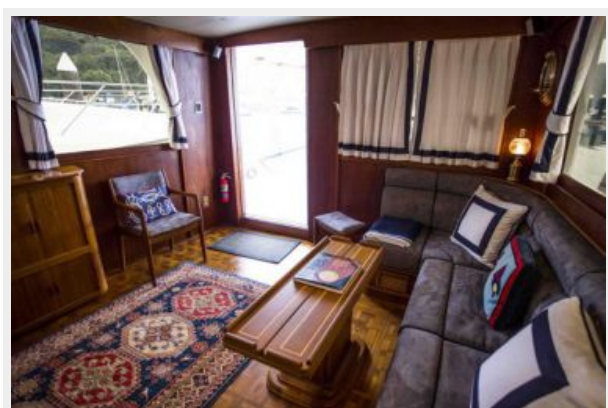
Исключения

При продаже яхты исключаются личные вещи владельца.

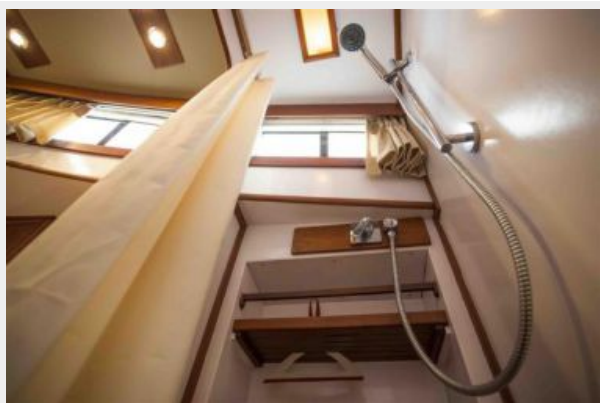
Отказ от ответственности

Компания предоставляет описание судна или яхты добросовестно, но не может гарантировать точность этой информации, а также не ручается за техническое состояние. Покупатель должен проинструктировать своих агентов или оценщиков исследовать представленную информацию более подробно, по собственному желанию. Продажа судна или яхты, изменение цены или снятие с продажи будет происходить без предварительного уведомления.

ФОТОГРАФИИ











КОНТАКТЫ

Андрей Шестаков (Andrey Shestakov) – ведущий яхтенный брокер отдела продаж яхт и судов компании Shestakov Yacht Sales Inc. Официальный представитель Shestakov Yacht Sales Inc. для русскоговорящих клиентов в центральном офисе компании в Майами/Форт Лодердейл/Флорида/США.

Контактная информация

Email: andrey@shestakovyachtsales.com

Web: shestakovyachtsales.com

Телефоны

Краснодарский край: **+7(918)465-66-44**

США, Майами, Флорида: **+1(954)274-4435**

Время работы

Понедельник – Суббота: **9:00 - 21:00**
EDT

Воскресенье: **Закрето**

Адрес



Harbour Towne Marina, 850 NE 3rd St,
STE 213, Dania, FL 33004