

## LA SIRENA — CHRISTENSEN



**Судостроитель:** CHRISTENSEN

**Год постройки:** 2000

**Модель:** Моторная яхта

**Цена:** **ЦЕНА ЯХТЫ ПО ЗАПРОСУ**

**Местонахождение:** United States

**Длина общая:** 141' 0" (42.98m)

**Ширина:** 28' 0" (8.53m)

**Макс. осадка:** 7' 0" (2.13m)

**Крейс. скорость:** 15 Kts. (17 MPH)

**Макс. скорость:** 19 Kts. (22 MPH)

Купить **LA SIRENA — CHRISTENSEN** а также выбрать подходящую вам яхту из нашего каталога яхт вам поможет опытный яхтенный брокер Андрей Шестаков. На сегодняшний день компания **Shestakov Yacht Sales Inc.** имеет большое количество яхт в собственном списке продаж, а также тесно сотрудничает со всеми крупными яхтенными производителями по всему миру.

Для того чтобы купить яхту **LA SIRENA — CHRISTENSEN** а также проконсультироваться по любому вопросу связанному с покупкой, продажей, чартером яхт позвоните по телефону **+7(918)465-66-44**.

# ОГЛАВЛЕНИЕ

ОГЛАВЛЕНИЕ	2
ХАРАКТЕРИСТИКИ	5
Обзор	5
Основная информация	5
Размеры	5
Скорость, вместимость и масса	5
Размещение	5
Корпус и палуба	6
Информация о двигателе	6
ПОДРОБНОЕ ОПИСАНИЕ	7
Accommodations	7
Recent Updates	7
Main Salon	8
Dining Salon	8
Galley	8
Laundry Room	9
Master Stateroom	9
Guest Stateroom Forward Port	9
Guest Stateroom Forward Starboard	9
Guest Stateroom Forward	9
Crew Quarters	10
Companionway	10
Pilothouse	10
Electronics and Navigational Equipment	10
Fly Bridge Equipment	10
Aft Deck	11
Deck and Misc. Equipment	11
Engine Room	12

Bosun's Locker	12
Wheelhouse	12
Tenders and Toys	12
Исключения	12
Отказ от ответственности	12
<b>ФОТОГРАФИИ</b>	<b>14</b>
Main Salon	14
Salon Bar	14
Salon Dining	14
Galley	14
Galley	14
Master Stateroom	14
Master Stateroom	15
Master Bath	15
Master Bath	15
Guest Stateroom, Forward Port	15
Guest Bath	15
Guest Stateroom, Forward Starboard	15
Guest Bath	16
Guest Stateroom Forward	16
Guest Bath	16
Crew and Lounge Area	16
Captain's Suite	16
Wheelhouse	16
Pilothouse Seating	17
Flybridge	17
Flybridge Alfresco Dining	17
Flybridge Bar and Lounge Seating	17
Flybridge Lounge Seating	17

---

Flybridge Sun Lounging	17
Flybridge Jacuzzi	18
Bow Seating	18
Aft Deck	18
Aft View//Swim Platform	18
Engine Room	18
Engine Room	18
Layout	19
<b>КОНТАКТЫ</b>	<b>20</b>
Контактная информация	20
Телефоны	20
Время работы	20
Адрес	20

# ХАРАКТЕРИСТИКИ

## Обзор

### Основная информация

Тип судна: Моторная яхта	Модельный год: 2000
Год постройки: 2000	Год обновления: 2013
Страна: United States	Верх: 2370

### Размеры

Длина общая: 141' 0" (42.98m)	Ширина: 28' 0" (8.53m)
Макс. осадка: 7' 0" (2.13m)	

### Скорость, вместимость и масса

Крейс. скорость: 15 Kts. (17 MPH)	Дальность на крейсерской скорости: 4000
Макс. скорость: 19 Kts. (22 MPH)	Чистый вес: 360 Pounds
Вместимость воды: 1530 Gallons	Вместимость сточного бака: 500 Gallons
Объем топливного бака: 10400 Gallons	

### Размещение

Всего кают: 4	Спальные места: 9
Каюты экипажа: 3	Койки экипажа: 5
Спальных мест экипажа: 6	

## Корпус и палуба

---

**Материал корпуса:** Composite

**Материал палубы:** Teak

**Комплектация корпуса:** Modified Deep Vee

**Дизайнер экстерьера:** Christensen

**Дизайнер интерьера:** Setzer Design Group

## Информация о двигателе

---

**Двигатели:** 2

**Производитель:** Detroit Diesel/MTU

**Модель:** 16V2000

**Тип двигателя:** Inboard

**Тип топлива:** Diesel

# ПОДРОБНОЕ ОПИСАНИЕ

## Accommodations

"La Sirena" is a magnificent raised pilothouse motoryacht with unsurpassed deckhouse spaciousness due to the single walk-around side deck to starboard. This impressive motoryacht's beautiful Honduran Mahogany interior wood is accented throughout the vessel by crown moldings, raised panel doors, cabinets and arched doorways including exotic marbles and granite throughout. Her layout provides accommodations for nine in owner's party along with three crew cabins which includes spacious crew quarters with captain's suite, laundry area, eat in galley and lounge. "La Sirena" features an enormous salon with formal dining, spacious convertible open & enclosed air-conditioned aft deck with a dining & lounging area. In addition to the salon there is a separate formal dining area w/ a Honduran mahogany dining table that seats 8. "La Sirena" also features an expansive open eat in country galley with all updated commercial appliances, walk in pantry, butlers entry to dining and a comfortable built in settee that seats 8. One of the most impressive feature of "La Sirena" boasts a massive multi functional flybridge deck, which includes al fresco dining, expansive lounging area with custom Dart sail awning, full granite bar with barbecue, refrigeration, microwave, dishwasher, custom crown seating for six, Jacuzzi with water jet massages and integrated reversible lounges. "La Sirena" also has a custom factory hard top, a 60" drop down movie theater TV and five custom Murray helm chairs. All new smart TV's, Blu-ray players, mini iPad control pads, Caribbean satellite receivers, 106' HD M- vision motorized HD movie theater projector screen w/ surround sound, the highest quality audio visual throughout the entire vessel.

## Recent Updates

All interior furnishings, aft deck and galley have been updated and modified in 2013.

- Ten year ABS inspection completed
- New decorator interior
- Aft deck reconfiguration and design
- Galley upgrades and settee reconfiguration
- All new headliner throughout entire vessel
- All new AV includes smart TV's, Blu-ray players, mini iPad controls with Caribbean satellite receivers
- New engine room exhaust fans
- All 25 A/C blower units renewed or replaced as necessary
- Traulson commercial refrigeration refit
- Engines and generators completely serviced by RPM Diesel (service records available upon request)
- Camera system refit/new cameras installed
- New A/C chilled water soft starts installed
- Black water sewage treatment system rebuilt
- Flybridge reconfiguration / all new furnishings and soft goods
- All new quick release removable chaulks installed on boat deck
- All teak decks reconditioned
- All new super structure and flybridge arch Awlgrip paint by Henderson Marine
- (2) Muir stern windlass renewed
- Muir 8000 windlass and anchor system serviced
- Complete running gear refit includes:** All new engine motor mounts replaced by Datum Machinery Services
- New shaft couplers by Datum
- Optically aligned shafts by Straight Line
- All new shaft bearings
- Balance, blue print & reconditioned props by S&S Propeller Services
- 2 coats Micron 44 bottom paint by Henderson Marine
- Prop speed applied to shafts and props by Henderson Marine
- Stabilizer service by High

Seas Yacht Service •Bow thruster service by High Seas •Renew under water lighting by Henderson Marine •Sea trial w/ Datum Rotating Machinery Services •All mechanical fluid changes by RPM Diesel

---

## Main Salon

---

The spacious salon measures 23' x 21' due to the unique single side deck. It has a modern yet warm feel through the use of golden wheat colored Fabrica carpet and neutral tone sofas to port and starboard. As you enter from the aft deck, a 9' circular green and blue marble inlaid compass rose on the floor is echoed by a recessed ceiling soffit. The aft deck doors slide completely away to allow the outdoors in. Four large deckhouse windows, port and starboard, each measuring 5 1/2' x 3 1/2' enhance the salon's spaciousness. •Samsung world wide video player •Samsung 32 bit DSS receiver •Samsung LED TV •Middle Atlantic Productions EMI, filtered power center •15 zone stereo system •All new mini pad control system installed (2013) •MVision Cine260HB projector TV (new 2012) with 106" motorized screen •Denon surround sound EX •Samsung DVD video player

---

## Dining Salon

---

Forward is the dining room and bar area. The bar, to starboard, has four pull-up stools, granite countertops, refrigerator, icemaker, a two-door wine cooler and glass & bottle storage. The dining table with seating for eight is separated from the salon by an athwartship cabinet with dish storage. Another storage cabinet is forward of the dining table and includes two unique pull out glass storage bins. A second recessed ceiling soffit is above the table.

Just forward of the bar on the starboard side is a soaring entryway. A travertine floor inlaid with a smaller green and blue marble compass rose blends well with the mahogany walls and an 8' high etched glass entry feature. Curved stairwells lead up to the pilothouse and below to the accommodations area. There is a day head on the starboard side foyer.

---

## Galley

---

The spacious country galley has granite countertops, a center island work station, a computer work station, eat in galley settee with seating for 8 and a walk-in pantry.

•SubZero dual refrigerator G90 •SubZero dual refrigerator G50 •(2) Traulsen undercounter freezers •GE Monogram microwave convection oven •Miele dishwasher •KitchenAid trash compactor •Thermador 6burner cook top •(2) Gaggenau undercounter ovens •Broan range master exhaust •Ademco security alarm •HP color laser printer & Sony Ciao computer •Samsung 17" flat screen TV •Samsung DVD/VHS player •Standard VHF GX 2335S Mova •42" plasma screen on fwd bulkhead of galley •Crestron entertainment control panel •Hot water dispenser



---

## Laundry Room

---

•(2) Speed Queen commercial washers •Miele electric rolling iron •(2) Speed Queen commercial dryer

---

## Master Stateroom

---

Down the steps from the main entryway and aft is the master stateroom spanning across the entire 28' beam of the boat. There is a walkaround king size berth with wood headboard, wooden canopy overhead and drawer storage beneath. Large walk-in wardrobes and two dressers provide ample storage. To port is a large settee and to starboard is a vanity. There are twin separate baths, one with a large steam shower and the other with tub/shower. All baths throughout the boat have mahogany base cabinets with bow fronts, marble countertops and beveled mirrors.

•Denon Surround Sound and DVD •Samsung world wide video VHS •Samsung 21" flat screen TV •Sony DSS microprocessor •His and her cedar lined closets •Geochron World Clock •Creston LCD wall mount touch control panel •Creston control monitor 12" smart touch remote •Smoke detector

---

## Guest Stateroom Forward Port

---

Forward of the master stateroom the port stateroom features a queen berth with Frette linens, large dressers, cedar-lined closets and raw silk covered walls. The entertainment system includes a flat panel TV, DVD and VHS player with connections to the ship's audio system. The port bath features burgundy and white marble.

---

## Guest Stateroom Forward Starboard

---

Forward of the master stateroom the starboard stateroom features a queen size berth with Frette linens, large dressers, cedar-lined closets and raw silk covered walls. The entertainment system includes a flat panel TV, DVD and VHS player with connections to the ship's audio system. The starboard bath features white marble.

---

## Guest Stateroom Forward

---

This guest stateroom sits between the master and the matching queen berth staterooms forward. There is a queen size berth, as well as a pullman above and a full entertainment center with TV/VCR/CD/Stereo. The ensuite head with shower features coffee and white marble.

---

## Crew Quarters

---

Crew quarters for up to 6 in 3 staterooms are accessed from the galley. Two have upper and lower berths, each with private head. The captain's cabin is large and has a queen berth, captain's work desk, settee and stacked drawers. Each stateroom has a flat panel TV, DVD, VHS and Crestron panels for stereo.

---

## Companionway

---

The companionway forward has a door used by the crew for daily service of the guest area. Two large linen lockers are located here as well. Near the curved stairwell leading above is a large walk-in butler's pantry. A wall mounted wine storage system for 144 bottles of wine is located here, as is a sub-zero 7 cubic foot refrigerator/freezer. The entire companionway has mahogany wood panels to chair rail height and silk wall coverings above.

---

## Pilothouse

---

The spacious pilothouse includes a leather settee, black granite topped table, captain's navigation work desk, chart flat, forward sonar, mini M Sat, F77 sat phone, new updated gyro, (6) flat screens, (2) Stidd captain's chairs and plenty of storage behind mahogany raised panel doors.

•Furuno FA150 AIS •Northern Lights generator controls •Naiad adaptive stabilizer controls •Bow thruster control •Emergency engine controls •Emergency engine stops •Jog steering wheel •(2) Icom IC604 VHF radios

---

## Electronics and Navigational Equipment

---

•Furuno FR 2115B 12KW/6.5 antenna on VE1 18" daylight display •Furuno Sonar 250 on VE1 18" daylight display •Furuno SSB FS 4769 •Furuno Navtex receiver NX 500 •Furuno MFDSC terminal/receiver DSL6A •Anschutz Pilotstar autopilot MBST 1950 •Northstar 6000I GPS •(6) Icom crew radios w/chargers •(3) VHF standard HX 350S handhelds w/chargers •(2) ACR 600 spotlights w/remotes •Servo Watch/super cam on VE1 18" Super Daylight display •Elbex CCTX EXS 125 w/5 cameras •B&G depth/wind/speed/network data •Panasonic KXT 7230 phone system •KVH Trac phone F77 Sat phone •Sea Tel Sat TV •Crestron 12" smart touch screen controller •Nera Sat phone •Sel Set graphic digital battery monitor •Nobeltech nav system •Exalto windshield wipers •(2) Jastram rudder angle indicators RAI300 •Kahlenburg M511 horn & whistle control •Mac computer •HP Photosmart printer

---

## Fly Bridge Equipment

---

Designed for entertaining and enjoyment, the large bridge features a walk behind, granite top bar with six stools. The refrigerator, icemaker, dishwasher, microwave and bar-b-que grill are located here. Aft of the bar on the centerline is the Jacuzzi with marble surround counter and six fixed stools. Large sun pads flank the hot tub on each side. Starboard to the bar is beautiful lounge seating for 6. A teak table with chairs also provides space for al fresco dining and entertainment including a 50" drop down plasma movie theater. The bridge is covered by a fixed hardtop. There is a centerline helm with helm chair and port and starboard wing stations. Near the wing station are (2) captain chairs outboard to port and starboard.

- 18" SuperSun Monitor •50" drop down plasma movie theater •Creston 12" touch screen remote controller •Anschutz 1954 Pilotstar second station •Jastram R01 rudder indicator •DSS receiver •Icom ICM 504 VHF Radios •VEI LD display •LPG BBQ grill •(2) LPG tanks in approved locker •KitchenAid icemaker •Dishwasher •Microwave •Furuno FR2 115 BB 12 KW +6.5 antenna with keyboard •VHF standard Morison 6x2335S Nova •GPS Northstar 6100 •B&G depth speed •Port/starboard wing station w/ VHF plugs •Teak deck •(2) ACR searchlights •(2) Northern Lights gen. panels with preheat switch and start/stop

## Aft Deck

---

The aft deck is fully enclosed and air conditioned, although if wanted, the transom windows all flip up to allow in the breeze. There is a large table on stainless steel pedestals and eight teak chairs. Three high gloss wood cabinets with granite tops contain an entertainment center, icemaker, refrigerator, microwave and freezer. Steps on the starboard side lead to the large swim platform with a teak table, fishing rod holders port and starboard, sockets and mounts for outriggers, tender whips and access through a watertight door to lazarette and engine room. A passerelle extends from the aft deck on the port side.

- GE microwave •Sub Zero 6 cu refrigerator •Scottsman icemaker •(4) Underwater lights in transom •Creston audio visual control •Sharp LCD flatscreen TV •Samsung V1000 DVD/VHS player •Day head in lazarette (2) SeaDoos GTI.SE

## Deck and Misc. Equipment

---

- Marquipt 4000lb telescope davit •(2) Muir 8000 bow windlass •(2) Muir 4000 stern windlass •Panther NFPA self contained breathing apparatus •Fire protective footwear •Fire Suite Lion Apparel Fire Helmut Legend •Florentino sea anchor •ACR EPIRB 406 •250 gal gas tank on swim platform for tenders •(2) 10 man canister Viking DK life rafts •All rooms have access to Private MP 3 music hard drive systems •All rooms have access to World VCR •All rooms have access to CCTV cameras •All rooms have access to Boat Wide DirecTV •All crew rooms and guest suites have in wall LCD remote control panels •Engine room and lazarette have access to audio system •(2) 480 amp shore power cords on retractable reels •30" life ring with locator beacon, port and starboard

---

## Engine Room

---

•Twin MTU/DDC 16V2000 @1800 HP Engines Port main 2432 hrs/Starboard main 3926 hrs  
•Twin Northern Light 80KW generators (mech. & elec. rebuild May 2011) Generators Port 2464 hrs/Starboard 2247 hrs •Watermaker Inc., 3000 GPD each (June 2011) •Alpha Laval fuel polishing system •(1) McCarron constavolt 75amp battery chargers •(2) Mastervolt battery chargers •Naiad 404 stabilizers w/Sea State 2000 upgrade •American 70HP bow thruster Racor fuel filters for engines & generators •Electrohydraulic steering system w/backup •Twin sea chests w/crossover for engines & generators •CruiseAir 24ton A/C system •Jetpump marine sanitation sytem •Christensen worldwide connectivity electrical system ranging from 208v single phase to 480v 3phase w/auto frequency converter •Ship monitoring systems •Overhead closed circuit TV cameras •(2) 220 volt air compressors with storage tank •(2) lube storage oil tanks •All new batteries (2011/2012)

---

## Bosun's Locker

---

•(2) 85 gallon water heaters •Mastervolt battery charger •(2) 24volt battery banks with four 8D batteries each (new 2012) •Kidde dry chemical fire extinguisher •Sentry dry chemical fire extinguisher •(4) Type II life jackets •Fire pump control switch

---

## Wheelhouse

---

•Dell Computer /weather PC •VEI navigation PC •FE241 cylinder tag Jan. 2012 •Anschutz gyro •Servo watch systems monitor PC •Two transformers •Circuit panels •(7) Crestron audio visual contron units •(2) transformer isolation disconnect switches •Lifetouch lighting control circuit panels •Naiad marine fluxgate compass •KVH satellite TV antenna control •(10) DirecTV receivers •Integra DTR 6.8 audio visual receiver •(3) Middle Atlantic Products Inc., surge protectors •APC power conditioner with battery back up •Smoke alarm

---

## Tenders and Toys

---

•New 2013 Novurania 18' / 115 Yamaha 4 stroke •(1) SeaDoo RSX 2 person

---

## Исключения

---

При продаже яхты исключаются личные вещи владельца.

---

## Отказ от ответственности

---

Компания предоставляет описание судна или яхты добросовестно, но не может

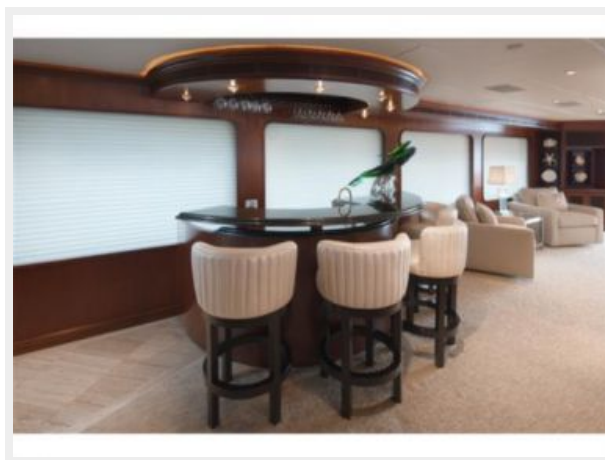
гарантировать точность этой информации, а также не ручается за техническое состояние. Покупатель должен проинструктировать своих агентов или оценщиков исследовать представленную информацию более подробно, по собственному желанию. Продажа судна или яхты, изменение цены или снятие с продажи будет происходить без предварительного уведомления.

# ФОТОГРАФИИ

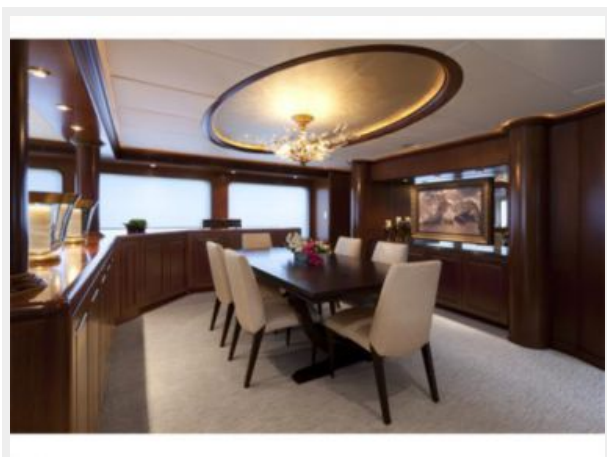
**Main Salon**



**Salon Bar**



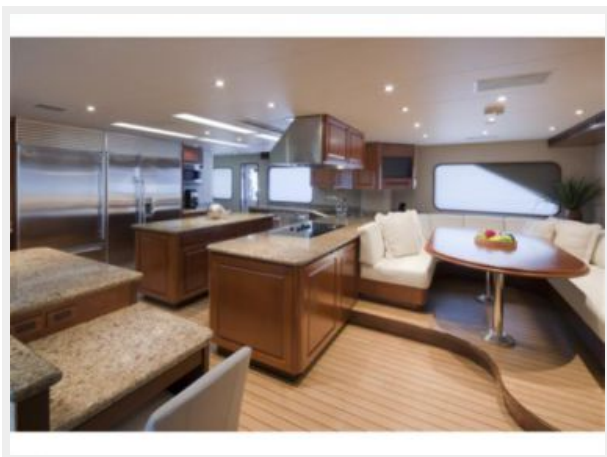
**Salon Dining**



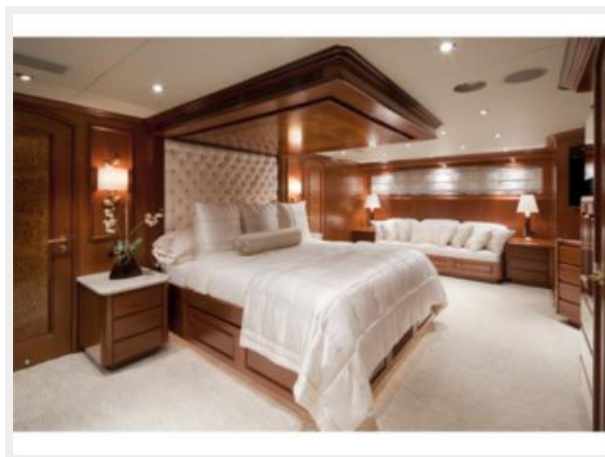
**Galley**



**Galley**



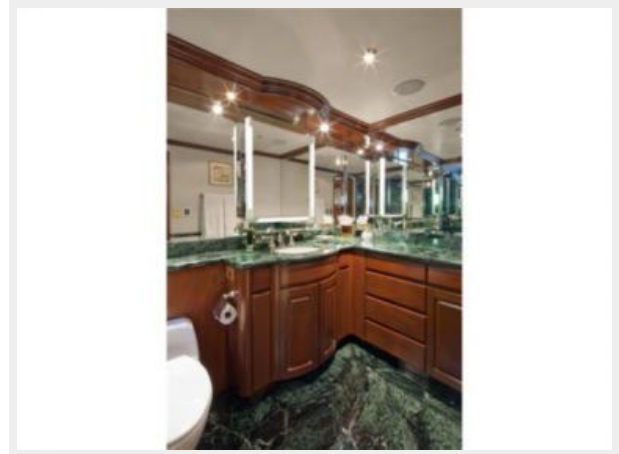
**Master Stateroom**



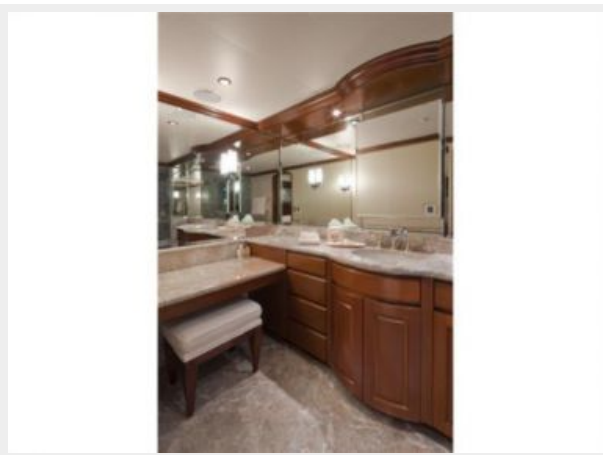
**Master Stateroom**



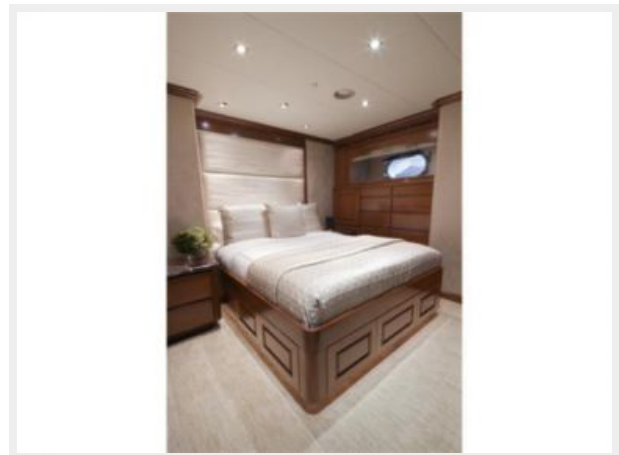
**Master Bath**



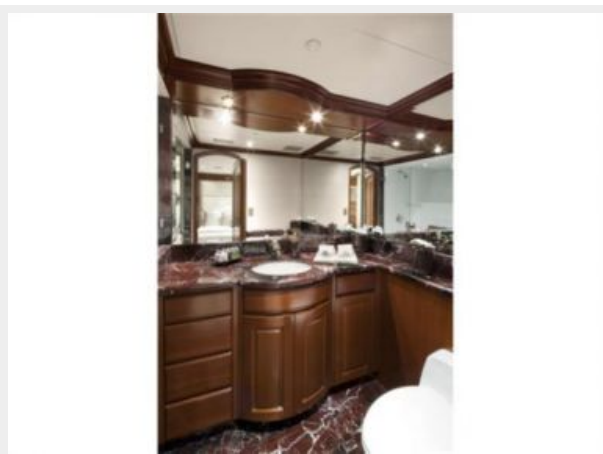
**Master Bath**



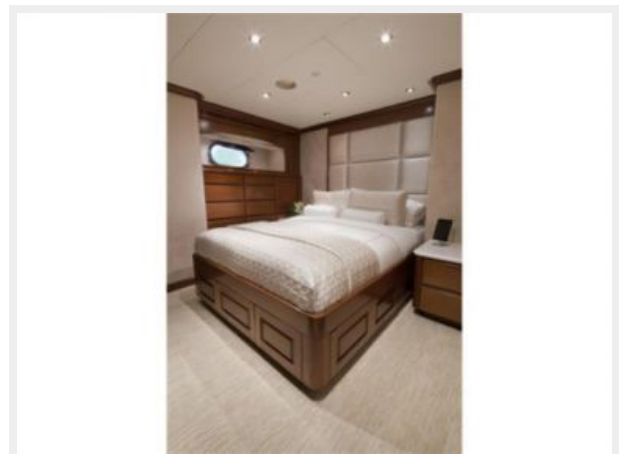
**Guest Stateroom, Forward Port**



**Guest Bath**



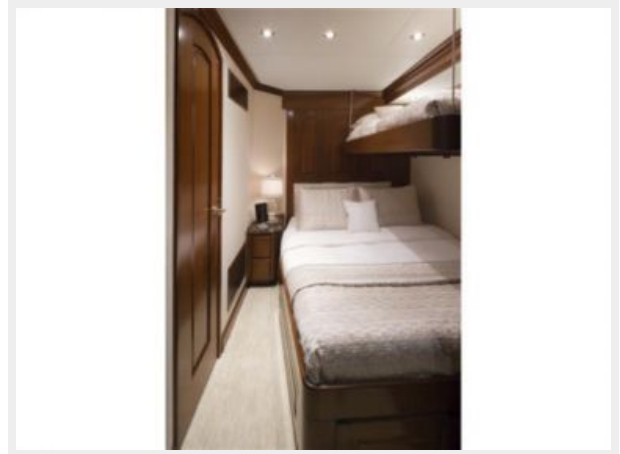
**Guest Stateroom, Forward Starboard**



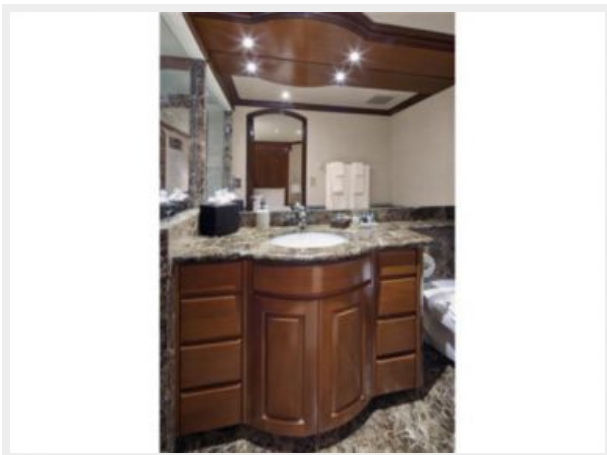
**Guest Bath**



**Guest Stateroom Forward**



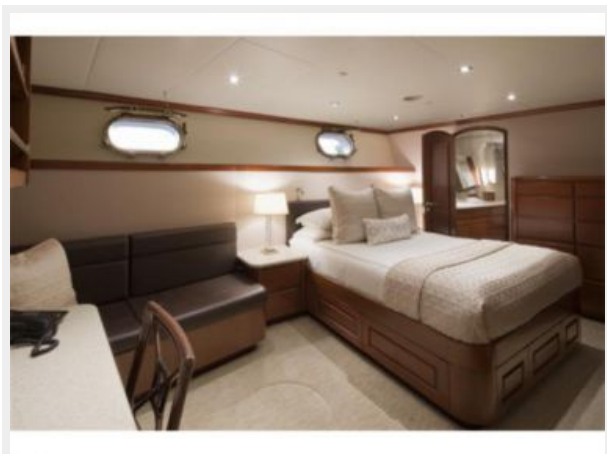
**Guest Bath**



**Crew and Lounge Area**



**Captain's Suite**

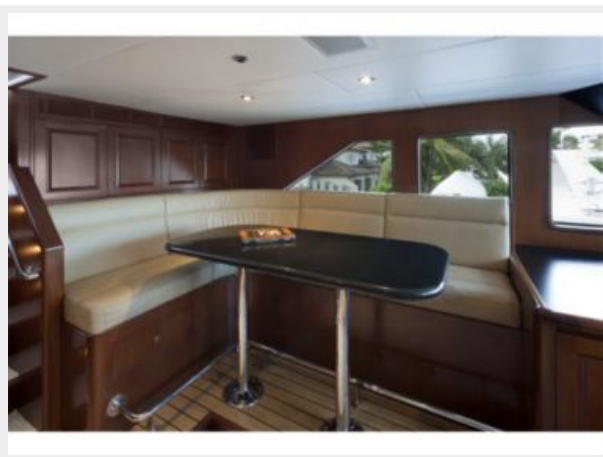


**Wheelhouse**

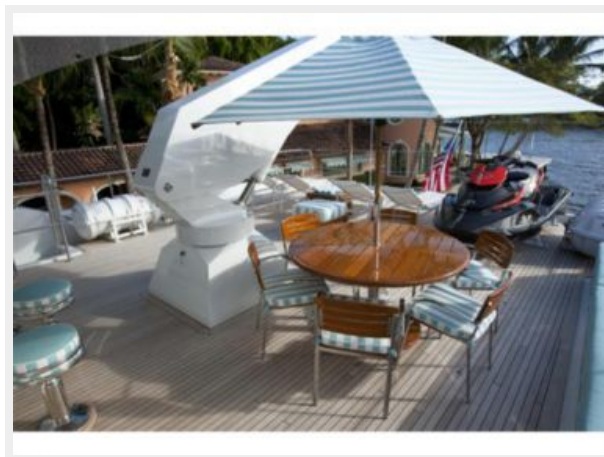




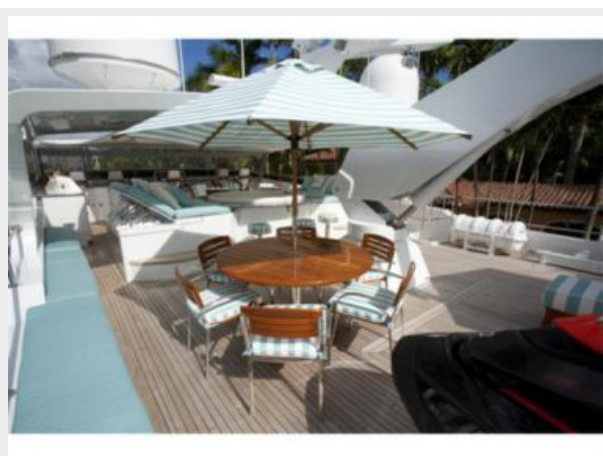
**Pilothouse Seating**



**Flybridge**



**Flybridge Alfresco Dining**



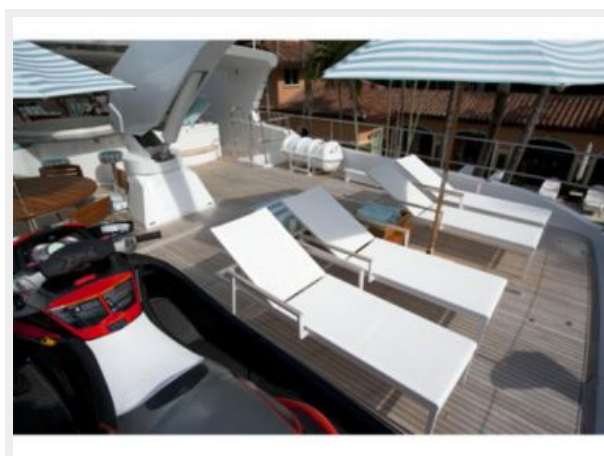
**Flybridge Bar and Lounge Seating**



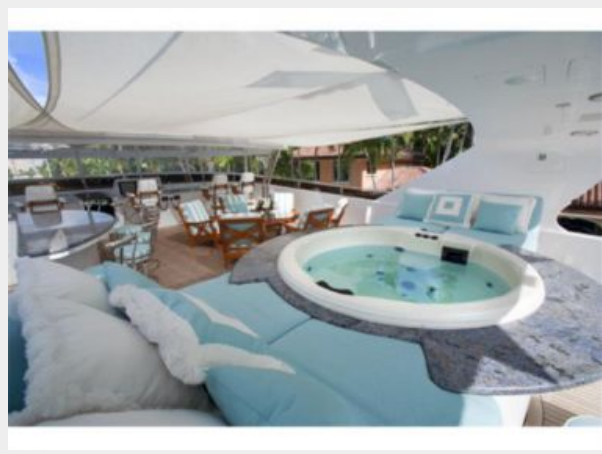
**Flybridge Lounge Seating**



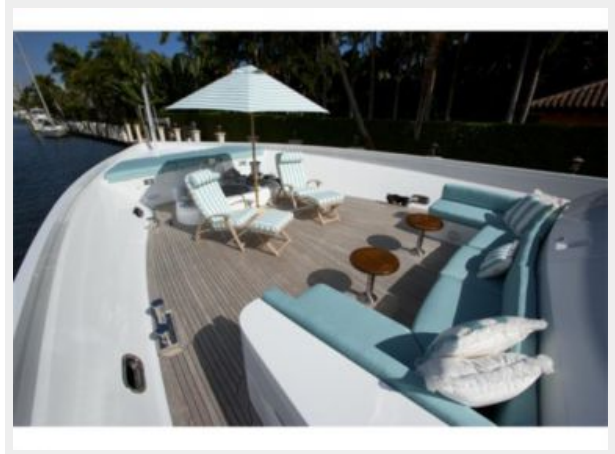
**Flybridge Sun Lounging**



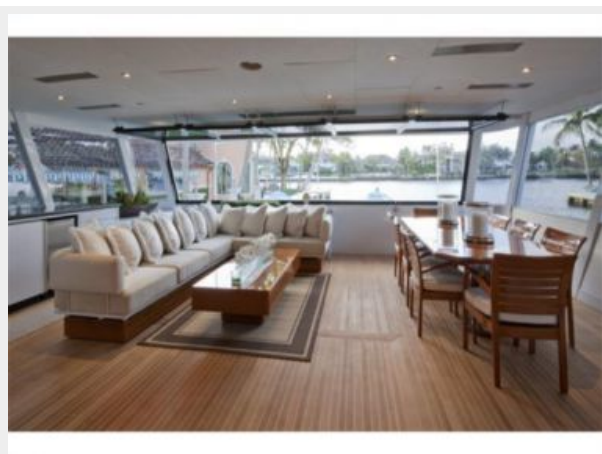
**Flybridge Jacuzzi**



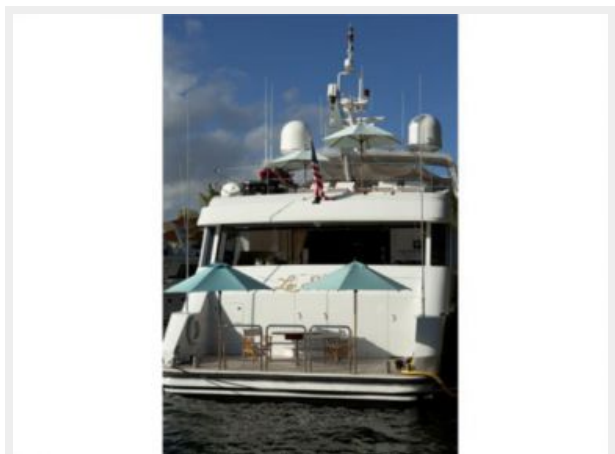
**Bow Seating**



**Aft Deck**



**Aft View//Swim Platform**



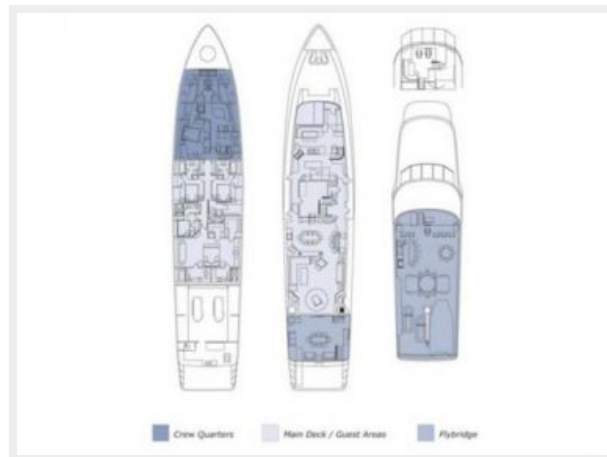
**Engine Room**



**Engine Room**



## Layout



# КОНТАКТЫ

---

Андрей Шестаков (Andrey Shestakov) – ведущий яхтенный брокер отдела продаж яхт и судов компании Shestakov Yacht Sales Inc. Официальный представитель Shestakov Yacht Sales Inc. для русскоговорящих клиентов в центральном офисе компании в Майами/Форт Лодердейл/Флорида/США.

## Контактная информация

---

Email: [andrey@shestakovyachtsales.com](mailto:andrey@shestakovyachtsales.com)

Web: [shestakovyachtsales.com](http://shestakovyachtsales.com)

## Телефоны

---

Краснодарский край: **+7(918)465-66-44**

США, Майами, Флорида: **+1(954)274-4435**

## Время работы

---

Понедельник – Суббота: **9:00 - 21:00**  
EDT

Воскресенье: **Закрето**

## Адрес

---



Harbour Towne Marina, 850 NE 3rd St,  
STE 213, Dania, FL 33004