

WATERFRONT PROPERTY — MORGAN



Builder: MORGAN

Year Built: 1990

Model: Center Cockpit

Price: PRICE ON APPLICATION

Location: United States

LOA: 44' 0" (13.41m)

Beam: 13' 6" (4.11m)

Max Draft: 5' 0" (1.52m)

Our experienced yacht broker, Andrey Shestakov, will help you choose and buy a yacht that best suits your needs **Waterfront Property — MORGAN** from our catalogue. Presently, at **Shestakov Yacht Sales Inc.**, we have a wide variety of yachts available on our sale's list. We also work in close contact with all the big yacht manufacturers from all over the world.

If you would like to buy a yacht **Waterfront Property — MORGAN** or would like help answering any questions concerning purchasing, selling or chartering a yacht, please call **+1(954)274-4435**

TABLE OF CONTENTS

TABLE OF CONTENTS	2
SPECIFICATIONS	5
Overview	5
Basic Information	5
Dimensions	5
Speed, Capacities and Weight	5
Accommodations	5
Hull and Deck Information	6
Engine Information	6
DETAILED INFORMATION	7
Accommodations	7
Sails and Rigging	8
Mechanical	8
Electrical	8
Electronics	9
Galley	9
Deck & Cockpit	10
Upgrades & Extras in 2013	10
Broker's Comments	11
Exclusions	12
Exclusions	12
Disclaimer	12
PHOTOS	13
PROFILE AND ARRANGEMENT	13
LOOKING FORWARD	13
FORWARD STATEROOM	13
CHAIN LOCKER ACCESS	13
FORWARD HEAD	14

SALON FORWARD TV UP	14
SALON FORWARD TV DOWN	14
GALLEY	14
CUSTOM STORAGE UNDER STOVE TOP	14
CUSTOM 4 LEAF TABLE	14
PORT SALON	15
PASSAGEWAY TO AFT	15
MAIN ELECTRIC PANEL	15
SUBPANELS	15
NAV STATION	15
ENGINE ROOM	15
ENGINE ROOM	16
FORWARD IN PASSAGEWAY	16
MASTER STATEROOM	16
MASTER STATEROOM TO STARBOARD	16
CUSTOM CHELVING IN MSR TO PORT	16
MASTER HEAD	16
MASTER TUB/SHOWER	17
TENDER ON DAVITS	17
HELM	17
FOREDECK	17
SOLAR PANELS ON TOP OF BIMINI	17
MAIN FURLER IN MAST	17
BOOM VANG	18
CONTACTS	19
Contact details	19
Telephones	19
Office hours	19
Address	19

SPECIFICATIONS

Overview

This two stateroom center cockpit makes an excellent live aboard and cruising boat. Her current owner is a professional 500 ton ocean master, master of towing, and skilled mechanic. The vessel has been upgraded to top condition, extensively equipped, and well maintained. She has air-conditioning and a generator to run it when away from the dock. The cabinetry has been customized with extra shelving for live aboard storage. Her decks are crack free in excellent condition and her interior shows like almost new. She is all roller furling. This is perhaps the nicest Morgan 44 on the market.

Basic Information

Category: Center Cockpit

Model Year: 1990

Year Built: 1990

Country: United States

Dimensions

LOA: 44' 0" (13.41m)

LWL: 35' 4" (10.77m)

Beam: 13' 6" (4.11m)

Max Draft: 5' 0" (1.52m)

Clearance: 60' 0" (18.29m)

Speed, Capacities and Weight

Displacement: 23500 Pounds

Water Capacity: 215 Gallons

Holding Tank: 15 Gallons

Fuel Capacity: 100 Gallons

Accommodations

Total Cabins: 2

Total Berths: 4

Total Heads: 2

Hull and Deck Information

Hull Material: Fiberglass

Hull Configuration: Fin & Bulb

Engine Information

Engines: 1

Manufacturer: Yanmar

Model: 4JHE

Engine Type: Inboard

Fuel Type: Diesel

DETAILED INFORMATION

Accommodations

Beginning first forward is the anchor rode locker accessed via removable panel.

Next aft is the forward stateroom with a full sized V berth forward that can sleep 2. The cabinetry is rich Teak in good condition as throughout. There is shelving on the stbd. hull side, batten strips on the hull side ceilings, a teak and Holly sole as throughout, drawers, and a hanging locker to port aft. To stbd. aft is a door into the forward head.

Next aft to stbd. is the forward head. The forward head also opens to the salon for use as a day head. The compartment is finished in white Formica with Teak trim and an FRP floor pan. The pan is intended for use with a hand shower but the shower wand is not fitted. There is a manual toilet.

Next aft is the main salon with a bench settee on each side and a custom four drop leaf table nested around the mast. Outboard of the port settee is a storage shelf and there are multiple cabinets outboard of the stbd. settee. The cabinetry and trim are Teak. The sole is Teak and Holly. There is a fold down flat screen TV forward. The port settee bottom slides out to form an additional double bunk.

To stbd. aft open to the salon is the galley. The galley has Formica counter tops and cabinetry with Teak trim. The sole is Teak and Holly. The galley has a double stainless steel sink, top loading reefer/freezer box, stainless steel microwave oven built in, a new 2 burner flush top electric range with built in storage under and a filtered water faucet.

On the center line aft is the ladder up to the cockpit with electric panels on the port side of it. Across to port is the navigation station.

Continuing aft on the port side is a companionway aft to the master stateroom with a large storage area outboard and engine room access inboard under the cockpit. The engine room has excellent access with the generator forward and the main engine aft with space between to stand. In addition to the door from the companionway there are additional access panels for the engine room forward under the companionway ladder in the galley, aft on the forward bulkhead of the master stateroom, and in the master head.

Next aft is the master stateroom with a modified queen island berth aft, storage lockers with counters outboard on both sides, and custom shelving in the lockers on the port side. The master stateroom is finished like the forward stateroom with Teak cabinetry, Formica counters, Teak and Holly sole, and batten stripped hull side ceilings.

To stbd. forward is the master head finished in white Formica with Teak trim. It has tub/shower with seat forward in the compartment and an electric marine toilet.

There are numerous hatches and opening stainless steel ports all fitted with screens for natural ventilation.

The entire interior is in excellent condition and shows very well.

Sails and Rigging

- In 2007 a NEW U.S. ROLLER FURLING MAIN MAST was added with ALL NEW NORSEMAN RIGGING and a NEW MAINSAIL
- 135% Genoa new 2013
- Harken 40-2 ste ELECTRIC HALYARD WINCH, Lewmar 52 cst primaries, Lewmar 40st mainsheet, 2 Lewmar 24R @ mast
- Rigid boom vang
- All sheet winches serviced 2013
- New Genoa sheets and furling lines 2013

Mechanical

- Double the fuel capacity of the standard 44 CC.
- Yanmar 44 HP Diesel engine
- Marine Air 16000 BTU w/ direct expansion split system
- Racor for engine & gen plus in-line algae X fuel conditioner
- (2) 2,000 GPPH Automatic, (2) Manual Bilge Pumps
- Edson steering wheel
- Lectrasan electric system @ aft head
- Guest head is manual w/ Y-valve and macerator
- PSS Dripless shaft seal
- Fuel tank gauges at tanks
- 3-Blade bronze prop
- Dockside water filter
- Water tanks cleaned 2010
- Forced Air cabin heater
- Vernalift engine exhaust
- BC Fire extinguishing system
- CO Fume detector
- Smoke detector

Electrical

- (3) 4D AGM batteries (new 2013), (1) Group 27 AGM engine battery (660 amp hrs.)
- Magnum Energy 3000 watt inverter/charger

- Xantrex battery monitoring system
- Westerbeke 5 KW generator w/ 1401 hrs.
- Generator has remote panel with hour counter, temp, oil pressure & voltage gauges
- Seaward water heater (new 2013)
- Red courtesy night lights
- Glomex TV antenna @ masthead
- 2 x 120 Watt solar panels with regulator (2013)
- 2- 30 amp 50' Marincos dockside cables
- Main electric panel with analog ammeters and voltmeters for AC and DC

Electronics

Pod mounted instruments at helm:

- B&G VHF
- B&G GPS Plus 12
- Garmin GHC 10 Autopilot
- Garmin 740s GPS/Plotter
- Garmin 24 HD Radar
- B&G wind, speed, depth
- Ritchie Globemaster 6" compass

Instruments at Nav Station:

- ICOM 56 VHF
- B&G Network Data
- B&G GPS Plus
- Seaworthy CD/AM/FM stereo w/ salon speakers
- Marine Air controls

24" flat screen TV

KVH Direct TV satellite TV system

Bullet M2 WiFi antenna system

Galley

- Adler Barbour Crosby Cold Plate (110v) Refrigeration
- Refrigerator pump
- 2 burner glass top electric stove
- GE Profile S/S Microwave oven
- Double S/S sink
- (6) lockers, (2) cabinets, (2) drawers

- Seabird water filtration system
- ShurFlo "silencer" water pump
- Dry storage locker
- Coffee maker
- Toaster

Deck & Cockpit

- Ground Tackle: New Rocna 44# anchor with 100' chain & 350' of rode, 45# CQR w/ 35' chain 350' rode
- SL Anchorman 1200 electric windlass (rebuilt 2013)
- Three sided cockpit enclosure with Strataglass windshield
- Bimini & Dodger with S/S frame
- Custom bimini fabric for sun UV controls
- Helm cover
- Covers for all hatches
- Cockpit cushions
- Cockpit table
- Large aft lazarette
- Two cockpit lockers
- Two flag halyards
- Aft deck cooler
- New West Marine Hypalon RBI (2013)
- OB Motor lift
- S/S Deck rails
- S/S portlights w/ screens
- Fresh water washdown aft
- No-strike lightning protection
- Foredeck light
- Lifesling system
- (4) Life jackets
- Port & starboard lifeline gates
- Teak toe rails stripped and refinished 2/14

Upgrades & Extras in 2013

New 135% Genoa sail

New Genoa sheets & furling lines

One of the two, 2000 GPH bilge pumps replaced with new unit

Both Bilge Pump float switches new

New Kato Davits

New 10'3" West Marine Inflatable Hypalon 310 RIB Tender

New 44 lb Rocna anchor & 100' chain

New SeaSafe 4 man self-righting life raft

2 new 120 Watt Solar panels W/ regulator

3 each New 4D AGM House Batteries

New Garmin 740s plotter

New Garmin 24 HD radar

New Garmin GHC 10 autopilot

New 24" Flat Screen TV, folds flat on overhead when stored.

New KVH Direct TV Dish system

Inside lights replaced with LED's

New 15 gallon holding tank bladder for forward head (2013)

Several forward head discharge hoses replaced

New 2 Burner Glass top electric stove

New in cabinet storage shelves in Guest & Master Staterooms

New cabinet for storage in galley under new stove

12 volt swivel fans installed throughout

New built in tool box

And much, much more

Lots of spare parts for backup when cruising

Broker's Comments

The current owner purchased this yacht in 2012 for cruising and live aboard. He is a USCG 500 ton ocean master and a master of towing with extensive experience in the marine and yachting industry. He has captained tugs, cruise ships, yachts and other vessels. As a couple the two of them have run and delivered yachts. He went through every system to check and upgrade as necessary before departing to cruise. Additional shelving was installed to facilitate live aboard

storage. Electronics were upgraded. Sails and rigging were upgraded and checked. The tender and davits were added.. All machinery was serviced. Extensive parts were loaded. The drop leaf table was modified to have 4 leaves instead of 2 for convenience in movement. Plans have changed after a year of cruising and its time for a new crew to benefit from the excellent condition of this vessel. Everything has been professionally maintained. I doubt you will find a nicer 44.

Exclusions

- Barometer
- Chef knives
- Personal tools
- Charts and plotting tools
- Snorkel equipment
- Personal items
- Personal EPIRB

Exclusions

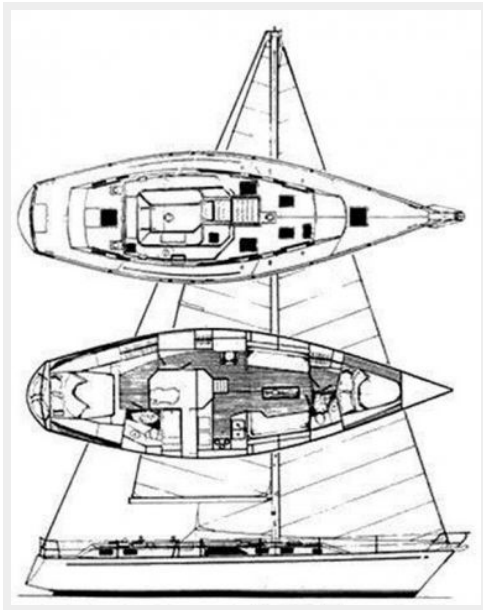
Owner's personal belongings.

Disclaimer

The Company offers the details of this vessel or yacht in good faith but cannot guarantee or warrant the accuracy of this information nor warrant the condition of the vessel. A buyer should instruct his representatives, agents, or his surveyors, to investigate such details as the buyer desires validated. This vessel or yacht is offered subject to prior sale, price change, or withdrawal without notice.

PHOTOS

PROFILE AND ARRANGEMENT



LOOKING FORWARD



FORWARD STATEROOM



CHAIN LOCKER ACCESS



FORWARD HEAD



SALON FORWARD TV UP



SALON FORWARD TV DOWN



GALLEY



CUSTOM STORAGE UNDER STOVE TOP



CUSTOM 4 LEAF TABLE



PORT SALON



PASSAGEWAY TO AFT



MAIN ELECTRIC PANEL



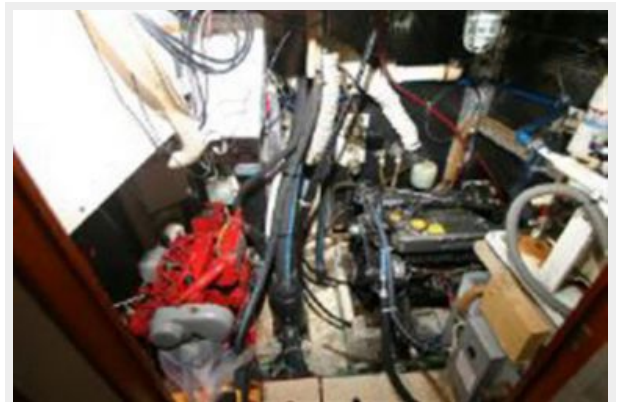
SUBPANELS



NAV STATION



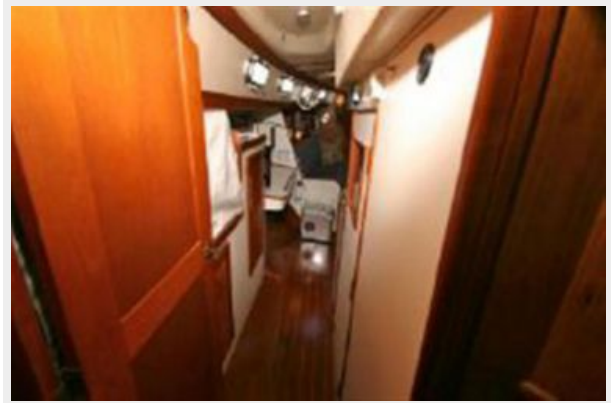
ENGINE ROOM



ENGINE ROOM



FORWARD IN PASSAGEWAY



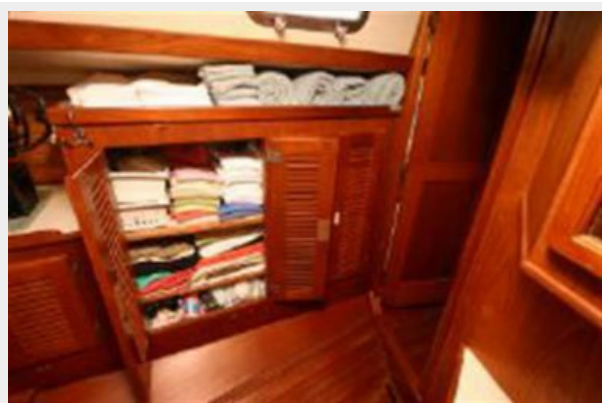
MASTER STATEROOM



MASTER STATEROOM TO STARBOARD



CUSTOM CHELVING IN MSR TO PORT



MASTER HEAD



MASTER TUB/SHOWER



TENDER ON DAVITS



HELM



FOREDECK



SOLAR PANELS ON TOP OF BIMINI



MAIN FURLER IN MAST



BOOM VANG



CONTACTS

Andrey Shestakov, leading yacht broker of the sales department of Shestakov Yacht Sales Inc. Shestakov Yacht Sales Inc., the official representative of the Miami/Fort Lauderdale FL headquarters.

Contact details

Email: andrey@shestakovyachtsales.com

Web: shestakovyachtsales.com/en/

Telephones

USA: +1(954)274-4435

Office hours

Monday – Saturday: **9:00 - 21:00** EDT

Sunday: **closed**

Address



Harbour Towne Marina, 850 NE 3rd St,
STE 213, Dania, FL 33004