

WATERFRONT PROPERTY — MORGAN



Судостроитель: MORGAN

Год постройки: 1990

Модель: Center Cockpit

Цена: ЦЕНА ЯХТЫ ПО ЗАПРОСУ

Местонахождение: United States

Длина общая: 44' 0" (13.41m)

Ширина: 13' 6" (4.11m)

Макс. осадка: 5' 0" (1.52m)

Купить **Waterfront Property — MORGAN** а также выбрать подходящую вам яхту из нашего каталога яхт вам поможет опытный яхтенный брокер Андрей Шестаков. На сегодняшний день компания **Shestakov Yacht Sales Inc.** имеет большое количество яхт в собственном списке продаж, а также тесно сотрудничает со всеми крупными яхтенными производителями по всему миру.

Для того чтобы купить яхту **Waterfront Property — MORGAN** а также проконсультироваться по любому вопросу связанному с покупкой, продажей, чартером яхт позвоните по телефону **+7(918)465-66-44**.

ОГЛАВЛЕНИЕ

ОГЛАВЛЕНИЕ	2
ХАРАКТЕРИСТИКИ	5
Обзор	5
Основная информация	5
Размеры	5
Скорость, вместимость и масса	5
Размещение	5
Корпус и палуба	6
Информация о двигателе	6
ПОДРОБНОЕ ОПИСАНИЕ	7
Accommodations	7
Sails and Rigging	8
Mechanical	8
Electrical	8
Electronics	9
Galley	9
Deck & Cockpit	10
Upgrades & Extras in 2013	10
Broker's Comments	11
Exclusions	12
Исключения	12
Отказ от ответственности	12
ФОТОГРАФИИ	13
PROFILE AND ARRANGEMENT	13
LOOKING FORWARD	13
FORWARD STATEROOM	13
CHAIN LOCKER ACCESS	13
FORWARD HEAD	14

SALON FORWARD TV UP	14
SALON FORWARD TV DOWN	14
GALLEY	14
CUSTOM STORAGE UNDER STOVE TOP	14
CUSTOM 4 LEAF TABLE	14
PORT SALON	15
PASSAGEWAY TO AFT	15
MAIN ELECTRIC PANEL	15
SUBPANELS	15
NAV STATION	15
ENGINE ROOM	15
ENGINE ROOM	16
FORWARD IN PASSAGEWAY	16
MASTER STATEROOM	16
MASTER STATEROOM TO STARBOARD	16
CUSTOM CHELVING IN MSR TO PORT	16
MASTER HEAD	16
MASTER TUB/SHOWER	17
TENDER ON DAVITS	17
HELM	17
FOREDECK	17
SOLAR PANELS ON TOP OF BIMINI	17
MAIN FURLER IN MAST	17
BOOM VANG	18
КОНТАКТЫ	19
Контактная информация	19
Телефоны	19
Время работы	19
Адрес	19

ХАРАКТЕРИСТИКИ

Обзор

This two stateroom center cockpit makes an excellent live aboard and cruising boat. Her current owner is a professional 500 ton ocean master, master of towing, and skilled mechanic. The vessel has been upgraded to top condition, extensively equipped, and well maintained. She has air-conditioning and a generator to run it when away from the dock. The cabinetry has been customized with extra shelving for live aboard storage. Her decks are crack free in excellent condition and her interior shows like almost new. She is all roller furling. This is perhaps the nicest Morgan 44 on the market.

Основная информация

Тип судна: Center Cockpit

Модельный год: 1990

Год постройки: 1990

Страна: United States

Размеры

Длина общая: 44' 0" (13.41m)

Длина по ватерлинии: 35' 4" (10.77m)

Ширина: 13' 6" (4.11m)

Макс. осадка: 5' 0" (1.52m)

Трапы: 60' 0" (18.29m)

Скорость, вместимость и масса

Водоизмещение: 23500 Pounds

Вместимость воды: 215 Gallons

Вместимость сточного бака: 15 Gallons

Объем топливного бака: 100 Gallons

Размещение

Всего кают: 2

Всего коек: 4

Всего ком. состава: 2

Корпус и палуба

Материал корпуса: Fiberglass

Комплектация корпуса: Fin & Bulb

Информация о двигателе

Двигатели: 1

Производитель: Yanmar

Модель: 4JHE

Тип двигателя: Inboard

Тип топлива: Diesel

ПОДРОБНОЕ ОПИСАНИЕ

Accommodations

Beginning first forward is the anchor rode locker accessed via removable panel.

Next aft is the forward stateroom with a full sized V berth forward that can sleep 2. The cabinetry is rich Teak in good condition as throughout. There is shelving on the stbd. hull side, batten strips on the hull side ceilings, a teak and Holly sole as throughout, drawers, and a hanging locker to port aft. To stbd. aft is a door into the forward head.

Next aft to stbd. is the forward head. The forward head also opens to the salon for use as a day head. The compartment is finished in white Formica with Teak trim and an FRP floor pan. The pan is intended for use with a hand shower but the shower wand is not fitted. There is a manual toilet.

Next aft is the main salon with a bench settee on each side and a custom four drop leaf table nested around the mast. Outboard of the port settee is a storage shelf and there are multiple cabinets outboard of the stbd. settee. The cabinetry and trim are Teak. The sole is Teak and Holly. There is a fold down flat screen TV forward. The port settee bottom slides out to form an additional double bunk.

To stbd. aft open to the salon is the galley. The galley has Formica counter tops and cabinetry with Teak trim. The sole is Teak and Holly. The galley has a double stainless steel sink, top loading reefer/freezer box, stainless steel microwave oven built in, a new 2 burner flush top electric range with built in storage under and a filtered water faucet.

On the center line aft is the ladder up to the cockpit with electric panels on the port side of it. Across to port is the navigation station.

Continuing aft on the port side is a companionway aft to the master stateroom with a large storage area outboard and engine room access inboard under the cockpit. The engine room has excellent access with the generator forward and the main engine aft with space between to stand. In addition to the door from the companionway there are additional access panels for the engine room forward under the companionway ladder in the galley, aft on the forward bulkhead of the master stateroom, and in the master head.

Next aft is the master stateroom with a modified queen island berth aft, storage lockers with counters outboard on both sides, and custom shelving in the lockers on the port side. The master stateroom is finished like the forward stateroom with Teak cabinetry, Formica counters, Teak and Holly sole, and batten stripped hull side ceilings.

To stbd. forward is the master head finished in white Formica with Teak trim. It has tub/shower with seat forward in the compartment and an electric marine toilet.

There are numerous hatches and opening stainless steel ports all fitted with screens for natural ventilation.

The entire interior is in excellent condition and shows very well.

Sails and Rigging

- In 2007 a NEW U.S. ROLLER FURLING MAIN MAST was added with ALL NEW NORSEMAN RIGGING and a NEW MAINSAIL
- 135% Genoa new 2013
- Harken 40-2 ste ELECTRIC HALYARD WINCH, Lewmar 52 cst primaries, Lewmar 40st mainsheet, 2 Lewmar 24R @ mast
- Rigid boom vang
- All sheet winches serviced 2013
- New Genoa sheets and furling lines 2013

Mechanical

- Double the fuel capacity of the standard 44 CC.
- Yanmar 44 HP Diesel engine
- Marine Air 16000 BTU w/ direct expansion split system
- Racor for engine & gen plus in-line algae X fuel conditioner
- (2) 2,000 GPPH Automatic, (2) Manual Bilge Pumps
- Edson steering wheel
- Lectrasan electric system @ aft head
- Guest head is manual w/ Y-valve and macerator
- PSS Dripless shaft seal
- Fuel tank gauges at tanks
- 3-Blade bronze prop
- Dockside water filter
- Water tanks cleaned 2010
- Forced Air cabin heater
- Vernalift engine exhaust
- BC Fire extinguishing system
- CO Fume detector
- Smoke detector

Electrical

- (3) 4D AGM batteries (new 2013), (1) Group 27 AGM engine battery (660 amp hrs.)
- Magnum Energy 3000 watt inverter/charger

- Xantrex battery monitoring system
- Westerbeke 5 KW generator w/ 1401 hrs.
- Generator has remote panel with hour counter, temp, oil pressure & voltage gauges
- Seaward water heater (new 2013)
- Red courtesy night lights
- Glomex TV antenna @ masthead
- 2 x 120 Watt solar panels with regulator (2013)
- 2- 30 amp 50' Marincos dockside cables
- Main electric panel with analog ammeters and voltmeters for AC and DC

Electronics

Pod mounted instruments at helm:

- B&G VHF
- B&G GPS Plus 12
- Garmin GHC 10 Autopilot
- Garmin 740s GPS/Plotter
- Garmin 24 HD Radar
- B&G wind, speed, depth
- Ritchie Globemaster 6" compass

Instruments at Nav Station:

- ICOM 56 VHF
- B&G Network Data
- B&G GPS Plus
- Seaworthy CD/AM/FM stereo w/ salon speakers
- Marine Air controls

24" flat screen TV

KVH Direct TV satellite TV system

Bullet M2 WiFi antenna system

Galley

- Adler Barbour Crosby Cold Plate (110v) Refrigeration
- Refrigerator pump
- 2 burner glass top electric stove
- GE Profile S/S Microwave oven
- Double S/S sink
- (6) lockers, (2) cabinets, (2) drawers

- Seabird water filtration system
- ShurFlo "silencer" water pump
- Dry storage locker
- Coffee maker
- Toaster

Deck & Cockpit

- Ground Tackle: New Rocna 44# anchor with 100' chain & 350' of rode, 45# CQR w/ 35' chain 350' rode
- SL Anchorman 1200 electric windlass (rebuilt 2013)
- Three sided cockpit enclosure with Strataglass windshield
- Bimini & Dodger with S/S frame
- Custom bimini fabric for sun UV controls
- Helm cover
- Covers for all hatches
- Cockpit cushions
- Cockpit table
- Large aft lazarette
- Two cockpit lockers
- Two flag halyards
- Aft deck cooler
- New West Marine Hypalon RBI (2013)
- OB Motor lift
- S/S Deck rails
- S/S portlights w/ screens
- Fresh water washdown aft
- No-strike lightning protection
- Foredeck light
- Lifesling system
- (4) Life jackets
- Port & starboard lifeline gates
- Teak toe rails stripped and refinished 2/14

Upgrades & Extras in 2013

New 135% Genoa sail

New Genoa sheets & furling lines

One of the two, 2000 GPH bilge pumps replaced with new unit

Both Bilge Pump float switches new

New Kato Davits

New 10'3" West Marine Inflatable Hypalon 310 RIB Tender

New 44 lb Rocna anchor & 100' chain

New SeaSafe 4 man self-righting life raft

2 new 120 Watt Solar panels W/ regulator

3 each New 4D AGM House Batteries

New Garmin 740s plotter

New Garmin 24 HD radar

New Garmin GHC 10 autopilot

New 24" Flat Screen TV, folds flat on overhead when stored.

New KVH Direct TV Dish system

Inside lights replaced with LED's

New 15 gallon holding tank bladder for forward head (2013)

Several forward head discharge hoses replaced

New 2 Burner Glass top electric stove

New in cabinet storage shelves in Guest & Master Staterooms

New cabinet for storage in galley under new stove

12 volt swivel fans installed throughout

New built in tool box

And much, much more

Lots of spare parts for backup when cruising

Broker's Comments

The current owner purchased this yacht in 2012 for cruising and live aboard. He is a USCG 500 ton ocean master and a master of towing with extensive experience in the marine and yachting industry. He has captained tugs, cruise ships, yachts and other vessels. As a couple the two of them have run and delivered yachts. He went through every system to check and upgrade as necessary before departing to cruise. Additional shelving was installed to facilitate live aboard

storage. Electronics were upgraded. Sails and rigging were upgraded and checked. The tender and davits were added.. All machinery was serviced. Extensive parts were loaded. The drop leaf table was modified to have 4 leaves instead of 2 for convenience in movement. Plans have changed after a year of cruising and its time for a new crew to benefit from the excellent condition of this vessel. Everything has been professionally maintained. I doubt you will find a nicer 44.

Exclusions

- Barometer
- Chef knives
- Personal tools
- Charts and plotting tools
- Snorkel equipment
- Personal items
- Personal EPIRB

Исключения

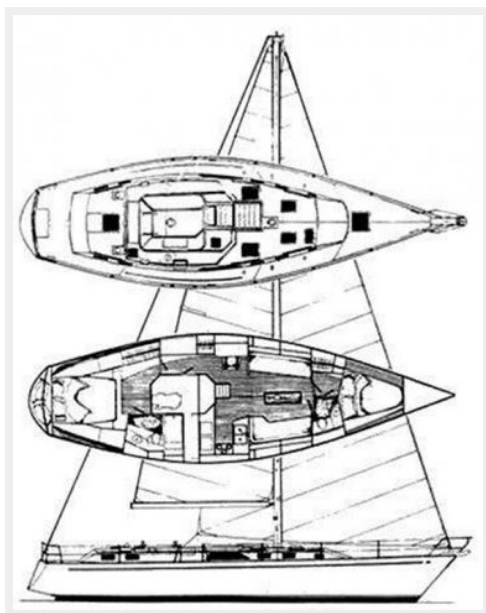
При продаже яхты исключаются личные вещи владельца.

Отказ от ответственности

Компания предоставляет описание судна или яхты добросовестно, но не может гарантировать точность этой информации, а также не ручается за техническое состояние. Покупатель должен проинструктировать своих агентов или оценщиков исследовать представленную информацию более подробно, по собственному желанию. Продажа судна или яхты, изменение цены или снятие с продажи будет происходить без предварительного уведомления.

ФОТОГРАФИИ

PROFILE AND ARRANGEMENT



LOOKING FORWARD



FORWARD STATEROOM



CHAIN LOCKER ACCESS



FORWARD HEAD



SALON FORWARD TV UP



SALON FORWARD TV DOWN



GALLEY



CUSTOM STORAGE UNDER STOVE TOP



CUSTOM 4 LEAF TABLE



PORT SALON



PASSAGEWAY TO AFT



MAIN ELECTRIC PANEL



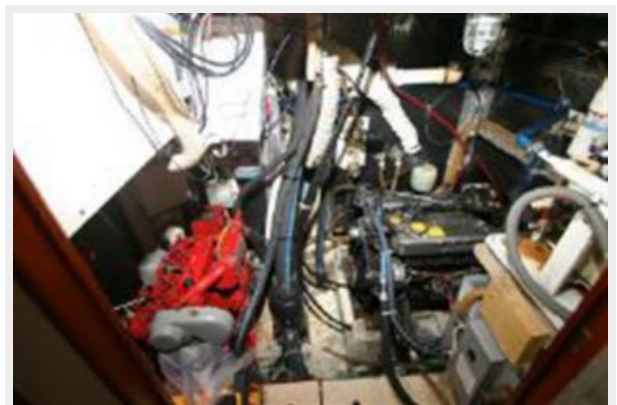
SUBPANELS



NAV STATION



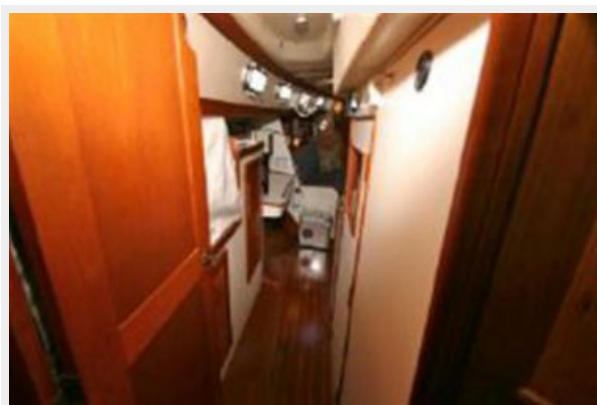
ENGINE ROOM



ENGINE ROOM



FORWARD IN PASSAGEWAY



MASTER STATEROOM



MASTER STATEROOM TO STARBOARD



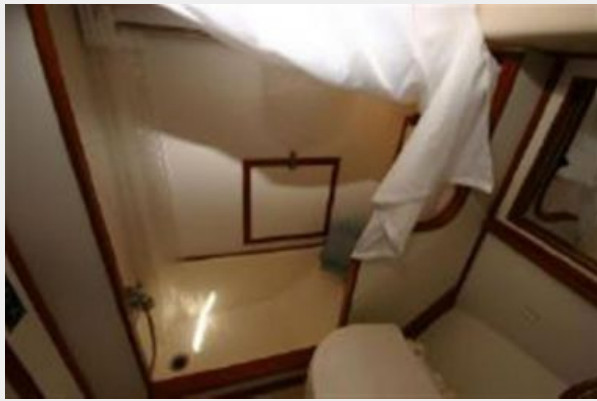
CUSTOM CHELVING IN MSR TO PORT



MASTER HEAD



MASTER TUB/SHOWER



TENDER ON DAVITS



HELM



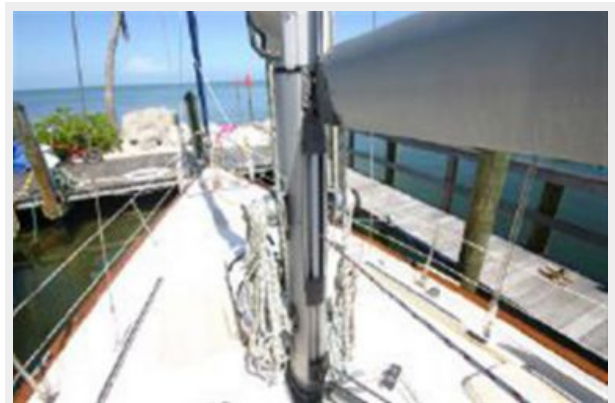
FOREDECK



SOLAR PANELS ON TOP OF BIMINI



MAIN FURLER IN MAST



BOOM VANG



КОНТАКТЫ

Андрей Шестаков (Andrey Shestakov) – ведущий яхтенный брокер отдела продаж яхт и судов компании Shestakov Yacht Sales Inc. Официальный представитель Shestakov Yacht Sales Inc. для русскоговорящих клиентов в центральном офисе компании в Майами/Форт Лодердейл/Флорида/США.

Контактная информация

Email: andrey@shestakovyachtsales.com

Web: shestakovyachtsales.com

Телефоны

Краснодарский край: **+7(918)465-66-44**

США, Майами, Флорида: **+1(954)274-4435**

Время работы

Понедельник – Суббота: **9:00 - 21:00**
EDT

Воскресенье: **Закрито**

Адрес



Harbour Towne Marina, 850 NE 3rd St,
STE 213, Dania, FL 33004