

NO NAME — LIBERTY YACHTS



Builder: LIBERTY YACHTS

Year Built: 1980

Model: Cruising Sailboat

Price: PRICE ON APPLICATION

Location: United States

LOA: 28' 0" (8.53m)

Beam: 8' 9" (2.67m)

Min Draft: 3' 3" (0.99m)

Max Draft: 6' 3" (1.91m)

Our experienced yacht broker, Andrey Shestakov, will help you choose and buy a yacht that best suits your needs **No Name — LIBERTY YACHTS** from our catalogue. Presently, at Shestakov Yacht Sales Inc., we have a wide variety of yachts available on our sale's list. We also work in close contact with all the big yacht manufacturers from all over the world.

If you would like to buy a yacht **No Name — LIBERTY YACHTS** or would like help answering any questions concerning purchasing, selling or chartering a yacht, please call **+1(954)274-4435**

TABLE OF CONTENTS

TABLE OF CONTENTS	2
SPECIFICATIONS	3
Overview	3
Basic Information	4
Dimensions	4
Speed, Capacities and Weight	4
Accommodations	4
Hull and Deck Information	4
Engine Information	5
PHOTOS	6
CONTACTS	9
Contact details	9
Telephones	9
Office hours	9
Address	9

SPECIFICATIONS

Overview

If you are in the market for a great pocket cruiser, look no further. This diesel powered Liberty 28' centerboard sloop with tiller steering and mahogany interior is looking for a new home.

The boat has fresh bottom pant, all the safety equipment is new, a gas "rail mount" grill and carry on A/C unit are included. The chartplotter comes with chips of the West Coast of Florida, the east coast of the US and the Bahamas. **Specs** Builder: Liberty Yachts Designer: Cyrus Hamlin Flag of Registry: United States Keel: Centerboard Hull Shape: Displacement **Dimensions** LOA: 28 ft 0 in Beam: 8 ft 9 in LWL: 21 ft 3 in Minimum Draft: 3 ft 3 in Maximum Draft: 6 ft 3 in Displacement: 8400 lbs Ballast: 2740 lbs Bridge Clearance: 36 ft 0 in **Engines** Engine 1: Engine Brand: Yanmar Year Built: 1980 Engine Model: 2QM15 Engine Type: Inboard Engine/Fuel Type: Diesel Propeller: 2 blade propeller Drive Type: Direct Drive Engine(s) Total Power: 14 HP **Tanks** Fresh Water Tanks: 1 Plastic (30 Gallons) Fuel Tanks: 2 Aluminum (11 Gallons) **Accommodations** Number of single berths: 2 Number of double berths: 1 Number of cabins: 2 Number of heads: 1 **Electronics** Log-speedometer Radar - Raytheon Depthsounder Compass Autopilot - Tiller pilot Radio Wind speed and direction Plotter - Standard GPS Chart 150 (Florida, East Coast and Bahamas) VHF Navigation center **Sails** Genoa Battened mainsail Spinnaker **Rigging** Tiller **Inside Equipment** Manual bilge pump Air conditioning - Portable unit Electric bilge pump Chemical head Battery charger **Electrical Equipment** Shore power inlet **Outside Equipment/Extras** Swimming ladder Outboard engine brackets Cockpit cushions **Covers** Spray hood Mainsail cover

Accommodations

Below deck the Pied Piper 28 feels spacious for her size with her clever arrangement and accommodations. From the spacious V-berth that easily accommodates 2 adults moving aft to starboard is a large hanging locker, to port is a head area, currently being used as a sail locker complete with portable toilet. Continuing along the starboard side moving aft is the nav station with a cavernous ice box below. Opposite is the galley with a stainless steel sink, cutting board cover and a one burner stove on a gimbal. Moving aft is a centerline table with pedestal mounted centerboard winch, both sides have quarter births extending under the cockpit that double as opposing settees with fold up tables and back rest.

Additional Information

The boat has fresh bottom pant, all the safety equipment is new, a gas "rail mount" grill and carry on A/C unit are included. The chartplotter comes with chips of the west coast of Florida, the east coast of the US and the Bahamas.

Basic Information

Category: Cruising Sailboat

Model Year: 1980

Year Built: 1980

Country: United States

Cockpit: Yes

Dimensions

LOA: 28' 0" (8.53m)

LWL: 21' 3" (6.48m)

Beam: 8' 9" (2.67m)

Min Draft: 3' 3" (0.99m)

Max Draft: 6' 3" (1.91m)

Clearance: 36' 0" (10.97m)

Speed, Capacities and Weight

Displacement: 8400 Pounds

Water Capacity: 30 Gallons

Fuel Capacity: 11 Gallons

Accommodations

Total Cabins: 2

Hull and Deck Information

Hull Material: Fiberglass

Engine Information

Engines: 1

Manufacturer: Yanmar

Model: 2QM15

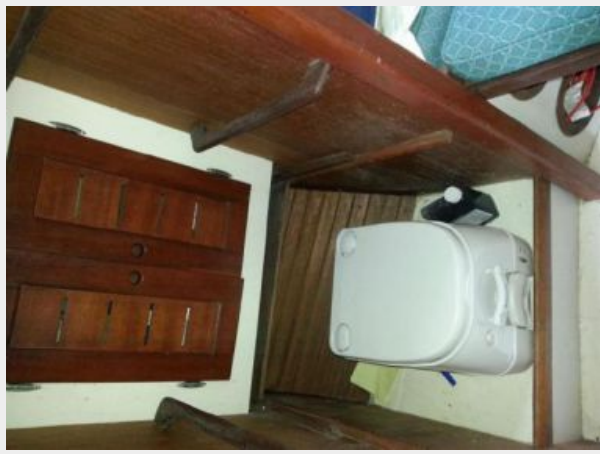
Engine Type: Inboard

Fuel Type: Diesel

PHOTOS







CONTACTS

Andrey Shestakov, leading yacht broker of the sales department of Shestakov Yacht Sales Inc. Shestakov Yacht Sales Inc., the official representative of the Miami/Fort Lauderdale FL headquarters.

Contact details

Email: andrey@shestakovyachtsales.com

Web: shestakovyachtsales.com/en/

Telephones

USA: +1(954)274-4435

Office hours

Monday – Saturday: **9:00 - 21:00** EDT

Sunday: **closed**

Address



Harbour Towne Marina, 850 NE 3rd St,
STE 213, Dania, FL 33004