

## 42' 1988 JERSEY 42 CONVERTIBLE — JERSEY



**Builder:** JERSEY

**Year Built:** 1988

**Model:** Sport Fisherman

**Price:** PRICE ON APPLICATION

**Location:** United States

**LOA:** 42' 0" (12.80m)

**Beam:** 15' 8" (4.78m)

**Max Draft:** 3' 8" (1.12m)

Our experienced yacht broker, Andrey Shestakov, will help you choose and buy a yacht that best suits your needs 42' 1988 Jersey 42 Convertible — JERSEY from our catalogue. Presently, at Shestakov Yacht Sales Inc., we have a wide variety of yachts available on our sale's list. We also work in close contact with all the big yacht manufacturers from all over the world.

If you would like to buy a yacht 42' 1988 Jersey 42 Convertible — JERSEY or would like help answering any questions concerning purchasing, selling or chartering a yacht, please call +1(954)274-4435

# TABLE OF CONTENTS

TABLE OF CONTENTS	2
SPECIFICATIONS	5
Overview	5
Basic Information	5
Dimensions	6
Speed, Capacities and Weight	6
Accommodations	6
Hull and Deck Information	6
Engine Information	6
DETAILED INFORMATION	7
Manufacturer Description	7
Accommodations	7
Deck and Hull	8
Fishing Equipment	8
Electrical	8
Engine & Mechanical	8
Electronics & Navigation Equipment	9
Exclusions	9
Disclaimer	9
PHOTOS	10
Bow Profile	10
Starboard Bow	10
Salon Entry	10
Underway	10
Lower Controls to Starboard	11
Large Open Salon Forward	11
Salon Forward	11
L-Shaped Sofa to Port	11

Starboard Salon	11
Port Salon Looking Aft	11
Starboard Salon Looking Aft	12
Dinette Down to Port	12
Dinette Wide Open to Salon and Galley	12
Spacious Galley Down	12
Galley	13
Galley Looking Down from Salon	13
Full Size Galley Refrigerator	13
Galley	13
Convertible Dinette Seats 4	14
Starboard Stateroom Locker Storage	14
Queen Island Master	14
Starboard Side Stateroom	14
1 of 2 Hanging Locker in Stateroom	15
Stateroom Portside Hanging Locker	15
Forward Stateroom Private Head	15
Stateroom Head Hanging Locker	15
Guest/Day Head with Stall Shower	16
Guest/Day Head Shower	16
Port Engine Looking Forward	16
Starboard Engine Looking Aft	16
Port Engine Aft	16
Starboard Engine Aft	16
Engine Room	17
Engine Room	17
Universal Genset	17
Aft Engine Room	17
Flybridge Electronics	17

---

Flybridge Electronics/Overhead	17
Helm	18
Starboard Helm	18
Helm and Companion Seat	18
Port Side Bridge Bench Seat	18
Port Hourmeter	18
Huge Foredeck	18
Port Forward Cockpit	19
Portside Sink/Tackle Center	19
Starboard Aft Hull Profile	19
Port Transom Profile	19
READY FOR NEW OWNERS !!	19
Port Profile Underway	19
CONTACTS	20
Contact details	20
Telephones	20
Office hours	20
Address	20

---

# SPECIFICATIONS

---

## Overview

---

**NICE BOAT WITH A BIG LAYOUT AND RIDE REDUCED \$ 5,000 10/1/2014 !!!**

With her flowing lines, high bow flare and graceful profile, the 42 Jersey "Dawn" Convertible was a handsome boat when she was introduced in 1988 to replace Jersey Yacht's 40 Convertible which had been in production and a very popular model since the early 1980's, And the 42 remains a distinctive rugged and handsome design even by today's high glitz convertible standards. She rides on a low-deadrise, Solid fiberglass hull with a relatively deep keel and her flat aft section make the 42 quick out of the hole. The 42 Jersey puts her generous 15' 8" Beam to Very Good Use to make for a very spacious, open and bright interior. The boat features a large salon, dinette down to port and galley down opposite to starboard. Forward of the dinette is the Guest/Day Head. The master stateroom is large and features a walkaround island queen berth, hanging lockers and a private MSR head with Vanity, Electric head and Hanging locker. Interior is classic rich teak joinerwork beautifully used by many of New Jersey rich history of quality boat builders.

### **BROKER REMARKS:**

The 42 Jersey was known as one of the finest riding New Jersey built hulls every built combining the right combination of weight, modified vee sold fiberglass hull design, relatively flat at the transom and substantial keel and a High flared bow to give her a great , dry ride in all sea conditions and a VERY stable platform at anchor or while trolling offshore. Her almost full length wide reverse chine gave her lift and stability and made her a quick and relatively economic to run boat.

This boat is in good condition for her age, has been well maintained by her current 2nd owner who bought her from the original owner up north on Chesapeake Bay.

The boat is here at HARBORTOWN MARINA to be SOLD and can easily viewed by appointment.

---

## Basic Information

---

**Category:** Sport Fisherman

**Sub Category:** Convertible

**Model Year:** 1988

**Year Built:** 1988

**Country:** United States

---

## Dimensions

---

**LOA:** 42' 0" (12.80m)

**LWL:** 42' 4" (12.90m)

**Beam:** 15' 8" (4.78m)

**Max Draft:** 3' 8" (1.12m)

**Clearance:** 17' 0" (5.18m)

---

## Speed, Capacities and Weight

---

**Displacement:** 30500 Pounds

**Water Capacity:** 100 Gallons

**Holding Tank:** 40 Gallons

**Fuel Capacity:** 400 Gallons

---

## Accommodations

---

**Total Cabins:** 1

**Total Heads:** 2

---

## Hull and Deck Information

---

**Hull Material:** Fiberglass

**Hull Configuration:** Deep Vee

**Hull Finish:** Plastic

---

## Engine Information

---

**Engines:** 2

**Manufacturer:** Detroit Diesel

**Model:** 671TIB

**Engine Type:** Inboard

**Fuel Type:** Diesel

---

# DETAILED INFORMATION

---

## Manufacturer Description

---

### Description of Jersey Yachts as a Manufacturer

**JERSEY YACHTS** was a long time and well respected builder of quality semi-custom Convertibles in the 36-50' range built with 'hand-laid' fiberglass hulls built for comfort of ride and comfort back at the dock and incorporated traditional handcrafted teak cabin joinery. As a semi-custom builder, the buyer was offered choices of cabin layout, furnishings, and the company's interior designer worked with every new owner one on one with interior appointments and treatments.

The Yacht designer's (Fred McCarthy) proprietary "Turbolift Hull" allows for easy pushing and a fast, stable ride. These boats utilized an advanced fiberglass technology for the times that reduced weight while providing superior strength. This makes possible the use of power systems that deliver both fuel economy and performance.

Jersey Yachts, was a very low volume production builder who, at their height, probably built 18-25 boats per year. Like many other high end boat builders, Jersey ceased production in the early 1990's as a result of a downturn /recession in the U.S. economy.

---

## Accommodations

---

### Vessel Walkthrough:

This was Jersey's Plan A layout with a large salon and Galley and dinette down with 2 Heads.

As you enter the salon the initial impression is the size of the interior due to her wide 15' 8" Beam and wide wrap around side and aft windows. To port is an L-shaped Sofa and an entertainment system is built in forward to starboard with TV, Stereo, Icemaker. There is space to starboard for an occasional chair. To port forward of the sofa is a table area overlooking the Convertible Dinette which is down 3 steps to port with storage lockers above outboard. To port is the galley with newer Full size Whirlpool refrigerator, Stove, Microwave Oven, Large Stainless steel sink a generous storage and High Gloss Teak/Holly parquet sole. Again, large Side/Aft windows allow Plenty of natural light into those areas as well as into the entire Salon/Galley area. Forward of the galley to port is the Day head with companionway access. The Head features a large stall shower, vanity, Vacu flush head and good storage. The mater stateroom is in the bow and again, due to the beam of this boat, is very large in area with a Walkaround Island Queen and it's own Private ensuite head. There is drawer storage under and overhead storage outboard to port and starboard as well as 2 hanging locker' and storage compartments. The Interior colors are neutral and bright accented throughout by a High Gloss, Varnish teak

interior and carpeting, woodwork, headliners, cushions are in very good overall condition and will require only the addition of the New Owner's personal tastes, touches and decorations.

**REMARKS: With her Wide 15'9" Beam "LOTS A BOXES" is one of the Roomiest 42'ers every produced. MAKE A POINT TO SEE HER BEFORE YOU BUY ANY CONVERTIBLE IN THE UNDER \$100K PRICE RANGE !!**

---

## Deck and Hull

---

- **Factory Fiberglass Hardtop with Enclosure,Overhead Hatch, Spreader Lights**
- **6 Person Cannister Liferaft Mounted on Foredeck**
- **2 Foredeck Storage boxes Port and Starboard**
- **Non skid decks and Foredeck**
- **Automatic Remote Anchor Windlass**
- **Anchor Line and chain**
- **Stainless steel Bow and Safety Rails**
- **Fenders**
- **Docklines**
- **Life Preservers**

---

## Fishing Equipment

---

- **Rupp Double Spreader Outriggers**
- **144 Square Foot Cockpit**
- **Cockpit Tackle Center forward to port with sink/storage**
- **Cockpit storage cabinet to starboard with Lower Controls (Throttles/Clutches)**
- **12 Rod Holders Gunnel mounted and Bridge Mounted**

---

## Electrical

---

- **110 Volt Shorepower**
- **12 Volt Ship Power**
- **Dual 30 Amp Shorepower with Cables**
- **5 Batteries**
- **Battery charger**
- **CATV inlet**
- **8 KW Universal Generator with 1857 hours use**

---

## Engine & Mechanical

---



- **Twin Detroit 671 TIB/485HP Diesel Engines Clean and Well Maintained AND ENGINES WERE MAJOR OVERHAULED 2200 hours ago and have much less time on them than the 3781 TOTAL BOAT HOURS shown on Meter**
- **Glendenning Engine Synchronizer**
- **Fresh water cooling Engines and Generator**
- **Sea water Strainers on Engines, Generator and Air conditioning**
- **Engines and machinery and engine room Clean,Neat,Orderly**
- **2 Zone Reverse Cycle Air Conditioning/Heat**
- **Hot water Heater**

---

## **Electronics & Navigation Equipment**

---

- **Garmin 5212 Radar/GPS ChartPlotter ( 3 Years Old )**
- **Garmin 22010C GPSmap Chart Plotter**
- **Simrad/Robertson Auto Pilot AP 11**
- **Furuno FCV 58 LL Fish finder**
- **Garmin Fishfinder Model 340C**
- **2 VHF Radios ( Garmin and Standard Horizon )**
- **Hailer Intercom**
- **TV**
- **VCR**
- **Stereo Entertainment Center**
- **EPIRB**

---

## **Exclusions**

---

Owner's personal belongings.

---

## **Disclaimer**

---

The Company offers the details of this vessel or yacht in good faith but cannot guarantee or warrant the accuracy of this information nor warrant the condition of the vessel. A buyer should instruct his representatives, agents, or his surveyors, to investigate such details as the buyer desires validated. This vessel or yacht is offered subject to prior sale, price change, or withdrawal without notice.

# PHOTOS

**Bow Profile**



**Starboard Bow**



**Salon Entry**



**Underway**



**Lower Controls to Starboard**



**Large Open Salon Forward**



**Salon Forward**



**L-Shaped Sofa to Port**



**Starboard Salon**



**Port Salon Looking Aft**



**Starboard Salon Looking Aft**



**Dinette Down to Port**



**Dinette Wide Open to Salon and Galley**



**Spacious Galley Down**



### Galley

#### Galley Looking Down from Salon



#### Full Size Galley Refrigerator

### Galley



### Convertible Dinette Seats 4



### Starboard Stateroom Locker Storage



### Queen Island Master



### Starboard Side Stateroom



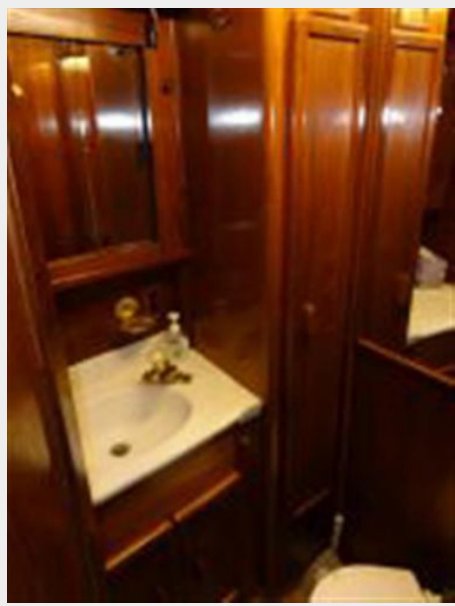
**1 of 2 Hanging Locker in Stateroom**



**Stateroom Portside Hanging Locker**



**Forward Stateroom Private Head**



**Stateroom Head Hanging Locker**



**Guest/Day Head with Stall Shower**



**Guest/Day Head Shower**



**Port Engine Looking Forward**



**Starboard Engine Looking Aft**



**Port Engine Aft**

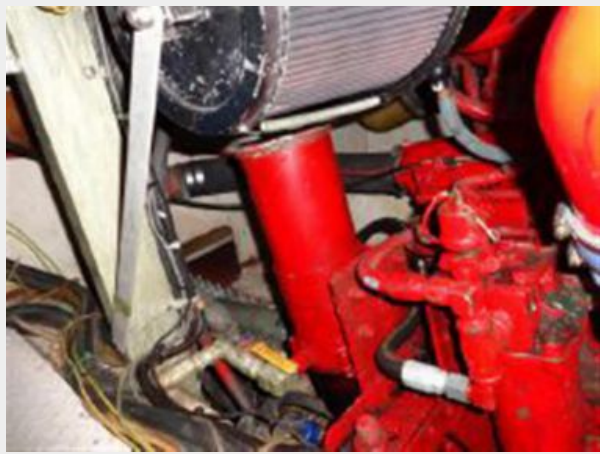


**Starboard Engine Aft**





**Engine Room**



**Engine Room**



**Universal Genset**



**Aft Engine Room**



**Flybridge Electronics**



**Flybridge Electronics/Overhead**



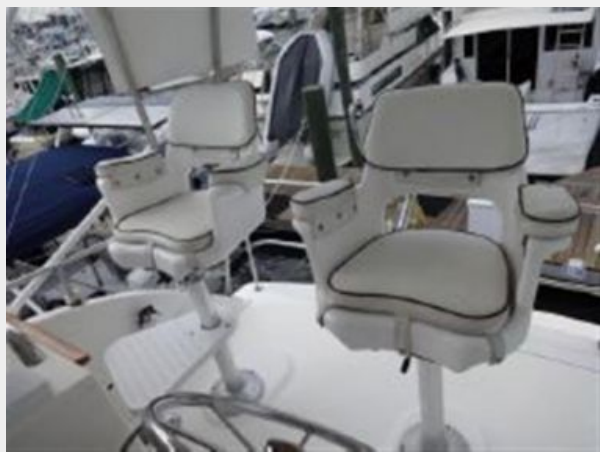
**Helm**



**Starboard Helm**



**Helm and Companion Seat**



**Port Side Bridge Bench Seat**



**Port Hourmeter**



**Huge Foredeck**



**Port Forward Cockpit**



**Portside Sink/Tackle Center**



**Starboard Aft Hull Profile**



**Port Transom Profile**



**READY FOR NEW OWNERS !!**



**Port Profile Underway**



# CONTACTS

---

Andrey Shestakov, leading yacht broker of the sales department of Shestakov Yacht Sales Inc. Shestakov Yacht Sales Inc., the official representative of the Miami/Fort Lauderdale FL headquarters.

## Contact details

---

Email: [andrey@shestakovyachtsales.com](mailto:andrey@shestakovyachtsales.com)

Web: [shestakovyachtsales.com/en/](http://shestakovyachtsales.com/en/)

## Telephones

---

USA: +1(954)274-4435

## Office hours

---

Monday – Saturday: **9:00 - 21:00** EDT

Sunday: **closed**

## Address

---



Harbour Towne Marina, 850 NE 3rd St,  
STE 213, Dania, FL 33004