

ACQUA BELLA — SEA RAY



Builder: SEA RAY

Year Built: 2005

Model: Cruiser

Price: PRICE ON APPLICATION

Location: United States

LOA: 34' 0" (10.36m)

Beam: 12' 0" (3.66m)

Min Draft: 2' 3" (0.69m)

Max Draft: 3' 1" (0.94m)

Our experienced yacht broker, Andrey Shestakov, will help you choose and buy a yacht that best suits your needs **Acqua Bella — SEA RAY** from our catalogue. Presently, at Shestakov Yacht Sales Inc., we have a wide variety of yachts available on our sale's list. We also work in close contact with all the big yacht manufacturers from all over the world.

If you would like to buy a yacht **Acqua Bella — SEA RAY** or would like help answering any questions concerning purchasing, selling or chartering a yacht, please call **+1(954)274-4435**

TABLE OF CONTENTS

TABLE OF CONTENTS	2
SPECIFICATIONS	3
Basic Information	3
Dimensions	3
Speed, Capacities and Weight	3
Accommodations	3
Hull and Deck Information	3
Engine Information	4
DETAILED INFORMATION	5
Manufacturer Provided Description	5
KEY FEATURES	5
AIR CONDITIONING/HEATING	6
CABIN FEATURES	6
COCKPIT FEATURES	6
CONTROL STATION	7
ELECTRICAL SYSTEMS	7
GALLEY	8
HULL & DECK FEATURES	8
Exclusions	9
Disclaimer	9
PHOTOS	10
Manufacturer Provided Image	16
CONTACTS	17
Contact details	17
Telephones	17
Office hours	17
Address	17

SPECIFICATIONS

Basic Information

Category: Cruiser

Model Year: 2005

Year Built: 2005

Country: United States

Dimensions

LOA: 34' 0" (10.36m)

Beam: 12' 0" (3.66m)

Min Draft: 2' 3" (0.69m)

Max Draft: 3' 1" (0.94m)

MFG Length: 34' 0" (10.36m)

Speed, Capacities and Weight

Displacement: 14600 Pounds

Water Capacity: 45 Gallons

Holding Tank: 28 Gallons

Fuel Capacity: 225 Gallons

Accommodations

Total Berths: 6

Total Heads: 1

Hull and Deck Information

Hull Material: Fiberglass

Engine Information

Engines: 2

Manufacturer: Mercruiser

Model: 8.1 Horizons

Engine Type: Inboard

Fuel Type: Gas/Petrol

DETAILED INFORMATION

Manufacturer Provided Description

In the 340 Sundancer, high performance, comfort and quality are beautifully combined in one sleek cruising package. Powered by twin upgraded 8.1 S Horizon MerCruiser V-drives, the 340 Sundancer is the ticket that will let you discover a whole new world of boating. A roomy, redesigned cockpit offers plenty of opportunity to relax, and her sleeping accommodations for six mean family and friends can go right along with you.

KEY FEATURES

- Sleek, racy profile.
- Large integral / extended swim platform with heavy-duty stainless steel swim ladder.
- Standard SmartCraft® Diagnostics with optional upgrades.
- Optional colored hull (blue or green), bottom paint (required).
- Bonded-in circular skylights.
- Standard 15" flatscreen TV with remote DVD player.
- Optional mid-cabin flip-down LCD TV with remote DVD player and wireless headphones.
- Standard satellite-ready sound system.
- Optional premium cockpit sound system with upgraded component speakers, amplifiers, subwoofer, and transom stereo remote.
- Optional 23" flatscreen TV in salon.
- Optional grill.
- Optional sportsman package.
- Optional teak galley floor.
- Optional teak cockpit and swim platform.
- Optional underwater swim platform lighting.
- Optional premium cabin sound system - AM/FM/CD/DVD player (separate from cockpit), upgraded speakers, amplifiers, subwoofer, and TV surround sound.
- Unique cockpit seating layout with dual bucket helm seats with flip-up bolsters, portside bucket seat with flip-up bolster, and u-shaped aft seating with enormous storage bases .
- Enormous electrically actuated engine hatch for easy access to the engine room - lifts entire aft seating area.
- Large cockpit wet bar with standard icemaker or optional refrigerator.
- Voluminous cockpit storage.
- Plenty of room at the helm for electronics.
- Wide open, spacious cabin with abundant storage throughout.
- V-berth gunwale cabinets.
- Large salon gunwale cabinets.
- Enormous single-level galley countertop and abundant storage above and below.
- Large mirrors throughout the cabin.

- Island-style V-berth bunk.
- Weatherproof switch pads and breaker panels with Electronic Interface Modules (EIM).
- Water manifold system.
- Choice of stern drive or inboard propulsion.
- Dual shift and throttle controls (standard on stern drives and V-Drives).
- Meets Applicable USCG, NMMA and ABYC (the highest "building code") Standards.
- Mercury® iQ certified.Sea Ray Owners Club™ Membership.

X

AIR CONDITIONING/HEATING

- Custom Integral Vent System
- Revers Cycle System

CABIN FEATURES

- Carbon Monoxide Monitor
- Carpet
- Carpet Runners
- Lighting, 12V
- Outlet, 12V Accessory
- Outlet, Phone
- Outlets, 120V GFI Protected
- Pillows, Accent
- Stereo, 12V AM/FM Single CD
- Storage, In-Floor
- TV, 15" Flatscreen LCD

- Wood Interior Package

COCKPIT FEATURES

- Beverage Holders (9)
- Carpet Liner
- Door, Cabin Entry
- Door, Transom
- Floor Liner, Fiberglass
- Hatch, Engine Room
- Ice Chest, Insulated

- Ice maker, 120V
- Lighting, Indirect
- Outlet, 120V GFI Protected
- Outlet, 12V Accessory
- Seating, Bucket
- Seating, Bucket (2)
- Seating, U-Shaped
- Sport Spoiler
- Steps
- Storage, Side Panels
- Table, Cockpit
- Wet Bar

CONTROL STATION

- Alarms
- Alarms, High-Water
- Compass
- Emergency Start System
- Horn
- Instrument Panel
- Shift & Throttle Controls
- SmartCraft Diagnostics
- Steering Wheel
- Steering, Hydraulic
- Steering, Power-Assisted
- Steering, Tilt Wheel
- Switch Pads
- Tilt & Trim, Power

ELECTRICAL SYSTEMS

- Battery Charger/Converter
- Battery Solenoid Switches
- Battery Trays
- Breaker Panels, Waterproof
- Isolators, Galvanic (2)
- Mercathode II
- Panel, DC Main Breaker
- Panel, Main Distribution - AC
- Panel, Main Distribution - DC
- Shore Power

- TV/Phone Inlet
- Wiring, Color-Coded

GALLEY

Countertop, Molded Fiberglass

- Handrail
- Lighting, 120V/12V
- Microwave, 120V
- Microwave/Coffee Maker Combo
- Power Vent, 12V
- Refrigerator, 120V/12V
- Storage, Drawers
- Storage, Upper & Lower
- Stove, 120V
- Trash Receptacle

HULL & DECK FEATURES

- Bottom Paint
- Bow & Stern Eyes
- Bow Rail
- Cleats, 10"
- Color Schemes
- Deck Fill Plates
- Drain Plug
- Gel Coat
- Graphics, Striping
- Handrails
- Hatch, Deck Vent
- Light, Stern
- Lights, Navigation
- Portlights, (4 Opening)
- Resin
- Rub Rail, PVC
- Skylights, (2)
- Storage, Transom Wall
- Swim Platform, Integral/Extended
- Thru-Hull Fittings
- Toe Rail, Molded Fiberglass
- Vent System, Engine Compartment

- Windshield
- Windshield Wipers

Exclusions

Owner's personal belongings.

Disclaimer

The Company offers the details of this vessel or yacht in good faith but cannot guarantee or warrant the accuracy of this information nor warrant the condition of the vessel. A buyer should instruct his representatives, agents, or his surveyors, to investigate such details as the buyer desires validated. This vessel or yacht is offered subject to prior sale, price change, or withdrawal without notice.

PHOTOS

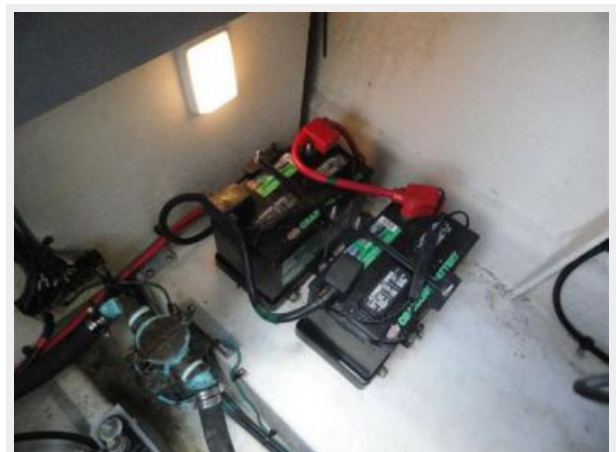
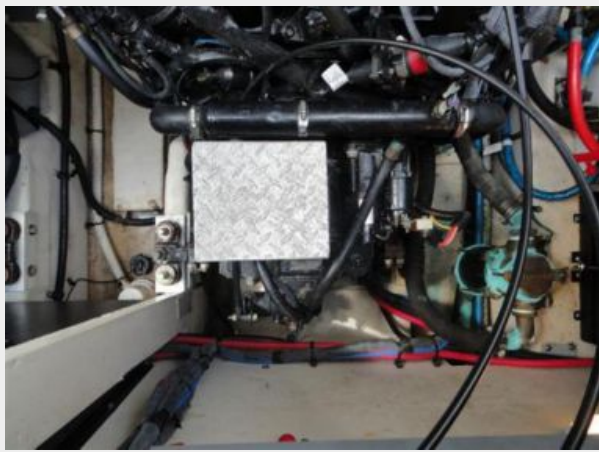






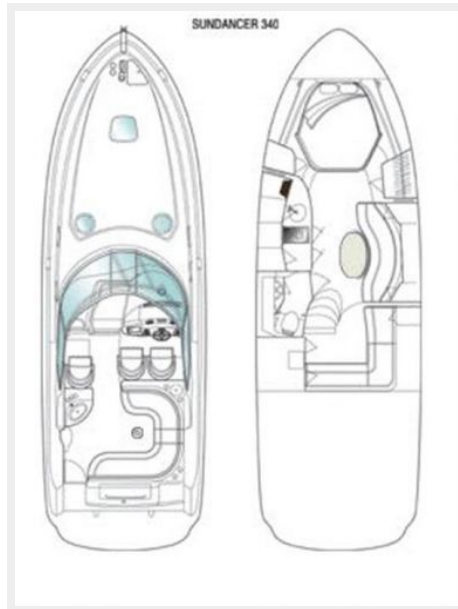








Manufacturer Provided Image



CONTACTS

Andrey Shestakov, leading yacht broker of the sales department of Shestakov Yacht Sales Inc. Shestakov Yacht Sales Inc., the official representative of the Miami/Fort Lauderdale FL headquarters.

Contact details

Email: andrey@shestakovyachtsales.com

Web: shestakovyachtsales.com/en/

Telephones

USA: +1(954)274-4435

Office hours

Monday – Saturday: **9:00 - 21:00** EDT

Sunday: **closed**

Address



Harbour Towne Marina, 850 NE 3rd St,
STE 213, Dania, FL 33004