

MALCOLM TENNANT CATAMARAN — MALCOM TENNANT MULTIHULL DESIGN



Builder:

MALCOM TENNANT MULTIHULL DESIGN

Year Built: 2005

Model: Catamaran

Price: PRICE ON APPLICATION

Location: United States

LOA: 46' 0" (14.02m)

Beam: 24' 8" (7.52m)

Max Draft: 3' 0" (0.91m)

Our experienced yacht broker, Andrey Shestakov, will help you choose and buy a yacht that best suits your needs **Malcolm Tennant Catamaran — MALCOM TENNANT MULTIHULL DESIGN** from our catalogue. Presently, at **Shestakov Yacht Sales Inc.**, we have a wide variety of yachts available on our sale's list. We also work in close contact with all the big yacht manufacturers from all over the world.

If you would like to buy a yacht **Malcolm Tennant Catamaran — MALCOM TENNANT MULTIHULL DESIGN** or would like help answering any questions concerning purchasing, selling or chartering a yacht, please call **+1(954)274-4435**

TABLE OF CONTENTS

TABLE OF CONTENTS	2
SPECIFICATIONS	5
Basic Information	5
Dimensions	5
Speed, Capacities and Weight	5
Hull and Deck Information	5
Engine Information	5
DETAILED INFORMATION	6
Dimensions	6
Engines	6
Tanks	6
Accommodations	6
Master Cabin - Port side	6
Two Guest Cabins Strbd Side	7
Vessel Walk Through	7
Galley	8
Dining	8
Electronics & Entertainment	8
Electrical	9
Mechanical	9
Hull & Deck	9
Sails and Rigging	10
Designer's Comments	11
Exclusions	11
Disclaimer	11
PHOTOS	12
Aft View	12
Salon - Galley-1	12

Salon - Dinette	12
Salon - Galley-2	12
Owner's cabin-1	13
Salon - Nav Station - Refrigerators	13
Owner's cabin-2	13
Owner's Suite entrance	13
Owner's suite - storage	14
Owner's head w/bath tub	14
Aft Guest cabin-1	14
Entrance to Guest cabins - Library	14
Aft Guest cabin-2	15
Forward Guest cabin	15
Forward guest cabin-2	15
Guest head	15
Cockpit	15
Helm-1	15
Helm-2	16
Cabin top - winches	16
Storage - cockpit	16
Side deck - cabin top	16
Forward deck	16
Forward tramps	16
Stern arch	17
engine room (1 of 2)	17
sail plan	17
Vessel under sail	17
CONTACTS	18
Contact details	18
Telephones	18

Office hours	18
Address	18

SPECIFICATIONS

Basic Information

Category: Catamaran

Sub Category: Cruising Sailboat

Model Year: 2005

Year Built: 2005

Country: United States

Dimensions

LOA: 46' 0" (14.02m)

Beam: 24' 8" (7.52m)

Max Draft: 3' 0" (0.91m)

Clearance: 63' 0" (19.20m)

Speed, Capacities and Weight

Displacement: 18000 Pounds

Water Capacity: 220 Gallons

Holding Tank: 55 Gallons

Fuel Capacity: 120 Gallons

Hull and Deck Information

Hull Material: Composite

Engine Information

Engines: 2

Manufacturer: Yanmar

Model: 3GM30

Fuel Type: Diesel

DETAILED INFORMATION

Dimensions

LOA: 46' (14.0 m) Beam: 24' 8" (7.5 m) Max Draft: 3' (.92 m) Max Bridge Clearance: 63' (19.2 m)
Displacement: 18,000 lbs (8,164 kilo)

Engines

Yanmar 3GM30 - Diesel engines

Total Power: 30 hp each

Port - 2145 hours

Starbd - 2750 hours

Cruising Speed: 8-9 kts

Tanks

Fuel: 120 gal (454.25 ltr) Fresh Water: 220 gal (832.8 ltr) Holding: 55 gal (208 ltr)

Accommodations

Vessel has (3) private cabins - Port hull, Owner's cabin sleeps (2) - Strbd hull, Aft guest cabin sleeps (2) - Forward guest cabin sleeps (3) - Dinette converts to sleep (2) Each of the (3)Cabins contain a true QUEEN berth. In the identical aft cabins, the berth extends under the aft deck to either side of the cockpit, and in the forward cabin on Strbd side, the berth extends under the raised section of the bridge deck forward of the cabin house. (there is an equipment room in the forward section of the Port hull under the bridge deck)

Master Cabin - Port side

Owner's suite occupies the Port hull. Queen sized berth is in the aft section and a full wall of storage closets is in the center. Forward is the large head with shower and full sized bath tub. A panel opens forward of the head for access to the forward section of the hull. There is also access to the equipment room between the hulls.

- Queen sized berth
- Settee

- Aft storage shelves
- Hanging locker
- Opening Ports and deck hatches
- Huge storage closets and hanging locker
- Pantry storage
- Huge head forward contains head w/Raritan electric flush & macerator - sink - full sized bath tub - lots of floor space

Two Guest Cabins Strbd Side

Aft Guest Cabin contains queen sized berth, settee vanity and storage closet, Opening Ports and deck hatches allow for light and ventilation. Forward Guest cabin contains a queen sized berth over the bridge deck and a single berth forward - This cabin sleeps (3). There is also access to the forward hull for additional storage or equipment. Cabin contains vanity and hanging closet - There are opening ports and deck hatches for light and ventilation A large head with electric flush toilet & macerator - sink and shower is shared between the (2) guest cabins

Vessel Walk Through

Vessel is easily boarded from either stern sugar scoop platform, or full aft platform spanning the two hulls. Cockpit is spacious with helm seat to Port and Water-proof Door, in the center of the bulkhead, leading to the Salon. Upon entering the Salon - The Dinette is forward under the forward windows, and the Galley is split along the aft side of the Salon, part to each side of the doorway. There is a double SS sink on the Port side with plenty of counter space to either side of the sink. Large storage cabinets and drawer storage is below the counter, and there are additional custom cabinets at eye level with glass fronts. An opening window looks out to the cockpit. To the Strbd side of the entry door is a second custom cabinet with the stove in the center - generous counter top space to either side of the stove - drawer storage below the counter top and Custom cabinets at eye level with glass fronts - An opening port to the cockpit allows for cross ventilation and additional light. Completing the Salon are the Two built in refrigerators forward and the huge Nav Station forward on the Port side. The Nav Station is also bathed in light from the forward and side windows. There are Two opening windows forward for ventilation A stairway from the Salon leads into the Port hull to the master suite. The sleeping cabin with queen sized berth & settee is Aft - of the stair - Amidships is a large storage area with lockers and pantry - Forward is the master's head with sink & bath tub Entering the Strbd hull from the Salon there is a Library of bookshelves facing the stairs. Aft is one guest cabin with a queen berth, settee and storage vanity, and hanging locker. Moving forward you will pass through the over sized head w/shower that serves both guest cabins, and forward of the head is the second larger guest cabin with a queen berth and a single berth in the forward part of the cabin. There is access to the forward section of Strbd Hull over the single berth, and access to the forward section of the Port hull over the bath tub - these sections can be used for additional storage or equipment.

Galley

The Galley extends to either side of the door leading to the Salon. It is Well Lit by large forward and side windows and has a very "homey" feel with large counter tops, Custom cabinets below the counter tops, and custom upper cabinets with glass fronts, and all necessary appliances. Refrigeration is either 12 volt, or 110v dockside current.

- (2) Norcold refrigerators (1) freezer
- Sharp Carousel microwave
- Double SS sinks
- Amana 3 burner propane stove w/oven & broiler (this vessel carries a total of 4 propane tanks)

Dining

The Salon features a large dinette forward with seating for 6-8. The Dinette can be converted to an additional double berth for extra sleeping accommodations

Electronics & Entertainment

The vessel is completely equipped with a full electronics package, and the means to generate it's own electrical power underway

HELM:

- Autopilot - Raymarine 6002 smart pilot - driven off the back end of the main steering wheel (inside the cabin bulkhead) - Control head at the helm
- Furuno Nav-Net 3D Cart plotter/Radar w/ AIS broadcast & Receiver at Helm (New 2012)
- (2) Navman depth instruments at helm (one for each hull)
- Ritchie Compass
- Furuno 1730 Radar w/ 4KW 24" dome (New 2012)Nav Station:(2) Navman 2100 depth meter (one for each hull
- VHF Ram Mic

Nav Station:

- Icom STB M802 Ham/SSB radio w/SGC auto coupler antennae
- (1) Garmin GPSMAP 440 chart plotters (at the inside Nav Station)
- Standard Horizon Matrix VHF radio w/AIS model GX 2100
- Raymarine ST 60 wind speed and direction w/repeater
- 406 MHZ GPS EPIRB - "Global Fix Pro"
- Wireless security system
- Skymate satellite e-mail
- Samsung 26" flat screen HDTV in Salon

- Flat Screen TV in Master cabin
- Soney DVD Playe
- Portable dish satellite antennae
- Digital weather center - Barometer, Humidity, Temp
- Dual MXDM70 Marine stereo - AM/FM CD w/MP3 input - Bose speakers in cabin - weatherproof speakers in cockpit

Electrical

Two solar panels, mounted on aft arch, put out 130 Watts each - provide most of the electrical requirements of the vessel.

- (2) 130 Watt Solar panels
- (2) 100 Amp alternators
- 2000 Watt Prosine inverter/charger
- Batteries: (1) engine starting battery type 31, (11) type 31 House batteries - 100 AH each - total 1200 AH (all NEW 2013)

Mechanical

- (2) Yanmar 3GM30 engines w/sail drives
- 100 Amp Alternators
- (1)Flagshio Marine Air central air conditioning unit -NEW 2012
- Heat Wave 8 Propane catalytic heater
- Spectra water maker 14 GPH
- Maxwell 2200 anchor windlass w/ chain gypsy & capstan - controls led aft to helm station
- (2) Water heater - engine heated or 110v dockside - 20 gal each

Hull & Deck

Hulls are West System Epoxy built and fiberglass over strip planked Western Red Cedar - This system is extremely Strong and durable. Decks and bulkheads are fiberglass - and are cored with closed cell foam. Dagerboards are solid Douglas fir. The hulls, decks and interior have been faired and painted with Awlgrip to a bright, shiny finish. The Dagerboards can be raised to allow for a 3'(.9 meter) draft to allow for entering shallow water. Fully extended, the Dagerboards increase the draft to 7' 6" (2.3 meters) to allow for excellent pointing ability and exceptional sailing. The Dagerboards are nearly neutral buoyancy and are very easily deployed or raised.

- Large aft cockpit with circular seating and Helm seat
- NEW Double Helm seat
- NEW Double Companion seat Starboard side of Cockpit
- Sugar scoop transom on each hull

- Full Bimini top over cockpit and Helm
- Sun covers over Salon windows
- New Trampolines 2012
- West Marine propane Bar B Que - Stern Rail mounted
- Open Sun Decks on either side of cockpit
- Aft bridge deck between hulls
- Wide walk-around side decks - no obstructions - Shrouds are inboard
- SS tubular railing and stantions for security around the deck
- SS bow pulpits
- 16" SS bow and stern cleats with substantial backing plates
- Wash-down faucet forward
- Custom SS stern arch w/ built in dingy hoist and solar panels
- SS handrails along cabin top
- Ground Tackle:
- (2) anchors are carried forward - A Danforth Anchor with all chain, and Fortress Anchor with chain and rode
- (1) Fisherman's anchor
- Tender:
- Vessel includes an Achilles 11' RIB with 20 HP Yamaha four stroke engine
- Accessories:
- Includes a Dive Hookah with 100' hose
- Life sling
- Cruising guides and charts for the Caribbean

Sails and Rigging

The vessel carries a large fully battened Main Sail with full roach. She also has a fractionally rigged 100% head sail. This combination easily drives the boat to double digit speeds. She also carries an Asymmetrical Spinnaker for light air or downwind use.

- Selden mast w/lazy-jack mainsail system
- Furlex head sail furling system
- Banks Main sail - NEW 2013
- Banks Jlb Sail - NEW 2013
- New Sail covers - 2013
- Asymmetrical Spinaker in Cruising Chure - lightly used
- SS rigging w/Stay-lock fittings
- Harken blocks - Harken main sheet traveler - Spinlock line clutches
- (6) Harken 46 Self Tailing 2 speed winches
- Capstan on anchor windlass can be used as an electric winch and makes raising the large main sail an easy task

Designer's Comments

Timeliner - 46 14 m[46'] performance ocean cruising cat The "Timeliner - 46" is a serious cruising boat with offshore capabilities. For its "size" and displacement it is a little longer than the usual cruising boat. However this extra length does endow it with a good load carrying capability and the ability to carry that "little bit extra" so beloved by cruising people, without destroying its performance. It has a generous sail area and in its light load mode will give a good account of itself on the racing circuit being a match for all but the most extreme racers. It is basically rigged as a sloop but can quite easily be converted to a cutter or stay as a sloop with masthead extras set off a forebeam "prod". Asymmetrical spinnakers and reachers are standard.

Exclusions

Owner's personal belongings.

Disclaimer

The Company offers the details of this vessel or yacht in good faith but cannot guarantee or warrant the accuracy of this information nor warrant the condition of the vessel. A buyer should instruct his representatives, agents, or his surveyors, to investigate such details as the buyer desires validated. This vessel or yacht is offered subject to prior sale, price change, or withdrawal without notice.

PHOTOS

Aft View



Salon - Galley-1



Salon - Dinette



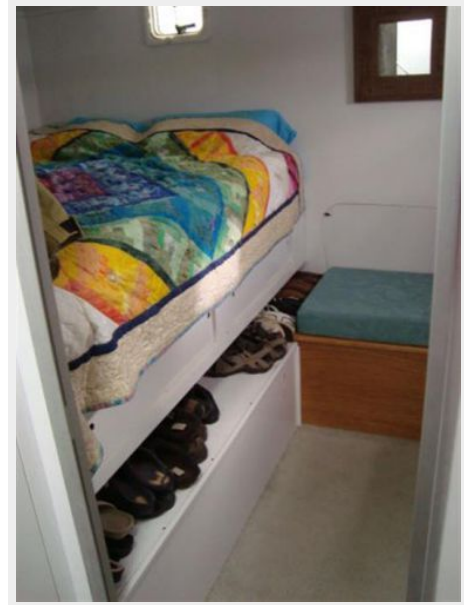
Salon - Galley-2



Salon - Nav Station - Refrigerators



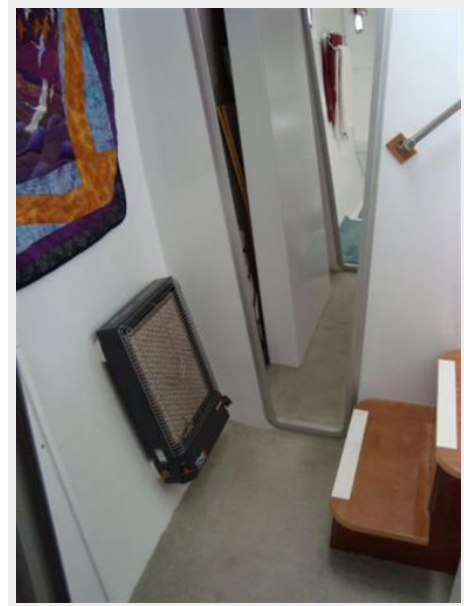
Owner's cabin-1



Owner's cabin-2



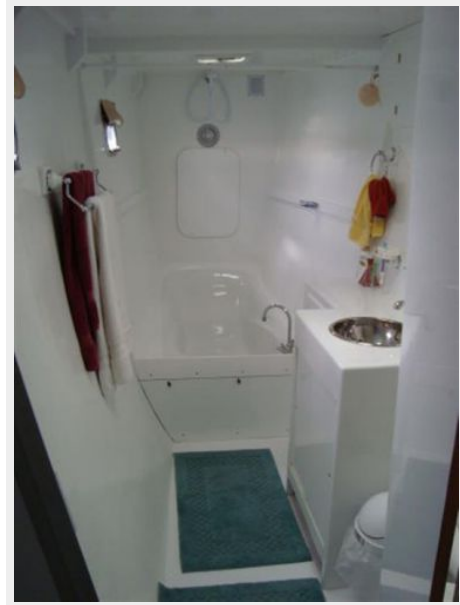
Owner's Suite entrance



Owner's suite - storage



Owner's head w/bath tub



Entrance to Guest cabins - Library



Aft Guest cabin-1



Aft Guest cabin-2



Forward Guest cabin



Forward guest cabin-2



Guest head



Cockpit



Helm-1



Helm-2



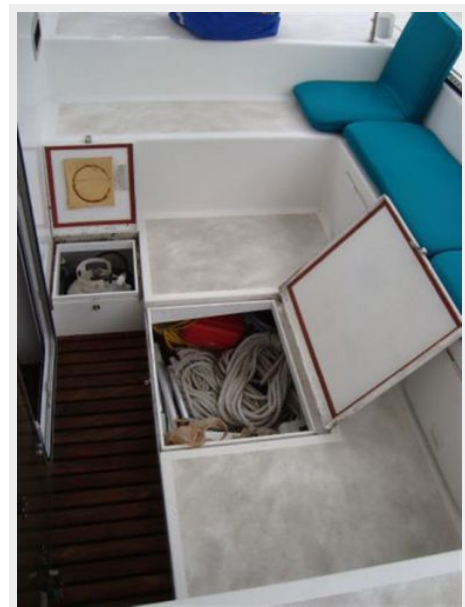
Cabin top - winches



Side deck - cabin top



Storage - cockpit



Forward deck



Forward tramps



CONTACTS

Andrey Shestakov, leading yacht broker of the sales department of Shestakov Yacht Sales Inc. Shestakov Yacht Sales Inc., the official representative of the Miami/Fort Lauderdale FL headquarters.

Contact details

Email: andrey@shestakovyachtsales.com

Web: shestakovyachtsales.com/en/

Telephones

USA: +1(954)274-4435

Office hours

Monday – Saturday: **9:00 - 21:00** EDT

Sunday: **closed**

Address



Harbour Towne Marina, 850 NE 3rd St,
STE 213, Dania, FL 33004